



Chipsmall Limited consists of a professional team with an average of over 10 year of expertise in the distribution of electronic components. Based in Hongkong, we have already established firm and mutual-benefit business relationships with customers from,Europe,America and south Asia,supplying obsolete and hard-to-find components to meet their specific needs.

With the principle of “Quality Parts,Customers Priority,Honest Operation,and Considerate Service”,our business mainly focus on the distribution of electronic components. Line cards we deal with include Microchip,ALPS,ROHM,Xilinx,Pulse,ON,Everlight and Freescale. Main products comprise IC,Modules,Potentiometer,IC Socket,Relay,Connector.Our parts cover such applications as commercial,industrial, and automotives areas.

We are looking forward to setting up business relationship with you and hope to provide you with the best service and solution. Let us make a better world for our industry!



## Contact us

Tel: +86-755-8981 8866 Fax: +86-755-8427 6832

Email & Skype: info@chipsmall.com Web: www.chipsmall.com

Address: A1208, Overseas Decoration Building, #122 Zhenhua RD., Futian, Shenzhen, China



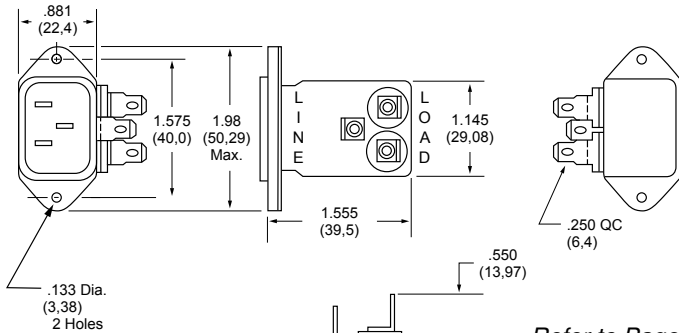
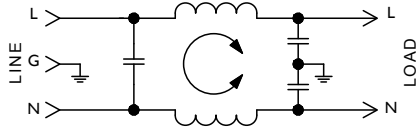
# F2199/F2200 RFI Filters



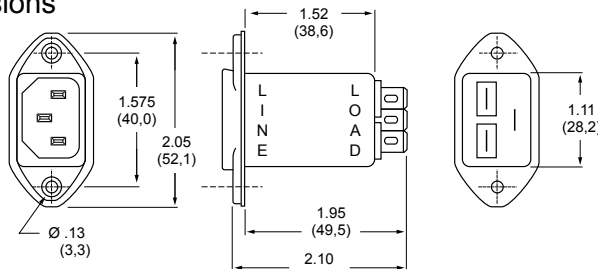
## Features:

- General Purpose Filters — Designed for Common Mode Emissions or Susceptibility Applications
- Integral IEC Connector in Space-Efficient Package
- Ideal for Linear Power Supplies in Digital Equipment

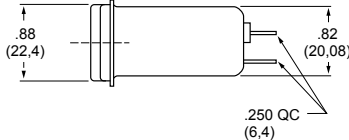
## F2199/F2200 Simplified Schematic



## F2200CA (1, 3 and 6Amp) Dimensions



## F2199CA (1, 3 and 6Amp) Dimensions



## Specifications:

**Rated Voltage:** 250VAC Maximum - 50/60 Hz

<b>Rated Current:</b>	115VAC	250VAC
	1A	1A
	3A	3A
	6A	6A
	10A	8A

**Current Overload:** 6X for 8 seconds

**Hi-Pot Test (1 min):**

Line to Ground	1500VAC
Line to Line	1768VDC

**Insulation Resistance:**  $9 \times 10^9 \Omega$  at 100VDC

**Ambient Temperature:** 40°C Max. at rated current

**Humidity Range:** 0% to 95% R.H.

**Termination:**

- A: QC – Quick Connect
- C: IEC Receptacle

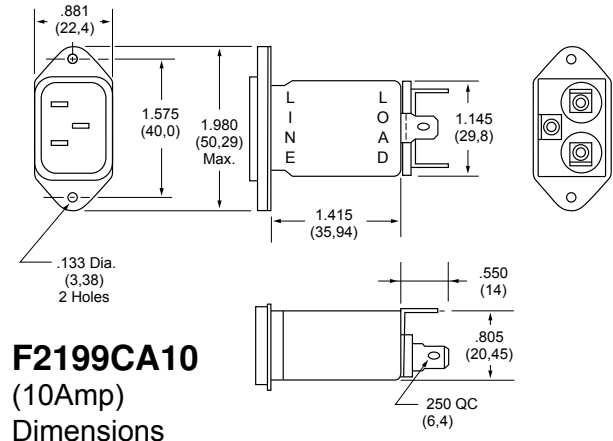
**Maximum Leakage Current:**

Each Line to Ground	<b>F2100/F2200</b>
115VAC, 60Hz:	0.25mA
250VAC, 50Hz:	0.40mA

**Agency Approvals:**



Refer to Page 58  
for Standard  
Mounting Cutouts



## F2199CA10 (10Amp) Dimensions

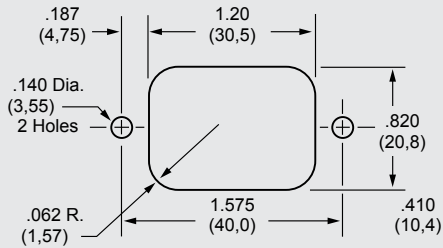
Nominal Current Rating	Part Number	Termination Line/Load	MINIMUM INSERTION LOSS - dB (50 ohm Circuit)						
			MODE	Frequency - MHz					
				.15	.50	1.0	5.0	10	30
1A	F2199CA01	IEC/QC	Common	22	35	40	46	50	50
	F2200CA01	IEC/QC	Differential	—	2	3	35	40	40
3A	F2199CA03	IEC/QC	Common	15	25	30	45	50	50
	F2200CA03	IEC/QC	Differential	—	2	3	35	40	40
6A	F2199CA06	IEC/QC	Common	10	20	29	43	45	50
	F2200CA06	IEC/QC	Differential	—	2	7	28	46	57
10A	F2199CA10	IEC/QC	Common	9	17	23	39	45	45
			Differential	—	2	7	12	37	60

NOTE: Other combinations of terminals may be specified on special order.

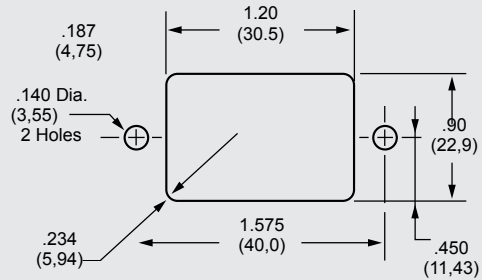


# Standard Mounting Cutouts

## F2199CA, F2200CA, F2300CA, F2400CA, F2500CA, F2700CA, F3100CA, F3200CA, F3400CA, F3500CA

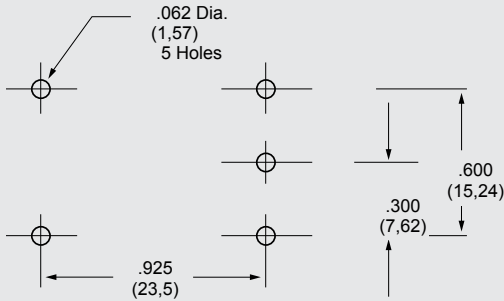


Back Mounting

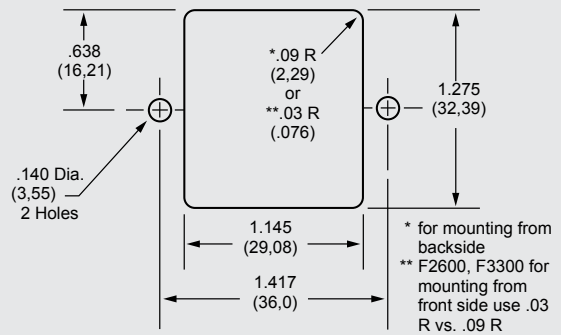


Front Mounting

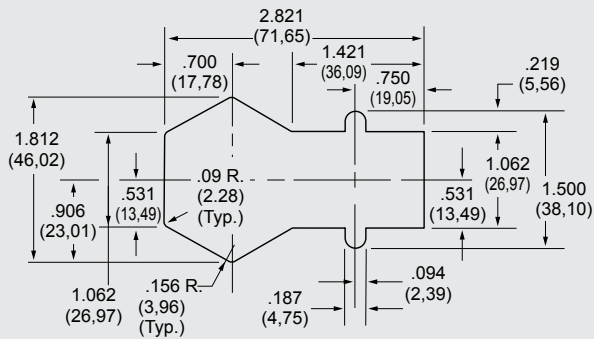
## F2600FP, F3300FP



## F2600, F3300



## F2700FB



## PE1 Screw Mount Series

