



Chipsmall Limited consists of a professional team with an average of over 10 year of expertise in the distribution of electronic components. Based in Hongkong, we have already established firm and mutual-benefit business relationships with customers from,Europe,America and south Asia,supplying obsolete and hard-to-find components to meet their specific needs.

With the principle of “Quality Parts,Customers Priority,Honest Operation,and Considerate Service”,our business mainly focus on the distribution of electronic components. Line cards we deal with include Microchip,ALPS,ROHM,Xilinx,Pulse,ON,Everlight and Freescale. Main products comprise IC,Modules,Potentiometer,IC Socket,Relay,Connector.Our parts cover such applications as commercial,industrial, and automotives areas.

We are looking forward to setting up business relationship with you and hope to provide you with the best service and solution. Let us make a better world for our industry!



## Contact us

Tel: +86-755-8981 8866 Fax: +86-755-8427 6832

Email & Skype: info@chipsmall.com Web: www.chipsmall.com

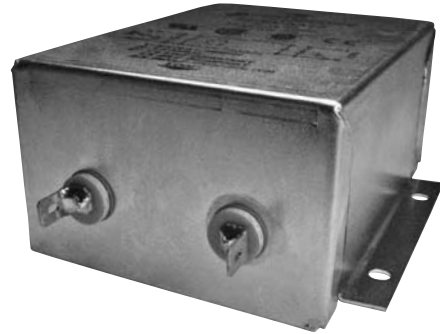
Address: A1208, Overseas Decoration Building, #122 Zhenhua RD., Futian, Shenzhen, China



# F2800 RFI Filters

High Performance

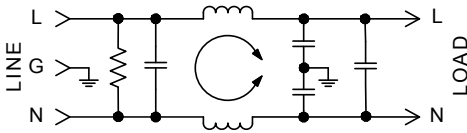
SINGLE PHASE FILTERS



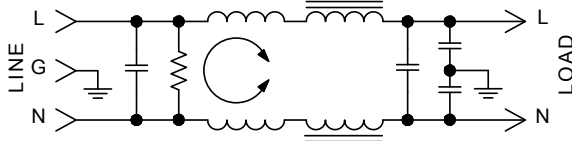
## Features:

- Designed for VDE "A" and FCC "B" Switching Power Supply Applications
- Low-Leakage Current
- Compact Case Sizes in Current Ratings up to 15A
- Effective Reduction of Common Mode and Differential Mode Noise from 100KHz to 30MHz

## F2800 Simplified Schematic 3 & 6Amp



## F2800 Simplified Schematic 10 & 15Amp



## Specifications:

**Rated Voltage:** 250VAC Maximum - 50/60 Hz

<b>Rated Current:</b>	115VAC	250VAC
	3A	1.5A
	6A	4A
	10A	6A
	15A	12A

**Current Overload:** 6X for 8 seconds

### Hi-Pot Test (1 min):

Line to Ground	1500VAC
Line to Line	1768VDC

**Insulation Resistance:**  $9 \times 10^9 \Omega$  at 100VDC

**Ambient Temperature:** 40°C Max. at rated current

**Humidity Range:** 0% to 95% R.H.

### Termination:

A: QC – Quick Connect  
B: Wire

### Maximum Leakage Current:

Each Line to Ground	<b>F2800</b>
115VAC, 60Hz:	0.25mA
250VAC, 50Hz:	0.40mA

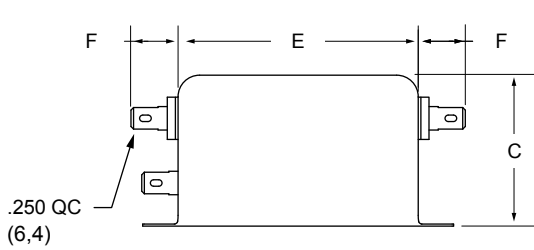
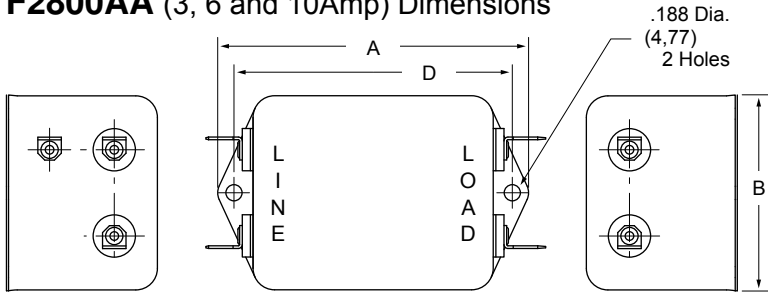
### Agency Approvals:



Nominal Current Rating	Part Number	Termination Line/Load	MINIMUM INSERTION LOSS - dB (50 ohm Circuit)										
			MODE	Frequency - MHz									
				.01	.05	.15	.50	1.0	5.0	10	30		
3A	F2800AA03 F2800BB03	QC/QC Wire/Wire	Common	10	30	35	35	35	40	45	50		
			Differential	5	25	50	60	65	50	45	45		
6A	F2800AA06 F2800BB06	QC/QC Wire/Wire	Common	5	20	30	35	40	40	40	50		
			Differential	5	10	40	60	60	50	50	45		
10A	F2800AA10 F2800BB10	QC/QC Wire/Wire	Common	5	15	25	30	35	40	45	50		
			Differential	7	20	50	60	60	60	60	55		
15A	F2800AA15 F2800BB15	QC/QC Wire/Wire	Common	8	21	29	33	36	38	45	50		
			Differential	10	30	70	70	70	70	70	60		

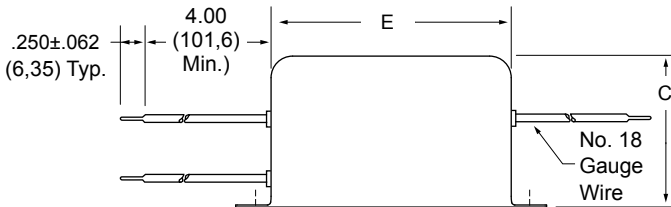
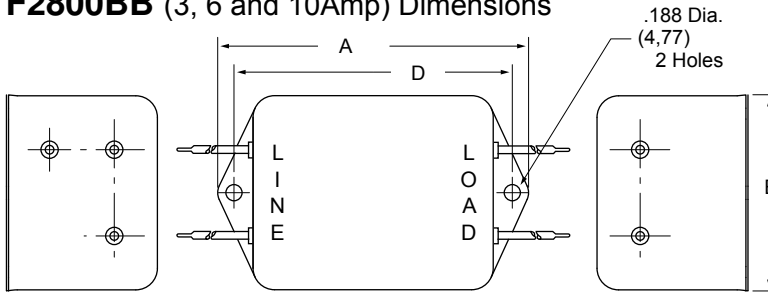


**F2800AA (3, 6 and 10Amp) Dimensions**



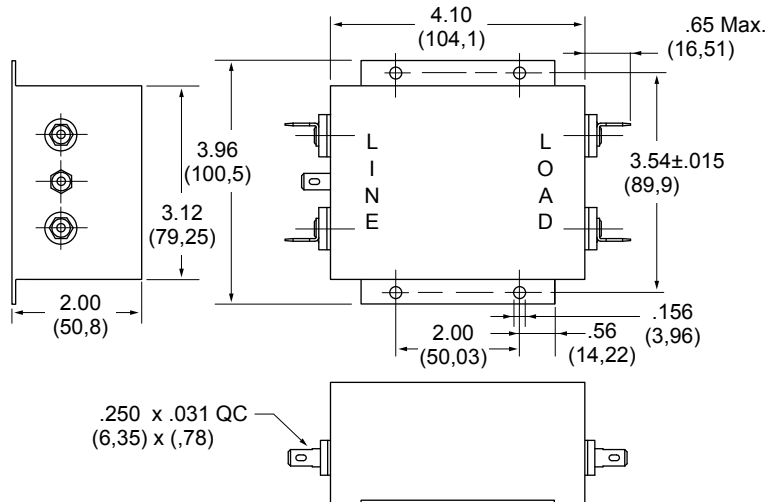
Amps	A	B	C	D	E	F
3A	3.310 (84,1)	2.000 (50,8)	1.500 (38,2)	2.940 (74,7)	2.500 (63,5)	.550 (14,0)
6A	3.310 (84,1)	2.000 (50,8)	1.500 (38,2)	2.940 (74,7)	2.500 (63,5)	.550 (14,0)
10A	4.44 (113)	2.250 (57,1)	1.750 (44,4)	4.063 (103,2)	3.630 (92,2)	.650 (16,5)

**F2800BB (3, 6 and 10Amp) Dimensions**



Amps	A	B	C	D	E
3A	3.310 (84,1)	2.000 (50,8)	1.500 (38,1)	2.940 (74,7)	2.500 (63,5)
6A	3.310 (84,1)	2.000 (50,8)	1.500 (38,1)	2.940 (74,7)	2.500 (63,5)
10A	4.690 (119)	2.250 (57,1)	1.750 (44,4)	4.063 (103,2)	3.630 (92,2)

**F2800AA  
F2800BB  
(15Amp)  
Dimensions**



Dimensions are in inches and millimeters unless otherwise specified. Values in parentheses are metric equivalents.

