



Chipsmall Limited consists of a professional team with an average of over 10 year of expertise in the distribution of electronic components. Based in Hongkong, we have already established firm and mutual-benefit business relationships with customers from,Europe,America and south Asia,supplying obsolete and hard-to-find components to meet their specific needs.

With the principle of “Quality Parts,Customers Priority,Honest Operation,and Considerate Service”,our business mainly focus on the distribution of electronic components. Line cards we deal with include Microchip,ALPS,ROHM,Xilinx,Pulse,ON,Everlight and Freescale. Main products comprise IC,Modules,Potentiometer,IC Socket,Relay,Connector.Our parts cover such applications as commercial,industrial, and automotives areas.

We are looking forward to setting up business relationship with you and hope to provide you with the best service and solution. Let us make a better world for our industry!



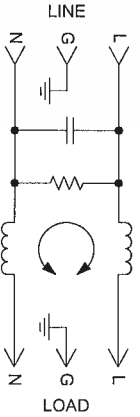
Contact us

Tel: +86-755-8981 8866 Fax: +86-755-8427 6832

Email & Skype: info@chipsmall.com Web: www.chipsmall.com

Address: A1208, Overseas Decoration Building, #122 Zhenhua RD., Futian, Shenzhen, China





MINIMUM INSERTION LOSS - 500 CIRCUIT			
COMMON MODE		DIFFERENTIAL MODE	
MHz	min. I. L. (dB)	MHz	min. I. L. (dB)
.02	--	.02	--
.05	3	.05	--
.10	7	.10	3
.15	11	.15	6
0.5	20	0.5	14
1.0	22	1.0	20
5.0	24	5.0	35
10	22	10	35
30	18	30	35

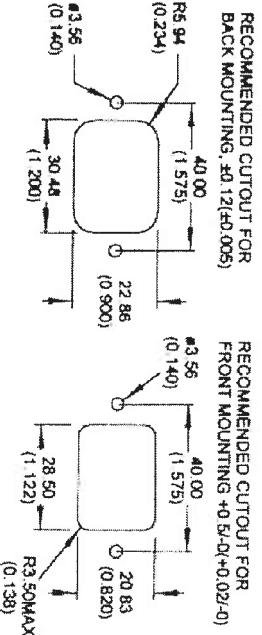
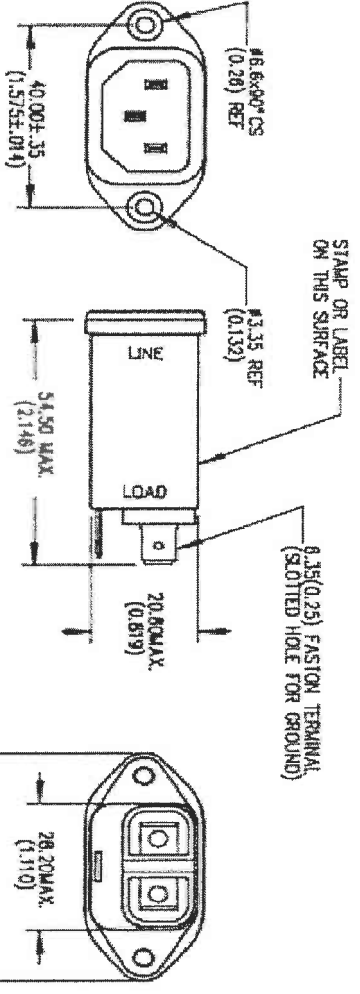
TEST SPECIFICATIONS

HI-POT (1 min.)
 U/G 1500 VAC
 L/L 1450 VDC

Rated Voltage: 250 VAC max.
 Rated Current: at 250 VAC 6A max.
 Line Frequency: 50/60 Hz
 Turn On Delay: 6A - 9000 seconds min.
 Inrush Current: at 120 VAC, 50Hz 2.5A max.
 Leakage Current: at 250 VAC, 50Hz 5 uA max.

ENVIRONMENTAL SPECIFICATIONS

Ambient Temperature Range: 0°C to 40°C
 (Operating at Rated Current)
 Humidity Range: 0% to 95% RH.
 Approvals: UL, CSA, TUV
 Component shall bear the CE Mark.
 RoHS Compliant



METRIC

UNLESS OTHERWISE SPECIFIED
 DIMENSIONS ARE IN mm.
 TOLERANCES ARE:
 TOL = 0° 30'
 X TOL = ±.25
 XX TOL = ±.13

CONFIDENTIAL-PROPRIETARY TO CURTIS INDUSTRIES		NOT TO BE SHARED WITH THIRD PARTY WITHOUT WRITTEN PERMISSION FROM CURTIS INDUSTRIES	
CAD FILENAME:	F3199CA06 Rev A B.sldprt	SCALE	NONE
FOR TOLERANCE AND CHANGED INFORMATION	SEE SHEET 1	SIZE	SHT 3
		DWG. NO.	F3199CA06
		REV.	A