



Chipsmall Limited consists of a professional team with an average of over 10 year of expertise in the distribution of electronic components. Based in Hongkong, we have already established firm and mutual-benefit business relationships with customers from,Europe,America and south Asia,supplying obsolete and hard-to-find components to meet their specific needs.

With the principle of "Quality Parts,Customers Priority,Honest Operation,and Considerate Service",our business mainly focus on the distribution of electronic components. Line cards we deal with include Microchip,ALPS,ROHM,Xilinx,Pulse,ON,Everlight and Freescale. Main products comprise IC,Modules,Potentiometer,IC Socket,Relay,Connector.Our parts cover such applications as commercial,industrial, and automotives areas.

We are looking forward to setting up business relationship with you and hope to provide you with the best service and solution. Let us make a better world for our industry!



## Contact us

Tel: +86-755-8981 8866 Fax: +86-755-8427 6832

Email & Skype: info@chipsmall.com Web: www.chipsmall.com

Address: A1208, Overseas Decoration Building, #122 Zhenhua RD., Futian, Shenzhen, China



# F3000/3100/3200/3400/3500 RFI Filters



## Specifications:

**Rated Voltage:** 250VAC Maximum - 50/60 Hz

**Rated Current:** 115VAC 250VAC  
3A 3A  
6A 6A

**Current Overload:** 6X for 8 seconds

**Hi-Pot Test (1 min):**

Line to Ground 1500VAC  
Line to Line 1768VDC

**Insulation Resistance:**  $9 \times 10^9 \Omega$  at 100VDC

**Ambient Temperature:** 40°C Max at rated current

**Humidity Range:** 0% to 95% R.H.

**Termination:**

A: QC – Quick Connect  
C: IEC Receptacle

**Maximum Leakage Current:**

Each Line to Ground **F3000 Series**  
115VAC, 60Hz: 2  $\mu$ A  
250VAC, 50Hz: 5  $\mu$ A

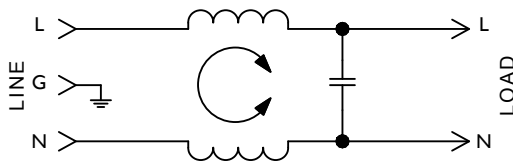
**Agency Approvals:**



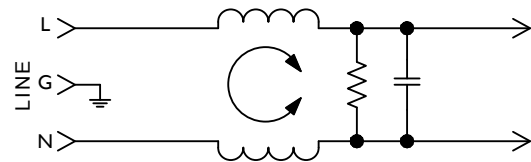
## Features:

- Designed to Meet UL544 Specification for Medical and Dental Equipment. Available to UL/IEC 60601 Standard
- F3400/F3500 Have Enhanced Differential Mode Performance
- Effective in Other Low-Leakage Current Applications

**F3000/F3100/F3200 Series  
Simplified Schematic**



**F3400/F3500 Series  
Simplified Schematic**



Nominal Current Rating	Part Number	Termination Line/Load	MINIMUM INSERTION LOSS - dB (50 ohm Circuit)						
			MODE	Frequency - MHz					
				.15	.50	1.0	5.0	10	30
3A	F3400CA03 F3500CA03	IEC/QC IEC/QC	Common	22	32	35	30	25	20
			Differential	8	18	24	35	35	35
6A	F3000AA06 F3100CA06 F3200CA06	QC/QC IEC/QC IEC/QC	Common	10	20	23	25	23	15
			Differential		2	8	32	34	23
			Common	15	21	24	24	22	26
	Differential	8	18	24	35	35	35		

NOTE: Other combinations of terminals may be specified on special order.

Dimensions are in inches and millimeters unless otherwise specified. Values in parentheses are metric equivalents.



**Curtis Industries**  
A Division of Powers Holdings, Inc.

1-800-657-0853

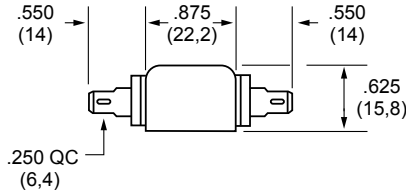
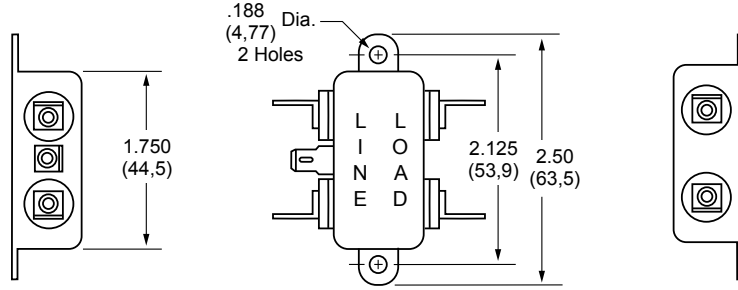
General Purpose Filtered Modules

MEDICAL FILTERS

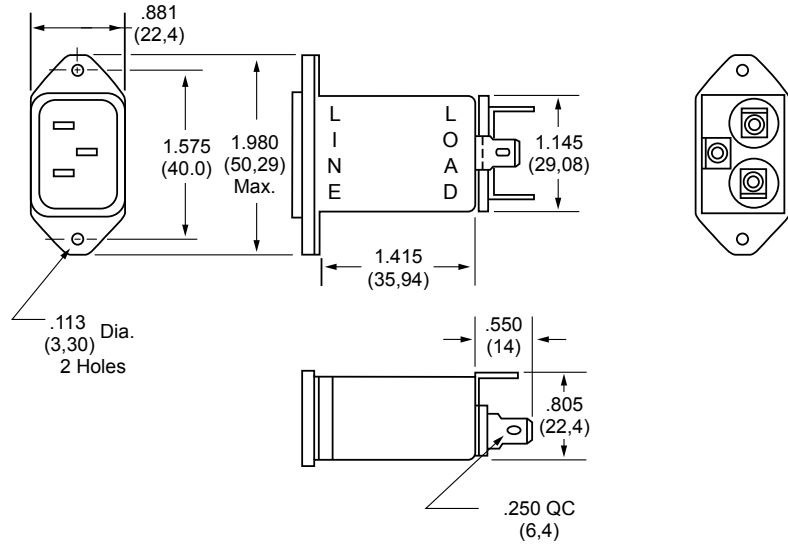
# F3000/3100/3200/3400/3500 RFI Filters (continued)

General Purpose Filtered Modules

**F3000AA**  
(6Amp)  
Dimensions



**F3100CA**  
(6Amp)  
**F3400CA**  
(3 and 6Amp)  
Dimensions



MEDICAL FILTERS

**F3200CA**  
(6Amp)  
**F3500CA**  
(3 and 6Amp)  
Dimensions

