



Chipsmall Limited consists of a professional team with an average of over 10 year of expertise in the distribution of electronic components. Based in Hongkong, we have already established firm and mutual-benefit business relationships with customers from,Europe,America and south Asia,supplying obsolete and hard-to-find components to meet their specific needs.

With the principle of “Quality Parts,Customers Priority,Honest Operation,and Considerate Service”,our business mainly focus on the distribution of electronic components. Line cards we deal with include Microchip,ALPS,ROHM,Xilinx,Pulse,ON,Everlight and Freescale. Main products comprise IC,Modules,Potentiometer,IC Socket,Relay,Connector.Our parts cover such applications as commercial,industrial, and automotives areas.

We are looking forward to setting up business relationship with you and hope to provide you with the best service and solution. Let us make a better world for our industry!



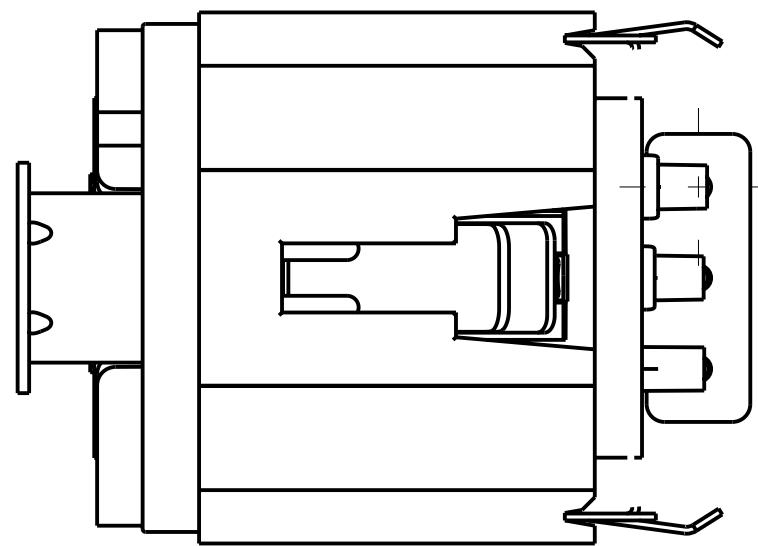
Contact us

Tel: +86-755-8981 8866 Fax: +86-755-8427 6832

Email & Skype: info@chipsmall.com Web: www.chipsmall.com

Address: A1208, Overseas Decoration Building, #122 Zhenhua RD., Futian, Shenzhen, China

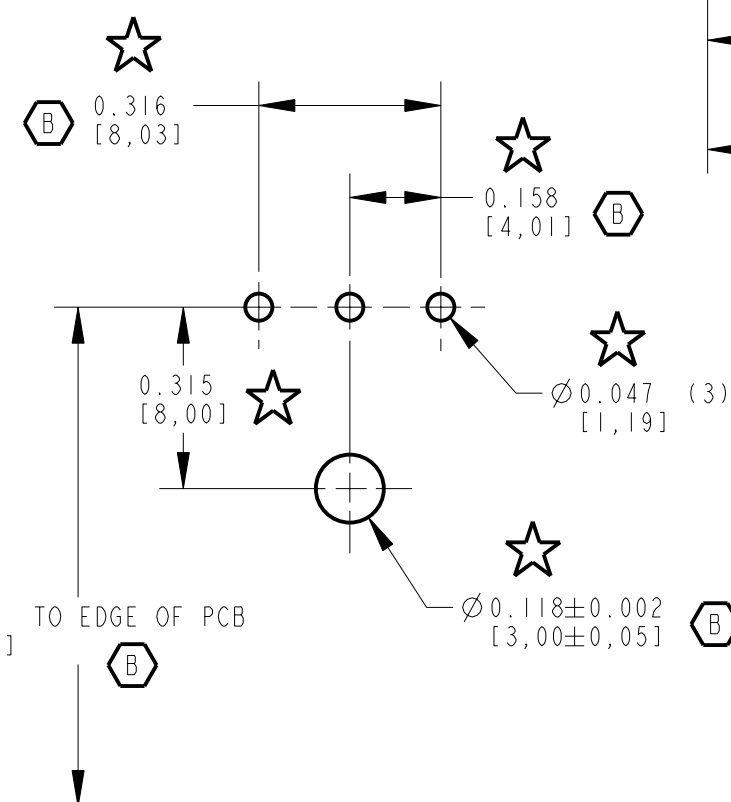
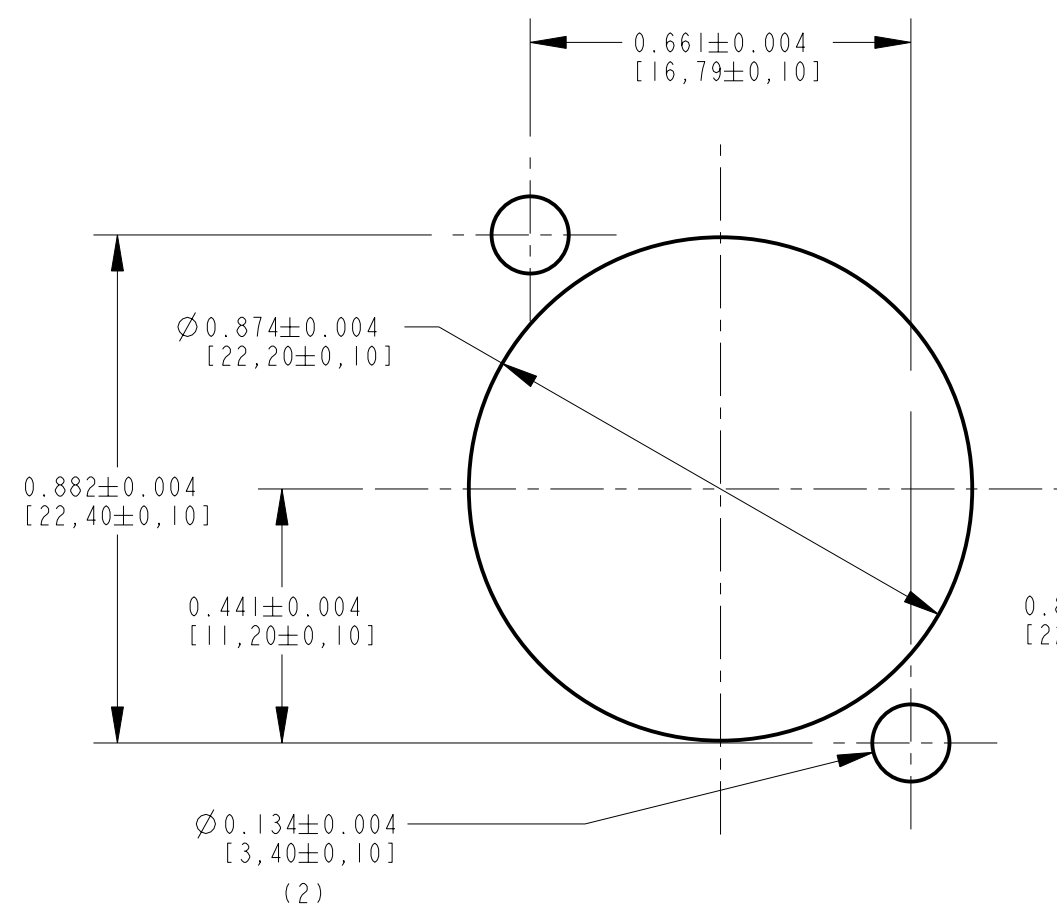
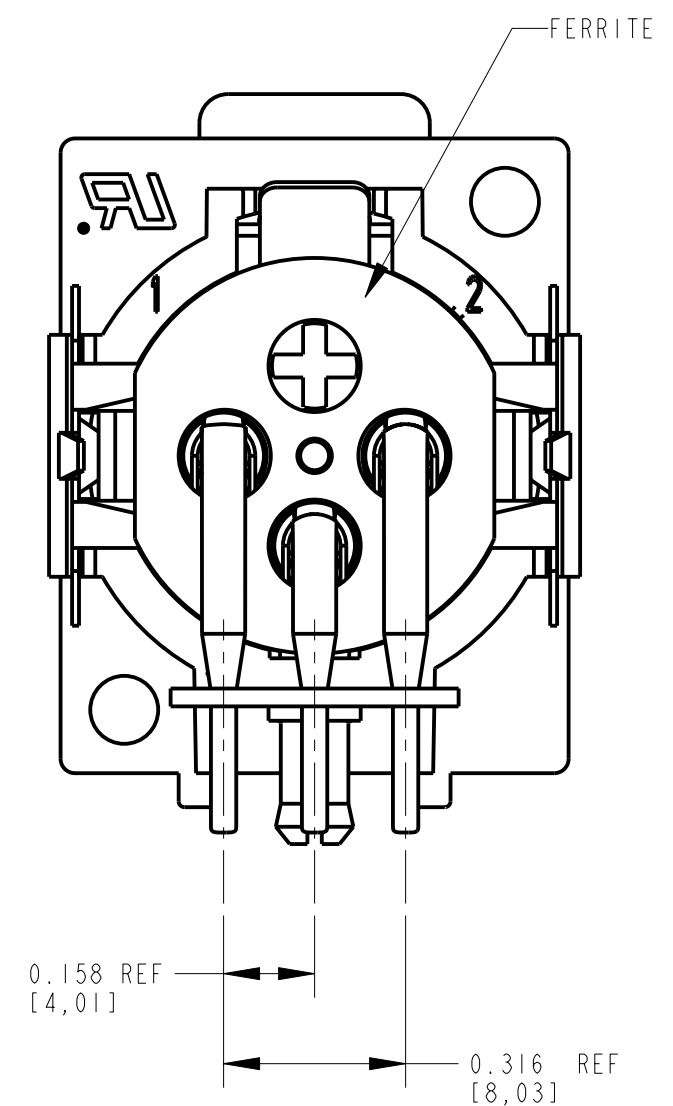
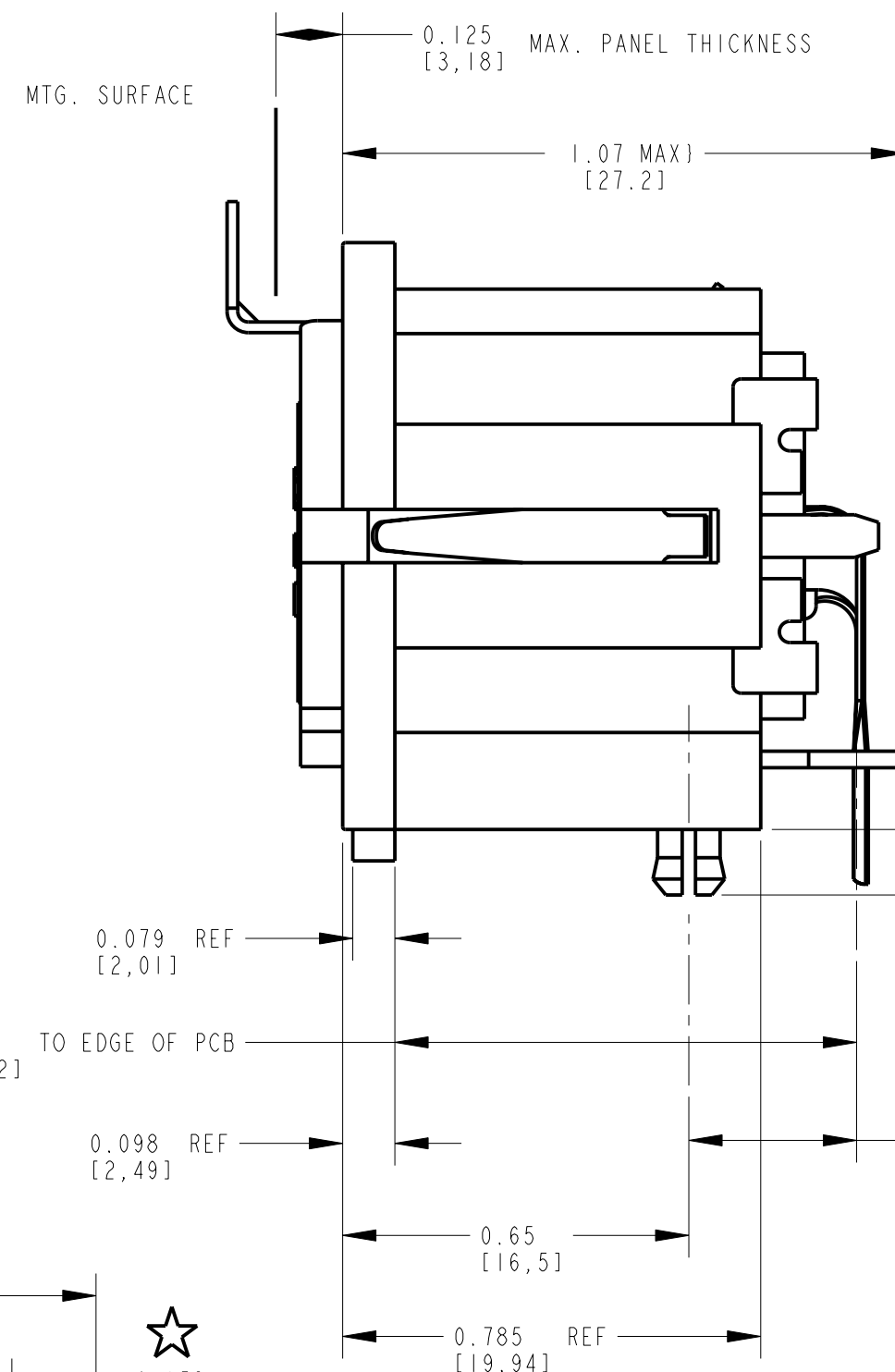
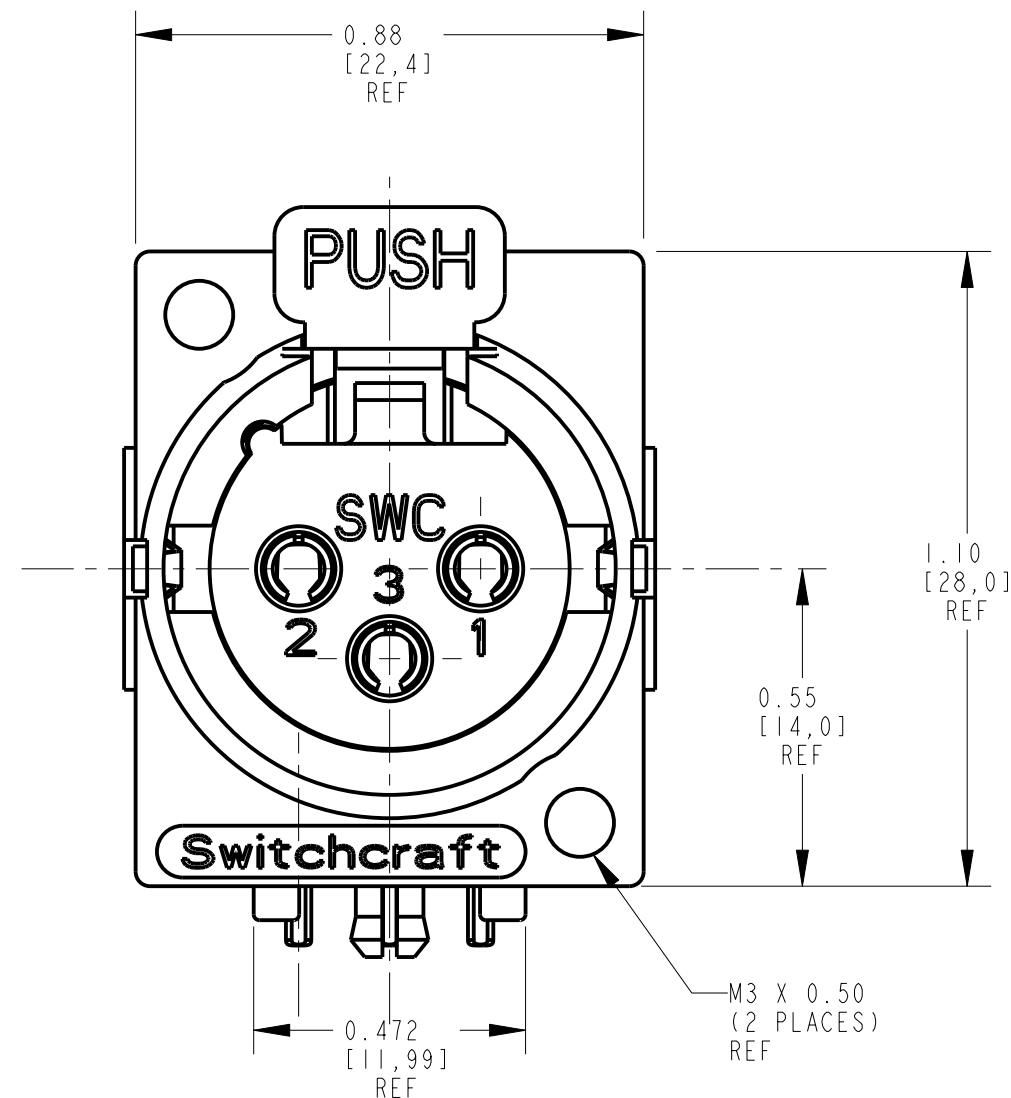




MATERIALS:

HOUSING - ZINC ALLOY, NICKEL PLATED
CONTACTS - COPPER ALLOY, SILVER PLATED
INSULATOR - THERMOPLASTIC, UL 94V-0 RATED
INSULATING SPACER - PHENOLIC
GROUND PIN - COPPER ALLOY, TIN PLATED
GROUND SPRING - HEAT TREATED STEEL OR COPPER ALLOY, TIN PLATED
RELEASE LEVER - C.R.S., NICKEL PLATED
LATCH SPRING - HEAT TREATED STEEL, NICKLE PLATED
FERRITE - NICKEL ZINC, K-100
RATED CURRENT - 3 AMP
SERVICE VOLTAGE - 133 VAC

RELEASE LEVER THROW 0.100 [2,5]



RECOMMENDED P.C. BOARD LAYOUT
(0.062 [1.57] THICK P.C. BOARD REF.)

RECOMMENDED MOUNTING
PANEL LAYOUT

						<div>★ STAR SYMBOL DENOTES CRITICAL DIMENSION</div> <div>UNLESS OTHERWISE SPECIFIED</div> <div>1. ALL DIMENSIONS IN INCHES - TWO PLACE DECIMALS ±0.01 - THREE PLACE DECIMALS ±0.005 - ANGLES ±1° - ALL DIA. CONCENTRIC WITHIN 0.005 T.I.R.</div> <div>2. FEATURES ON THE SAME CENTERLINE MUST BE ALIGNED WITHIN ±0.002</div> <div>3. REMOVE ALL BURRS</div> <div>DO NOT SCALE DRAWING</div>	<div>THIS DRAWING DESCRIBES A DESIGN CONSIDERED PROPRIETARY IN NATURE, DEVELOPED AND MANUFACTURED BY SWITCHCRAFT INC. AND IS RELEASED ON A CONFIDENTIAL BASIS FOR IDENTIFICATION PURPOSES ONLY.</div> <table><tr><td colspan="2">SIZE</td><td colspan="2">WIDTH</td><td colspan="2">MULT</td><td colspan="2">LBS/M</td><td colspan="2">TEMPER</td></tr><tr><td colspan="6">FINISH SPEC No.</td><td colspan="4">MATERIAL SPEC No.</td></tr><tr><td colspan="4">FIRST USED ON</td><td colspan="6">SCALE 3:1</td></tr><tr><td colspan="2">DATE DRAWN 21-Jan-02</td><td colspan="1">BY KJB</td><td colspan="2">CHKD TJK 1-21-02</td><td colspan="2">APVD KJB 1-21-02</td><td colspan="4" rowspan="2"><div>Switchcraft®</div><div>SHEET OF </div></td></tr><tr><td colspan="2">NAME</td><td colspan="4">FEMALE 3 PIN OG RA/PC W/FERRITE</td></tr><tr><td colspan="2">PART No.</td><td colspan="4">F3FRAF</td><td colspan="4">REV B</td></tr></table>										SIZE		WIDTH		MULT		LBS/M		TEMPER		FINISH SPEC No.						MATERIAL SPEC No.				FIRST USED ON				SCALE 3:1						DATE DRAWN 21-Jan-02		BY KJB	CHKD TJK 1-21-02		APVD KJB 1-21-02		<div>Switchcraft®</div> <div>SHEET OF </div>				NAME		FEMALE 3 PIN OG RA/PC W/FERRITE				PART No.		F3FRAF				REV B			
SIZE		WIDTH		MULT			LBS/M		TEMPER																																																																
FINISH SPEC No.							MATERIAL SPEC No.																																																																		
FIRST USED ON				SCALE 3:1																																																																					
DATE DRAWN 21-Jan-02		BY KJB	CHKD TJK 1-21-02		APVD KJB 1-21-02		<div>Switchcraft®</div> <div>SHEET OF </div>																																																																		
NAME		FEMALE 3 PIN OG RA/PC W/FERRITE																																																																							
PART No.		F3FRAF				REV B																																																																			
B	24518	7/14/3	KJB	KJB																																																																					
A	22650	1-21-02	TJK	KJB																																																																					
REV	ECO NUMBER	DATE	BY	APVD																																																																					
REVISIONS																																																																									