



Chipsmall Limited consists of a professional team with an average of over 10 year of expertise in the distribution of electronic components. Based in Hongkong, we have already established firm and mutual-benefit business relationships with customers from,Europe,America and south Asia,supplying obsolete and hard-to-find components to meet their specific needs.

With the principle of "Quality Parts,Customers Priority,Honest Operation,and Considerate Service",our business mainly focus on the distribution of electronic components. Line cards we deal with include Microchip,ALPS,ROHM,Xilinx,Pulse,ON,Everlight and Freescale. Main products comprise IC,Modules,Potentiometer,IC Socket,Relay,Connector.Our parts cover such applications as commercial,industrial, and automotives areas.

We are looking forward to setting up business relationship with you and hope to provide you with the best service and solution. Let us make a better world for our industry!



Contact us

Tel: +86-755-8981 8866 Fax: +86-755-8427 6832

Email & Skype: info@chipsmall.com Web: www.chipsmall.com

Address: A1208, Overseas Decoration Building, #122 Zhenhua RD., Futian, Shenzhen, China



APPLICATIONS

- INJECTION MOLDING MACHINES
- PRINTING PRESSES
- MEAT PACKING EQUIPMENT
- WEATHER INSTRUMENTS
- DRILL PRESSES
- WOODWORKING MACHINES
- CRANES
- FRONT-END LOADERS
- SCALES
- SEMI CONDUCTOR PROCESSING

SHORT LONGFELLOW SERIES • LINEAR POSITION TRANSDUCER

The Short Longfellow is frequently used for measuring linear position or displacement up to 6 inches on a wide variety of manufacturing and process equipment. The mechanical design of the unit's front and rear bearings, anodized extruded aluminum housing, stainless steel shaft and precious metal wipers are suitable for a factory's harsh environment.

Based on the proprietary MystR[®] conductive plastic film, it provides a high resolution, absolute position measurement without external signal conditioners.

Intrinsically Safe for Class I, II, and III Division 1, Groups A, B, C, D, E, F and G for Hazardous (indoor/outdoor) NEMA 4 locations.
 $V_{max} = 30\text{ V}$, $I_{max} = 100\text{ mA}$, $C_i = 0, \mu\text{F}$, $L_i = 0\text{ mH}$.



SHORT LONGFELLOW SERIES
LINEAR POSITION TRANSDUCER

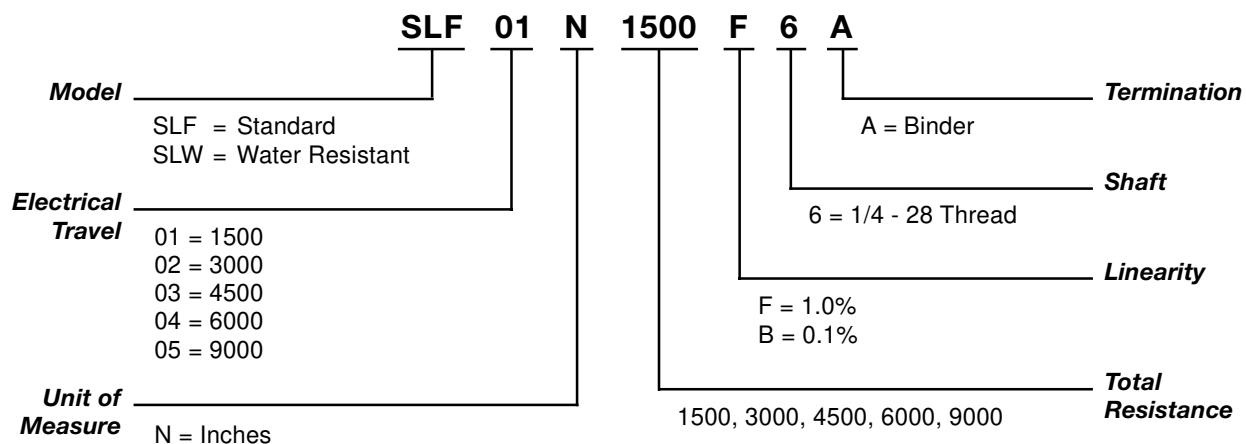
FEATURES

- Precious metal wipers
- 0.081 inch thick housing with 0.25 inch shaft
- Shaft seals
- MystR[®] plastic element
- Absolute continuous measurement
- High performance bearings
- High level DC output

BENEFIT

- Insures high performance, low noise
- Rugged construction for manufacturing environment
- Protects internal components from factory environment
- Tested up to 1 billion operations
- Accurate position at power up
- Long life even with side load conditions
- Works with simple controls

HOW TO ORDER



Note: Not all combinations are available. Minimum quantity orders apply. Contact the factory for more details.

Note: The *Total Resistance* is determined by *Electrical Travel*, at 1500 Ohms per inch.

TECHNICAL SPECIFICATIONS

MECHANICAL

| | |
|-------------------------|------------------------------|
| Total Mechanical Travel | See table below |
| Starting Force* | 1 lb |
| Total Weight | 0.26 to 0.49 lb |
| Vibration | 20 g / 0.75 mm (rms) 5-2 kHz |
| Shock | 50 g, 11 ms half sine |
| Backlash | 0.001 in. |
| Life | One Billion operations |

ELECTRICAL

| | |
|-------------------------------|--|
| Theoretical Electrical Travel | See table below |
| Independent Linearity** | ±1.0% or ±0.1% |
| Total Resistance | 1500 Ohms per inch theoretical electrical travel |
| Resistance Tolerance | ±20% |
| Operating Temperature | -65° to 105° C |
| Resolution | Infinite |
| Maximum Applied Voltage | 40 Vdc |
| Recommended Wiper Current | <1 µA |
| Electrical Connection | Binder Series 681 Connector or equivalent |

* Starting Force for SLW 5 lbs. (2.3 kg)

** 5-95% of Theoretical Electrical Travel

Caution: Do not test on an Ohm Meter on the Rx 1 scale or other current devices.

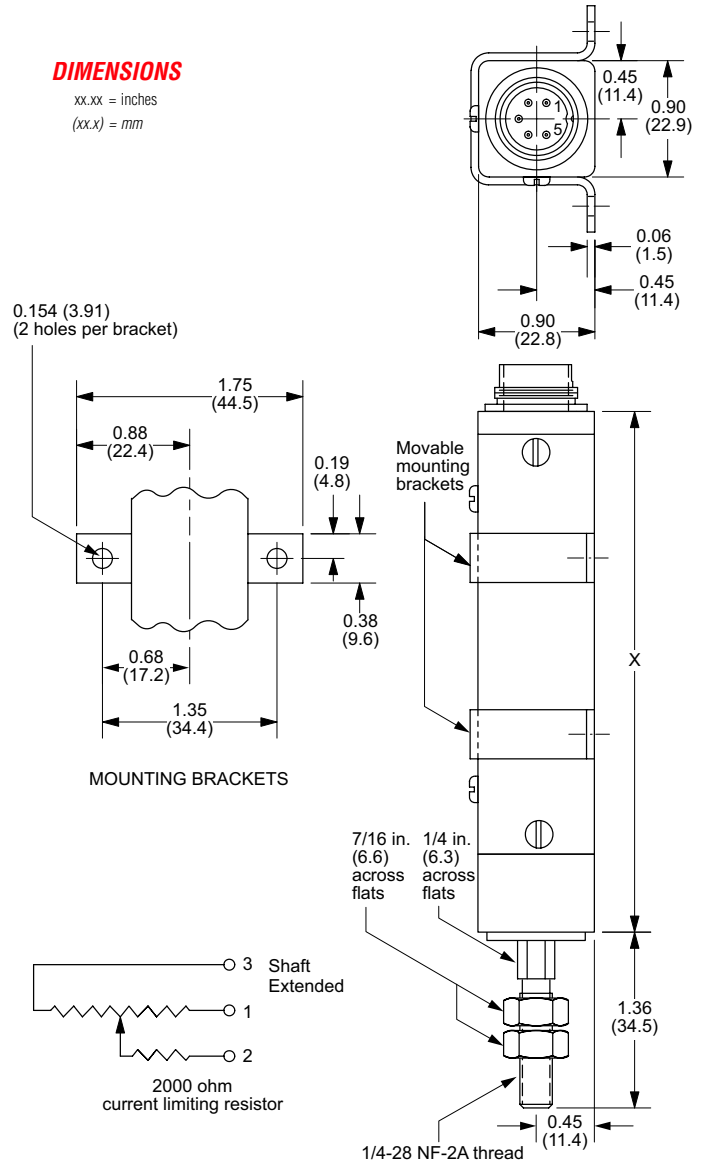
Caution: Excessive Wiper Current can cause Output errors or damage.

Caution: Zero shaft side load is recommended to achieve maximum life.

| Model | Electrical Travel in inches | Mechanical Travel in inches | Total Resistance in Ohms | Body Length 'X' in inches |
|----------------|-----------------------------|-----------------------------|--------------------------|---------------------------|
| SLF01 or SLW01 | 1.0 | 1.20 | 1500 | 4.05 |
| SLF02 or SLW02 | 2.0 | 2.20 | 3000 | 5.05 |
| SLF03 or SLW03 | 3.0 | 3.15 | 4500 | 5.95 |
| SLF04 or SLW04 | 4.0 | 4.15 | 6000 | 6.95 |
| SLF06 or SLW06 | 6.0 | 6.15 | 9000 | 8.95 |

DIMENSIONS

xx.xx = inches
(xx.x) = mm



SPECIALS AND ACCESSORIES

- Other Mechanical Travels
- Other Electrical Travels
- Other Resistance Values
- Rod and Bearings
- Ball Joint Assembly
- Other Linearity Values

WARRANTY/REMEDY

Honeywell warrants goods of its manufacture as being free of defective materials and faulty workmanship. Contact your local sales office for warranty information. If warranted goods are returned to Honeywell during the period of coverage, Honeywell will repair or replace without charge those items it finds defective. The foregoing is Buyer's sole remedy and is in lieu of all other warranties, expressed or implied, including those of merchantability and fitness for a particular purpose.

Specifications may change without notice. The information we supply is believed to be accurate and reliable as of this printing. However, we assume no responsibility for its use.

While we provide application assistance personally, through our literature and the Honeywell web site, it is up to the customer to determine the suitability of the product in the application.

Item # 1098800 M.G. 10/01

Honeywell

Sensing and Control
Honeywell
100 Discovery Way
Acton, MA 01720 USA



Tel: (877) 384-1300; Fax: (978) 263-0630

www.honeywell.com/sensing/products/di