



Chipsmall Limited consists of a professional team with an average of over 10 year of expertise in the distribution of electronic components. Based in Hongkong, we have already established firm and mutual-benefit business relationships with customers from,Europe,America and south Asia,supplying obsolete and hard-to-find components to meet their specific needs.

With the principle of “Quality Parts,Customers Priority,Honest Operation,and Considerate Service”,our business mainly focus on the distribution of electronic components. Line cards we deal with include Microchip,ALPS,ROHM,Xilinx,Pulse,ON,Everlight and Freescale. Main products comprise IC,Modules,Potentiometer,IC Socket,Relay,Connector.Our parts cover such applications as commercial,industrial, and automotives areas.

We are looking forward to setting up business relationship with you and hope to provide you with the best service and solution. Let us make a better world for our industry!



## Contact us

Tel: +86-755-8981 8866 Fax: +86-755-8427 6832

Email & Skype: info@chipsmall.com Web: www.chipsmall.com

Address: A1208, Overseas Decoration Building, #122 Zhenhua RD., Futian, Shenzhen, China



**Product number FA10307\_K2S-RS**

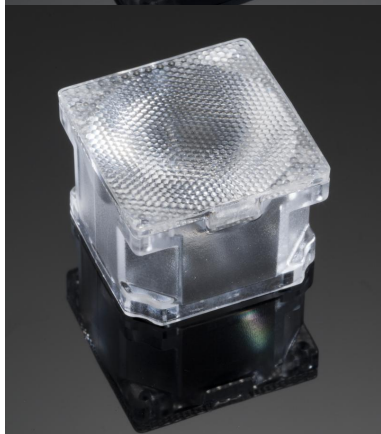
Family	Rose	FWHM	8 degrees
Type	Assembly	Efficiency	-
LED	LUXEON K2	cd/lm	19.000
Color	Clear	Gerber File	Available
Diameter	21.6 + 21.6 mm		
Height	15.6 mm		
Style	Square		
Optic Material	PC		
Holder Material	-		
Fastening	["tape"]		
Status	Production ready		

**Product number FA10329\_K2S-SS**

Family	Rose	FWHM	12 degrees
Type	Assembly	Efficiency	-
LED	LUXEON K2	cd/lm	-
Color	Clear	Gerber File	Available
Diameter	21.6 + 21.6 mm		
Height	15.6 mm		
Style	Square		
Optic Material	PC		
Holder Material	-		
Fastening	["tape"]		
Status	Production ready		

**Product number FA10308\_K2S-D**

Family	Rose	FWHM	28 degrees
Type	Assembly	Efficiency	-
LED	LUXEON K2	cd/lm	1.950
Color	Clear	Gerber File	Available
Diameter	21.6 + 21.6 mm		
Height	15.6 mm		
Style	Square		
Optic Material	PC		
Holder Material	-		
Fastening	["tape"]		
Status	Production ready		

**Product number FA10309\_K2S-M**

Family	Rose	FWHM	30 degrees
Type	Assembly	Efficiency	-
LED	LUXEON K2	cd/lm	1.440
Color	Clear	Gerber File	Available
Diameter	21.6 + 21.6 mm		
Height	15.6 mm		
Style	Square		
Optic Material	PC		
Holder Material	-		
Fastening	["tape"]		
Status	Production ready		



**Product number FA10323\_K2S-W**

Family	Rose	FWHM	40 degrees
Type	Assembly	Efficiency	-
LED	LUXEON K2	cd/lm	0.550
Color	Clear	Gerber File	Available
Diameter	21.6 + 21.6 mm		
Height	15.6 mm		
Style	Square		
Optic Material	PC		
Holder Material	-		
Fastening	["tape"]		
Status	Production ready		

**Product number FA10310\_K2S-O**

Family	Rose	FWHM	44+20 degrees
Type	Assembly	Efficiency	-
LED	LUXEON K2	cd/lm	1.370
Color	Clear	Gerber File	Available
Diameter	21.6 + 21.6 mm		
Height	15.6 mm		
Style	Square		
Optic Material	PC		
Holder Material	-		
Fastening	["tape"]		
Status	Production ready		

**NOTE: The typical divergence will be changed by different color, chip size and chip position tolerance. The typical total divergence is the full angle measured where the luminous intensity is half of the peak value.**



## PRODUCT DATASHEET

### Rose series

last update 8/12/2016

#### GENERAL INFORMATION

- Product series especially designed & optimized for LUXEON K2 series of LEDs.
- Special care taken to make light distribution as uniform as possible.
- Lens material optical grade PC with high UV and temperature resistance (120 degrees of Celcius / 248 degrees of Fahrenheit). Allows use of high current and temperature conditions.

Please find more information about used materials from below:

[http://ledil.fi/sites/default/files/Documents/Technical/Material/PC%20Makrolon%202400\\_2407\\_2456\\_2458-UL.pdf](http://ledil.fi/sites/default/files/Documents/Technical/Material/PC%20Makrolon%202400_2407_2456_2458-UL.pdf)