



Chipsmall Limited consists of a professional team with an average of over 10 year of expertise in the distribution of electronic components. Based in Hongkong, we have already established firm and mutual-benefit business relationships with customers from,Europe,America and south Asia,supplying obsolete and hard-to-find components to meet their specific needs.

With the principle of “Quality Parts,Customers Priority,Honest Operation,and Considerate Service”,our business mainly focus on the distribution of electronic components. Line cards we deal with include Microchip,ALPS,ROHM,Xilinx,Pulse,ON,Everlight and Freescale. Main products comprise IC,Modules,Potentiometer,IC Socket,Relay,Connector.Our parts cover such applications as commercial,industrial, and automotives areas.

We are looking forward to setting up business relationship with you and hope to provide you with the best service and solution. Let us make a better world for our industry!



Contact us

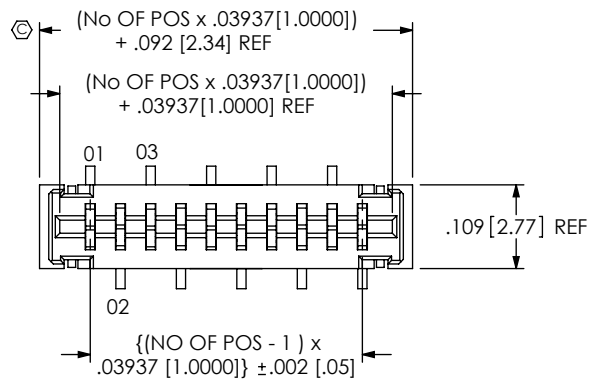
Tel: +86-755-8981 8866 Fax: +86-755-8427 6832

Email & Skype: info@chipsmall.com Web: www.chipsmall.com

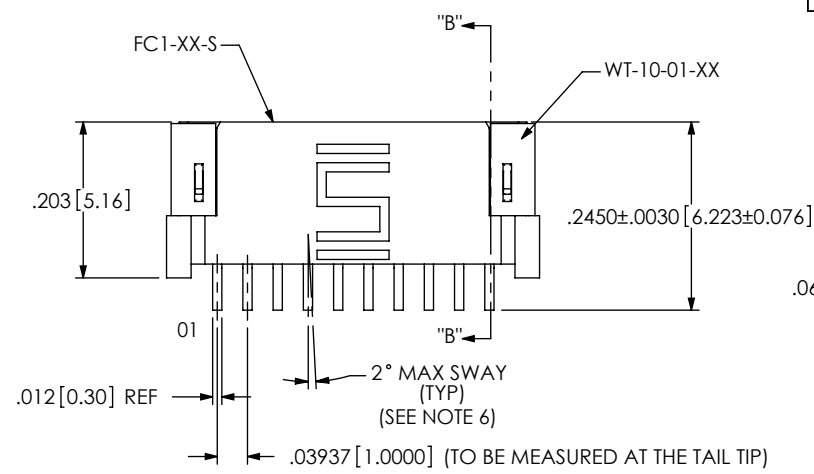
Address: A1208, Overseas Decoration Building, #122 Zhenhua RD., Futian, Shenzhen, China



DO NOT SCALE FROM THIS PRINT



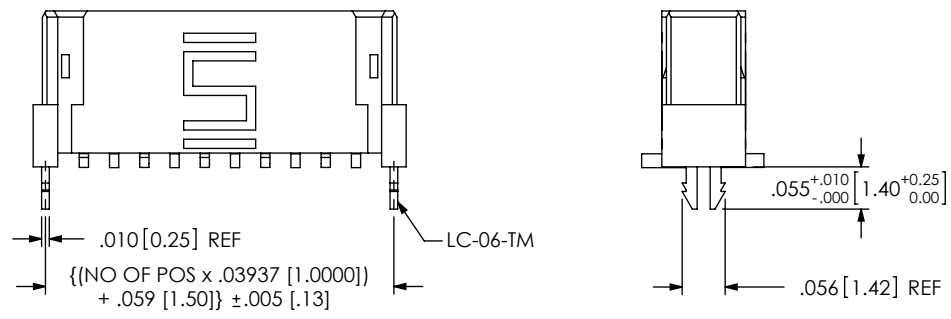
-01 / -L1 [VERTICAL LEAD STYLES]



-02 / -L2 [HORIZONTAL LEAD STYLES]

FIG 1

FIG 3
-LC OPTION
SAME AS FIG. 2 EXCEPT AS SHOWN



FC1-XX-XX-XX-XX

No OF POSITIONS
-05 THRU -25
(SEE NOTE 8)

LEAD STYLE

- 01 VERTICAL (SEE FIG 2, C-136-01-X)
- 02 HORIZONTAL (SEE FIG. 1) (C-136-02-X)
- L1 VERTICAL (LOW INSERTION FORCE) (C-136-03-X)
- L2 HORIZONTAL (LOW INSERTION FORCE) (C-136-04-X)

OPTIONS

- WT: WELD TAB (LEAD STYLE -02 & -L2 ONLY)
- LC: LOCKING CLIP (SEE FIG 3) (LEAD STYLE -01 & -L1 ONLY) (SEE NOTE 9)
- K: POLYIMIDE FILM PAD (LEAD STYLE -01 & -L1 ONLY) (USE K-DOT-.157-.250-.005) (SEE NOTE 7)
- TR: TAPE & REEL

PLATING

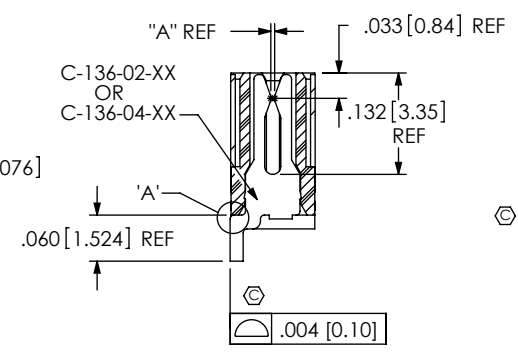
- T: MATTE TIN CONTACT AND TAIL
- TM: MATTE TIN CONTACT AND TAIL

TABLE 1

STYLE	"A"
-01	.005 [.13]
-02	.005 [.13]
-L1	.007 [.18]
-L2	.007 [.18]

RECOMMENDED CABLE WIDTH

{(NO. OF POSITIONS x .03937 [1.0000]) + .040 [1.00] +/- .010 [.25]}



SECTION "B"- "B"

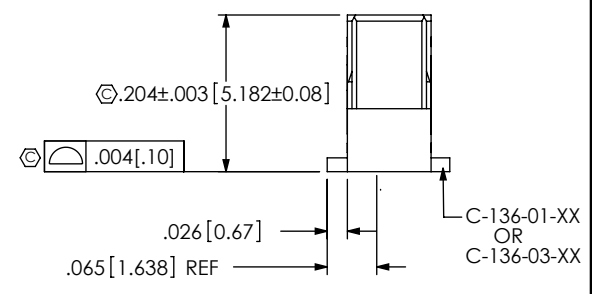
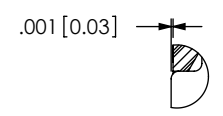


FIG 2

-01 /-L1: VERTICAL
DIFFERENT AS SHOWN, OTHERWISE SAME AS FIG 1

NOTES:

1. Ⓢ REPRESENTS A CRITICAL DIMENSION.
2. NOTE DELETED
3. BURR ALLOWANCE: .0015[.038] MAX.
4. MAXIMUM CUT FLASH: .010 [.25].
5. MINIMUM PUSHOUT FORCE: .5 LB.
6. TAIL SWAY MUST BE IN SAME DIRECTION ON ALL CONTACT TAILS.
7. KAPTON PAD (-K) AVAILABLE ON ALL POSITIONS FOR LEAD STYLE -01 & -L1 (SEE FIG. 4).
8. -05 THRU -10 POSITIONS ARE 2 PARTS PER AND REQUIRE MULTI-CUTTING.
9. DUE TO THE HIGH AMOUNT OF INSERTION FORCE NEEDED, THE -LC OPTION IS NOT COMPATIBLE WITH AUTO PLACEMENT. SAMTEC RECOMMENDS MANUAL PLACEMENT FOR ALL ASSEMBLIES WITH THE -LC OPTION.



DETAIL 'A'
SCALE 8 : 1

UNLESS OTHERWISE SPECIFIED, DIMENSIONS ARE IN INCHES.
TOLERANCES ARE:
DECIMALS ANGLES
.XX: ±.01 [.3]
.XXX: ±.005 [.13]
.XXXX: ±.0020 [.508]

PROPRIETARY NOTE
THIS DOCUMENT CONTAINS INFORMATION CONFIDENTIAL AND PROPRIETARY TO SAMTEC, INC. AND SHALL NOT BE REPRODUCED OR TRANSFERRED TO OTHER DOCUMENTS OR DISCLOSED TO OTHERS OR USED FOR ANY PURPOSE OTHER THAN THAT WHICH IT WAS OBTAINED WITHOUT THE EXPRESSED WRITTEN CONSENT OF SAMTEC, INC.



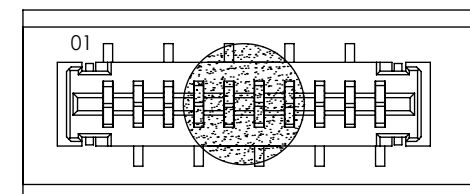
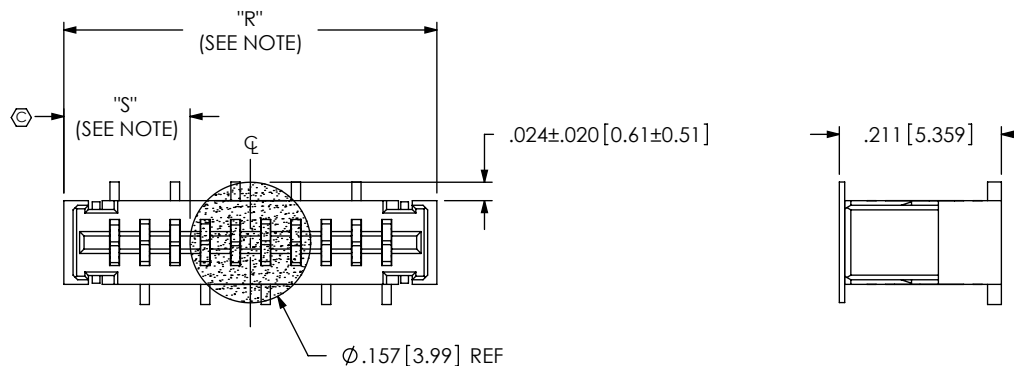
520 PARK EAST BLVD, NEW ALBANY, IN 47150
PHONE: 812-944-6733 FAX: 812-948-5047
e-Mail: info@SAMTEC.com code: 55322

DO NOT SCALE DRAWING SHEET SCALE: 4:1
HOUSING: BLACK LCP
CONTACT: PHOSPHOR BRONZE
WELD TABS: BRASS
F:\DWG\MISC\MKTG\FC1-XX-XX-XX-MKT.SLDDRW

DESCRIPTION: 1MM SOCKET
DWG. NO. FC1-XX-XX-XX-XX
BY: G. PURVIS 3/1/1999 SHEET 1 OF 2

FIG 4
-K: POLYIMIDE FILM PAD
STYLE -01 & -L1 ONLY

NOTE: "R" = USED MEASURED DIMENSION (REF)
"S" = $\{("R" - .1575 [4.00]) / 2\} \pm .020 [.51]$



POSITION #01 TO BE LOCATED AS SHOWN
WITH POSITION #01 IN DIRECTION OF ARROW ON TUBE
(PKG. VIEW FOR -01/-L1 SHOWN)

PACKAGING TUBE VIEWS

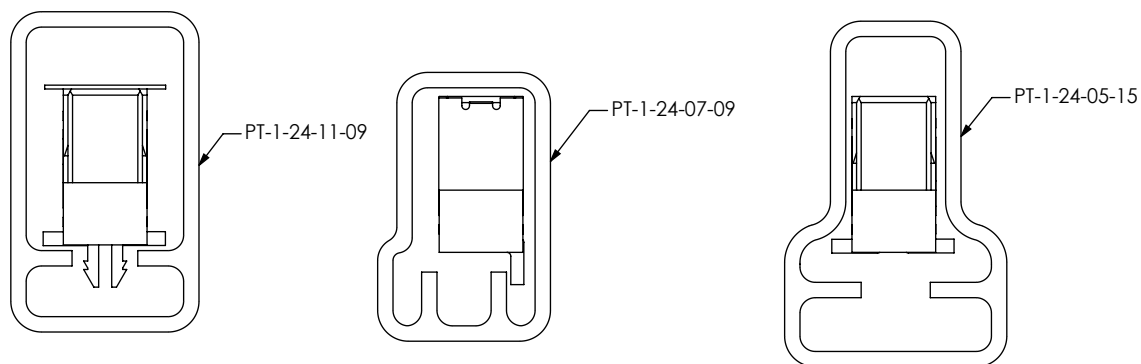
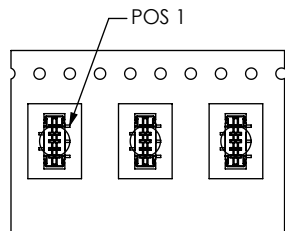
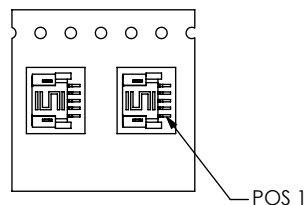


TABLE 2

LEAD	OPTION	PACKAGING TUBE	PLUG
-X2	NONE, -WT	PT-1-24-07-09	TP-24-02
-X1	NONE	PT-1-24-05-15	TP-24
-X1	-K, -LC, -K-LC	PT-1-24-11-09	TP-09



TAPE & REEL VIEW FOR VERTICAL PARTS



TAPE & REEL VIEW FOR HORIZONTAL PARTS

USER DIRECTION OF UNREELING
POCKETS NOT DETAILED



PROPRIETARY NOTE

THIS DOCUMENT CONTAINS INFORMATION
CONFIDENTIAL AND PROPRIETARY TO
SAMTEC, INC. AND SHALL NOT BE REPRODUCED
OR TRANSFERRED TO OTHER DOCUMENTS OR
DISCLOSED TO OTHERS OR USED FOR ANY
PURPOSE OTHER THAN THAT WHICH IT WAS
OBTAINED WITHOUT THE EXPRESSED WRITTEN
CONSENT OF SAMTEC, INC.

DO NOT SCALE DRAWING

SHEET SCALE: 4:1



520 PARK EAST BLVD, NEW ALBANY, IN 47150
PHONE: 812-944-6733 FAX: 812-948-5047
e-Mail: info@SAMTEC.com code: 55322

DESCRIPTION:

1MM SOCKET

DWG. NO.

FC1-XX-XX-XX-XX

BY: G. PURVIS 3/1/1999

SHEET 2 OF 2