



Chipsmall Limited consists of a professional team with an average of over 10 year of expertise in the distribution of electronic components. Based in Hongkong, we have already established firm and mutual-benefit business relationships with customers from,Europe,America and south Asia,supplying obsolete and hard-to-find components to meet their specific needs.

With the principle of "Quality Parts,Customers Priority,Honest Operation,and Considerate Service",our business mainly focus on the distribution of electronic components. Line cards we deal with include Microchip,ALPS,ROHM,Xilinx,Pulse,ON,Everlight and Freescale. Main products comprise IC,Modules,Potentiometer,IC Socket,Relay,Connector.Our parts cover such applications as commercial,industrial, and automotives areas.

We are looking forward to setting up business relationship with you and hope to provide you with the best service and solution. Let us make a better world for our industry!



Contact us

Tel: +86-755-8981 8866 Fax: +86-755-8427 6832

Email & Skype: info@chipsmall.com Web: www.chipsmall.com

Address: A1208, Overseas Decoration Building, #122 Zhenhua RD., Futian, Shenzhen, China



Product Specification

10G Serial Laserwire™ Jack

FCBJ110LE1

PRODUCT FEATURES

- Small footprint 10G serial port
- RJ-45 width
- RoHS-6 compliant (lead-free)
- Extended temperature range
-5°C to 85°C
- Enables high-density
- Copper contacts



APPLICATIONS

- Host-board connector for Laserwire™ cables
- High-density switches
- NIC applications
- LAN On Motherboard

Finisar's FCBJ110LE1 Laserwire™ Jack is the host-board connector for Laserwire™ active cables (P/N FCBP110LD1Lxx and FCBC110LD1Lxx). The Laserwire™ Jack provides the smallest connector host-board footprint compared to alternative 10G serial solutions. An evaluation board (P/N FDB-1033) is also available.

PRODUCT SELECTION

FCBJ110LE1

I. Pin Descriptions

Pin	Symbol	Name/Description	Note
1	V _{EE}	Ground	1
2	TX-	Transmitter Inverted DATA in	
3	TX+	Transmitter Non-Inverted DATA in	
4	V _{EE}	Ground	1
5	V _{CC}	Power Supply (+3.3V ± 5%)	
6	F	Fault signal	2
7	CAB-ABS	Cable absent, connected to Vee within cable plug	3
8	NC	NC	4
9	V _{EE}	Ground	1
10	RX+	Receiver Non-inverted DATA out	
11	RX-	Receiver Inverted DATA out	
12	V _{EE}	Ground	1

Notes:

1. Circuit ground is internally isolated from chassis ground.
2. Open collector output. Should be pulled up with 4.7kΩ - 10kΩ on host board to a voltage between 2.0V and 3.6V. High indicates a fault condition.
3. Should be pulled up with 4.7kΩ - 10kΩ on host board to a voltage between 2.0V and 3.6V. High indicates no cable present
4. Reserved for future applications. No Connect in Host.

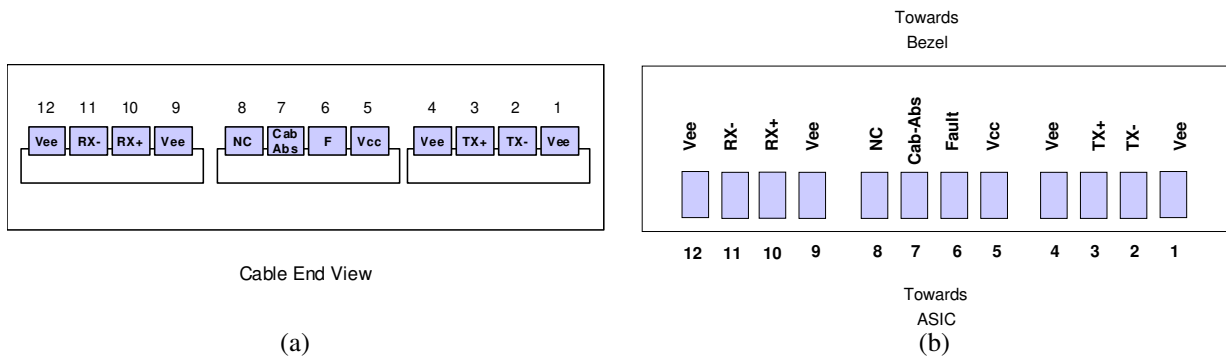


Figure 1. Pinout : (a) Cable plug end view, (b) host board decal top view.

II. Absolute Maximum Ratings

Parameter	Symbol	Min	Typ	Max	Unit	Note
Maximum Supply Voltage	V _{CC}	-0.5		4.0	V	
Storage Temperature	T _S	-40		100	°C	
Case Operating Temperature	T _{OP}	-5		85	°C	
Relative Humidity	RH	0		85	%	1

Notes:

1. Non-condensing.

III. Application Note of Recommended Host-Board Connections

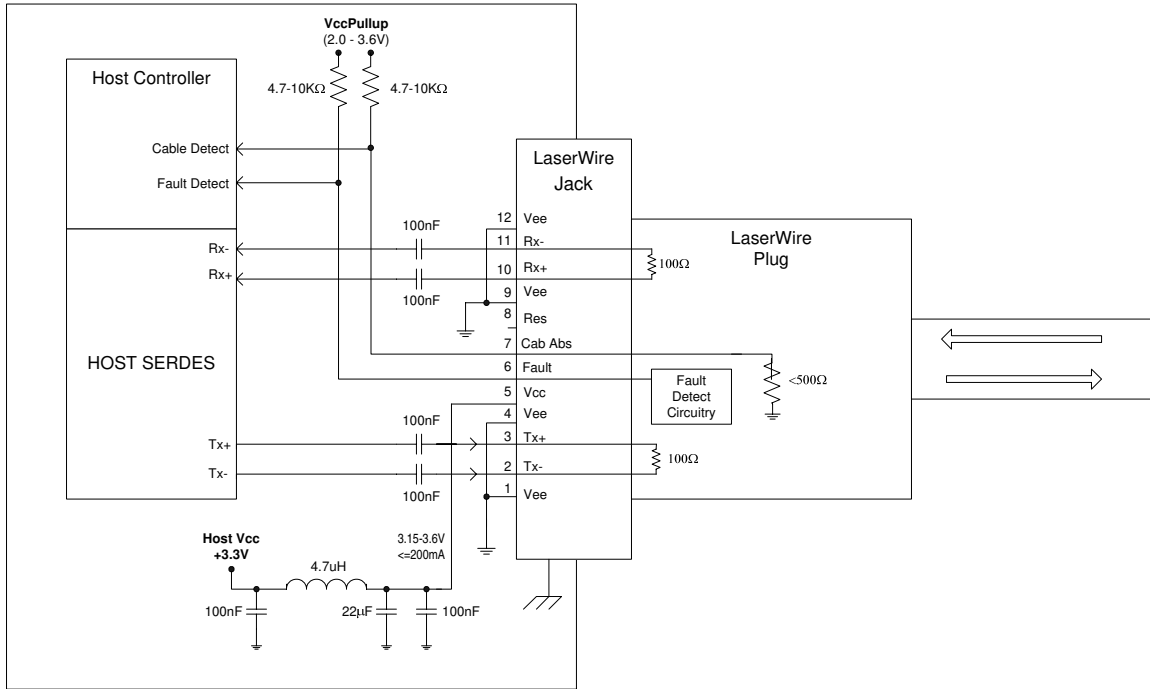


Figure 2. Recommended host board configuration showing power supply filtering, AC coupling caps, and status pull-up resistors.

IV. Materials

Housing	Cast zinc, nickel plated
EMI Shields	Stainless steel
Mounting Posts	Stainless steel, nickel plated
Contacts	Copper alloy, gold plated
Insulators	Liquid crystal polymer, glass filled, 94V-0 flammability rating

V. Regulatory Compliance

Finisar Laserwire™ Jack is RoHS Compliant. Copies of certificate are available at Finisar Corporation upon request.

VI. Mechanical Specifications

The PCB attachment process requires manual insertion. The mounting posts are thru-hole soldered and the contacts are surface mount reflow soldered.

PCB should be compatible with 10G RF design and lead free soldering

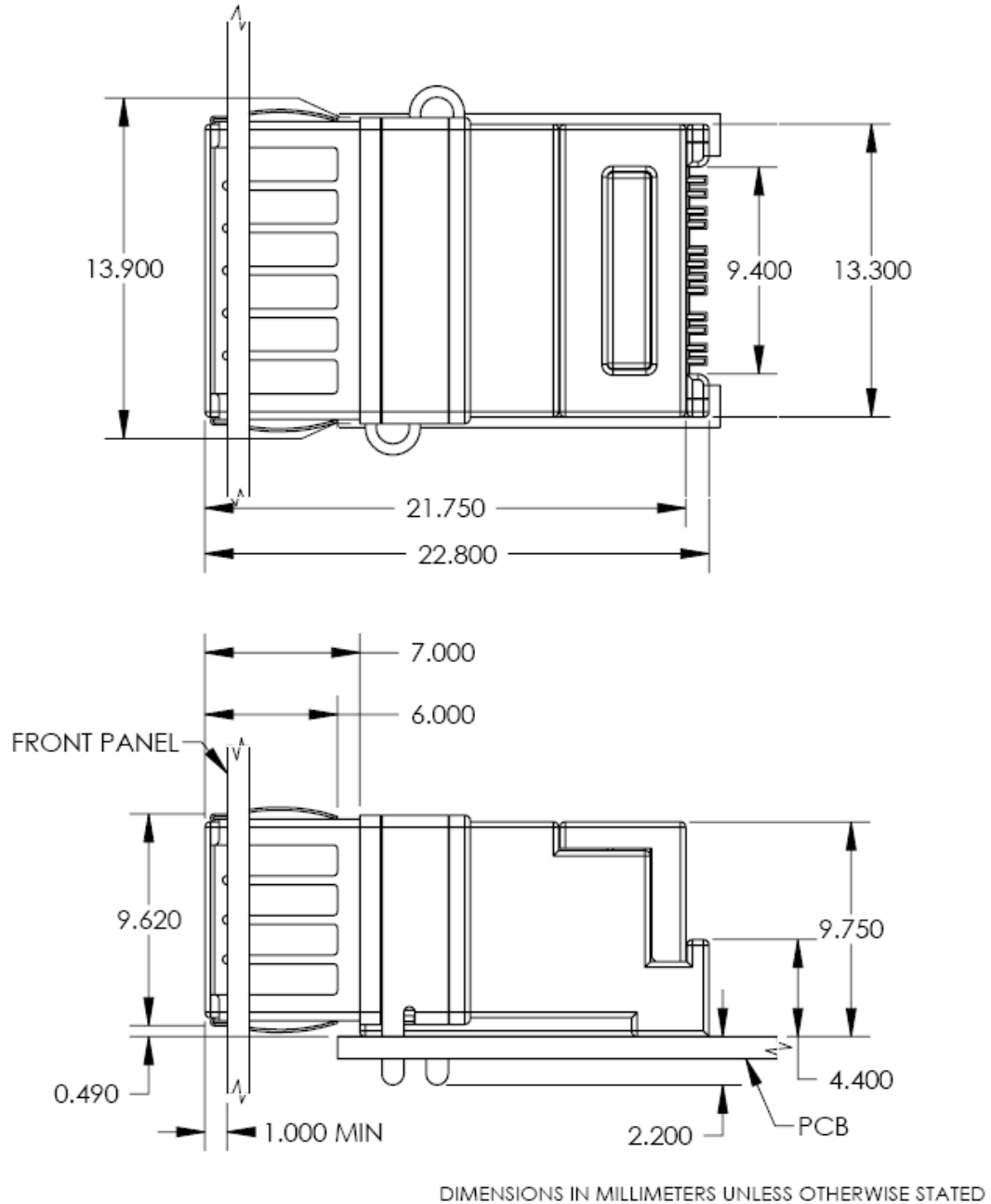


Figure 3. Top view and side view (with sample bezel shown).

VII. PCB Layout and Bezel Recommendations

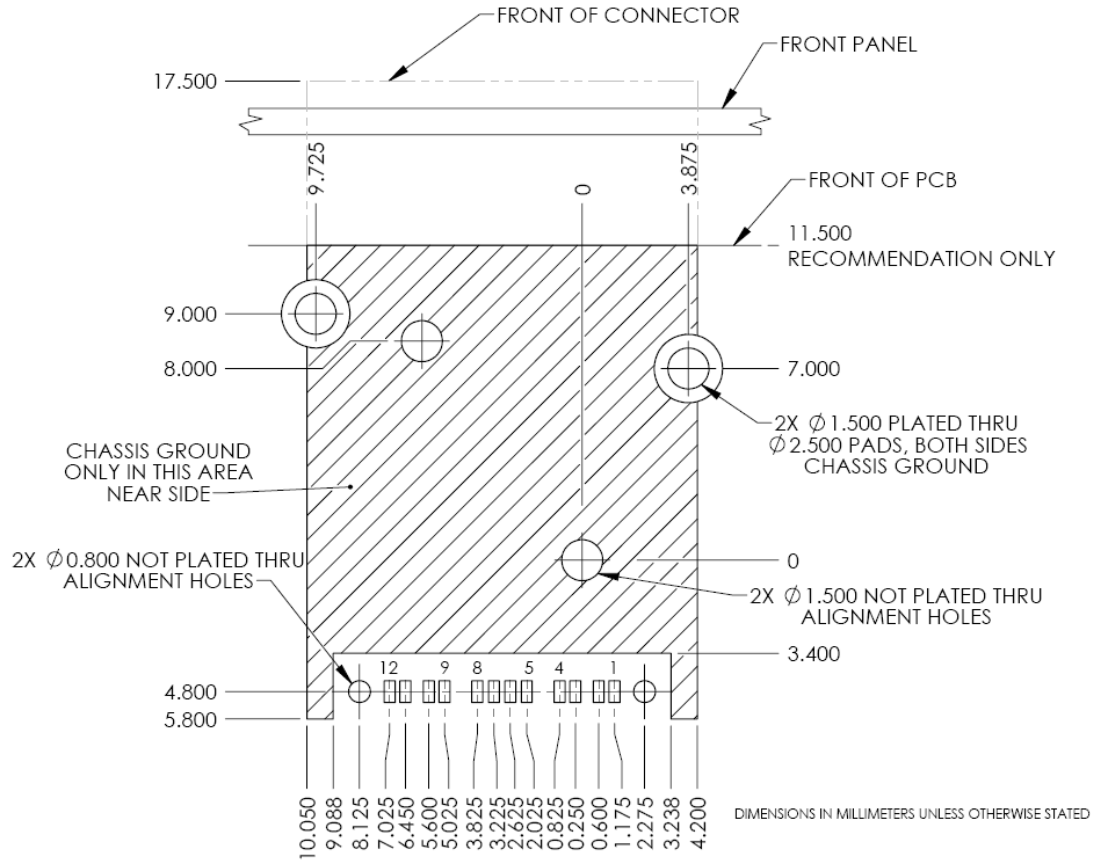


Figure 4. Host PCB layout (component side).

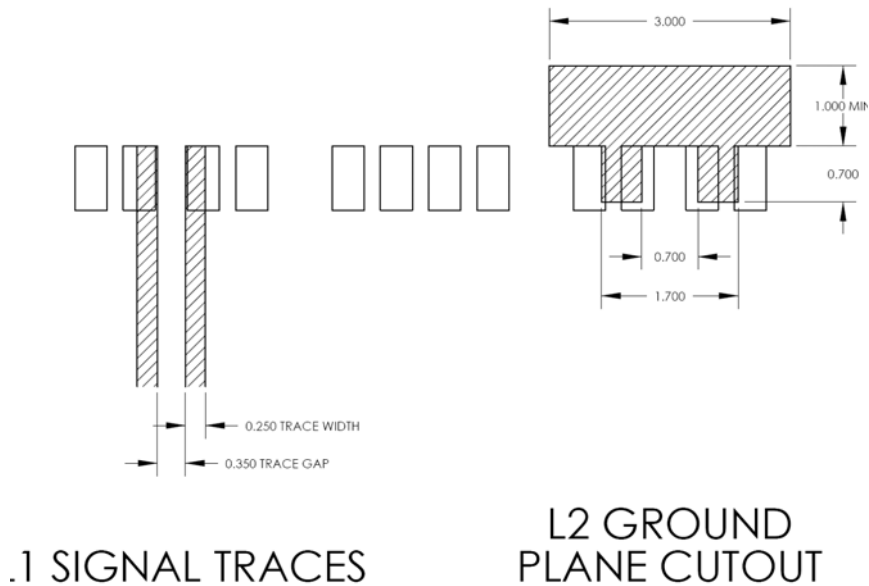


Figure 5. Layout rules for a 0.15mm L1-L2 stackup (top view). Adjustment of these dimensions is required if a different stackup is utilized.

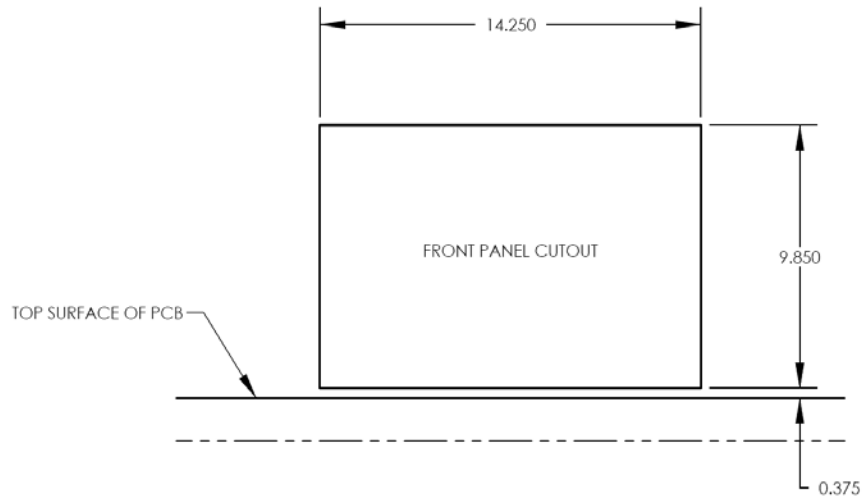


Figure 6. Bezel position dimensions

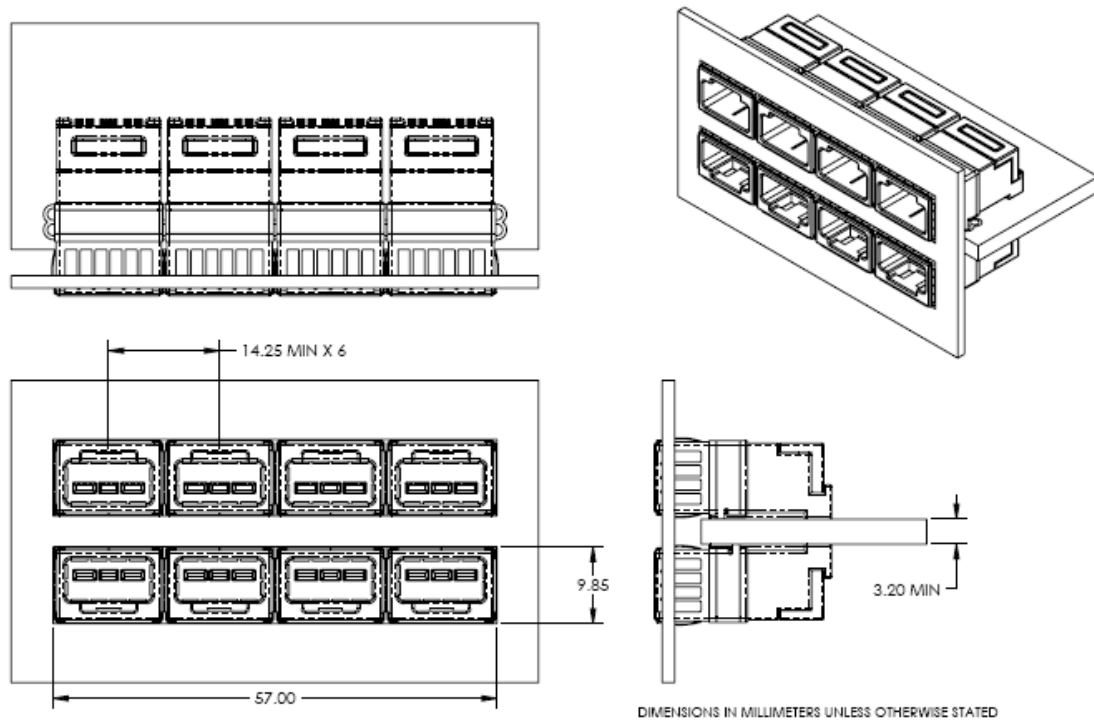


Figure 7. High-density 14.25mm x 4 x 2 sided (belly-to-belly) configuration

VIII. References

1. SFF-8431 – SFP+ Specifications, SFF Committee.

X. For More Information

Finisar Corporation
1389 Moffett Park Drive
Sunnyvale, CA 94089-1133
Tel. 1-408-548-1000
Fax 1-408-541-6138
sales@finisar.com
www.finisar.com