



Chipsmall Limited consists of a professional team with an average of over 10 year of expertise in the distribution of electronic components. Based in Hongkong, we have already established firm and mutual-benefit business relationships with customers from,Europe,America and south Asia,supplying obsolete and hard-to-find components to meet their specific needs.

With the principle of “Quality Parts,Customers Priority,Honest Operation,and Considerate Service”,our business mainly focus on the distribution of electronic components. Line cards we deal with include Microchip,ALPS,ROHM,Xilinx,Pulse,ON,Everlight and Freescale. Main products comprise IC,Modules,Potentiometer,IC Socket,Relay,Connector.Our parts cover such applications as commercial,industrial, and automotives areas.

We are looking forward to setting up business relationship with you and hope to provide you with the best service and solution. Let us make a better world for our industry!



Contact us

Tel: +86-755-8981 8866 Fax: +86-755-8427 6832

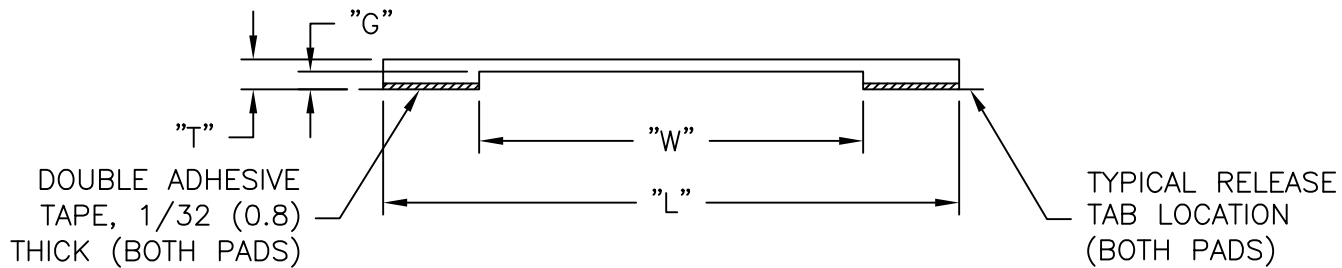
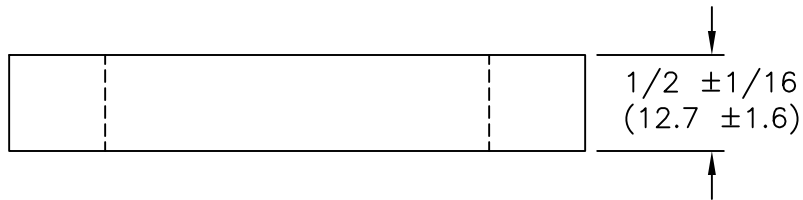
Email & Skype: info@chipsmall.com Web: www.chipsmall.com

Address: A1208, Overseas Decoration Building, #122 Zhenhua RD., Futian, Shenzhen, China



PART NO.	CLAMP WIDTH "L" +1/8 (3.2) -0 (0.0)	OPENING WIDTH "W" +1/16 (1.6) -0 (0.0)	CLAMP THICKNESS "T" +.015 (0.4) -.010 (0.3)	HOLDING THICKNESS "G" +.010 (0.3) -.020 (0.5)
FCC-4-3-RT	1-1/2 (38.1)	1/2 (12.7)	5/32 (4.0)	3/32 (2.4)
*FCC-6-3-RT	1.70 (43.2)	.70 (17.8)		
FCC-8-3-RT	2.0 (50.8)	1.0 (25.4)		
FCC-16-3-RT	3.0 (76.2)	2.0 (50.8)		
*FCC-24-3-RT	4.0 (101.6)	3.0 (76.2)		

*PARTS AVAILABLE BY SPECIAL ORDER



NOTES:

1. MATERIAL: PVC (RMS-04).
COLOR: BLACK.
2. TAPE: ACRYLIC ADHESIVE TAPE (RMS-15)

E			TITLE: FLAT CABLE CLAMPS				DWG IN IN(MM)		FINAL	
SEE CO 200604 FOR CHANGES			SK 12.01.10	FILE # FCC		DWN: P.B.	APP:	FINAL		
SEE ECN #1312 FOR CHANGES			SK 04.11.07	MAT'L: SEE NOTE		DT: 03-10-95	DT:	PART #		PRINT TYPE
DIM "W" .70 (17.8) WAS 3/4(19.1); CHANGED FILE NO.			SM 03.30.01	RE: RICHCO, INC.		RICHCO INC. PO BOX 804238, CHICAGO, 60680 (773) 539-4060		SEE TABLE		
CONVERTED TO ACAD			PB 03.10.95	TOLERANCES UNLESS NOTED .XX=±.010 .XXX=±.005 FRAC=±1/64 ANG=1°						CA
ADDED P/N FCC-6-3-RT			RS 05.18.92							
DESCRIPTION			ENGR DATE							