



Chipsmall Limited consists of a professional team with an average of over 10 year of expertise in the distribution of electronic components. Based in Hongkong, we have already established firm and mutual-benefit business relationships with customers from,Europe,America and south Asia,supplying obsolete and hard-to-find components to meet their specific needs.

With the principle of “Quality Parts,Customers Priority,Honest Operation,and Considerate Service”,our business mainly focus on the distribution of electronic components. Line cards we deal with include Microchip,ALPS,ROHM,Xilinx,Pulse,ON,Everlight and Freescale. Main products comprise IC,Modules,Potentiometer,IC Socket,Relay,Connector.Our parts cover such applications as commercial,industrial, and automotives areas.

We are looking forward to setting up business relationship with you and hope to provide you with the best service and solution. Let us make a better world for our industry!



## Contact us

Tel: +86-755-8981 8866 Fax: +86-755-8427 6832

Email & Skype: info@chipsmall.com Web: www.chipsmall.com

Address: A1208, Overseas Decoration Building, #122 Zhenhua RD., Futian, Shenzhen, China





User Guide for  
**FEBFOD8012\_CAN**  
Evaluation Board

**Bi-Directional Logic Gate Optocoupler  
Provides Proven and Reliable Isolation to  
the Control Access Network (CAN)  
Interface**

**Featured Fairchild Product:  
FOD8012**

*Direct questions or comments  
about this evaluation board to:  
“Worldwide Direct Support”*

[Fairchild Semiconductor.com](http://Fairchild Semiconductor.com)

## Table of Contents

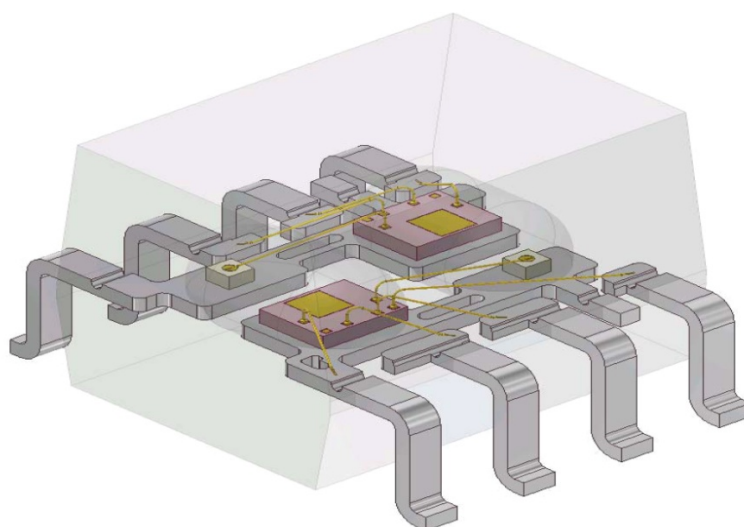
1. Introduction.....	3
1.1. Description .....	3
2. Photographs.....	4
3. Printed Circuit Board .....	4
3.1. Board Setup and Operation .....	5
3.2. Test Procedures and Conditions.....	5
4. Schematic.....	6
5. Scope Shots.....	7
6. Conclusion .....	8
7. Revision History .....	9



This user guide supports the evaluation board for the FOD8012. It should be used in conjunction with the FOD8012 datasheet as well as Fairchild's application notes and technical support team. Please visit Fairchild's website at [www.fairchildsemi.com](http://www.fairchildsemi.com).

## 1. Introduction

The FOD8012 is an industry-first, full-duplex, bi-directional, logic-gate optocoupler with high noise immunity as well as proven and reliable optical isolation. It is highly integrated with two optically coupled channels arranged in a bi-directional configuration illustrated in Figure 1. The FOD8012 is housed in a compact 8-pin small-outline package. Each optocoupler channel consists of a high-speed AlGaAs LED driven by a CMOS buffer IC coupled to a CMOS detector IC.



**Figure 1. 3-Dimensional Illustration of the Internal Die Set of Fairchild's Optoplanar® Package Construction**

### 1.1. Description

The FOD8012 supports isolated communication between systems of digital signals without conducting ground loops or hazardous voltages. Unlike competitive devices, which provide less than 0.1 mm optical isolation gap, the FOD8012 features a 0.4 mm (minimum) optical isolation gap for proven, reliable isolation. The device also features a fast switching speed, up to 15 Mbit/s, and uses Fairchild's Optoplanar® packaging technology and optimized IC design to achieve high Common Mode Rejection (CMR) of 20 kV/μs minimum, allowing the device to operate in noisy industrial environments.

Additionally, the FOD8012 offers an extended industrial temperature range of -40°C to +110°C and a 3.3 V or 5.0 V supply voltage to facilitate logic level translation. The device's high isolation voltage is certified by UL1577 and DIN\_EN/IEC60747-5-2 for increased reliability.

## 2. Photographs

The evaluation includes the FOD8012, a bi-directional logic-gate optocoupler, that isolates the driver input and receiver output of a half-duplex 5 V CAN transceiver.

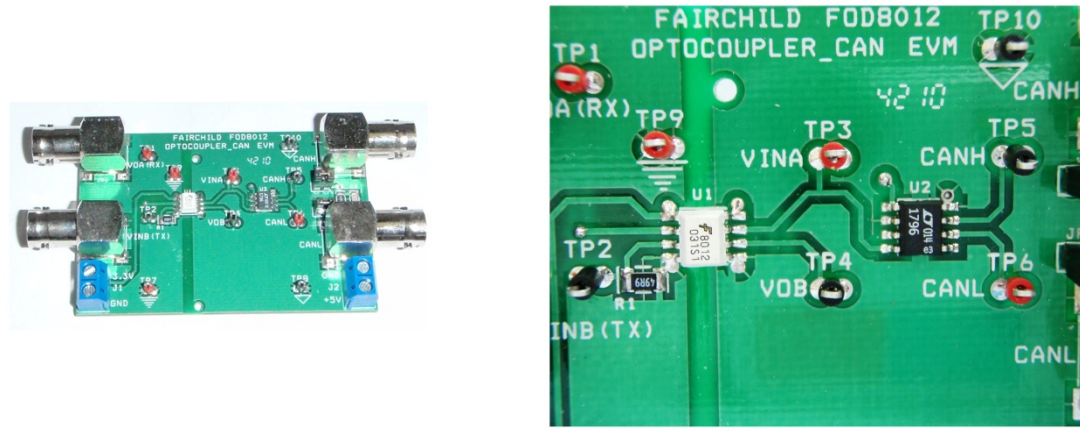


Figure 2. Photographs of the FEBFOD8012\_CAN Board

## 3. Printed Circuit Board

Oscilloscope probes can be connected to test points TP1 through TP6. TP7 through TP10 are grounds.

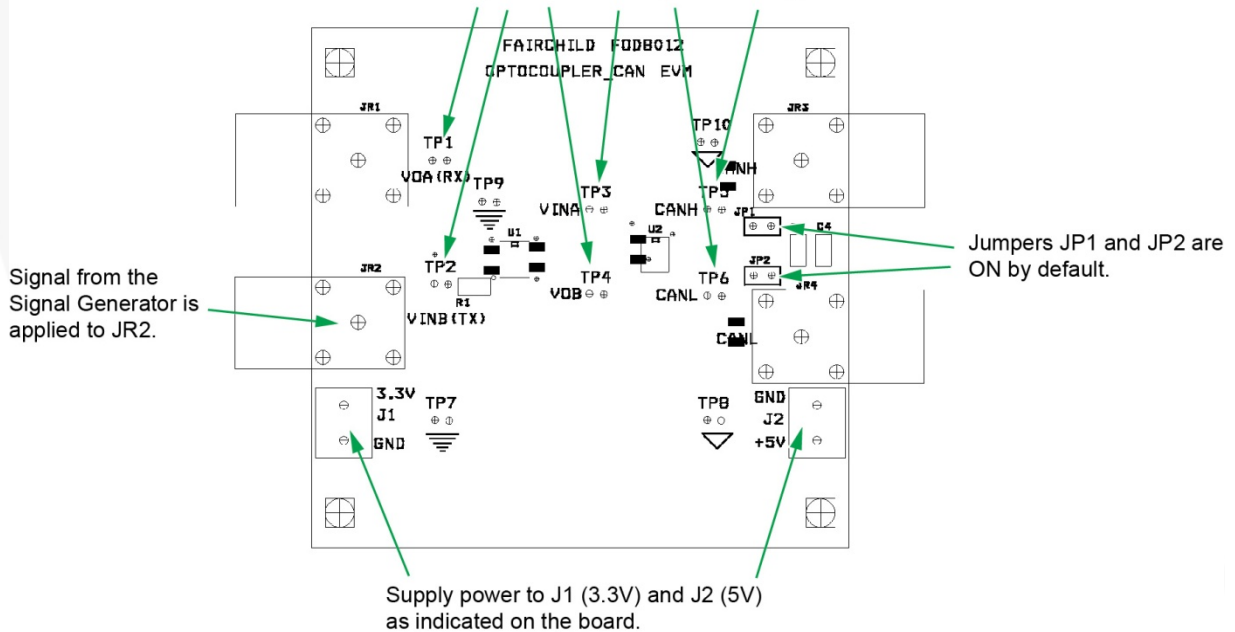


Figure 3. FEBFOD8012\_CAN Board Setup

### 3.1. Board Setup and Operation

The FEBFOD8012\_CAN evaluation board enables users to make a quick and accurate assessment of Fairchild's FOD8012 in a bi-directional data transmission application. The setup requires two power supply sources.  $V_{DD1}$  (J1) is on one side of the isolation barrier with  $V_{DD2}$  and  $V_{CC}$  (J2) is on the other side of the isolation barrier, sharing the same power supply source. A square wave is applied to one of the FOD8012 channels (VINB / VOB), which in turn drives the CAN transceiver. The resulting CAN output is fed back to the input of the other FOD8012 channel (VINA / VOA). This completes the bi-directional data transmission loop. Test points located at selected positions (as indicated in Figure 3 and Figure 4) allow the user to probe the signals and measure the switching characteristics of the device.

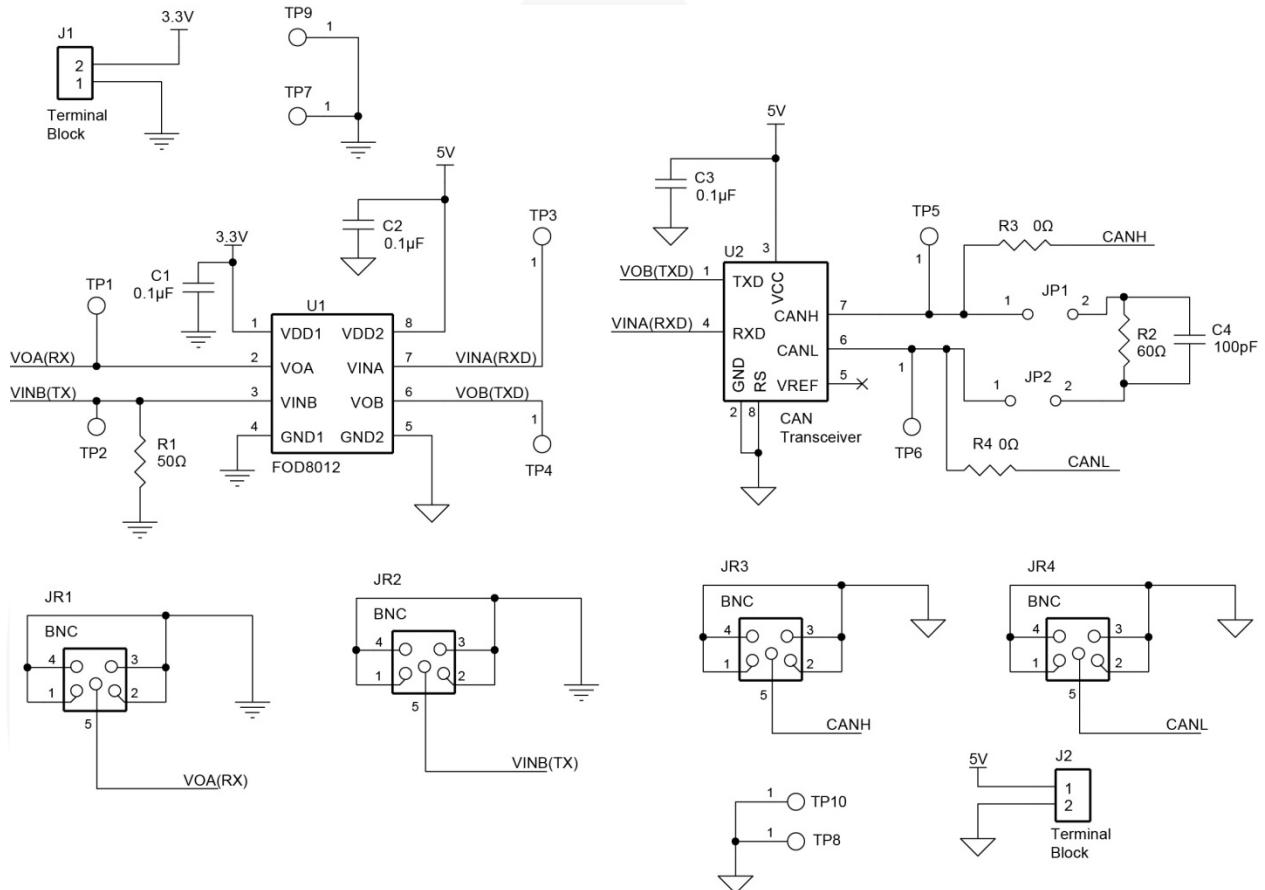
### 3.2. Test Procedures and Conditions

The following steps and Figure 3 describe the setup of the FEBFOD8012\_CAN board.

1. Jumpers JP1 and JP2 are connected on the board by default. They connect the CAN transceiver output to the resistive and capacitive loads R2 (60  $\Omega$ ) and C4 (100 pF), respectively. The user has the flexibility of connecting the CAN driver output / receiver inputs to another load / signal source using the BNC (CANH and CANL) connectors and removing the jumpers (not covered in this document).
2. With the power off, connect the power supplies to the board. They are set to 3.3 V (J1) or 5.0 V (J2) as specified on the board. Make sure that the supply voltages do not exceed the absolute maximum rating of the devices, as this may damage the device.
3. Turn on the power supplies.
4. Connect the output of the signal generator to the BNC connector (JR2). The signal generator settings are: square wave = 62.5 kHz, duty cycle = 50%, amplitude = 3.3 V, output impedance = 50  $\Omega$ .
5. Enable the signal generator. The signal waveforms can be probed at various test points, as shown in Figure 3:
  - TP1: VOA (RX) is the output voltage from channel-A of the FOD8012.
  - TP2: VINB (TX) is the input voltage to channel-B of the FOD8012. Signal from the signal generator is applied here.
  - TP3: VINA is the input voltage to channel-A of the FOD8012. This signal is supplied by the CAN transceiver.
  - TP4: VOB is the output voltage from channel-B of the FOD8012, which in turn drives the input of the CAN transceiver.
  - TP5 & TP6: CANH and CANL are the CAN transceivers outputs.
  - TP7 to TP10: grounds.

## 4. Schematic

The FEBFOD8012\_CAN board is designed to assist evaluation of the FOD8012 timing sequence and AC test performance with a CAN transceiver. It should be used in conjunction with the product datasheet.



**Figure 4. Evaluation Board Schematic**

## 5. Scope Shots

The scope shots in Figure 5 through Figure 7 illustrate normal operation of the CAN data transfer via the isolated channels of the FOD8012. Refer to Figure 4 for the schematic.

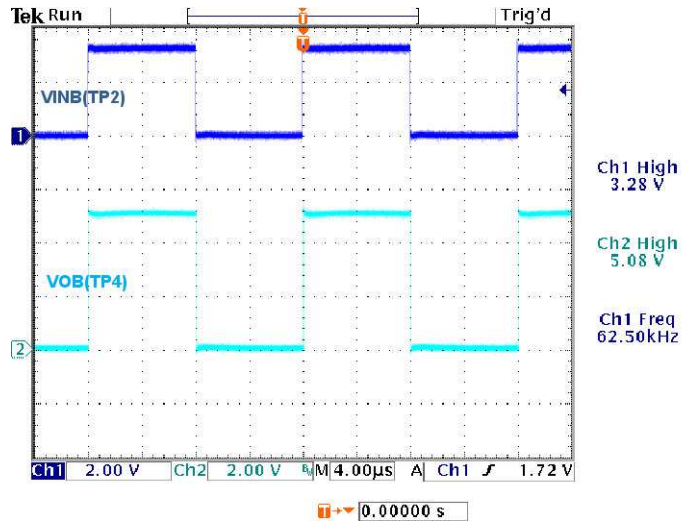


Figure 5. VINB is the Input Signal; FOD8012 Output Signal, VOB, Drives CAN Transceiver

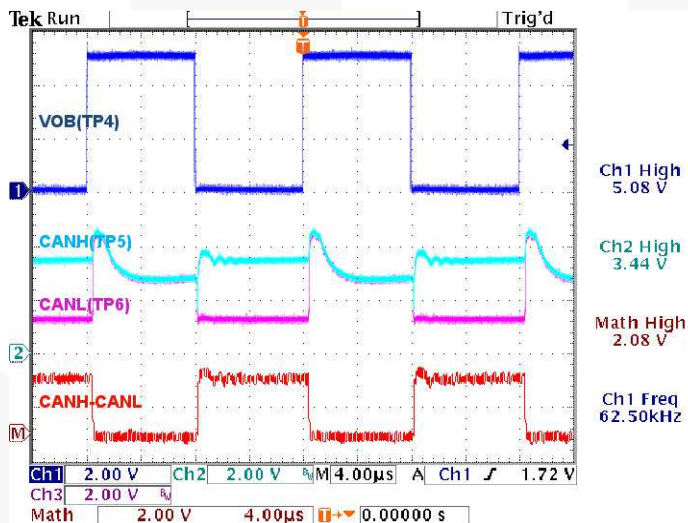


Figure 6. FOD8012 Output Signal, VOB, Drives CAN Transceiver; Resulting CAN Output Signals, CANH and CANL, are Single-Ended Output Signals;  $V_{(CANH-CANL)}$  = Differential Output Signal



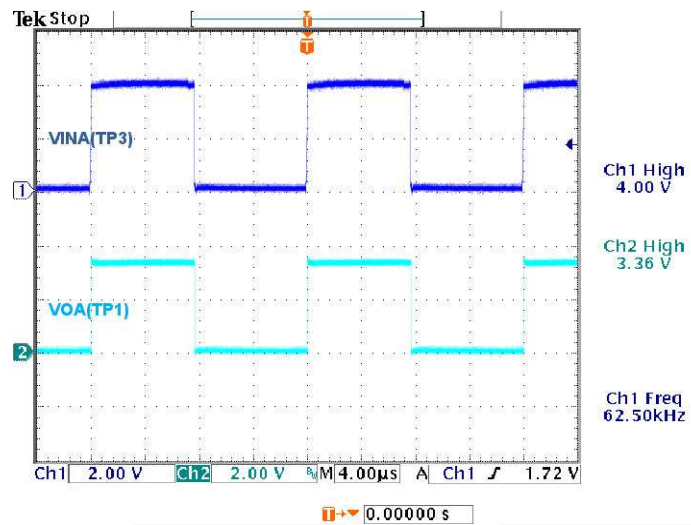


Figure 7. Output Signal from CAN Transceiver Drives Input, VINA, of FOD8012, VOA = FOD8012 Output Signal

## 6. Conclusion

The FEBFOD8012\_CAN evaluation board allows the user to evaluate the performance of the FOD8012 in a bi-directional data-transmission application with the CAN transceiver. Measurement results clearly demonstrate the high-speed performance of the FOD8012.

## 7. Revision History

Rev.	Date	Description
1.0.0	August 2012	Initial Release

---

### WARNING AND DISCLAIMER

Replace components on the Evaluation Board only with those parts shown on the parts list (or Bill of Materials) in the Users' Guide. Contact an authorized Fairchild representative with any questions.

This board is intended to be used by certified professionals, in a lab environment, following proper safety procedures. Use at your own risk. The Evaluation board (or kit) is for demonstration purposes only and neither the Board nor this User's Guide constitute a sales contract or create any kind of warranty, whether express or implied, as to the applications or products involved. Fairchild warrants that its products meet Fairchild's published specifications, but does not guarantee that its products work in any specific application. Fairchild reserves the right to make changes without notice to any products described herein to improve reliability, function, or design. Either the applicable sales contract signed by Fairchild and Buyer or, if no contract exists, Fairchild's standard Terms and Conditions on the back of Fairchild invoices, govern the terms of sale of the products described herein.

#### DISCLAIMER

FAIRCHILD SEMICONDUCTOR RESERVES THE RIGHT TO MAKE CHANGES WITHOUT FURTHER NOTICE TO ANY PRODUCTS HEREIN TO IMPROVE RELIABILITY, FUNCTION, OR DESIGN. FAIRCHILD DOES NOT ASSUME ANY LIABILITY ARISING OUT OF THE APPLICATION OR USE OF ANY PRODUCT OR CIRCUIT DESCRIBED HEREIN; NEITHER DOES IT CONVEY ANY LICENSE UNDER ITS PATENT RIGHTS, NOR THE RIGHTS OF OTHERS.

#### LIFE SUPPORT POLICY

FAIRCHILD'S PRODUCTS ARE NOT AUTHORIZED FOR USE AS CRITICAL COMPONENTS IN LIFE SUPPORT DEVICES OR SYSTEMS WITHOUT THE EXPRESS WRITTEN APPROVAL OF THE PRESIDENT OF FAIRCHILD SEMICONDUCTOR CORPORATION.

As used herein:

- Life support devices or systems are devices or systems which, (a) are intended for surgical implant into the body, or (b) support or sustain life, or (c) whose failure to perform when properly used in accordance with instructions for use provided in the labeling, can be reasonably expected to result in significant injury to the user.
- A critical component is any component of a life support device or system whose failure to perform can be reasonably expected to cause the failure of the life support device or system, or to affect its safety or effectiveness.

---

### ANTI-COUNTERFEITING POLICY

Fairchild Semiconductor Corporation's Anti-Counterfeiting Policy. Fairchild's Anti-Counterfeiting Policy is also stated on our external website, [www.fairchildsemi.com](http://www.fairchildsemi.com), under Sales Support.

Counterfeiting of semiconductor parts is a growing problem in the industry. All manufacturers of semiconductor products are experiencing counterfeiting of their parts. Customers who inadvertently purchase counterfeit parts experience many problems such as loss of brand reputation, substandard performance, failed applications, and increased cost of production and manufacturing delays. Fairchild is taking strong measures to protect ourselves and our customers from the proliferation of counterfeit parts. Fairchild strongly encourages customers to purchase Fairchild parts either directly from Fairchild or from Authorized Fairchild Distributors who are listed by country on our web page cited above. Products customers buy either from Fairchild directly or from Authorized Fairchild Distributors are genuine parts, have full traceability, meet Fairchild's quality standards for handling and storage and provide access to Fairchild's full range of up-to-date technical and product information. Fairchild and our Authorized Distributors will stand behind all warranties and will appropriately address any warranty issues that may arise. Fairchild will not provide any warranty coverage or other assistance for parts bought from Unauthorized Sources. Fairchild is committed to combat this global problem and encourage our customers to do their part in stopping this practice by buying direct or from authorized distributors.

---

### EXPORT COMPLIANCE STATEMENT

These commodities, technology, or software were exported from the United States in accordance with the Export Administration Regulations for the ultimate destination listed on the commercial invoice. Diversion contrary to U.S. law is prohibited.

U.S. origin products and products made with U.S. origin technology are subject to U.S Re-export laws. In the event of re-export, the user will be responsible to ensure the appropriate U.S. export regulations are followed.