



Chipsmall Limited consists of a professional team with an average of over 10 year of expertise in the distribution of electronic components. Based in Hongkong, we have already established firm and mutual-benefit business relationships with customers from,Europe,America and south Asia,supplying obsolete and hard-to-find components to meet their specific needs.

With the principle of “Quality Parts,Customers Priority,Honest Operation,and Considerate Service”,our business mainly focus on the distribution of electronic components. Line cards we deal with include Microchip,ALPS,ROHM,Xilinx,Pulse,ON,Everlight and Freescale. Main products comprise IC,Modules,Potentiometer,IC Socket,Relay,Connector.Our parts cover such applications as commercial,industrial, and automotives areas.

We are looking forward to setting up business relationship with you and hope to provide you with the best service and solution. Let us make a better world for our industry!



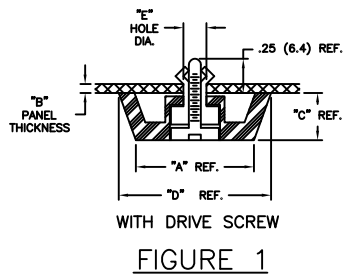
Contact us

Tel: +86-755-8981 8866 Fax: +86-755-8427 6832

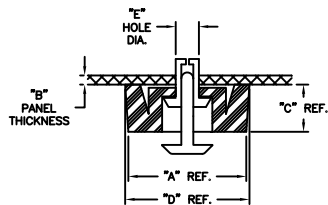
Email & Skype: info@chipsmall.com Web: www.chipsmall.com

Address: A1208, Overseas Decoration Building, #122 Zhenhua RD., Futian, Shenzhen, China

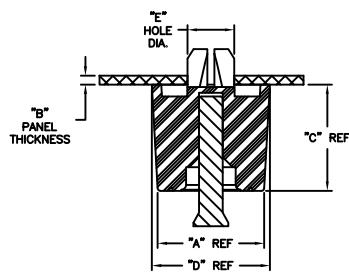




WITH DRIVE SCREW
FIGURE 1



WITH PUSH RIVET
FIGURE 2



WITH RIVET PIN
FIGURE 3

PART NO.	FOOT MAT'L	"A" REF.	"B" THKS. RANGE	"C" REF.	"D" REF.	"E" HOLE DIAMETER	FIGURE
FF-001B	RMS-76	.79 (20)	.039-.091 (1.0-2.3)	.55 (14)	.95 (24)	.197-.201(5.0-5.1)	1
FF-004B		.71 (18)					
FF-003-P3x5.5B	RMS-42	.53 (13.5)	.031-.071 (0.8-1.8)	.22 (5.5)	.56 (14.2)	.122 (3.1)-.126 (3.2)	2
FF-005-P4x5B	RMS-76	.79 (20)	.031-.071 (0.8-1.8)	.17 (4.2)	.83 (21)	.161-.165 (4.1-4.2)	
FF-005-P4x6B			.071-.111 (1.8-2.8)				
FF-005-P4x7B			.114-.146 (2.9-3.7)				
FF-005-P4x8B			.150-.189 (3.8-4.8)				
FF-006-P4x6B			.024-.039 (0.6-1.0)				
FF-006-P4x7B			.039-.079 (1.0-2.0)				
FF-006-P4x8B	.079-.118 (2.0-3.1)	.24 (6)	.59 (15)	.200 (5.1)-.205 (5.2)			
FF-006-P5x6.5B	.031-.047 (0.8-1.2)						
FF-006-P5x7.5B	.051-.091 (1.3-2.3)						
FF-008-P4x6B	RMS-76	.79 (20)	.031-.071 (0.8-1.8)	.31 (8)	.83 (21)	.161-.165 (4.1-4.2)	
FF-008-P4x7B			.075-.110 (1.9-2.8)				
FF-008-P4x8B			.114-.157 (2.9-4.0)				
FF-009-P4x6B			0-.031 (0-0.8)				
FF-009-P4x7B			.031-.079 (0.8-2.0)				
FF-009-P4x8B			.083-.118 (2.1-3.0)				
FF-010-P4x7B	.55 (14)	.039-.079 (1.0-2.0)	.079-.118 (2.0-3.1)	.35 (9)	.59 (15)	.161-.165 (4.1-4.2)	
FF-010-P4x8B							
FF-13-P3.5x4.5B	.39 (10)	.020-.047 (0.5-1.2)	.047-.079 (1.2-2.0)	.16 (4)	.43 (10.8)	.142-.146 (3.6-3.7)	
FF-13-P3.5x5.5B							
FF-13-P3.5x6.0B							
FF-13-P3.5x7.0B							
FF-026-M40	RMS-416	.71 (18)	.020-.047 (0.5-1.2)	.71 (18)	.79 (20)	.315 (8)-.319 (8.1)	3

NOTES:
 1. MATERIAL:
 FIGURE 1: DRIVE SCREW: ACETAL UL94 HB (RMS-39)
 GROMMET: NYLON 6 UL94 V-2 (RMS-52)
 FOOT: THERMOPLASTIC ELASTOMER UL94 HB (RMS-76)
 FIGURE 2: PUSH RIVET ACETAL UL94 HB (RMS-63)
 GROMMET: NYLON 6 UL94 V-2 (RMS-52)
 FOOT: THERMOPLASTIC ELASTOMER UL94 HB (RMS-76) OR (RMS-42)
 FIGURE 3: RIVET PIN: POLYPROPYLENE UL94 HB (RMS-126)
 FOOT: THERMOPLASTIC ELASTOMER UL94 HB (RMS-416)
 2. COLOR: BLACK

M	SEE CO 200773 FOR CHANGES	SK 04.30.12
L	SEE CO 200638 FOR CHANGES	SK 03.16.11
-	SEE ENGINEERING FOR REV A-K	-
REV	DESCRIPTION	ENGR DATE

TITLE: FAST FEET		DWG IN IN (MM) FINAL		PRINT TYPE CA	
TOLERANCES UNLESS NOTED .XX=±.010 .XXX=±.005 FRAC=±1/64 ANG=±1'	FILE # FF	DWN: P.B.	APP:	PART #	
	MAT'L: SEE NOTES	DT: 04-29-94	DT:	SEE TABLE	
	RE: RICHCO, INC.	RICHCO INC. PO BOX 804238, CHICAGO, 60680 (773) 539-4060			