



Chipsmall Limited consists of a professional team with an average of over 10 year of expertise in the distribution of electronic components. Based in Hongkong, we have already established firm and mutual-benefit business relationships with customers from,Europe,America and south Asia,supplying obsolete and hard-to-find components to meet their specific needs.

With the principle of “Quality Parts,Customers Priority,Honest Operation,and Considerate Service”,our business mainly focus on the distribution of electronic components. Line cards we deal with include Microchip,ALPS,ROHM,Xilinx,Pulse,ON,Everlight and Freescale. Main products comprise IC,Modules,Potentiometer,IC Socket,Relay,Connector.Our parts cover such applications as commercial,industrial, and automotives areas.

We are looking forward to setting up business relationship with you and hope to provide you with the best service and solution. Let us make a better world for our industry!



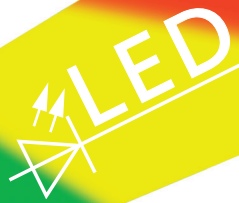
## Contact us

Tel: +86-755-8981 8866 Fax: +86-755-8427 6832

Email & Skype: info@chipsmall.com Web: www.chipsmall.com

Address: A1208, Overseas Decoration Building, #122 Zhenhua RD., Futian, Shenzhen, China





**Handle Series FG4-LH**

Functional handle with a three-coloured illuminatable handle ledge. The LED colours red, yellow and green can be used to display the current operating status of the machine for example.

**Material and surface:**

Handle shanks made of glass ball reinforced polyamide PA 6, black, similar to RAL 9005, semi-matte with a fine-grain structure.  
Threaded bushes made of brass.  
Handle ledge made of extruded aluminium AlMgSi 0.5; glass ball blasted and anodized in natural colour.  
Illuminatable plastic insert made of translucent PMMA.

**Function elements:**

One push button, as a change-over contact.

**Connection:**

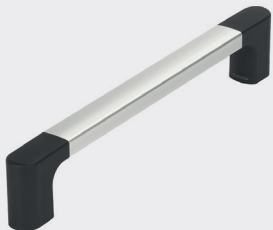
5 m connection cable leading out of the mounting surface of the handle shank.  
Version with an 8-pole connector on request.

**Protection class:**

IP 65.

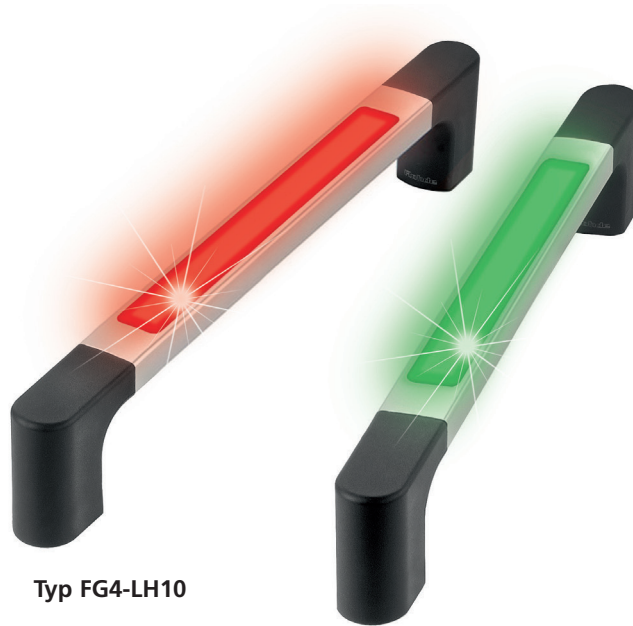
**Note:**

Other handle lengths and switching element assignments, as well as white handle ledge lighting on request.



**MS-02**

Counter-handle without any electrical function elements, see page 33.



Typ FG4-LH10

**Connection**



Typ FG4-LH11

**Typ**

**FG4-LH10**

without push button, with LED-illumination

**FG4-LH11**

with push button and with LED-illumination

A\*

L

Order no.

Order no.

375

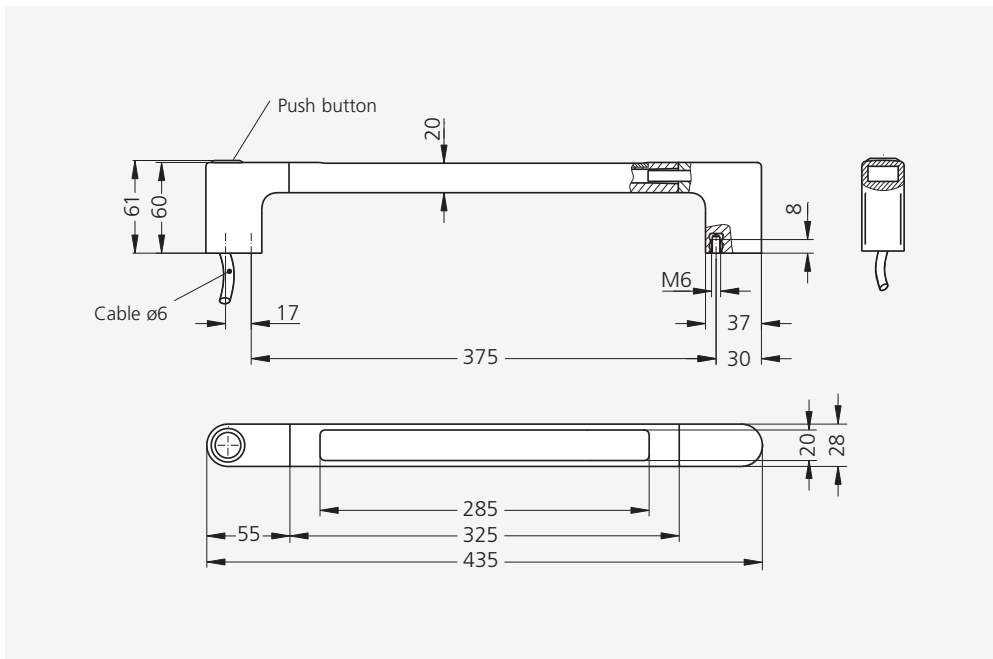
435

FG4-LH10.375.11

FG4-LH11.375.11

\* Other handle lengths on request




**Technical data**

	<b>FG4-LH10</b>	<b>FG4-LH11</b>
<b>Typ</b>	without push button	with push button
<b>Push button</b> (1 change-over contact)	without	
<b>LED board</b>		
<b>Push button</b>	-	24 V AC/DC max. 1 A
<b>Operating voltage LED</b>	24 V DC (12 V DC optional)	
<b>Connection type</b>	cable 8-pole	
<b>Mounting cutout</b>		

All dimensions in mm.