



Chipsmall Limited consists of a professional team with an average of over 10 year of expertise in the distribution of electronic components. Based in Hongkong, we have already established firm and mutual-benefit business relationships with customers from,Europe,America and south Asia,supplying obsolete and hard-to-find components to meet their specific needs.

With the principle of "Quality Parts,Customers Priority,Honest Operation,and Considerate Service",our business mainly focus on the distribution of electronic components. Line cards we deal with include Microchip,ALPS,ROHM,Xilinx,Pulse,ON,Everlight and Freescale. Main products comprise IC,Modules,Potentiometer,IC Socket,Relay,Connector.Our parts cover such applications as commercial,industrial, and automotives areas.

We are looking forward to setting up business relationship with you and hope to provide you with the best service and solution. Let us make a better world for our industry!



## Contact us

Tel: +86-755-8981 8866 Fax: +86-755-8427 6832

Email & Skype: info@chipsmall.com Web: www.chipsmall.com

Address: A1208, Overseas Decoration Building, #122 Zhenhua RD., Futian, Shenzhen, China





### Handle series FG4-P

Handles with switching function for pneumatic purposes.

#### Material and surface:

Handle shanks of polyamide PA 6, glass ball reinforced, black, similar to RAL 9005, half-matt with fine structure. Connecting ledge of profiled aluminium AlMgSi 0.5; natural coloured anodized.

#### Version:

Manually operated push button with 3/2 or 5/2 solenoid valve with return spring for filtered or oiled compressed air.

#### Compressed air connection:

Straight or angled adaptor,  $\varnothing$  4 mm with o-ring.

#### Note:

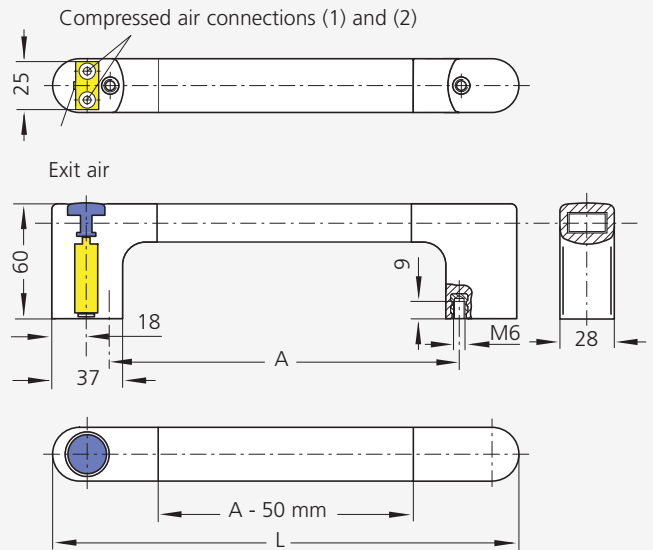
Other handle lengths on request. Handle versions without functions see page 33.



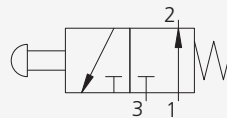
product design award

2006

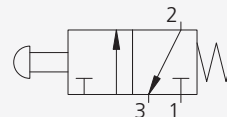
### 3/2-Wegeventil / solenoid valve Typ FG4-P3



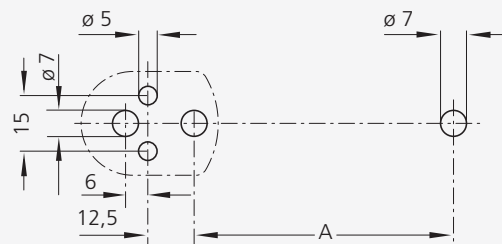
#### Version A Normally opened



#### Version B Normally closed



#### Mounting cutout



### Handles with 3/2-solenoid valve

	Version A	Version B
A*	L	Order no.
300	360	FG4-P3.A300.11
		Order no.
		FG4-P3.B300.11

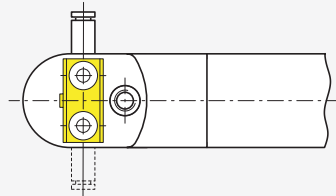
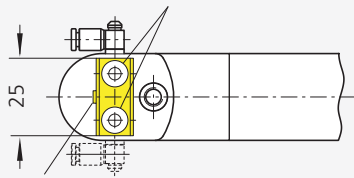
\*Other handle lengths on request

### 5/2-Solenoid valve

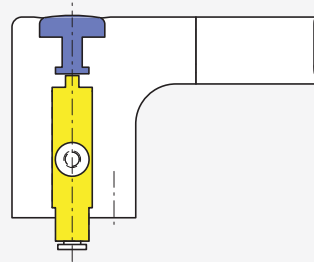
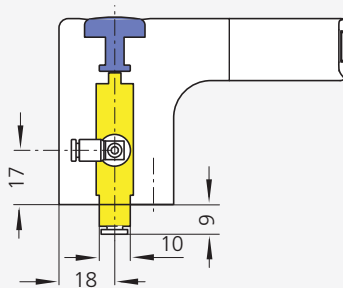
**Typ FG4-P5.W**  
with angled adaptor

**Typ FG4-P5.G**  
with straight adaptor

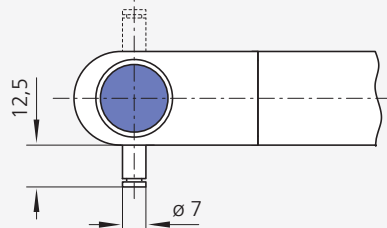
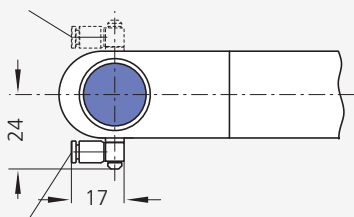
Compressed air connections (2) and (4)



Exit air

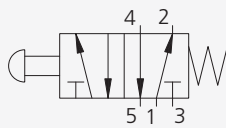


Compressed air connection (1) right

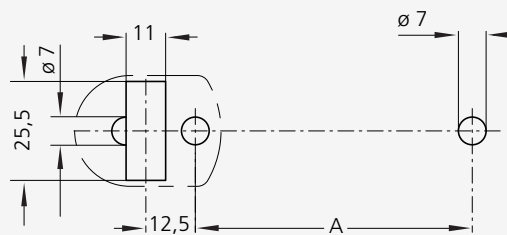


Compressed air connection (1) left

5/2-Solenoid valve



**Mounting cutout**



### Handles with 5/2-solenoid valve

A*	L		Order no.
300	360	with angled adaptor left	FG4-P5.WL300.11
		with straight adaptor left	FG4-P5.GL300.11
		with angled adaptor right	FG4-P5.WR300.11
		with straight adaptor right	FG4-P5.GR300.11

\*Other handle lengths on request

All dimensions in mm.



Typ FG4-P5.WL



Typ FG4-P5.GL