



Chipsmall Limited consists of a professional team with an average of over 10 year of expertise in the distribution of electronic components. Based in Hongkong, we have already established firm and mutual-benefit business relationships with customers from,Europe,America and south Asia,supplying obsolete and hard-to-find components to meet their specific needs.

With the principle of “Quality Parts,Customers Priority,Honest Operation,and Considerate Service”,our business mainly focus on the distribution of electronic components. Line cards we deal with include Microchip,ALPS,ROHM,Xilinx,Pulse,ON,Everlight and Freescale. Main products comprise IC,Modules,Potentiometer,IC Socket,Relay,Connector.Our parts cover such applications as commercial,industrial, and automotives areas.

We are looking forward to setting up business relationship with you and hope to provide you with the best service and solution. Let us make a better world for our industry!



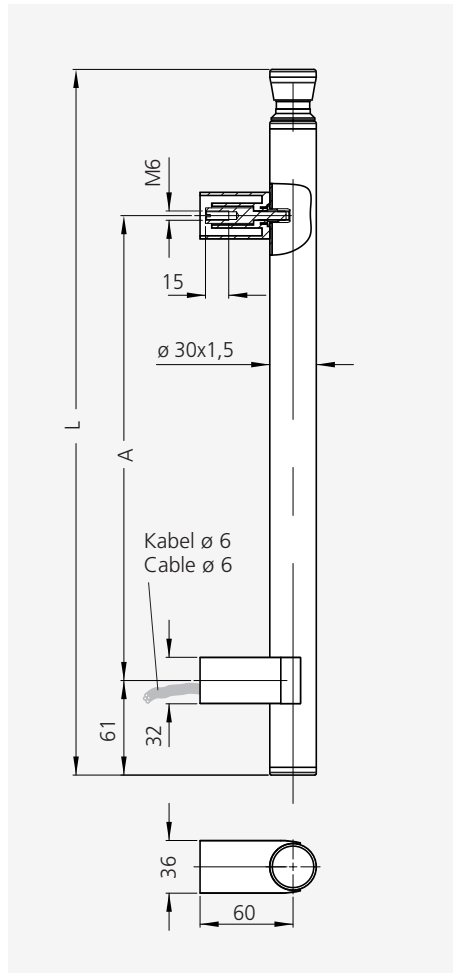
Contact us

Tel: +86-755-8981 8866 Fax: +86-755-8427 6832

Email & Skype: info@chipsmall.com Web: www.chipsmall.com

Address: A1208, Overseas Decoration Building, #122 Zhenhua RD., Futian, Shenzhen, China





Handle series FG6

Material and surface:
Tube $\varnothing 30 \times 1.5$ mm made of stainless steel, material no. 1.4301; fine ground or aluminium black powder coated. Tube holder and cap made of polyamide PA 6, black with fine structure.

Function element:
Emergency stop with 2 NC and 1 NO contacts.

Connecting:
Connecting cable 5 m lead out of the tube holder.

Protection class:
IP 65

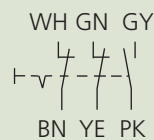
Note:
Any other handle lengths and surfaces available on request.

A*	L	Order no.	Order no.
300	455	FG6-20.300.37	FG6-20.300.54

* Other handle lengths on request

Technical data

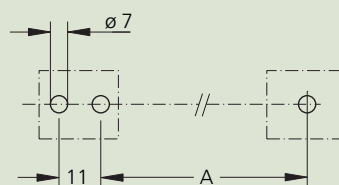
Emergency stop
(2 NC + 1 NO contacts)



Switching voltage

24 V DC
10 mA

Mounting cutout



Door solenoid tumbler see page 304–305.