



Chipsmall Limited consists of a professional team with an average of over 10 year of expertise in the distribution of electronic components. Based in Hongkong, we have already established firm and mutual-benefit business relationships with customers from,Europe,America and south Asia,supplying obsolete and hard-to-find components to meet their specific needs.

With the principle of “Quality Parts,Customers Priority,Honest Operation,and Considerate Service”,our business mainly focus on the distribution of electronic components. Line cards we deal with include Microchip,ALPS,ROHM,Xilinx,Pulse,ON,Everlight and Freescale. Main products comprise IC,Modules,Potentiometer,IC Socket,Relay,Connector.Our parts cover such applications as commercial,industrial, and automotives areas.

We are looking forward to setting up business relationship with you and hope to provide you with the best service and solution. Let us make a better world for our industry!



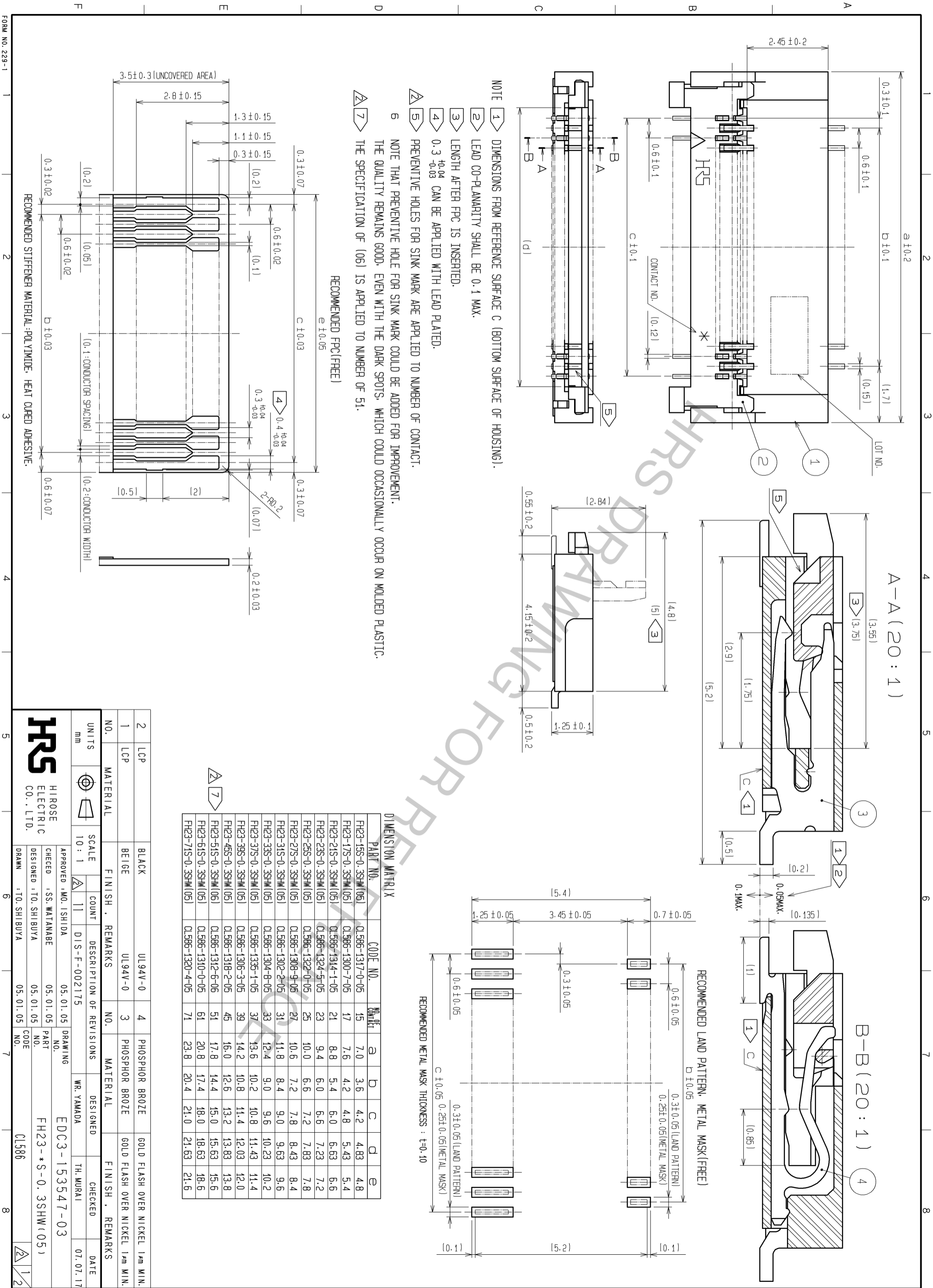
Contact us

Tel: +86-755-8981 8866 Fax: +86-755-8427 6832

Email & Skype: info@chipsmall.com Web: www.chipsmall.com

Address: A1208, Overseas Decoration Building, #122 Zhenhua RD., Futian, Shenzhen, China





NOTE

- 1 DIMENSIONS FROM REFERENCE SURFACE C (BOTTOM SURFACE OF HOUSING).
- 2 LEAD CO-PLANARITY SHALL BE 0.1 MAX.
- 3 LENGTH AFTER FPC IS INSERTED.
- 4 $0.3^{+0.04}_{-0.03}$ CAN BE APPLIED WITH LEAD PLATED.
- 5 PREVENTIVE HOLES FOR SINK MARK ARE APPLIED TO NUMBER OF CONTACT.
- 6 NOTE THAT PREVENTIVE HOLE FOR SINK MARK COULD BE ADDED FOR IMPROVEMENT. THE QUALITY REMAINS GOOD, EVEN WITH THE DARK SPOTS, WHICH COULD OCCASIONALLY OCCUR ON MOLDED PLASTIC.
- 7 THE SPECIFICATION OF (06) IS APPLIED TO NUMBER OF 51.

RECOMMENDED FPC(FREE)
 $e \pm 0.05$

RECOMMENDED METAL MASK THICKNESS : $t \pm 0.10$

DIMENSION MATRIX

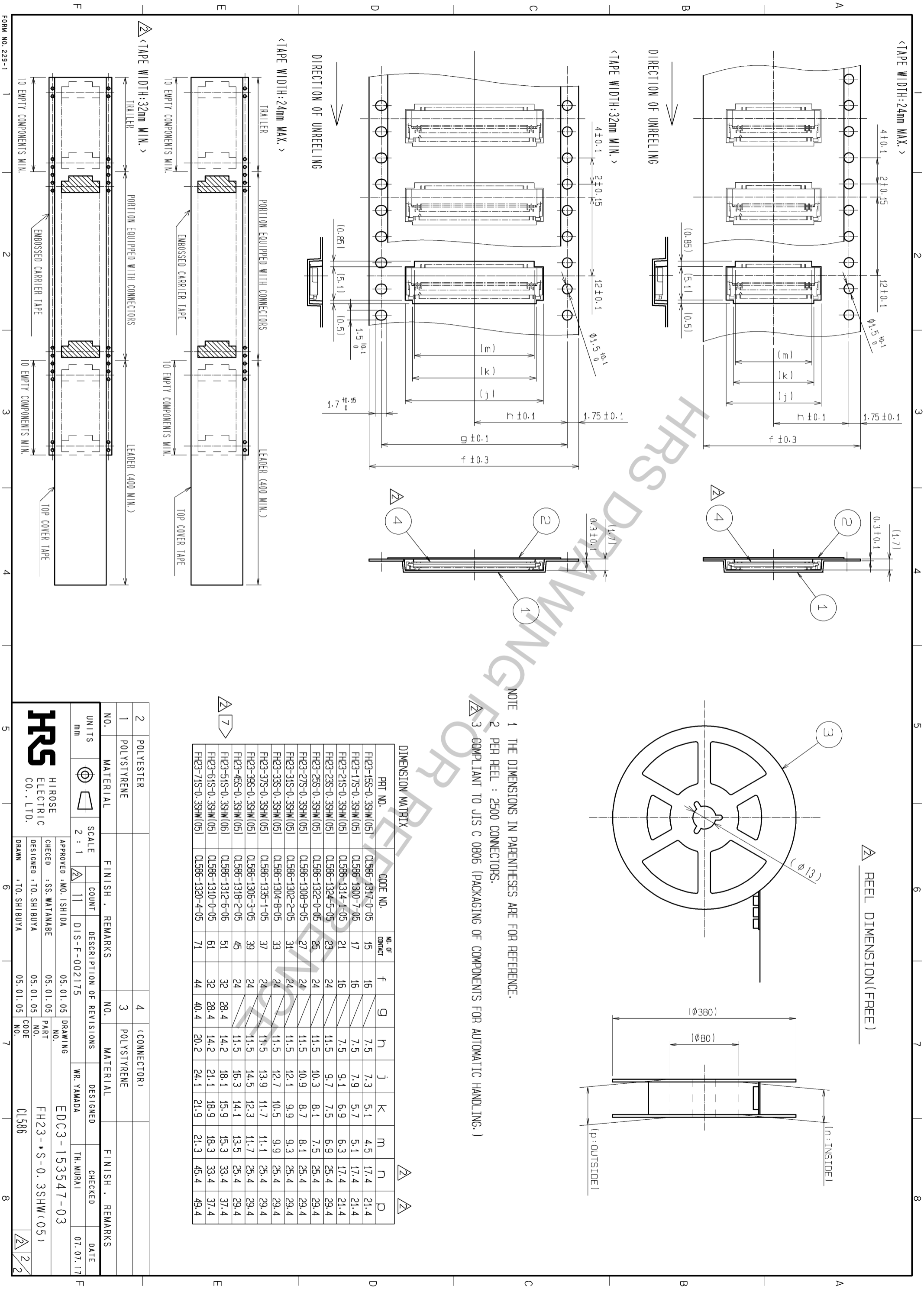
PART NO.	CODE NO.	NO. OF	a	b	c	d	e
FH23-15S-0.3SHW(05)	CL586-1317-0-05	15	7.0	3.6	4.2	4.83	4.8
FH23-17S-0.3SHW(05)	CL586-1300-7-05	17	7.6	4.2	4.8	5.43	5.4
FH23-21S-0.3SHW(05)	CL586-1314-1-05	21	8.8	5.4	6.0	6.63	6.6
FH23-23S-0.3SHW(05)	CL586-1324-5-05	23	9.4	6.0	6.6	7.23	7.2
FH23-25S-0.3SHW(05)	CL586-1322-0-05	25	10.0	6.6	7.2	7.83	7.8
FH23-27S-0.3SHW(05)	CL586-1308-9-05	27	10.6	7.2	7.8	8.43	8.4
FH23-31S-0.3SHW(05)	CL586-1302-2-05	31	11.8	8.4	9.0	9.63	9.6
FH23-33S-0.3SHW(05)	CL586-1304-8-05	33	12.4	9.0	9.6	10.23	10.2
FH23-37S-0.3SHW(05)	CL586-1335-1-05	37	13.6	10.2	10.8	11.43	11.4
FH23-39S-0.3SHW(05)	CL586-1306-3-05	39	14.2	10.8	11.4	12.03	12.0
FH23-45S-0.3SHW(05)	CL586-1318-2-05	45	16.0	12.6	13.2	13.83	13.8
FH23-51S-0.3SHW(05)	CL586-1312-6-05	51	17.8	14.4	15.0	15.63	15.6
FH23-61S-0.3SHW(05)	CL586-1310-0-05	61	20.8	17.4	18.0	18.63	18.6
FH23-71S-0.3SHW(05)	CL586-1320-4-05	71	23.8	20.4	21.0	21.63	21.6

RECOMMENDED STIFFENER MATERIAL: POLYIMIDE. HEAT CURED ADHESIVE.

2	LCP	BLACK	UL94V-0	4	PHOSPHOR BROZE	GOLD FLASH OVER NICKEL 1um MIN.
1	LCP	BEIGE	UL94V-0	3	PHOSPHOR BROZE	GOLD FLASH OVER NICKEL 1um MIN.

UNITS	SCALE	COUNT	DESCRIPTION OF REVISIONS	DESIGNED	CHECKED	DATE
mm	10:1	11	DIS-F-002175	WR. YAMADA	TH. MURAI	07.07.17

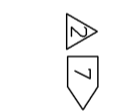
APPROVED: MO. ISHIDA	05.01.05	DRAWING NO.	EDC3-153547-03
CHECKED: SS. WATANABE	05.01.05	PART NO.	FH23-*S-0.3SHW(05)
DESIGNED: TO. SHIBUYA	05.01.05	CODE NO.	CL586
DRAWN: TO. SHIBUYA	05.01.05		



NOTE 1 THE DIMENSIONS IN PARENTHESES ARE FOR REFERENCE.
 2 PER REEL : 2500 CONNECTORS.
 3 COMPLIANT TO JIS C 0806 (PACKAGING OF COMPONENTS FOR AUTOMATIC HANDLING.)

DIMENSION MATRIX

PRT NO.	CODE NO.	NO. OF CONTACT	f	g	h	j	k	m	n	p
FH23-15S-0-.3SHW(05)	Q1.586-1317-0-05	15	16	/	7.5	7.3	5.1	4.5	17.4	21.4
FH23-17S-0-.3SHW(05)	Q1.586-1300-7-05	17	16	/	7.5	7.9	5.7	5.1	17.4	21.4
FH23-21S-0-.3SHW(05)	Q1.586-1314-1-05	21	16	/	7.5	9.1	6.9	6.3	17.4	21.4
FH23-23S-0-.3SHW(05)	Q1.586-1324-5-05	23	24	/	11.5	9.7	7.5	6.9	25.4	29.4
FH23-25S-0-.3SHW(05)	Q1.586-1322-0-05	25	24	/	11.5	10.3	8.1	7.5	25.4	29.4
FH23-27S-0-.3SHW(05)	Q1.586-1308-9-05	27	24	/	11.5	10.9	8.7	8.1	25.4	29.4
FH23-31S-0-.3SHW(05)	Q1.586-1302-2-05	31	24	/	11.5	12.1	9.9	9.3	25.4	29.4
FH23-33S-0-.3SHW(05)	Q1.586-1304-8-05	33	24	/	11.5	12.7	10.5	9.9	25.4	29.4
FH23-37S-0-.3SHW(05)	Q1.586-1335-1-05	37	24	/	11.5	13.9	11.7	11.1	25.4	29.4
FH23-39S-0-.3SHW(05)	Q1.586-1306-3-05	39	24	/	11.5	14.5	12.3	11.7	25.4	29.4
FH23-45S-0-.3SHW(05)	Q1.586-1318-2-05	45	24	/	11.5	16.3	14.1	13.5	25.4	29.4
FH23-51S-0-.3SHW(05)	Q1.586-1312-6-06	51	32	28.4	14.2	18.1	15.9	15.3	33.4	37.4
FH23-61S-0-.3SHW(05)	Q1.586-1310-0-05	61	32	28.4	14.2	21.1	18.9	18.3	33.4	37.4
FH23-71S-0-.3SHW(05)	Q1.586-1320-4-05	71	44	40.4	20.2	24.1	21.9	21.3	45.4	49.4



NO.	MATERIAL	FINISH	REMARKS	NO.	MATERIAL	FINISH	REMARKS
1	POLYESTER			3	POLYSTYRENE		
2	POLYSTYRENE			4	(CONNECTOR)		

HRS HIROSE ELECTRIC CO., LTD.

APPROVED: MO. ISHIDA
 CHECKED: SS. WATANABE
 DESIGNED: TO. SHIBUYA
 DRAWN: TO. SHIBUYA

SCALE: 2:1
 DIS-F-002175

EDC3-153547-03
 FH23-*S-0.3SHW(05)

DATE: 07.07.17