



Chipsmall Limited consists of a professional team with an average of over 10 year of expertise in the distribution of electronic components. Based in Hongkong, we have already established firm and mutual-benefit business relationships with customers from,Europe,America and south Asia,supplying obsolete and hard-to-find components to meet their specific needs.

With the principle of “Quality Parts,Customers Priority,Honest Operation,and Considerate Service”,our business mainly focus on the distribution of electronic components. Line cards we deal with include Microchip,ALPS,ROHM,Xilinx,Pulse,ON,Everlight and Freescale. Main products comprise IC,Modules,Potentiometer,IC Socket,Relay,Connector.Our parts cover such applications as commercial,industrial, and automotives areas.

We are looking forward to setting up business relationship with you and hope to provide you with the best service and solution. Let us make a better world for our industry!



Contact us

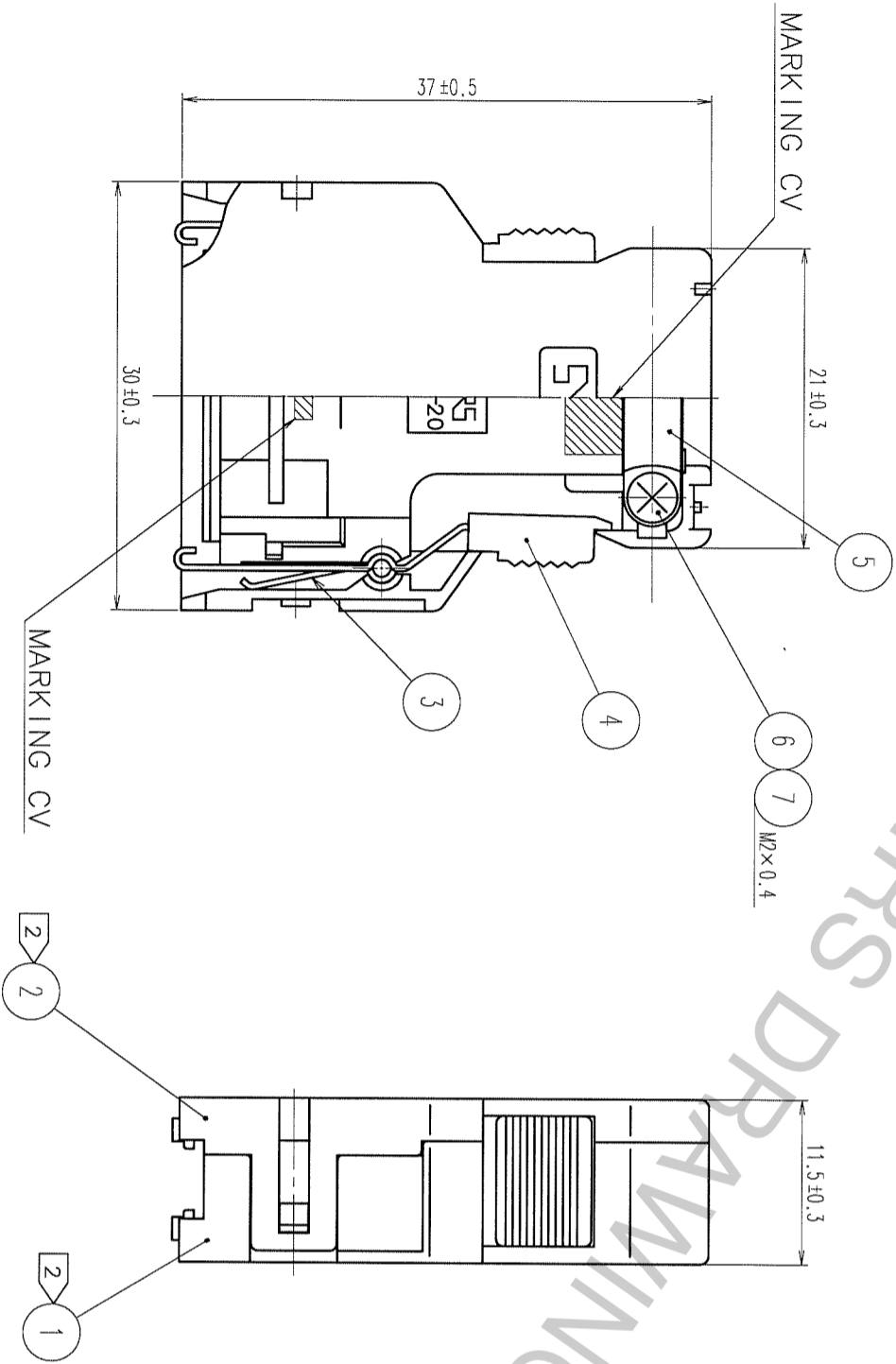
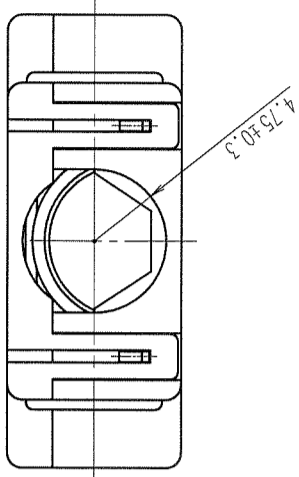
Tel: +86-755-8981 8866 Fax: +86-755-8427 6832

Email & Skype: info@chipsmall.com Web: www.chipsmall.com

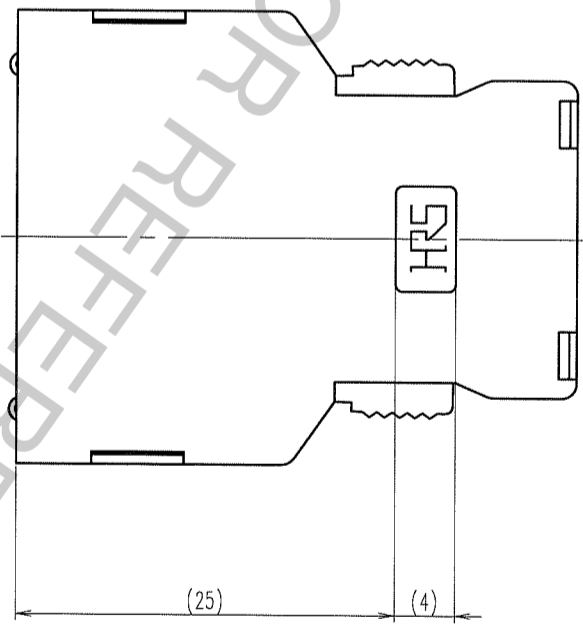
Address: A1208, Overseas Decoration Building, #122 Zhenhua RD., Futian, Shenzhen, China



TO	Q1



- NOTE 1 THE OUT SIDE OF CASE SHALL BE MATTE FINISH WITH TH-117 ON EQUIVALENT, TANAZAWA HAKKOSHA CO., LTD.
 EXCEPT AROUND THE DITCH OF HR5 MARK.
 2 COMPONENTS OF REF ① AND ② ARE DELIVERED DISASSEMBLED
 3 THE DIMENSIONS IN PARENTHESIS ARE FOR REFERENCE.
 4 APPLICABLE CABLE WIRE DIAMETER SHALL BE $\phi 8.5 \pm 0.5$.



COUNT	DESCRIPTION OF REVISIONS	BY	CHKD	DATE	COUNT	DESCRIPTION OF REVISIONS	BY	CHKD	DATE
△				..	△				..
△				..	△				..
△				..	△				..

4	POLYCARBONATE (GRAY)	UL94V-0							
3	STAINLESS STEEL		7	BRASS				NICKEL PLATED	
2	POLYCARBONATE (GRAY)	UL94V-0	6	BRASS				NICKEL PLATED	
1	POLYCARBONATE (GRAY)	UL94V-0	5	STAINLESS STEEL					
NO.	MATERIAL	FINISH, REMARKS	NO.	MATERIAL	FINISH, REMARKS				

CODE NO. (OLD)		DRAWN	DESIGNED	CHECKED	APPROVED	RELEASED
		<i>Y. Sato</i>	<i>T. Sato</i>	<i>Y. Sato</i>	<i>T. Sato</i>	
		05.10.13	05.10.13	05.10.13	05.10.13	

SCALE	2 : 1	DRAWING NO.	EDC3-040857-01	PART NO.	F1-20-CV(60)
UNITS	mm	CODE NO.	CL230-0501-4-60		
		HR5	HIROSE ELECTRIC CO., LTD		

HR5 DRAWING FOR REFERENCE

1 2 3 4 5 6 7 8

TO	Q1

1/1