



Chipsmall Limited consists of a professional team with an average of over 10 year of expertise in the distribution of electronic components. Based in Hongkong, we have already established firm and mutual-benefit business relationships with customers from,Europe,America and south Asia,supplying obsolete and hard-to-find components to meet their specific needs.

With the principle of "Quality Parts,Customers Priority,Honest Operation,and Considerate Service",our business mainly focus on the distribution of electronic components. Line cards we deal with include Microchip,ALPS,ROHM,Xilinx,Pulse,ON,Everlight and Freescale. Main products comprise IC,Modules,Potentiometer,IC Socket,Relay,Connector.Our parts cover such applications as commercial,industrial, and automotives areas.

We are looking forward to setting up business relationship with you and hope to provide you with the best service and solution. Let us make a better world for our industry!



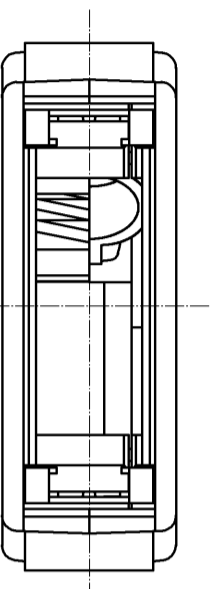
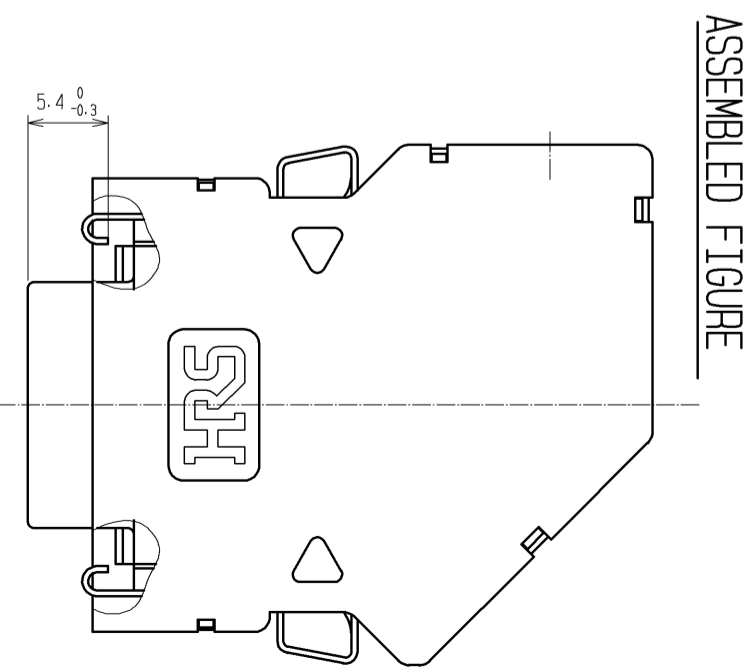
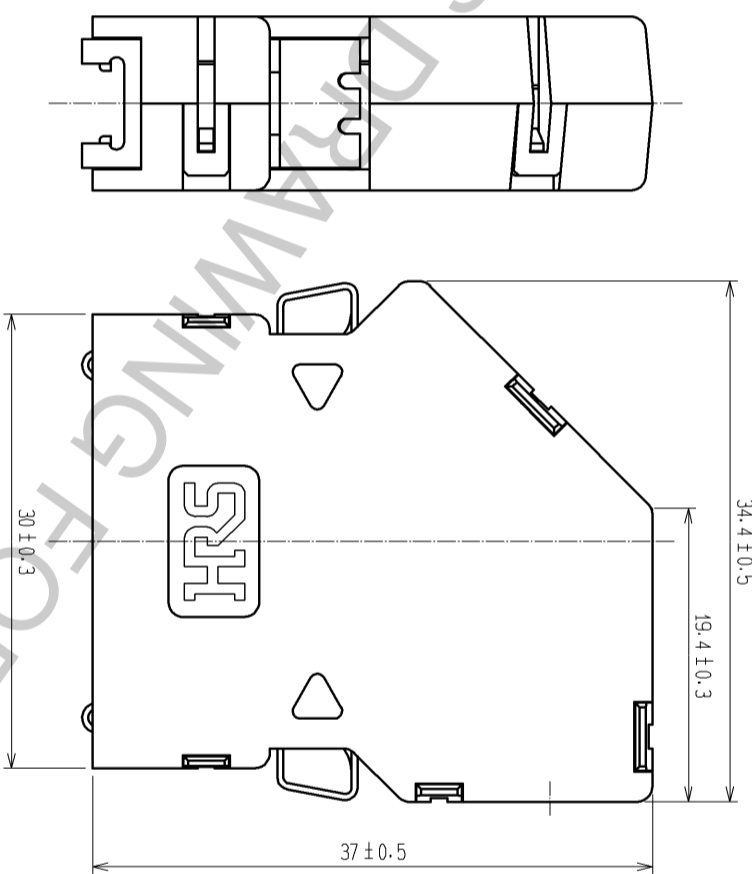
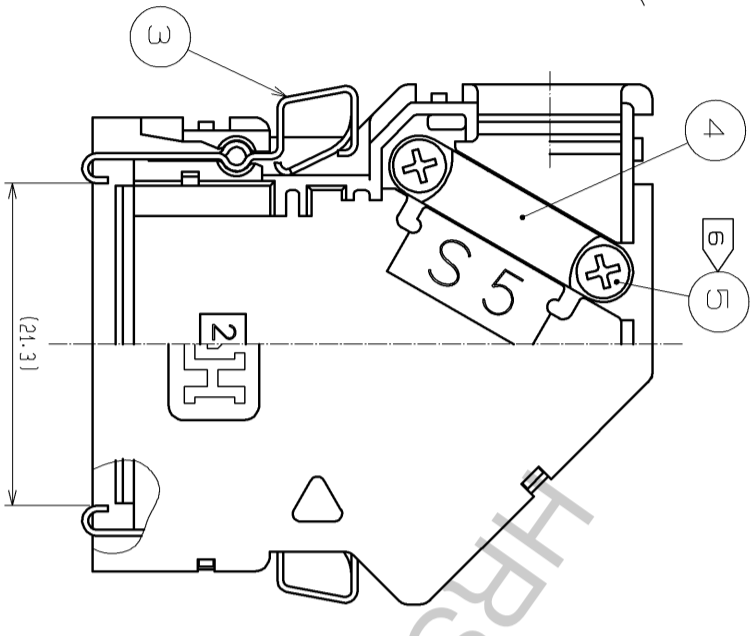
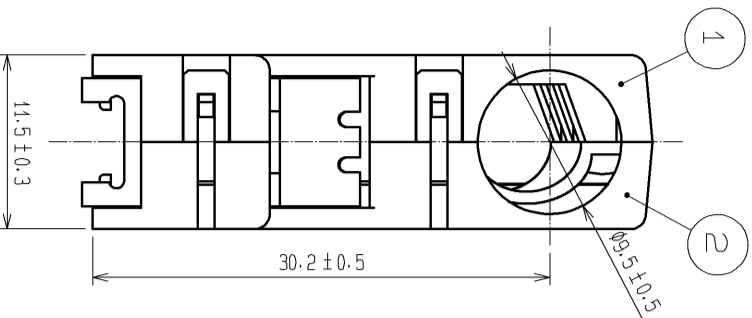
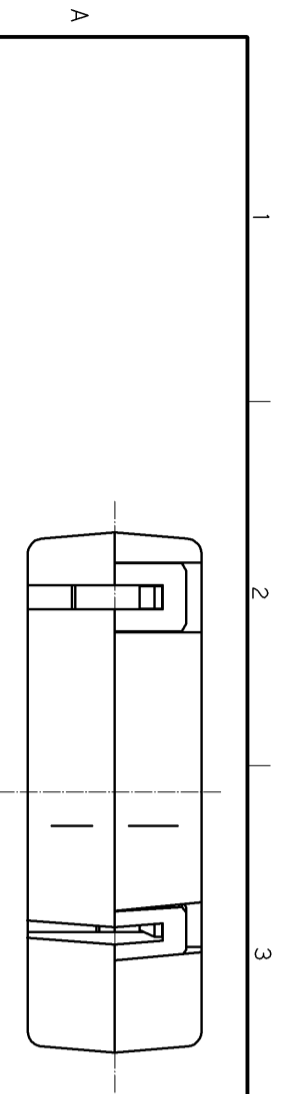
Contact us

Tel: +86-755-8981 8866 Fax: +86-755-8427 6832

Email & Skype: info@chipsmall.com Web: www.chipsmall.com

Address: A1208, Overseas Decoration Building, #122 Zhenhua RD., Futian, Shenzhen, China

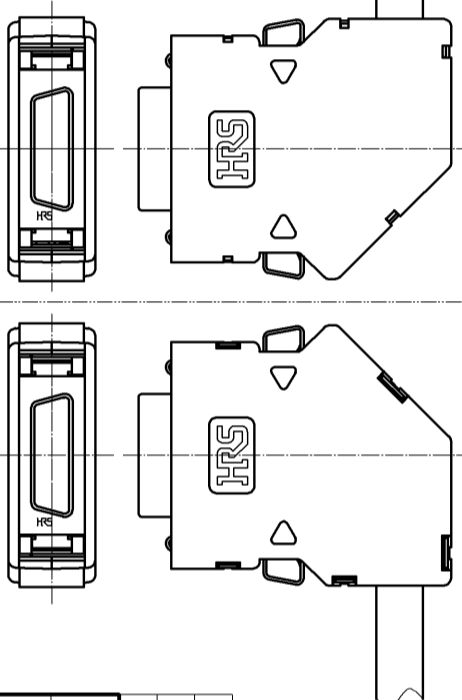




5 THE FIGURE OF CABLE EXIT DIRECTION(FREE)

TYPE 1

TYPE 2



- NOTE
- 1 PART NO. ③ IS ASSEMBLED INTO PART NO. ①.
 - 2 PART NO. ② ④ AND ⑤ ARE NOT ASSEMBLED WHEN DELIVERED.
 - 3 OUTER DIAMETER OF APPLICABLE CABLE IS φ9.2 ± 0.3.
 - 4 DIMENSIONS IN PARENTHESES ARE SHOWN AS REFERENCES.
 - 5 THIS PRODUCT IS THE COVER CASE FOR FI408-20S(CI230-0518-7).
 - 6 CABLE EXIT DIRECTION DEPENDS ON THE WAY CONNECTOR UNIT IS ASSEMBLED.
 - 7 TAPPING SCREW TIGHTENING SHALL BE 0.22N·m.

NO.	MATERIAL	FINISH	REMARKS	NO.	MATERIAL	FINISH	REMARKS
2	PC	(GRAY)	UL94V-0	5	STEEL		SURFACE AREA :NICKEL PLATING 2μm min UNDER AREA :COPPER PLATING 1μm min
1	PC	(GRAY)	UL94V-0	4	STAINLESS STEEL		
				3	STAINLESS STEEL		

UNITS	SCALE	COUNT	DESCRIPTION OF REVISIONS	DESIGNED	CHECKED	DATE
mm	2 : 1					
APPROVED	YH. ENAMI			10.02.26		10.02.26
CHECKED	HO. MIWA			10.02.26		10.02.26
DESIGNED	YH. MAMADA			10.02.25		10.02.25
DRAWN	YH. MAMADA			10.02.25		10.02.25

EDC3-122397-01	DRAWING NO.
FI-20-CV55(50)	PART NO.
CL230-0532-8-50	CODE NO.