



Chipsmall Limited consists of a professional team with an average of over 10 year of expertise in the distribution of electronic components. Based in Hongkong, we have already established firm and mutual-benefit business relationships with customers from,Europe,America and south Asia,supplying obsolete and hard-to-find components to meet their specific needs.

With the principle of “Quality Parts,Customers Priority,Honest Operation,and Considerate Service”,our business mainly focus on the distribution of electronic components. Line cards we deal with include Microchip,ALPS,ROHM,Xilinx,Pulse,ON,Everlight and Freescale. Main products comprise IC,Modules,Potentiometer,IC Socket,Relay,Connector.Our parts cover such applications as commercial,industrial, and automotives areas.

We are looking forward to setting up business relationship with you and hope to provide you with the best service and solution. Let us make a better world for our industry!



Contact us

Tel: +86-755-8981 8866 Fax: +86-755-8427 6832

Email & Skype: info@chipsmall.com Web: www.chipsmall.com

Address: A1208, Overseas Decoration Building, #122 Zhenhua RD., Futian, Shenzhen, China





12mm (0.47") Linear bearings (2 pcs) SKU:FIT0237



INTRODUCTION

These are 12mm (0.47") linear bearings. They will fit on a 12mm (0.47") rod.

SPECIFICATION

- Type: LM12LUU
- Inner diameter: 12mm (0.47")
- Outer diameter: 21mm (0.83")
- Length: 57mm (2.24")

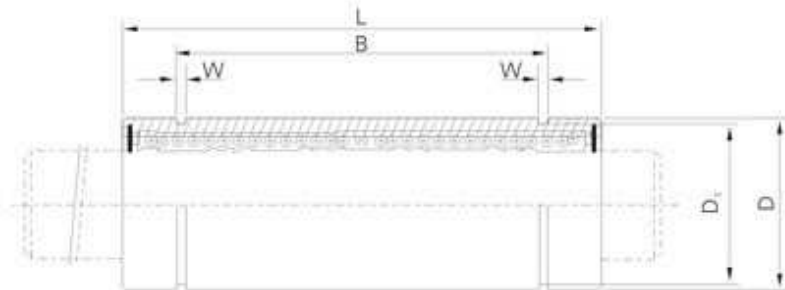
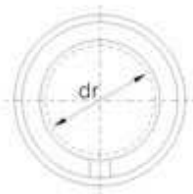
SHIPPING LIST

- 12mm (0.47") Linear bearings x2

直线轴承系列
Linear bearing series
LM...LUU



加长型
Long type



SIUNIT: 1N≈0.102kgf Unit:mm
国际单位: 1N≈0.102kgf 单位: mm

LM...L系列 LM...L Series		球列数 Number of ball rows	dr (mm)	主要尺寸 Main Dimensions(mm)							重量 Weight (gf)	基本承载率 Basic Loading Rate		
型号 Type	公差 Tolerance (μm)			D	公差 Tolerance (μm)	L	公差 Tolerance (μm)	B	公差 Tolerance (μm)	W		D ₁	额定动负荷 Nominal Dynamic Load C(N)	额定静负荷 Nominal Static Load C ₀ (N)
LM6LUU	4	6	0 -10	12	0	35	0 -0.3	27	0 -0.3	1.1	11.5	16	324	529
LM8LUU	4	8		15	-13	45		35		1.1	14.3	31	413	784
LM10LUU	4	10		19	0 -16	55		44		1.3	18	62	588	1100
LM12LUU	4	12		21		57		46		1.3	20	80	657	1200
LM13LUU	4	13		23		61		46		1.3	22	90	814	1570
LM16LUU	5	16		28		70		53		1.6	27	145	1230	2350
LM20LUU	5	20	0 -12	32	0 -19	80	0 -0.4	61	0 -0.4	1.6	30.5	180	1400	2750
LM25LUU	5	25		40		112		82		1.85	38	440	1560	3140
LM30LUU	6	30		45		123		89		1.85	43	580	2490	5490
LM35LUU	6	35	0 -15	52	0 -22	135	0 -0.4	99	0 -0.4	2.1	49	795	2650	6470
LM40LUU	6	40		60		154		121		2.1	57	1170	3430	8040
LM50LUU	6	50		80		192		148		2.6	76.5	3100	6080	15900
LM60LUU	6	60		90		211		170		3.15	86.5	3500	7650	20000

注: dr表示内径 (Inscribed circle diameter)
D表示外径 (Outer diameter)
L表示长度 (Length)
可选择镀镍型