



Chipsmall Limited consists of a professional team with an average of over 10 year of expertise in the distribution of electronic components. Based in Hongkong, we have already established firm and mutual-benefit business relationships with customers from,Europe,America and south Asia,supplying obsolete and hard-to-find components to meet their specific needs.

With the principle of “Quality Parts,Customers Priority,Honest Operation,and Considerate Service”,our business mainly focus on the distribution of electronic components. Line cards we deal with include Microchip,ALPS,ROHM,Xilinx,Pulse,ON,Everlight and Freescale. Main products comprise IC,Modules,Potentiometer,IC Socket,Relay,Connector.Our parts cover such applications as commercial,industrial, and automotives areas.

We are looking forward to setting up business relationship with you and hope to provide you with the best service and solution. Let us make a better world for our industry!



Contact us

Tel: +86-755-8981 8866 Fax: +86-755-8427 6832

Email & Skype: info@chipsmall.com Web: www.chipsmall.com

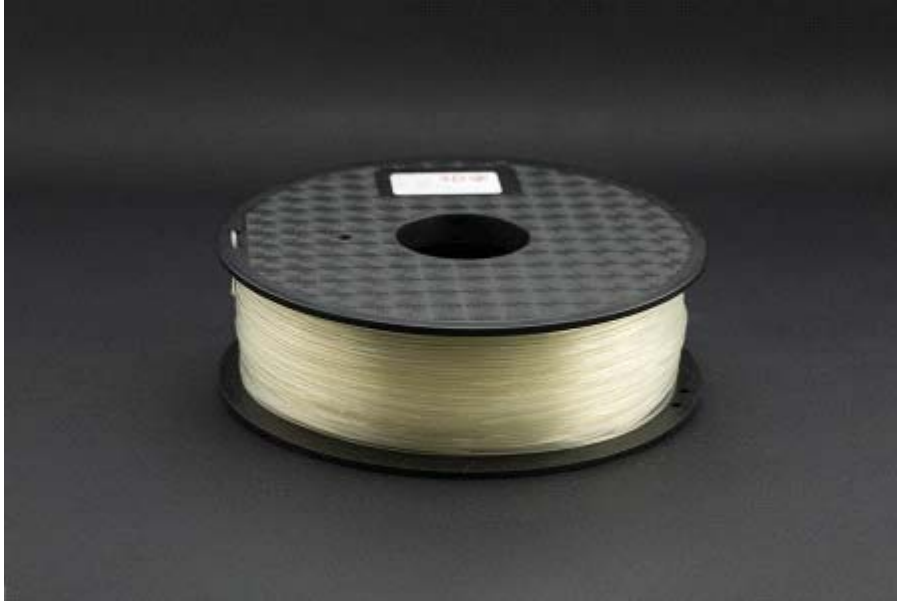
Address: A1208, Overseas Decoration Building, #122 Zhenhua RD., Futian, Shenzhen, China





1.75mm PLA (1kg) - Natural Color

SKU: FIT0292-NL



INTRODUCTION

This is 1.75mm(0.07") PLA filament which is commonly used by rebrap, Makerbot, Mendel, Huxley UP! Printer, WeisTek and Thing-o-matic 3D printers. It comes with one spool that can be easily attached on 3D printer.

PLA is a wonderful filament. It is the most environmentally friendly material available for this type of 3D printing, and it comes in a wide range of colors.

Polylactic acid or polylactide (PLA) is a thermoplastic aliphatic polyester derived from renewable resources, such as corn starch ,tapioca roots, chips or starch, or sugarcane. It can biodegrade under certain conditions.

As the extrusion head temperature will vary from 3D printer to 3D printer design, temperature differences will affect the result of your print, we suggest PLA use an optimal temperature range of 215°C to 225°C. Please make the appropriate adjustments to temperature before you print with PLA, some testing might be required to find your optimal print settings.

SPECIFICATION

- Diameters: 1.75mm(0.07")
- Weight:1kg
- PLA Parameter
- Physical Property Typical value
- Tensile Strength@Yield 46Mpa
- Tensile Elongation@Break 20%
- Flexural Strength 70Mpa
- Flexural Modulus 3212Mpa
- Notched Izod Impact(23°C) 5.2kj/m²
- HDT@66psi 58°C
- density 1.31g/cm³
- MFR 10-14g/10min
- Accuracy 1.75±0.1mm (0.07"±0.004")