



Chipsmall Limited consists of a professional team with an average of over 10 year of expertise in the distribution of electronic components. Based in Hongkong, we have already established firm and mutual-benefit business relationships with customers from,Europe,America and south Asia,supplying obsolete and hard-to-find components to meet their specific needs.

With the principle of “Quality Parts,Customers Priority,Honest Operation,and Considerate Service”,our business mainly focus on the distribution of electronic components. Line cards we deal with include Microchip,ALPS,ROHM,Xilinx,Pulse,ON,Everlight and Freescale. Main products comprise IC,Modules,Potentiometer,IC Socket,Relay,Connector.Our parts cover such applications as commercial,industrial, and automotives areas.

We are looking forward to setting up business relationship with you and hope to provide you with the best service and solution. Let us make a better world for our industry!



Contact us

Tel: +86-755-8981 8866 Fax: +86-755-8427 6832

Email & Skype: info@chipsmall.com Web: www.chipsmall.com

Address: A1208, Overseas Decoration Building, #122 Zhenhua RD., Futian, Shenzhen, China





DFROBOT
DRIVE THE FUTURE



Machine Friction Disc Lock Washer Torque Limiter Coupling

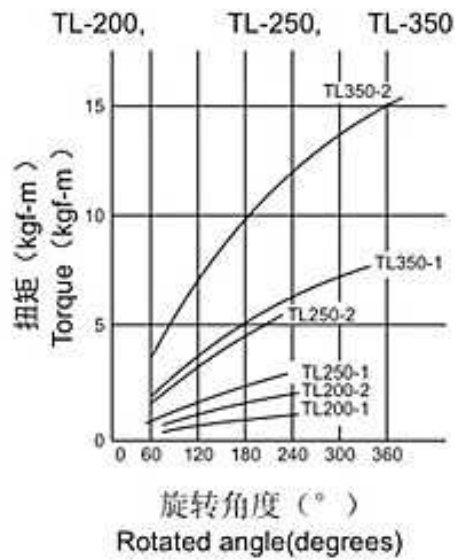
SKU:FIT0589

INTRODUCTION

Torque limiter is a protective device that limits the torque transmitted in a drive system by slipping when the torque demand exceeds a preset value as a result of shock loads, overloads, or machine jams. It automatically re-engages when the overload is removed.

This model TL350-2 uses a spring-loaded friction surface to adjust the spring force with a nut or bolt to preset the sliding torque. It can be used as a center member with a sprocket, a gear sheave or a flange plate, sandwiched between the friction surfaces.

◇ 旋转角度与预设扭力 rotated angle and setting torque

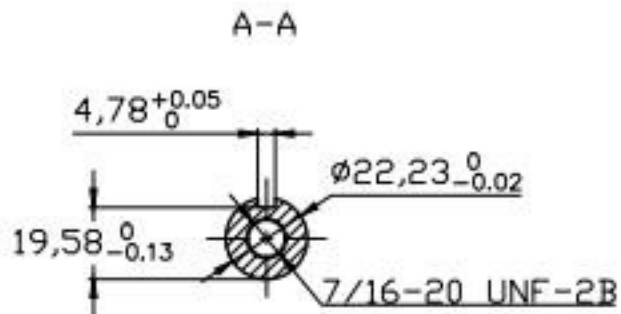


◇ TL200~TL700

Dimensions and Capacity for -TL200~TL700

尺寸: (mm)
Dimensions in mm

型号 Model	扭矩范围 Torque Range (Nm)	最高转速 Max.speed unbalanced rpm	成品内孔 Pilot Bore	最大孔径 Max. Bore	衬环长度 Bushing Length	衬环外径 O.D. of Bushing	中心元件配合孔径 Bore for center Member	D	DH	L	I	T	t	S (max.)	A	C	质量 Mass (kg)	调节螺栓 Adjust. Bolt
TL350-1	20~74	5600	17	25	6.0	49	49	89	M42	62	19	4.0	3.2	16	5	65	2.48	-
TL350-2	34~149																	



SPECIFICATION

- Type: TL350-2 (With special keyway and inner hole)
- Inner hole diameter: 22.23mm
- Keyway width: 4.78mm
- Torque range: 34~149N*m
- Maximum speed: 5600
- Weight: 2.48 kg
- Material: the main body is 45 steel, the friction plate is non-asbestos material

SHIPPING LIST

- Machine Friction Disc Lock Washer Torque Limiter Coupling x1

