



Chipsmall Limited consists of a professional team with an average of over 10 year of expertise in the distribution of electronic components. Based in Hongkong, we have already established firm and mutual-benefit business relationships with customers from,Europe,America and south Asia,supplying obsolete and hard-to-find components to meet their specific needs.

With the principle of “Quality Parts,Customers Priority,Honest Operation,and Considerate Service”,our business mainly focus on the distribution of electronic components. Line cards we deal with include Microchip,ALPS,ROHM,Xilinx,Pulse,ON,Everlight and Freescale. Main products comprise IC,Modules,Potentiometer,IC Socket,Relay,Connector.Our parts cover such applications as commercial,industrial, and automotives areas.

We are looking forward to setting up business relationship with you and hope to provide you with the best service and solution. Let us make a better world for our industry!



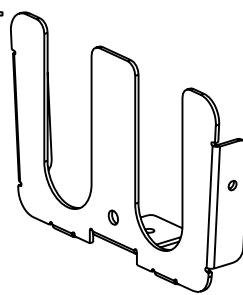
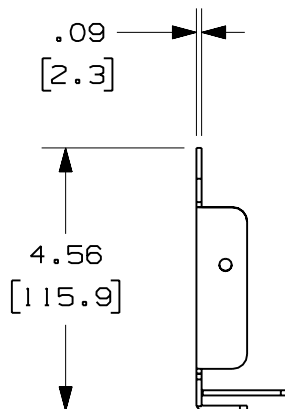
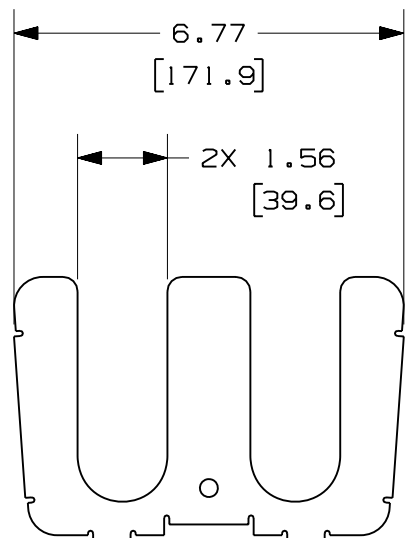
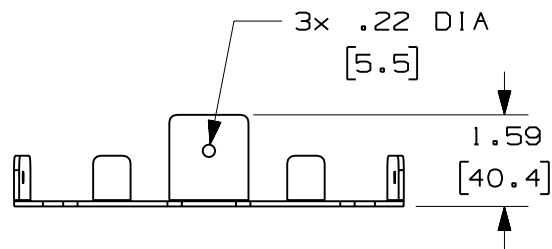
Contact us

Tel: +86-755-8981 8866 Fax: +86-755-8427 6832

Email & Skype: info@chipsmall.com Web: www.chipsmall.com

Address: A1208, Overseas Decoration Building, #122 Zhenhua RD., Futian, Shenzhen, China





PANDUIT PART NUMBER	WEIGHT
FITF6X4	0.70 LB/EACH (317g/EACH)



NOTES:

1. SEE CURRENT CATALOG FOR ADDITIONAL PART SUFFIXES TO INDICATE PACKAGE QUANTITY.
2. THE FIBERRUNNER 6x4 INNERDUCT TRANSITION FITTING ATTACHES TO ANY FIBERRUNNER 6x4 CHANNEL AND/OR FITTING AS WELL AS THE FIBERRUNNER 12x4 VERTICAL TEE FITTING TO CREATE A FLEXIBLE SPILL-OUT INTO EQUIPMENT FRAMES AND TELECOMMUNICATIONS CABINETS. THE INNERDUCT TRANSITION IS DESIGNED TO SECURELY HOLD UP TO FOUR (4) PIECES OF 1 1/2" (38.1) I.D. INNERDUCT AND/OR SOLID CORRUGATED LOOM TUBING.
3. THE FIBERRUNNER 6x4 INNERDUCT TRANSITION FITTING INCLUDES:
ONE (1) INNERDUCT TRANSITION FITTING,
THREE (3) #10-32x1/2 PAN HEAD PHILLIPS MACHINE SCREWS,
THREE (3) #10 HELICAL SPRINGS LOCKWASHERS,
THREE (3) #10-32 HEX MACHINE SCREW NUTS,
TWO (2) BT41 - DOME-TOP BARB-TY CABLE TIES
4. FINISH COLOR: BLACK (EXCEPT HARDWARE)
5. DIMENSIONS IN PARENTHESES ARE IN METRIC.

ENG. REF.: D37585DD_DC_FITF6X4_04.prt

CAD FILENAME/LAYERS: FITF6X4.pdf

PANDUIT CORP TINLEY PARK, ILLINOIS
FIBERRUNNER 6x4 INNERDUCT TRANSITION FITTING (FITF6X4)
 CUSTOMER DRAWING

UNLESS OTHERWISE SPECIFIED, DIMENSIONAL TOLERANCES ARE:
 (.X) ± (.XXX) ±
 (.XX) ± .03 (.8) ANGLES ±

UNLESS OTHERWISE SPECIFIED, ALL DIMENSIONS ARE GIVEN IN INCHES, THIRD ANGLE PROJECTION.

DRAWN BY: JHNU
 DATE: 10-3-00
 CHECK'D: CVV

MAT'L: STEEL

SCALE: NONE

DRAWING NO.: 37585-76
 DWG SIZE: A

REV	DATE	BY	CHK	DESCRIPTION	ECN	R	CUST	SUP	GMBH
-	-----	---	---	I. REVISED PART WEIGHT	-----	--	--		
-	-----	---	---	H. REVISED GENERAL NOTES G. REVISED CAD FILENAME	-----	--	--		
2	6-23-06	DTP	RN	F. REVISED DRAWING TITLE E. REVISED AND REDRAWN	37585-76	RN	RN		