



Chipsmall Limited consists of a professional team with an average of over 10 year of expertise in the distribution of electronic components. Based in Hongkong, we have already established firm and mutual-benefit business relationships with customers from,Europe,America and south Asia,supplying obsolete and hard-to-find components to meet their specific needs.

With the principle of “Quality Parts,Customers Priority,Honest Operation,and Considerate Service”,our business mainly focus on the distribution of electronic components. Line cards we deal with include Microchip,ALPS,ROHM,Xilinx,Pulse,ON,Everlight and Freescale. Main products comprise IC,Modules,Potentiometer,IC Socket,Relay,Connector.Our parts cover such applications as commercial,industrial, and automotives areas.

We are looking forward to setting up business relationship with you and hope to provide you with the best service and solution. Let us make a better world for our industry!



Contact us

Tel: +86-755-8981 8866 Fax: +86-755-8427 6832

Email & Skype: info@chipsmall.com Web: www.chipsmall.com

Address: A1208, Overseas Decoration Building, #122 Zhenhua RD., Futian, Shenzhen, China



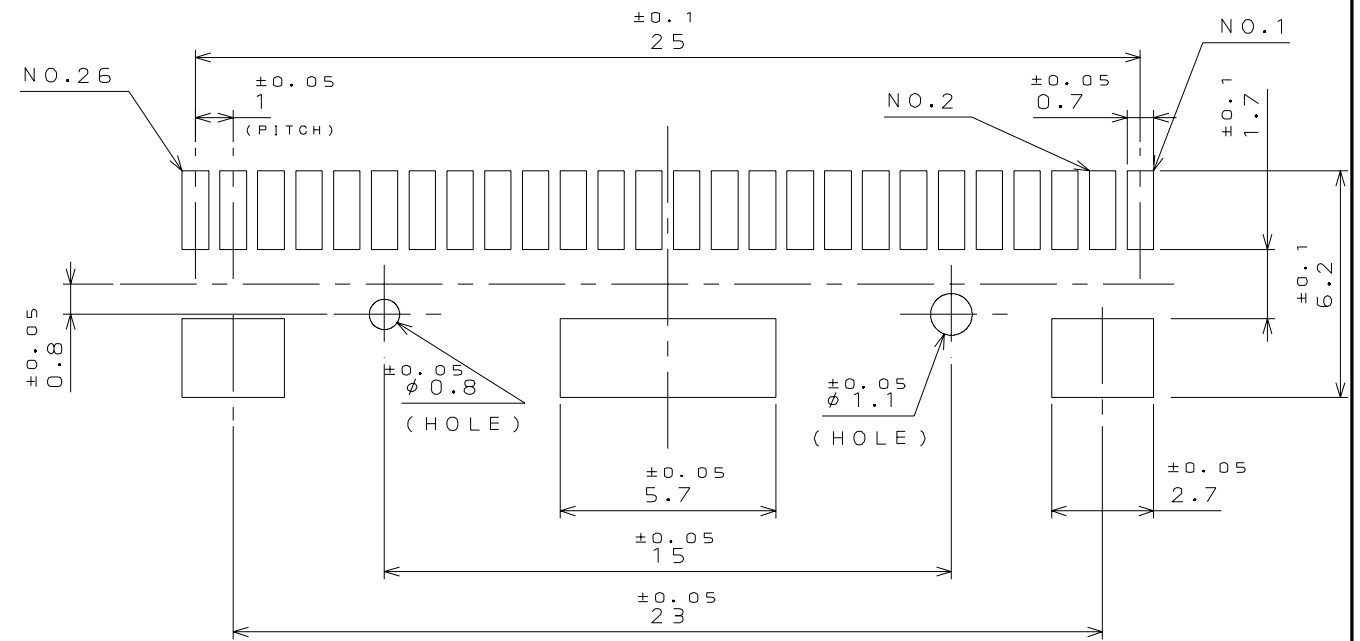
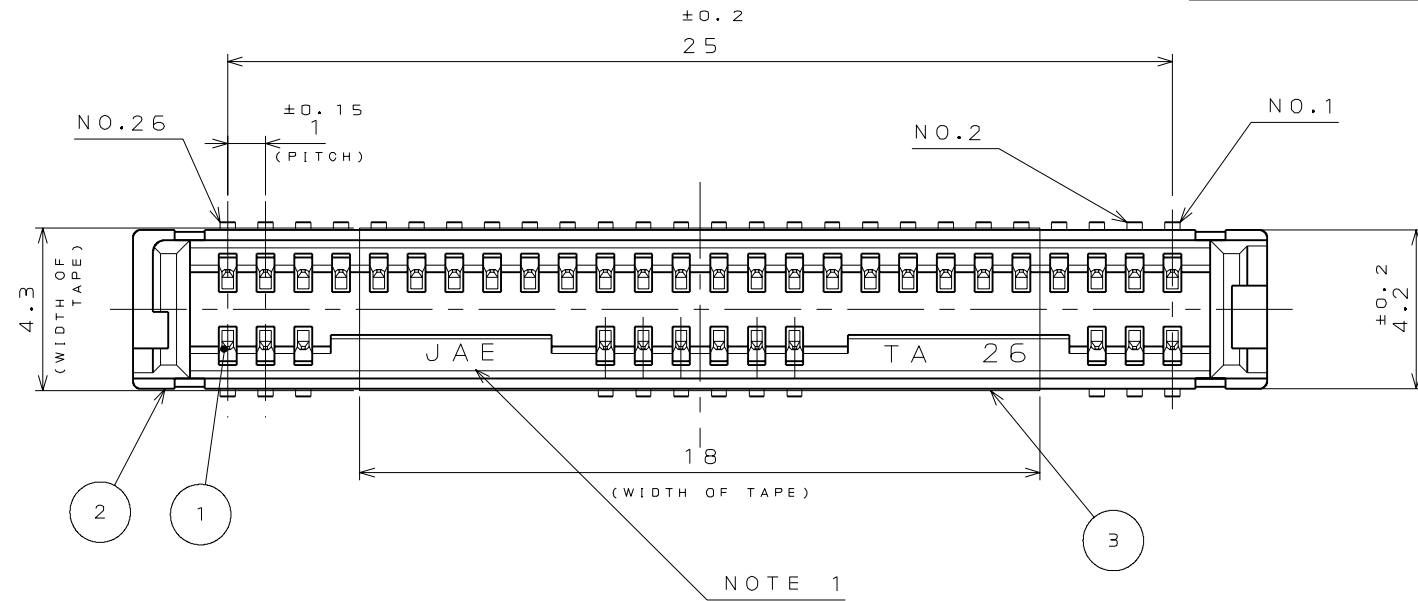
SJ102520

(ON 9NIMVARD) 台 号 理 号

REFERENCE ONLY

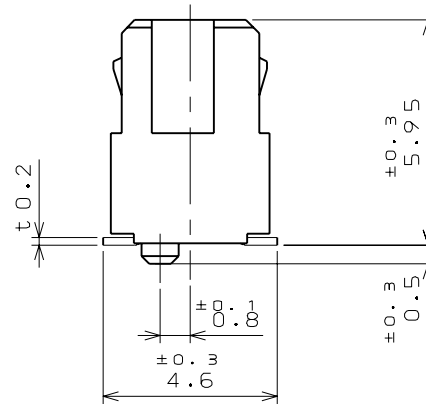
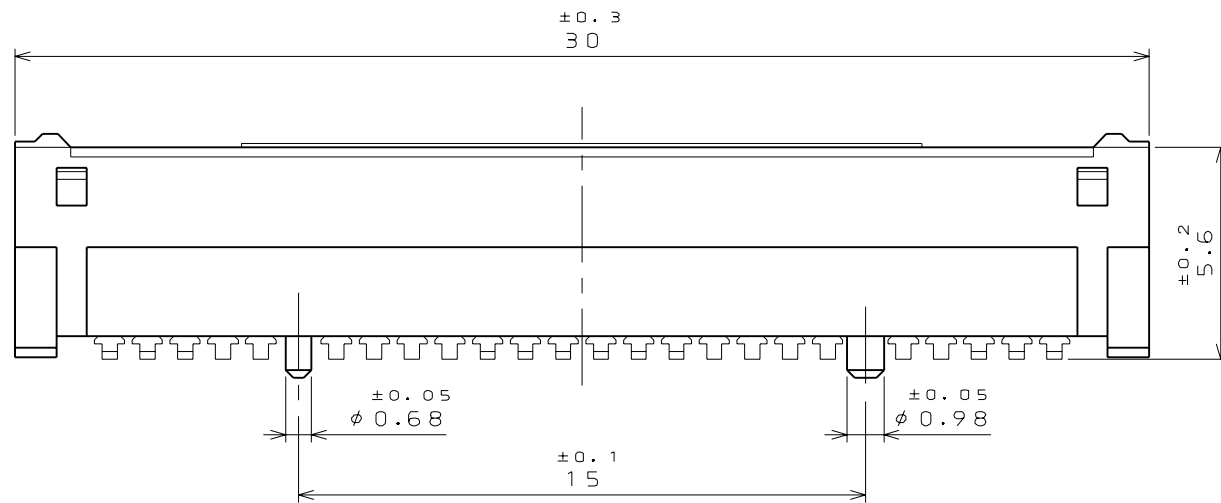


版数 REV.	年月日 DATE	DCN NO.	変更内容 DESCRIPTION	製図 DR.	担当 CHK.	査閲 APPD.	承認 APPD.



PATTERN DIMENSION (REF.)

適合基板寸法 (参考)



NOTE 1. COMPANY LOGO "JAE" AS INDICATED.

3	HEAT RESISTING TAPE	1	ARAMID		t0.05
2	INSULATOR	1	GLASS FILLED LCP		UL94V-0 BLACK
1	CONTACT	38	COPPER ALLOY	CONTACT AREA: GOLD(0.3μm MIN.) OVER NICKEL	TERMINAL AREA: TIN OVER NICKEL
符号 NO.	名称 DESCRIPTION	个数 QTY.	材料 MATERIAL	仕上 FINISH	備考 REMARKS

仕様書 (SPECIFICATION)		第1版 (ORIGINAL DATE) 30.Mar.2005		尺度 (SCALE) 5:1	シリーズ (SERIES)
一般公差 (GENERAL TOLERANCE)		製図 DR.	名称 (TITLE) FK3S026WQ1		
寸法 (DIMENSION)	角度 (ANGLES)	担当 CHK.	T.MORITAKE		
. ±0.8	X° ±	査閲 APPD.	Y.YAHIRO		
.X ±0.4	X°X' ±	承認 APPD.	K.HISATOMI		
.XX ±0.1		質量 (MASS)			
.XXX ±		日本航空電子工業株式会社 JAPAN AVIATION ELECTRONICS INDUSTRY, LTD.		図面番号 (DRAWING NO.) SJ102520	版数 (REV.) 1

特別管理品目
SPECIAL CONTROL ITEM
DCOM

DCF-C-212E(03.08)

0 10 20 30 40 50 60 70 80 90 100