



Chipsmall Limited consists of a professional team with an average of over 10 year of expertise in the distribution of electronic components. Based in Hongkong, we have already established firm and mutual-benefit business relationships with customers from,Europe,America and south Asia,supplying obsolete and hard-to-find components to meet their specific needs.

With the principle of “Quality Parts,Customers Priority,Honest Operation,and Considerate Service”,our business mainly focus on the distribution of electronic components. Line cards we deal with include Microchip,ALPS,ROHM,Xilinx,Pulse,ON,Everlight and Freescale. Main products comprise IC,Modules,Potentiometer,IC Socket,Relay,Connector.Our parts cover such applications as commercial,industrial, and automotives areas.

We are looking forward to setting up business relationship with you and hope to provide you with the best service and solution. Let us make a better world for our industry!



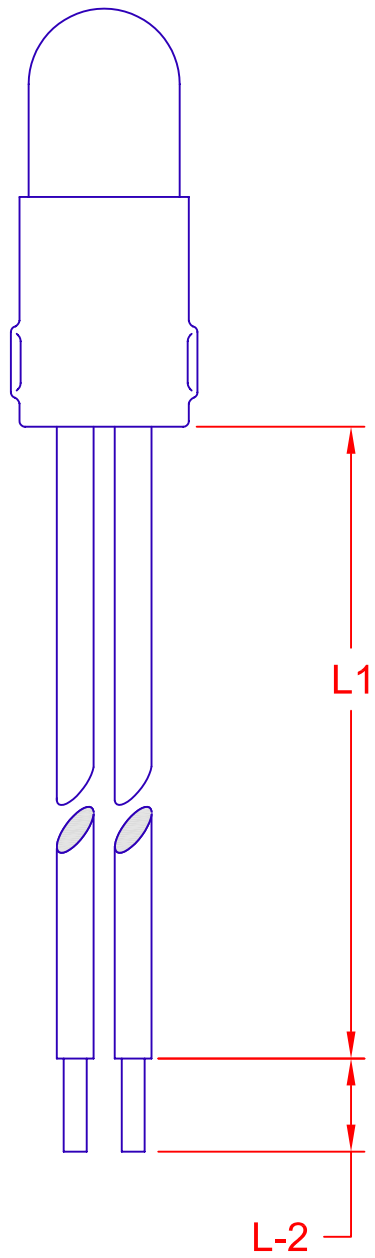
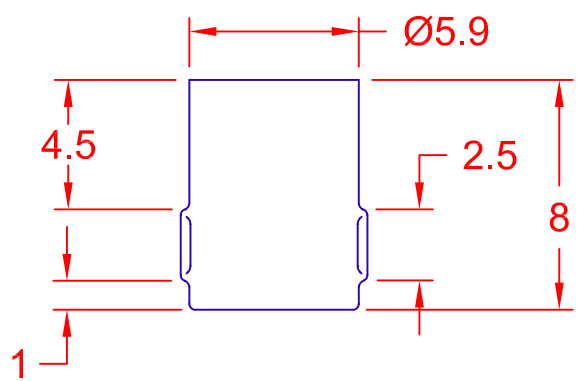
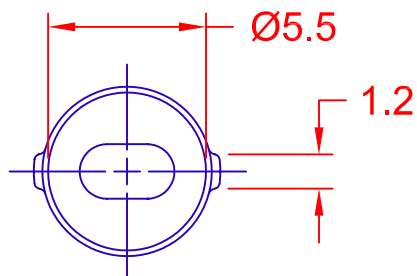
Contact us

Tel: +86-755-8981 8866 Fax: +86-755-8427 6832

Email & Skype: info@chipsmall.com Web: www.chipsmall.com

Address: A1208, Overseas Decoration Building, #122 Zhenhua RD., Futian, Shenzhen, China





WIRE COLOR: WHITE, RED, BLUE, BLACK

FLC - 1784 - 28 - 12 - .2 - WHITE

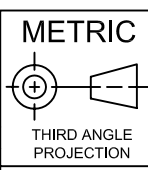
TINNED: (L2)
.20 & .40 (INCH)

LEAD LENGTH: (L1)
4, 6, 8, 10 & 12 (INCH)

LEAD WIRE: 26 & 28 AWG
INSULATED, UL APPROVED

LAMP: SPECIFY ACTUAL WIRE
TERMINAL LAMP PART NUMBER

SERIES TYPE: FLC



METRIC
DIMENSIONS ARE
IN MILLIMETERS
TOLERANCE UNLESS
OTHERWISE SPECIFIED
1 PL +/- 0.2
2 PL +/- 0.20
ANGLE +/-

JKL COMPONENTS CORPORATION

TITLE
NICKEL PLATED BRASS BASE
T-1 3/4 FLYING LEAD

DRAWN BY
L. WENGSTROM

APPVD BY
ED

DATE
7/9/01

SIZE
A

FSCM NO.
55335

DRAWING NO.
FLYING LEAD FLC T-1 3/4

- CAD DRAWING -
MANUAL REVISIONS NOT PERMITTED

SCALE
NONE

RELEASED DATE
7/9/01

REVISION DATE

REV. NO.
1 OF 1

REV. NO.	DESCRIPTION/ECO NUMBER	APPVD DATE
RELEASED		7/9/01