



Chipsmall Limited consists of a professional team with an average of over 10 year of expertise in the distribution of electronic components. Based in Hongkong, we have already established firm and mutual-benefit business relationships with customers from,Europe,America and south Asia,supplying obsolete and hard-to-find components to meet their specific needs.

With the principle of “Quality Parts,Customers Priority,Honest Operation,and Considerate Service”,our business mainly focus on the distribution of electronic components. Line cards we deal with include Microchip,ALPS,ROHM,Xilinx,Pulse,ON,Everlight and Freescale. Main products comprise IC,Modules,Potentiometer,IC Socket,Relay,Connector.Our parts cover such applications as commercial,industrial, and automotives areas.

We are looking forward to setting up business relationship with you and hope to provide you with the best service and solution. Let us make a better world for our industry!



Contact us

Tel: +86-755-8981 8866 Fax: +86-755-8427 6832

Email & Skype: info@chipsmall.com Web: www.chipsmall.com

Address: A1208, Overseas Decoration Building, #122 Zhenhua RD., Futian, Shenzhen, China

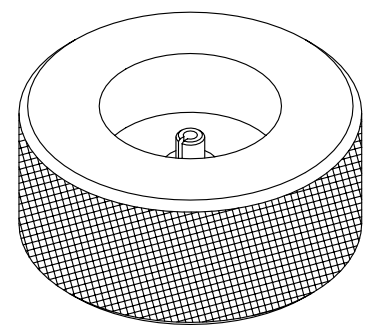
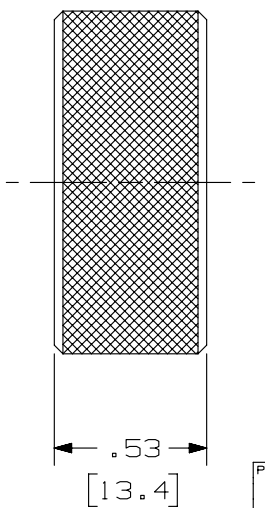
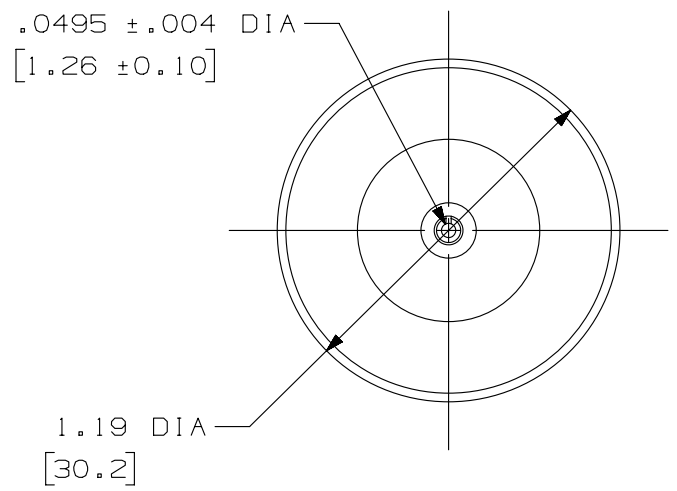


THIS COPY IS PROVIDED ON A RESTRICTED BASIS AND IS NOT TO BE USED IN ANY WAY DETRIMENTAL TO THE INTERESTS OF PANDUIT CORP.

PANDUIT PART NUMBER	WEIGHT
FLCASCP	.03 LB./EACH [13.54 GRAMS/EACH]

NOTES:

1. SEE CURRENT CATALOG FOR ADDITIONAL PART NUMBER SUFFIXES TO INDICATE PACKAGE QUANTITIES.
2. THIS ADAPTER IS USED TO INSPECT THE ENDFACE OF 1.25mm SIZE FERRULES WHEN ATTACHED TO THE PANDUIT 200x MICROSCOPE #FSCOPE.
3. ALL DIMENSIONS IN BRACKETS ARE METRIC [mm].
4. DO NOT USE THIS ADAPTER TO VIEW AN ACTIVE FIBER SIGNAL, FAILURE TO DO SO MAY RESULT IN SERIOUS EYE DAMAGE.



PART NUMBER		FLCASCP		
TITLE		1.25mm FERRULE ADAPTER FOR FSCOPE		
		CUSTOMER DRAWING		
ITEM REVISION NAME		M01190CD/04		
DATASET FILE NAME		M01190CD_DC/00C		
UNLESS OTHERWISE SPECIFIED, DIMENSIONAL TOLERANCES ARE: IN [mm]		PANDUIT		
.x ± .xxx ± .010 [.3] .xx ± .03 [.8]				
ANGLES ±		DRAWING NUMBER: 01190-28		
THIRD ANGLE PROJECTION		SHT 1 OF 1		
DRAWN BY	DATE	CHK	SCALE	SIZE
EFK	07-24-03	RTF I	NONE	A

2	2/11/15	JSP	WJM	RWB	A. UPDATED DRAWING TITLE BLOCK.	01190-28
REV	DATE	BY	CHK	APR	DESCRIPTION	ECN

D10100DA/14