



Chipsmall Limited consists of a professional team with an average of over 10 year of expertise in the distribution of electronic components. Based in Hongkong, we have already established firm and mutual-benefit business relationships with customers from,Europe,America and south Asia,supplying obsolete and hard-to-find components to meet their specific needs.

With the principle of “Quality Parts,Customers Priority,Honest Operation,and Considerate Service”,our business mainly focus on the distribution of electronic components. Line cards we deal with include Microchip,ALPS,ROHM,Xilinx,Pulse,ON,Everlight and Freescale. Main products comprise IC,Modules,Potentiometer,IC Socket,Relay,Connector.Our parts cover such applications as commercial,industrial, and automotives areas.

We are looking forward to setting up business relationship with you and hope to provide you with the best service and solution. Let us make a better world for our industry!



Contact us

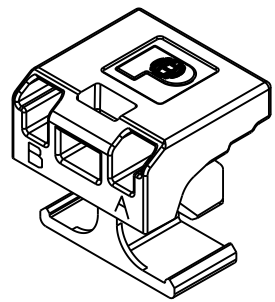
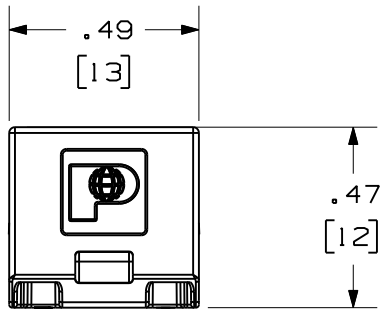
Tel: +86-755-8981 8866 Fax: +86-755-8427 6832

Email & Skype: info@chipsmall.com Web: www.chipsmall.com

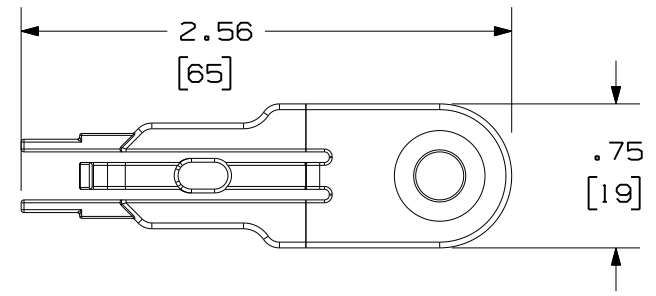
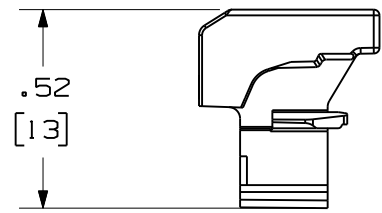
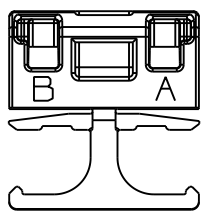
Address: A1208, Overseas Decoration Building, #122 Zhenhua RD., Futian, Shenzhen, China




THIS COPY IS PROVIDED ON A RESTRICTED BASIS AND IS NOT TO BE USED IN ANY WAY DETRIMENTAL TO THE INTERESTS OF PANDUIT CORP.



- NOTES:
1. SEE CURRENT CATALOG FOR ADDITIONAL PART NUMBERS AND/OR COLORS.
 2. MINIMUM ORDER: 10 LOCK-IN DUPLEX CLIPS.
 3. ONE (1) REMOVAL TOOL (SHOWN BELOW) IS PROVIDED PER 10 LOCK-IN DUPLEX CLIPS ORDERED.
 4. SEE CATALOG FOR COMPLETE LIST OF PARTS APPLICABLE FOR USE WITH THIS PART.
 5. MATERIAL:
 - A. LOCK-IN CLIP: PLASTIC
 - B. REMOVAL TOOL: PLASTIC
 - C. ALL MATERIALS AND COMPONENTS USED MEET THE MATERIAL RESTRICTIONS OF RoHS, (EUROPEAN DIRECTIVE 2002/95/EC ON THE RESTRICTION OF HAZARDOUS SUBSTANCES) AS PROPOSED BY THE RoHS TECHNICAL ADAPTATION COMMITTEE.
 6. DIMENSIONS IN BRACKETS ARE METRIC



REMOVAL TOOL
SCALE: 1 : 1

										LC CONNECTOR LOCK-IN DUPLEX CLIP AND REMOVAL TOOL CUSTOMER DRAWING		
										 PANDUIT ™ CORP. TINLEY PARK, ILL 60477		
										ALL DIMENSIONS ARE GIVEN IN INCHES UNLESS OTHERWISE SPECIFIED. DIMENSIONAL TOLERANCES ARE: (.X) ±.03 (.XXX) ±.010 (.3) ±.005 ANGLES		
										DRAWING FILENAME M02793BF_DC/00A (MLCCL)		
										SCALE 2 : 1		
										PART NO. MLCCL		
										DRAWING NO. 02793-02		
										SIZE A		
R	07-21-08	MC	pjt	RELEASED TO PRODUCTION	02793-02	pjt					DRAWN BY MC	REVIEW DRAWING NUMBERS
REV	DATE	BY	CHK	DESCRIPTION	ECN	R	CUST	SUP	OTH	DATE 07-11-08	CHK'D pjf	