



Chipsmall Limited consists of a professional team with an average of over 10 year of expertise in the distribution of electronic components. Based in Hongkong, we have already established firm and mutual-benefit business relationships with customers from,Europe,America and south Asia,supplying obsolete and hard-to-find components to meet their specific needs.

With the principle of “Quality Parts,Customers Priority,Honest Operation,and Considerate Service”,our business mainly focus on the distribution of electronic components. Line cards we deal with include Microchip,ALPS,ROHM,Xilinx,Pulse,ON,Everlight and Freescale. Main products comprise IC,Modules,Potentiometer,IC Socket,Relay,Connector.Our parts cover such applications as commercial,industrial, and automotives areas.

We are looking forward to setting up business relationship with you and hope to provide you with the best service and solution. Let us make a better world for our industry!



Contact us

Tel: +86-755-8981 8866 Fax: +86-755-8427 6832

Email & Skype: info@chipsmall.com Web: www.chipsmall.com

Address: A1208, Overseas Decoration Building, #122 Zhenhua RD., Futian, Shenzhen, China

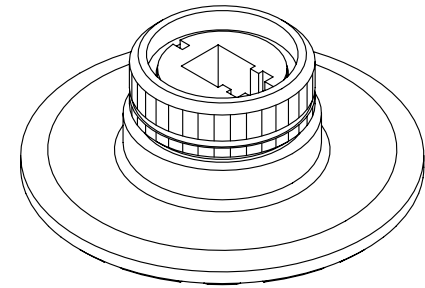
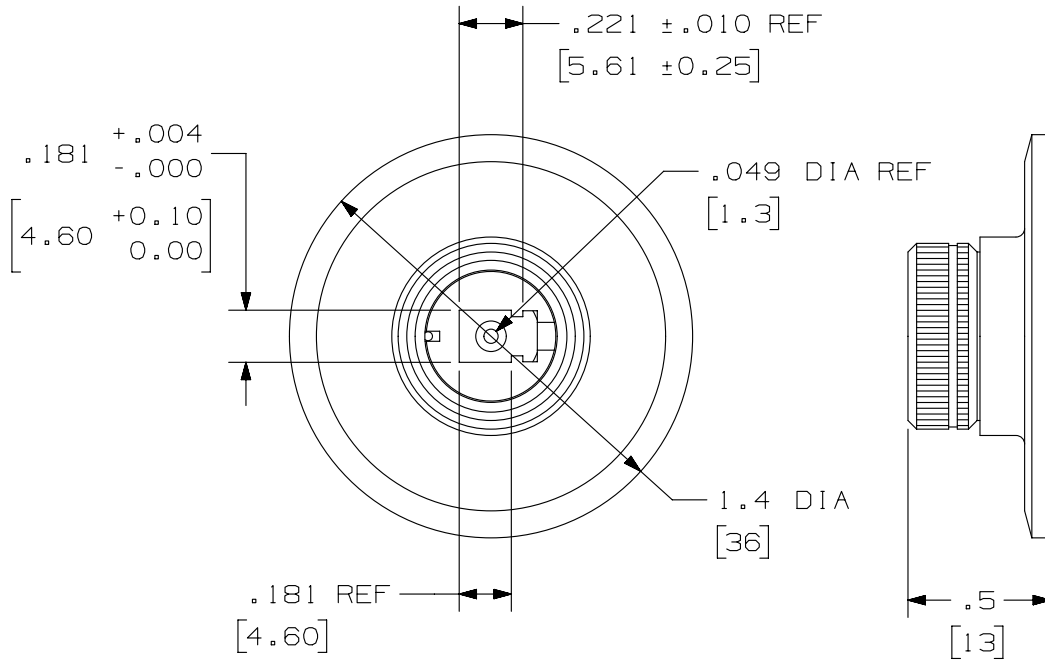


THIS COPY IS PROVIDED ON A RESTRICTED BASIS AND IS NOT TO BE USED IN ANY WAY DETRIMENTAL TO THE INTERESTS OF PANDUIT CORP.

PANDUIT PART NUMBER	WEIGHT
FLCPK	.05 LB./EACH [22.2 GRAMS/EACH]

NOTES:

1. SEE CURRENT CATALOG FOR ADDITIONAL PART NUMBER SUFFIXES TO INDICATE PACKAGE QUANTITIES.
2. THE POLISHING PUCK IS CONSTRUCTED FROM A NON-RUSTING, NON-PITTING MATERIAL AND IS DESIGNED TO BE USED FOR THE POLISHING OF LC TYPE CONNECTORS.
3. THE POLISHING PUCK INCORPORATES A SPRING-LOADED "POSITIVE" LATCHING MECHANISM THAT RETAINS THE CONNECTOR AND DOES NOT ALLOW IT TO ROTATE DURING THE POLISHING PROCESS WHILE SUPPLYING A CONSTANT PRESSURE ONTO THE ENDFACE OF THE FERRULE.
4. ALL DIMENSIONS IN BRACKETS ARE METRIC [mm].



PART NUMBER		FLCPK	
TITLE			
LC POLISHING PUCK		CUSTOMER DRAWING	
ITEM REVISION NAME		M01190CA/02	
DATASET FILE NAME		M01190CA_DC/00C	
UNLESS OTHERWISE SPECIFIED, DIMENSIONAL TOLERANCES ARE: IN [mm]		MATERIAL:	
.x ± .xx ± .03 [.8]		.xxx ± .010 [.3]	
ANGLES ±		DRAWING NUMBER:	
THIRD ANGLE PROJECTION		01190-25	
DRAWN BY	DATE	CHK	SCALE
EFK	07-24-03	RTF I	NONE
SHT 1 OF 1		SIZE	
A		A	

2	2/11/15	JSP	WJM	RWB	A. REVISED DRAWING TITLE BLOCK.	01190-25
REV	DATE	BY	CHK	APR	DESCRIPTION	ECN

D10100DA/14