



Chipsmall Limited consists of a professional team with an average of over 10 year of expertise in the distribution of electronic components. Based in Hongkong, we have already established firm and mutual-benefit business relationships with customers from,Europe,America and south Asia,supplying obsolete and hard-to-find components to meet their specific needs.

With the principle of “Quality Parts,Customers Priority,Honest Operation,and Considerate Service”,our business mainly focus on the distribution of electronic components. Line cards we deal with include Microchip,ALPS,ROHM,Xilinx,Pulse,ON,Everlight and Freescale. Main products comprise IC,Modules,Potentiometer,IC Socket,Relay,Connector.Our parts cover such applications as commercial,industrial, and automotives areas.

We are looking forward to setting up business relationship with you and hope to provide you with the best service and solution. Let us make a better world for our industry!



## Contact us

Tel: +86-755-8981 8866 Fax: +86-755-8427 6832

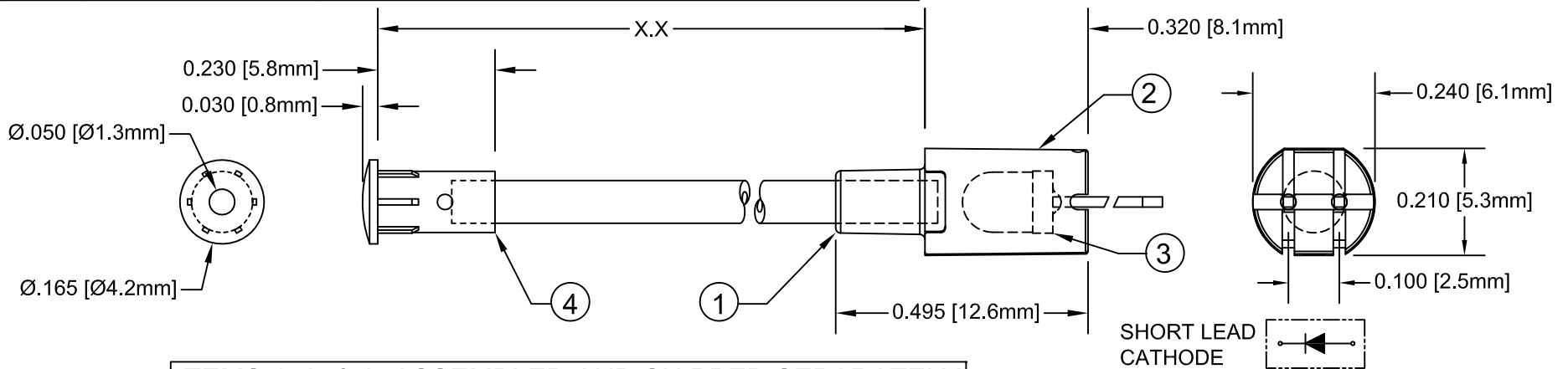
Email & Skype: info@chipsmall.com Web: www.chipsmall.com

Address: A1208, Overseas Decoration Building, #122 Zhenhua RD., Futian, Shenzhen, China

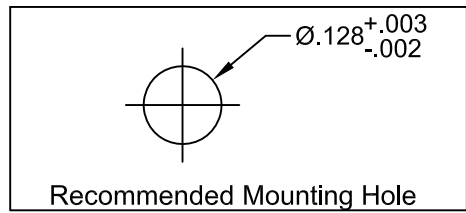


ITEM	Q'TY	PART NUMBER	PART DESCRIPTION
1	1	PML3-1	Bushing, FLeXible Light Pipe Adapter
2	1	PML3-2	Body, Flexible Light Pipe Adapter
3	1	3IR-940	T-1 (3mm) Infrared LED
4	1	LC-IR-XX.X	IR Lens Cap / FLPS1022-X.XXX Assembly ( X.XXX, Cut Length in Inches)

REV.	DESCRIPTION	DATE	APPROVED
A	Engineering Release.	05/20/09	T. Y.
B	Added Polarity Diagram.	03/22/10	T. Y.
C	Updated Fiber To FLPS In BOM	11/16/12	T. Y.

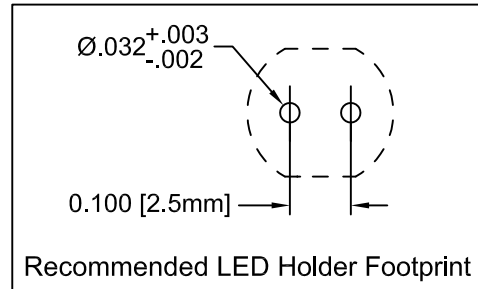


**ITEMS 1, 2, & 3 ASSEMBLED AND SHIPPED SEPARATELY**



" X.X " *	Tolerance
1.0" ~ 16.0"	±0.050"
16.1" ~ 40.0"	±0.15"
40.1" ~ 80.0"	±0.30"
80.1" ~ 3,940.0"	±0.5%

\* Available in 0.1" increments only



LED OPTICAL / ELECTRICAL CHARACTERISTICS					
Parameter	Test Condition	Minimum	Typical	Maximum	Units
Radiant Intensity	I <sub>F</sub> = 50mA	11.78	33.4	-	mW/sr
Forward Voltage	I <sub>F</sub> = 50mA	-	1.25	1.5	V
Peak Wavelength	I <sub>F</sub> = 20mA	-	940	-	nm
Spectral Line-Half Width	I <sub>F</sub> = 20mA	-	50	-	nm
Viewing Angle	I <sub>F</sub> = 20mA	-	50	-	deg

Lens Appearance: Blue Transparent

LED ABSOLUTE MAXIMUM RATINGS		
Parameter	Maximum Rating	Unit
Power Dissipation	100	mW
Continuous Forward Current	100	mA
Peak Forward Current	1.0	A
Reverse Voltage	5	V
Reverse Current	10	uA

## ABSOLUTE TEMPERATURE RATINGS (Ta=25°C)

OPERATING TEMPERATURE RANGE \_\_\_\_\_ -25° C - 85° C  
 STORAGE TEMPERATURE \_\_\_\_\_ -30° C - 100° C  
 LEAD SOLDERING TEMPERATURE(1/16" FROM BODY) \_\_\_\_\_ 260° C FOR 5 SECONDS

STANDARD TOLERANCE ( UNLESS OTHERWISE SPECIFIED )	
DECIMALS	ANGULAR
.X ± .1	X° ± 1°
.XX ± .02	
.XXX ± .010	



4 THOMAS, IRVINE, CA. 92618  
 TEL: (949) 951-8808 FAX: (949) 951-3974

DESIGNED: <b>Raffy Paje</b>	DATE: <b>05/20/09</b>
CHECKED: <b>F. Jensen</b>	DATE: <b>05/20/09</b>

TITLE: FLEXIBLE LIGHT-PIPE LED ADAPTER ASSY, IR	
PART NO: FLPIRVXX.XIR940	REVISION: C
CAGE CODE : 32559	SHEET # 1 OF 1
CAD GENERATED DOCUMENT. DO NOT MEASURE DRAWING.	