



Chipsmall Limited consists of a professional team with an average of over 10 year of expertise in the distribution of electronic components. Based in Hongkong, we have already established firm and mutual-benefit business relationships with customers from,Europe,America and south Asia,supplying obsolete and hard-to-find components to meet their specific needs.

With the principle of "Quality Parts,Customers Priority,Honest Operation,and Considerate Service",our business mainly focus on the distribution of electronic components. Line cards we deal with include Microchip,ALPS,ROHM,Xilinx,Pulse,ON,Everlight and Freescale. Main products comprise IC,Modules,Potentiometer,IC Socket,Relay,Connector.Our parts cover such applications as commercial,industrial, and automotives areas.

We are looking forward to setting up business relationship with you and hope to provide you with the best service and solution. Let us make a better world for our industry!



Contact us

Tel: +86-755-8981 8866 Fax: +86-755-8427 6832

Email & Skype: info@chipsmall.com Web: www.chipsmall.com

Address: A1208, Overseas Decoration Building, #122 Zhenhua RD., Futian, Shenzhen, China



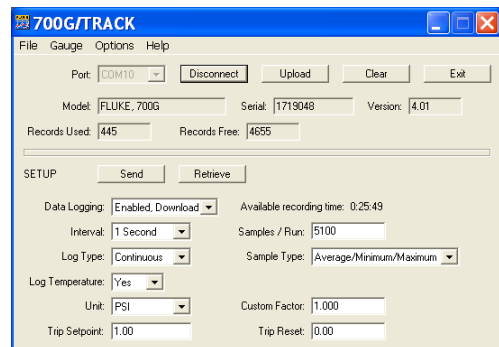
Fluke 700G Series Precision Pressure Test Gauges

Technical Data



Features

- Precision pressure measurement from ± 10 inH₂O/20 mbar to 10,000 psi/690 bar
- Absolute pressure measurement ranges 15, 30, 100, 300 psia
- Accuracy to 0.05 % of full scale
- Reference class gauge accuracies to 0.04 % of reading
- Easy to use, rugged construction for reliable performance
- CSA; Class 1, Div 2, Groups A-D rating
- ATEX rating: II 3 G Ex nA IIB T6
- Combine with the 700PTPK or 700HTPK pump kits for a complete pressure testing solution for up to 600 psi (40 bar) with the PTP-1 pneumatic pump and up to 10,000 psi (690 bar) with the HTP-2 hydraulic pump
- Log up to 8,493 pressure measurements to memory (requires 700G/TRACK software)
- Three-year warranty



Fluke-700PTPK Pneumatic Test Kit

- Combine with any Fluke-700G Series Gauge, 1,000 psi (69 bar) or less, to make a complete pressure testing kit
- Generate pressure up to 600 psi, 40 bar with the 700PTP-1 test pump
- Connect the 700G Series gauge directly to the included PTP-1 hand pump
- Includes hoses and adapters for connecting to the pressure device to be tested
- Hard case protects pump and gauge and allows gauge to remain connected to the pump

Fluke-700HTPK Hydraulic Test Kit

- Combine with any Fluke-700G Series Gauge, 1,000 psi (69 bar) range or greater, to make a complete pressure testing kit
- Generate pressure up to 10,000 psi, 690 bar with the included 700HTP-2 test pump
- Connect the 700G Series gauge directly to the HTP-2 hand pump
- Includes 700HTH-1 hose kit and adapters for connecting to the pressure device to be tested
- Hard case protects pump and gauge and allows gauge to remain connected to the pump

700G/TRACK Logging Software

- Use with 700G Series gauges to perform real time data logging to a PC
- Download logging configurations to the 700G Series gauges for a remote logging event
- Configure logging event reading rate, duration and measurement units
- Upload measurements logged remotely and display or export measurements
- Includes communication cable for connection to a PC

Specifications

Model	Range	Resolution	Accuracy	Burst pressure
Fluke-700G01	-10 to +10 inH ₂ O -20 mbar to 20 mbar	0.001 inH ₂ O 0.001 mbar	Positive pressure ± 0.1 % of range, Vacuum ± 0.1 % of range	3 psi 210 mbar
Fluke-700G02	-1 to +1 psi -70 mbar to 70 mbar	0.0001 psi 0.001 mbar		5 psi 350 mbar
Fluke-700G04	-14 psi to 15 psi -.97 bar to 1 bar	0.001 psi 0.0001 bar	Positive pressure ± 0.05 % FS Vacuum ± 0.1 % FS	60 psi 4 bar
Fluke-700G05	-14 psi to 30 psi -.97 bar to 2 bar	0.001 psi 0.0001 bar		120 psi 8 bar
Fluke-700G06	-12 psi to 100 psi -.83 bar to 6.9 bar	0.01 psi 0.0001 bar		400 psi 26 bar
Fluke-700G27	-12 psi to 300 psi -.83 bar to 20 bar	0.01 psi 0.001 bar		1200 psi 80 bar
Fluke-700G07	-12 psi to 500 psi -.83 bar to 34 bar	0.01 psi 0.001 bar		2000 psi 138 bar
Fluke-700G08	-14 psi to 1000 psi -.97 bar to 69 bar	0.1 psi 0.001 bar		4000 psi 266 bar
Fluke-700G10	-14 to 2000 psi -.97 bar to 140 bar	0.1 psi 0.01 bar		8000 psi 550 bar
Fluke-700G29	-14 psi to 3000 psi -.97 bar to 200 bar	0.1 psi 0.01 bar		10000 psi 690 bar
Fluke-700G30	-14 psi to 5000 psi -.97 bar to 340 bar	0.1 psi 0.01 bar		10000 psi 690 bar
Fluke-700G31	-14 psi to 10000 psi -.97 bar to 690 bar	1 psi 0.01 bar		20000 psi 1035 bar
Fluke-700GA4	0 to 15 psia 0 to 1 bar absolute	0.001 psi 0.0001 bar	± 0.05 % of range	60 psi 4 bar
Fluke-700GA5	0 to 30 psia 0 to 2 bar absolute	0.001 psi 0.0001 bar		120 psi 8 bar
Fluke-700GA6	0 to 100 psia 0 to 6.9 bar absolute	0.01 psi 0.0001 bar		400 psi 27 bar
Fluke-700GA27	0 to 300 psia 0 to 20 bar absolute	0.01 psi 0.001 bar		1200 psi 80 bar
Fluke-700RG05	-14 to +30 psi -0.97 to +2 bar	0.001 psi 0.0001 bar	Positive pressure, ± 0.04 % of reading +.01 % of range, Vacuum ± 0.05 % of range	90 psi 6 bar
Fluke-700RG06	-12 to 100 psi -0.83 to 6.9 bar	0.01 psi 0.0001 bar	Positive pressure, ± 0.04 % of reading +.01 % of range, Vacuum ± 0.1 % of range	400 psi 27 bar
Fluke-700RG07	-12 to 500 psi -0.83 to 34	0.01 psi 0.001 bar		2000 psi 138 bar
Fluke-700RG08	-14 to 1000 psi -0.97 to 69 bar	0.1 psi 0.001 bar		4000 psi 275 bar
Fluke-700RG29	-14 to 3000 psi -0.97 to 200 bar	0.1 psi 0.01 bar		10000 psi 690 bar
Fluke-700RG30	-14 to 5000 psi -0.97 to 340 bar	0.1 psi 0.01 bar		15000 psi 1035 bar
Fluke-700RG31	-14 to 10000 psi -0.97 to 690 bar	1 psi 0.01 bar		20000 psi 1380 bar
700R Ranges: Temperature Compensation 0 e°C to 50 °C (32 °F to 122 °F) to rated accuracy. For temperatures from -10 °C to 0 °C and 50 °C to 55 °C, add .005 % FS/°C				
Media compatibility <ul style="list-style-type: none"> • 10 inH₂O, 1, 15, 30 psi: any clean dry non-corrosive gas • 100, 300, 500, 1000 psi: any liquids or gases compatible with 316 stainless steel and above 1000 psi: any non-flammable, non-toxic, non-explosive, non-oxidizing liquid or gas compatible with 316 stainless steel. 				

Mechanical specifications	
Dimensions (HxWxD)	12.7 cm x 11.4 cm x 3.7 cm (5in x 4.5in x 1.5in)
Pressure connection	¼ in NPT Male
Housing/Weight	Cast ZNAl 0.56 kg (1.22 lb) with holster
Display	5 ½ digits, 16.53 mm (0.65 in) high 20-segment bar graph, 0 to 100%
Power	Three AA alkaline batteries
Battery life	1,500 hours without backlight (continuous on), 2,000 hours at slow sample rate

Ordering information

Fluke-700G01	Pressure Gauge, ±10 inH ₂ O WC (0.4 PSIG)
Fluke-700G02	Pressure Gauge, ±30 inH ₂ O WC (1 PSIG)
Fluke-700G04	Pressure Gauge, ± 15 PSIG
Fluke-700G05	Pressure Gauge, 30 PSIG
Fluke-700G06	Pressure Gauge, 100 PSIG
Fluke-700G27	Pressure Gauge, 300 PSIG
Fluke-700G07	Pressure Gauge, 500 PSIG
Fluke-700G08	Pressure Gauge, 1000 PSIG
Fluke-700G10	Pressure Gauge, 2000 PSIG
Fluke-700G29	Pressure Gauge, 3000 PSIG
Fluke-700G30	Pressure Gauge, 5000 PSIG
Fluke-700G31	Pressure Gauge, 10000 PSIG
Fluke-700GA4	Pressure Gauge, 15 PSIA
Fluke-700GA5	Pressure Gauge, 30 PSIA
Fluke-700GA6	Pressure Gauge, 100 PSIA
Fluke-700GA27	Pressure Gauge, 300 PSIA
Fluke-700RG05	Pressure Gauge, Reference, 30 PSIG
Fluke-700RG06	Pressure Gauge, Reference, 100 PSIG
Fluke-700RG07	Pressure Gauge, Reference, 500 PSIG
Fluke-700RG08	Pressure Gauge, Reference, 1000 PSIG
Fluke-700RG29	Pressure Gauge, Reference, 3000 PSIG
Fluke-700RG30	Pressure Gauge, Reference, 5000 PSIG
Fluke-700RG31	Pressure Gauge, Reference, 10000 PSIG
700G/TRACK	Data logging software and cable
Fluke-700HTPK	Hydraulic test pump kit, 0 to 10000 PSI/690 BAR
Fluke-700PTPK	Pneumatic test pump kit, 0 to 600 PSI/40 BAR

Included accessories (Gauges)

Manual on CD-ROM in 14 languages
 Traceable certificate of calibration
 1/4" NPT to 1/4" ISO adapter

Fluke. *The Most Trusted Tools in the World.*

Fluke Corporation
 PO Box 9090, Everett, WA 98206 U.S.A.

Fluke Europe B.V.
 PO Box 1186, 5602 BD
 Eindhoven, The Netherlands

For more information call:
 In the U.S.A. (800) 443-5853 or
 Fax (425) 446-5116
 In Europe/M-East/Africa +31 (0) 40 2675 200 or
 Fax +31 (0) 40 2675 222
 In Canada (800)-36-FLUKE or
 Fax (905) 890-6866
 From other countries +1 (425) 446-5500 or
 Fax +1 (425) 446-5116
 Web access: <http://www.fluke.com>

©2013 Fluke Corporation.
 Specifications subject to change without notice.
 Printed in U.S.A. 6/2013 4131179B_EN
 Pub_ID: 11885-eng

Modification of this document is not permitted without written permission from Fluke Corporation.