



Chipsmall Limited consists of a professional team with an average of over 10 year of expertise in the distribution of electronic components. Based in Hongkong, we have already established firm and mutual-benefit business relationships with customers from,Europe,America and south Asia,supplying obsolete and hard-to-find components to meet their specific needs.

With the principle of “Quality Parts,Customers Priority,Honest Operation,and Considerate Service”,our business mainly focus on the distribution of electronic components. Line cards we deal with include Microchip,ALPS,ROHM,Xilinx,Pulse,ON,Everlight and Freescale. Main products comprise IC,Modules,Potentiometer,IC Socket,Relay,Connector.Our parts cover such applications as commercial,industrial, and automotives areas.

We are looking forward to setting up business relationship with you and hope to provide you with the best service and solution. Let us make a better world for our industry!



## Contact us

Tel: +86-755-8981 8866 Fax: +86-755-8427 6832

Email & Skype: info@chipsmall.com Web: www.chipsmall.com

Address: A1208, Overseas Decoration Building, #122 Zhenhua RD., Futian, Shenzhen, China



- NOTES:**
1. ROHS COMPLIANT
  2. MATERIALS:  
 FIBER OPTIC:  $\varnothing$  1.5MM OPTICAL CORE,  $\varnothing$  2.2MM POLYETHYLENE CABLE JACKET  
 LENS MOUNT: OPTICAL GRADE ACRYLIC  
 LED MOUNTS: FOR SMD 22 & THR 22 - NYLON 66, UL RATING 94-V2  
 FOR THR 5 22 - NYLON 66, UL RATING 94-HB  
 LENS: POLYCARBONATE, UL RATING 94-V2  
 LENS SPACER: POLYPROPYLENE
  3. OPTICAL CORE ENDS POLISHED TO 10 MICRONS.
  4. PANEL MOUNTING HOLE .250" (6.35mm) ON 3/8" (9.52mm) CENTERS
  5. PANEL THICKNESS FOR CLF 280: 1/16" (1.60mm) TO 1/8" (3.18mm);  
 CLB 300, CIR 301 AND SQB 400: 1/32" (0.79mm) TO 1/4" (6.35mm).
  6. FOR PANELS LESS THAN 3/16" (4.76mm) USE SPC 125 SPACER
  7. FOR ADDED SECURITY USE RING 268.
  8. FOR BEST RESULTS USE ONLY NARROW VIEWING ANGLE NON-DIFFUSED LEDS WITH OUTPUT POWER GREATER THAN 100mcd.
  9. U.S. AND FOREIGN PATENTS ISSUED.

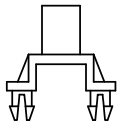
LIGHT PIPE ASSEMBLY  
 ORDERING CODE (EXAMPLE): **FLX XX**

| LENGTH      |               |
|-------------|---------------|
| LENGTH CODE | ACTUAL LENGTH |
| 02          | 2.0"          |
| 04          | 4.0"          |
| 06          | 6.0"          |
| 08          | 8.0"          |
| 12          | 12.0"         |

CUSTOM LENGTHS  
 AVAILABLE UPON  
 REQUEST

| REVISIONS |      |                            |         |          |      |
|-----------|------|----------------------------|---------|----------|------|
| ECN #     | REV. | DESCRIPTION                | DATE    | INITIALS | CHKD |
| -         | 001  | INITIAL RELEASE            | 7/8/10  | SMU      | DZ   |
| -         | 002  | CHG DWG FORMAT             | 8/2/10  | KH       | AZ   |
| -         | 003  | REVISED PER ECR 092810AA01 | 10/4/10 | KH       | AZ   |
| 396       | 004  | REVISED PER ECR 011812KH01 | 1/19/12 | KH       | AZ   |

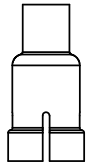
**MOUNTING OPTIONS  
 (ORDER SEPARATELY)**



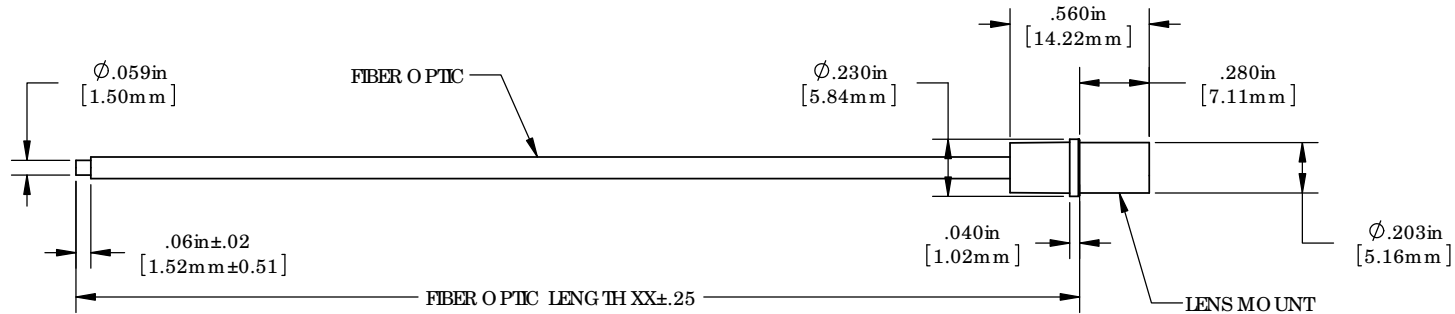
SMD 22



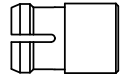
THR 22



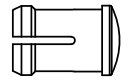
THR 5 22



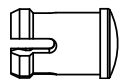
**LENS OPTIONS  
 (ORDER SEPARATELY)**



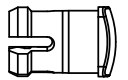
CLF 280



CLB 300



CIR 301



SQB 400

|  |                                      |                                    |   |             |    |             |     |             |  |   |
|--|--------------------------------------|------------------------------------|---|-------------|----|-------------|-----|-------------|--|---|
| <small>DIMENSION STYLE: INCHES (MM)<br/>         GENERAL TOLERANCES UNLESS OTHERWISE SPECIFIED</small><br><table border="1"> <tr> <td>INCHES</td> <td>MM</td> </tr> <tr> <td>X</td> <td>±.020 ±.508</td> </tr> <tr> <td>XX</td> <td>±.010 ±.254</td> </tr> <tr> <td>XXX</td> <td>±.005 ±.127</td> </tr> </table> | INCHES                               | MM                                 | X | ±.020 ±.508 | XX | ±.010 ±.254 | XXX | ±.005 ±.127 | <small>APPROVAL</small><br>DRAWN: KHOWARD<br>CHECKED: AZANELLI | <small>DATE</small><br>8/2/10<br>8/2/10 |
|  | INCHES                               | MM                                 |   |             |    |             |     |             |  |   |
| X  | ±.020 ±.508                          |                                    |   |             |    |             |     |             |  |   |
| XX   | ±.010 ±.254                          |                                    |   |             |    |             |     |             |  |   |
| XXX  | ±.005 ±.127                          |                                    |   |             |    |             |     |             |  |   |
| <small>THIRD ANGLE PROJECTION</small><br>  | <small>MATERIAL</small><br>SEE NOTES | <small>FINISH</small><br>SEE NOTES |   |             |    |             |     |             |  |   |
| <small>PROPRIETARY AND CONFIDENTIAL</small><br>THE INFORMATION CONTAINED IN THIS DRAWING IS THE SOLE PROPERTY OF VISUAL COMMUNICATIONS COMPANY, INC. ANY REPRODUCTION IN PART OR AS A WHOLE WITHOUT THE WRITTEN PERMISSION OF VISUAL COMMUNICATIONS COMPANY, INC IS PROHIBITED.                                  | <small>DO NOT SCALE DRAWING</small>  | <small>SCALE: 1:1</small>          |   |             |    |             |     |             |  |   |

**VCC OPTO ELECTRONICS**  
 190 BOSCH BLVD, SUITE 101 SAN MARCOS, CA 92069 USA  
 PHONE: (760) 560-1300, FAX: (760) 560-1301 EMAIL: vcc@vccinc.com

**TITLE:** FLX XX ASSEMBLY

|             |                 |            |
|-------------|-----------------|------------|
| <b>SIZE</b> | <b>DWG. NO.</b> | <b>REV</b> |
| <b>B</b>    | FLX XX          | 004        |

**SHEET 1 OF 1**