



Chipsmall Limited consists of a professional team with an average of over 10 year of expertise in the distribution of electronic components. Based in Hongkong, we have already established firm and mutual-benefit business relationships with customers from,Europe,America and south Asia,supplying obsolete and hard-to-find components to meet their specific needs.

With the principle of “Quality Parts,Customers Priority,Honest Operation,and Considerate Service”,our business mainly focus on the distribution of electronic components. Line cards we deal with include Microchip,ALPS,ROHM,Xilinx,Pulse,ON,Everlight and Freescale. Main products comprise IC,Modules,Potentiometer,IC Socket,Relay,Connector.Our parts cover such applications as commercial,industrial, and automotives areas.

We are looking forward to setting up business relationship with you and hope to provide you with the best service and solution. Let us make a better world for our industry!



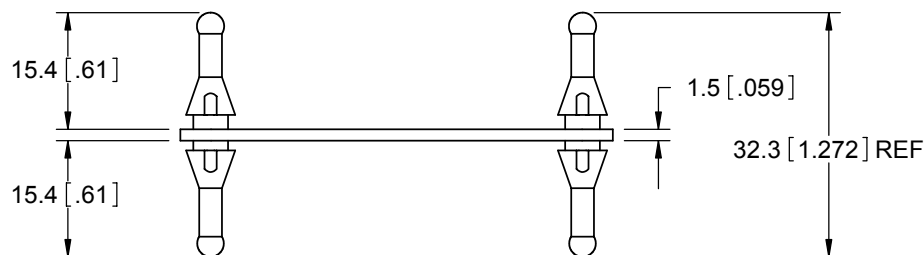
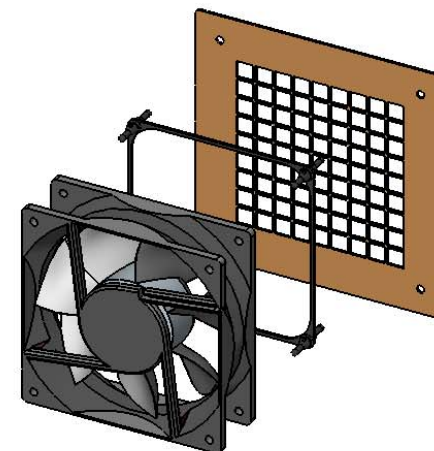
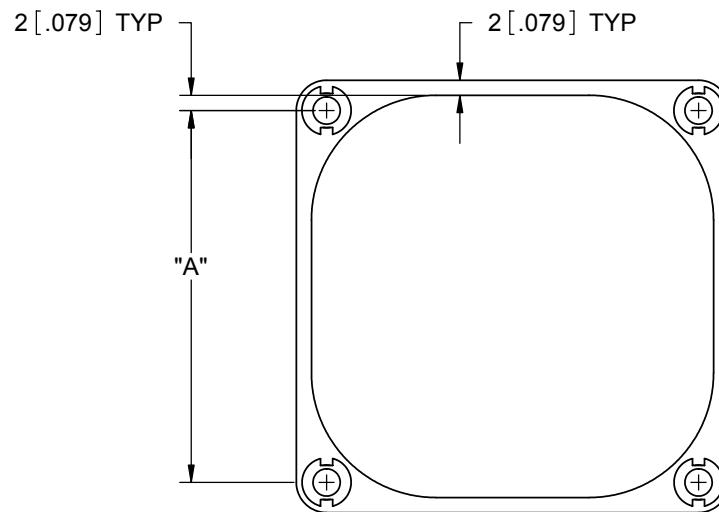
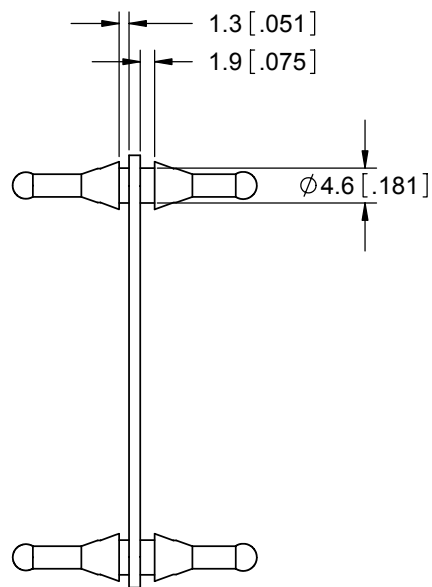
## Contact us

Tel: +86-755-8981 8866 Fax: +86-755-8427 6832

Email & Skype: [info@chipsmall.com](mailto:info@chipsmall.com) Web: [www.chipsmall.com](http://www.chipsmall.com)

Address: A1208, Overseas Decoration Building, #122 Zhenhua RD., Futian, Shenzhen, China





- NOTES:
1. MATERIAL: EPDM RUBBER 40, SHORE A (RMS-180)
  2. COLOR: BLACK
  3. TO PULL THROUGH A  $5 \pm 0.1$  [.197 ± .039] HOLE, WITH MAXIMUM 1.4 [.055] PANEL AND 2 [.079] FAN THICKNESS
  4. ALTERNATE UNITS FOR REFERENCE ONLY.

PART NUMBER

"A"  
AS ASSEMBLED

FMG-1

50 [1.969]




FMG-2

71.5 [2.815]

FMG-3

105.2 [4.142]

A	RELEASED FOR PRODUCTION	SK	01/15/07
REV.	DESCRIPTION	ENGR.	DATE

TITLE: FAN MOUNT GASKET						DWG IN mm [IN]	
CREATED USING SOLIDWORKS	FILE #: FMG		DWN: D.J.Z.	APP: D.J.Z.		FINAL	
GENERAL TOLERANCE UNLESS NOTED ±0.25 ANG. ±1°	SHEET: 1 OF 1	SHEET SIZE: A	DT: 01/15/07	CHKD: S.K.	PART #		PRINT TYPE
	RE: RICHCO INC.		RICHCO, INC. ENG@RICHCO-INC.COM (773) 539-4060		SEE TABLE		CA