



Chipsmall Limited consists of a professional team with an average of over 10 year of expertise in the distribution of electronic components. Based in Hongkong, we have already established firm and mutual-benefit business relationships with customers from,Europe,America and south Asia,supplying obsolete and hard-to-find components to meet their specific needs.

With the principle of "Quality Parts,Customers Priority,Honest Operation,and Considerate Service",our business mainly focus on the distribution of electronic components. Line cards we deal with include Microchip,ALPS,ROHM,Xilinx,Pulse,ON,Everlight and Freescale. Main products comprise IC,Modules,Potentiometer,IC Socket,Relay,Connector.Our parts cover such applications as commercial,industrial, and automotives areas.

We are looking forward to setting up business relationship with you and hope to provide you with the best service and solution. Let us make a better world for our industry!



## Contact us

Tel: +86-755-8981 8866 Fax: +86-755-8427 6832

Email & Skype: info@chipsmall.com Web: www.chipsmall.com

Address: A1208, Overseas Decoration Building, #122 Zhenhua RD., Futian, Shenzhen, China

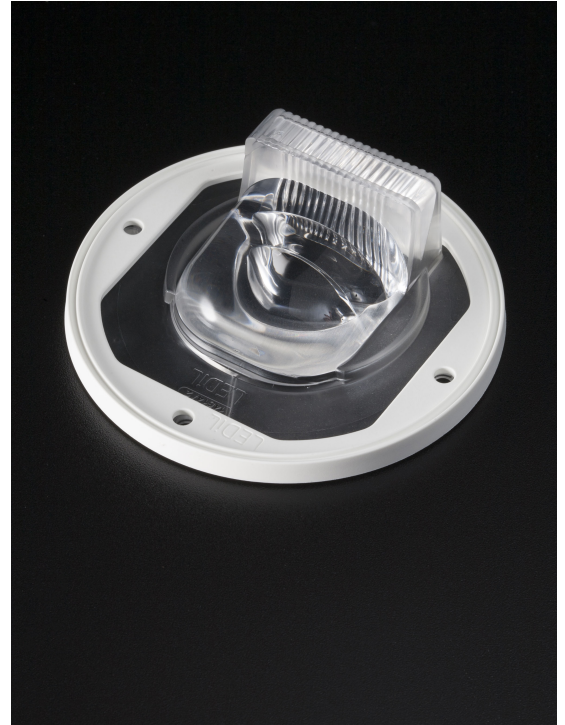


## STELLA-T4

IESNA Type IV for wider roads and area lighting like car parks and gardens. White version. Compatible with up to 30 mm LES size COBs.

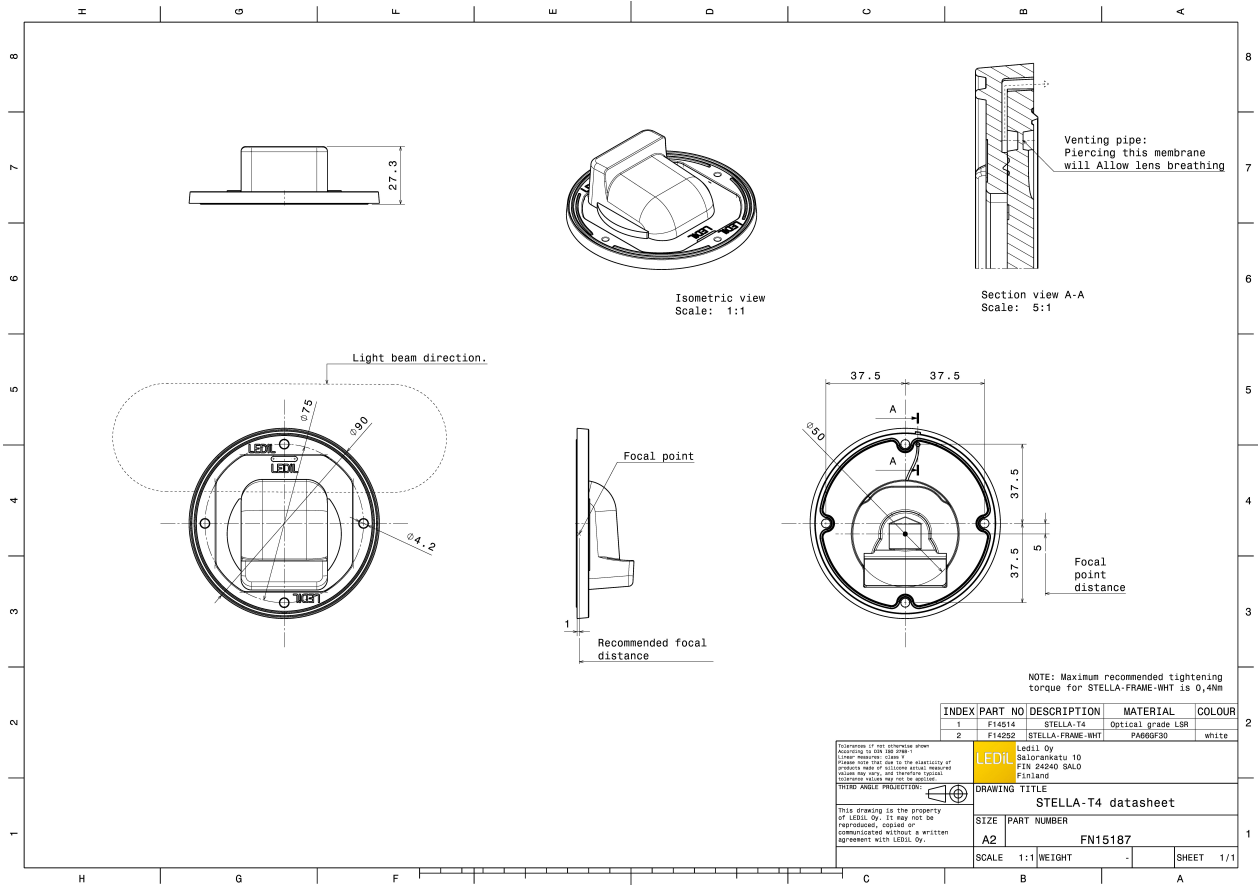
### TECHNICAL SPECIFICATIONS:

Dimensions	Ø 90 mm
Height	26.9 mm
Fastening	screw
Colour	white
Box size	480 x 280 x 300 mm
Box weight	7.1 kg
Quantity in Box	135 pcs
ROHS compliant	yes ⓘ



### MATERIAL SPECIFICATIONS:

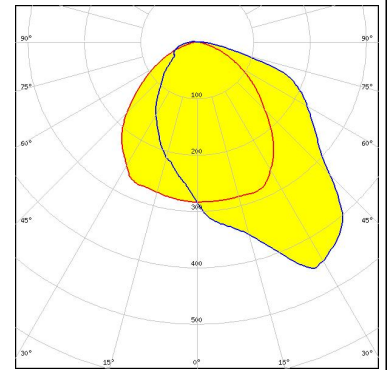
Component	Type	Material	Colour
STELLA-T4	Lens	Silicone	clear
STELLA-FRAME-WHT	Holder	PA66	white



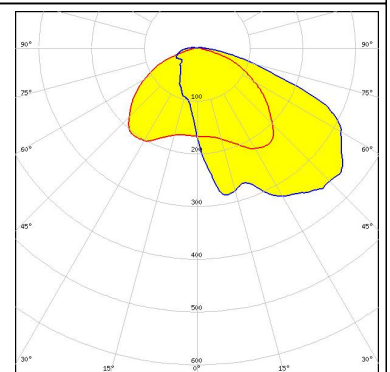
### PHOTOMETRIC DATA (MEASURED):



LED V22 Gen7  
FWHM Asymmetric  
Efficiency 90 %  
Peak intensity 0.470 cd/lm  
Required components:



LED CXA/B 1816 & CXA/B 1820 & CXA 1850  
FWHM Asymmetric  
Efficiency 92 %  
Peak intensity 0.480 cd/lm  
Required components:



LED LUXEON CoB 1208  
FWHM Asymmetric  
Efficiency 93 %  
Peak intensity 0.500 cd/lm  
Required components:



LED LUXEON CoB 1211  
FWHM Asymmetric  
Efficiency 92 %  
Peak intensity 0.500 cd/lm  
Required components:

### PHOTOMETRIC DATA (MEASURED):



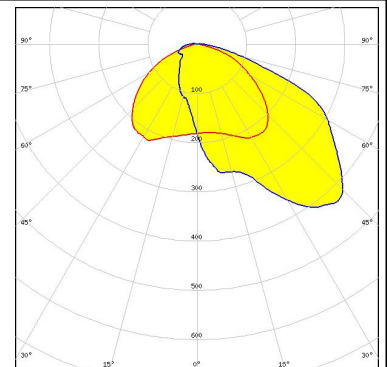
LED CXM-14  
FWHM Asymmetric  
Efficiency 94 %  
Peak intensity 0.500 cd/lm  
Required components:



LED CXM-18  
FWHM Asymmetric  
Efficiency 94 %  
Peak intensity 0.500 cd/lm  
Required components:



LED COB J-Type  
FWHM Asymmetric  
Efficiency 93 %  
Peak intensity 0.480 cd/lm  
Required components:



LED Soleriq P13  
FWHM Asymmetric  
Efficiency 93 %  
Peak intensity 0.490 cd/lm  
Required components:

### PHOTOMETRIC DATA (MEASURED):

#### OSRAM Opto Semiconductors

LED Soleriq P9  
FWHM Asymmetric  
Efficiency 94 %  
Peak intensity 0.710 cd/lm  
Required components:

#### OSRAM Opto Semiconductors

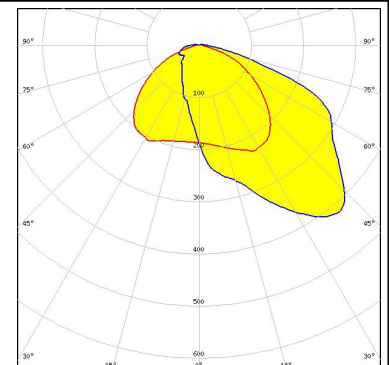
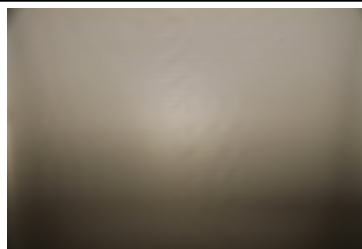
LED Soleriq S13  
FWHM Asymmetric  
Efficiency 93 %  
Peak intensity 0.530 cd/lm  
Required components:

#### OSRAM Opto Semiconductors

LED Soleriq S19  
FWHM Asymmetric  
Efficiency 93 %  
Peak intensity 0.490 cd/lm  
Required components:

#### SAMSUNG

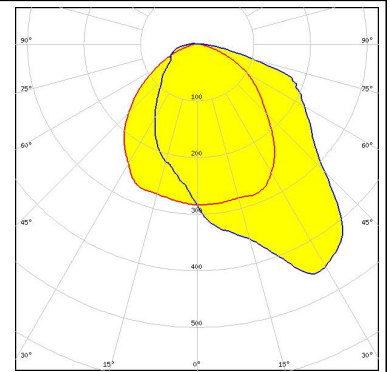
LED COB D Series LES 14.5 mm  
FWHM Asymmetric  
Efficiency 92 %  
Peak intensity 0.470 cd/lm  
Required components:



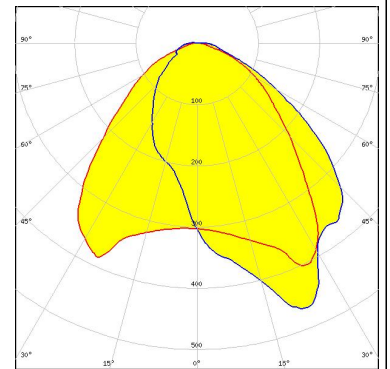
**PHOTOMETRIC DATA (MEASURED):**

**SAMSUNG**

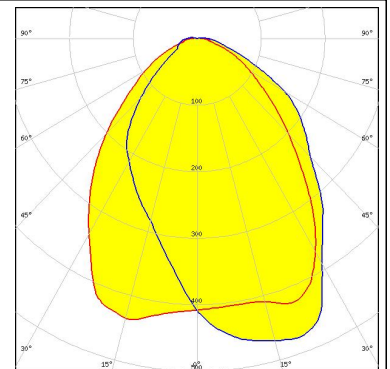
LED COB D Series LES 22 mm  
 FWHM Asymmetric  
 Efficiency 91 %  
 Peak intensity 0.500 cd/lm  
 Required components:



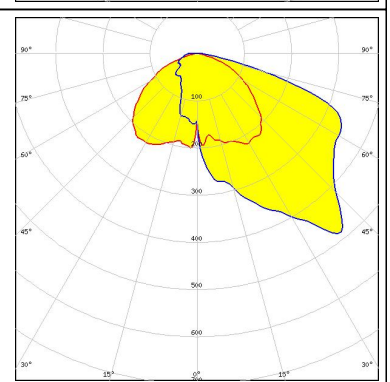
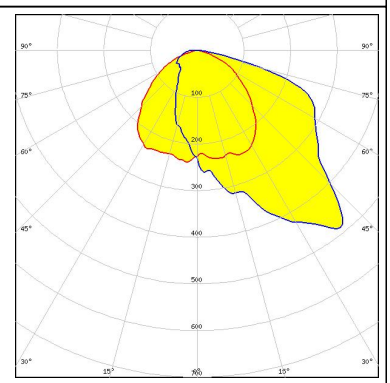
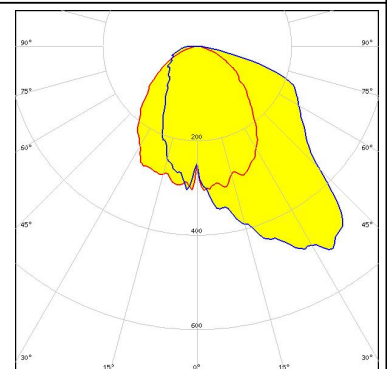
LED MJT COB LES 14.5  
 FWHM Asymmetric  
 Efficiency 91 %  
 Peak intensity 0.600 cd/lm  
 Required components:  
 Bender Wirth: 433 Typ Z1



LED MJT COB LES 22  
 FWHM Asymmetric  
 Efficiency 90 %  
 Peak intensity 0.480 cd/lm  
 Required components:  
 Bender Wirth: 431 Typ Z1



### PHOTOMETRIC DATA (SIMULATED):

<p>bridgelux.</p> <p>LED V10 Gen7            FWHM Asymmetric            Efficiency 94 %            Peak intensity 0.510 cd/lm            Required components:            Bender Wirth: 434 Typ Z1</p>	
<p>bridgelux.</p> <p>LED V13 Gen7            FWHM Asymmetric            Efficiency 96 %            Peak intensity 0.500 cd/lm            Required components:            Bender Wirth: 477 Typ Z1</p>	
<p>bridgelux.</p> <p>LED V18 Gen7            FWHM Asymmetric            Efficiency 94 %            Peak intensity 0.510 cd/lm            Required components:</p>	
<p>bridgelux.</p> <p>LED V22 Gen7            FWHM Asymmetric            Efficiency 94 %            Peak intensity 0.516 cd/lm            Required components:            Bender Wirth: 431 Typ Z1</p>	



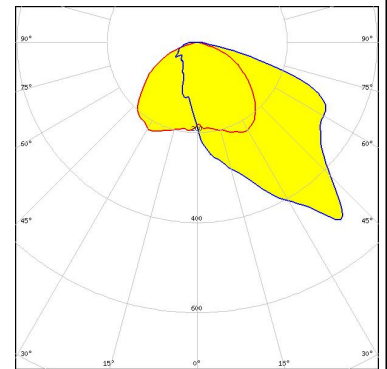
### PHOTOMETRIC DATA (SIMULATED):

bridgelux

LED VERO18  
FWHM Asymmetric  
Efficiency 91 %  
Peak intensity cd/lm  
Required components:

### CITIZEN

LED CLL03x/CLU03x  
FWHM Asymmetric  
Efficiency 94 %  
Peak intensity 0.520 cd/lm  
Required components:  
Bender Wirth: 433 Typ Z1

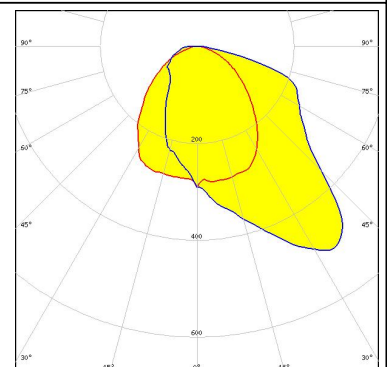


### CITIZEN

LED CLL03x/CLU03x  
FWHM Asymmetric  
Efficiency 93 %  
Peak intensity cd/lm  
Required components:

### CITIZEN

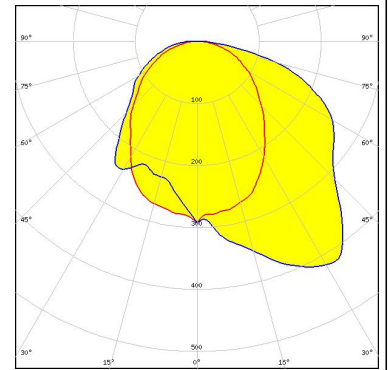
LED CLL04x/CLU04x  
FWHM Asymmetric  
Efficiency 93 %  
Peak intensity 0.500 cd/lm  
Required components:



### PHOTOMETRIC DATA (SIMULATED):

#### CITIZEN

LED CLL05x/CLU05x  
FWHM Asymmetric  
Efficiency 90 %  
Peak intensity 0.419 cd/lm  
Required components:

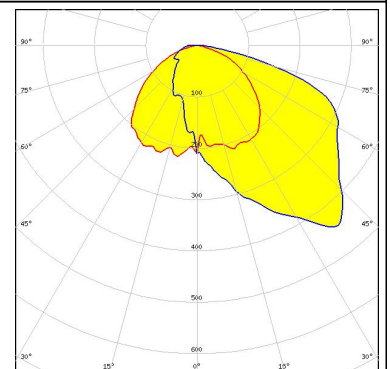


#### CREE

LED CXA/B 1830  
FWHM Asymmetric  
Efficiency 93 %  
Peak intensity cd/lm  
Required components:

#### CREE

LED CXA/B 25xx  
FWHM Asymmetric  
Efficiency 92 %  
Peak intensity 0.450 cd/lm  
Required components:



#### CREE

LED CXA/B 30xx  
FWHM Asymmetric  
Efficiency %  
Peak intensity cd/lm  
Required components:

### GENERAL INFORMATION:

NOTE: The typical beam angle will be changed by different color, chip size and chip position tolerance. The typical total beam angle is the full angle measured where the luminous intensity is half of the peak value.

Due to use of high power COB's with this product, special attention to proper thermal design is highly recommended. LEDiL has no liability for direct, indirect or consecutive damages arising from the LEDiL products being used outside of the recommended temperature range.

### MATERIALS:

As part of our continuous research and improvement processes, and to ensure the best possible quality and availability of our products, LEDiL reserves the right to change material grades without notice.

### PRODUCT DATA USER AGREEMENT AND DISCLAIMER:

The measured data in the provided downloadable LEDiL Product Datasheets and Mechanical 2D-Drawings is rounded and provided as reference for planning. LEDiL Oy's optical specifications have been verified by conducting performance testing of the products in accordance with the company's quality system. The reported data are averaged results of multiple measurements with typical variation. LEDiL Oy reserves the right to without prior notification make changes and improvements to its products.

LEDiL Oy assumes neither warranty, nor guarantee nor any other liability of any kind for the contents and correctness of the provided data. The provided data has been generated with highest diligence but the provided data may in reality not represent the complete possible variation range of all intrinsic parameters. Therefore, in certain cases a deviation from the provided data could occur.

LEDiL Oy reserves the right to undertake technical changes of its products without further notification which could lead to changes in the provided data. LEDiL Oy assumes no liability of any kind for the possible deviation from any provided data or any other damage resulting from the usage of the provided data.

The user agrees to this disclaimer and user agreement with the download or usage of the provided files.

#### LEDiL Oy

Joensuunkatu 13  
FI-24240 SALO  
Finland

#### LEDiL Inc.

228 West Page Street  
Suite D  
Sycamore IL 60178  
USA

#### Local sales and technical support

[www.ledil.com/  
where\\_to\\_buy](http://www.ledil.com/where_to_buy)

#### Shipping locations

Salo, Finland  
Hong Kong, China

#### Distribution Partners

[www.ledil.com/  
where\\_to\\_buy](http://www.ledil.com/where_to_buy)