



Chipsmall Limited consists of a professional team with an average of over 10 year of expertise in the distribution of electronic components. Based in Hongkong, we have already established firm and mutual-benefit business relationships with customers from,Europe,America and south Asia,supplying obsolete and hard-to-find components to meet their specific needs.

With the principle of “Quality Parts,Customers Priority,Honest Operation,and Considerate Service”,our business mainly focus on the distribution of electronic components. Line cards we deal with include Microchip,ALPS,ROHM,Xilinx,Pulse,ON,Everlight and Freescale. Main products comprise IC,Modules,Potentiometer,IC Socket,Relay,Connector.Our parts cover such applications as commercial,industrial, and automotives areas.

We are looking forward to setting up business relationship with you and hope to provide you with the best service and solution. Let us make a better world for our industry!



## Contact us

Tel: +86-755-8981 8866 Fax: +86-755-8427 6832

Email & Skype: info@chipsmall.com Web: www.chipsmall.com

Address: A1208, Overseas Decoration Building, #122 Zhenhua RD., Futian, Shenzhen, China

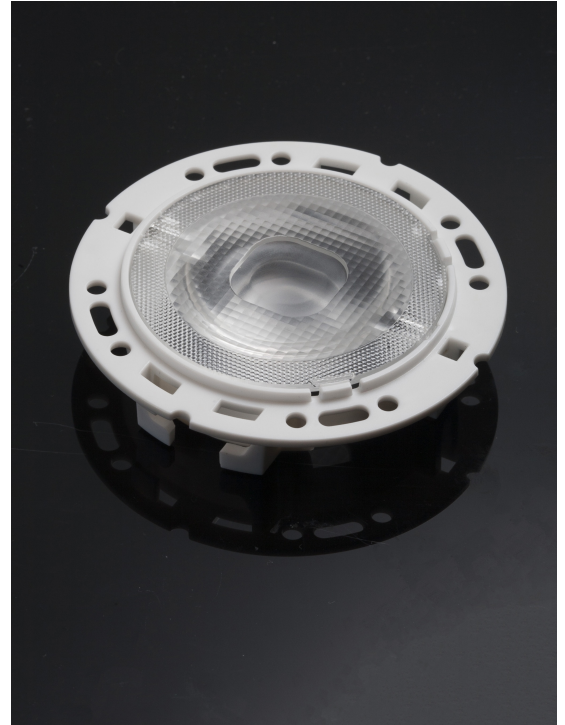


## RONDA-REC-60

~60° 60° rectangular beam with holder A  
compatible with 3rd party connectors from TE,  
Bender Wirth and IDEAL

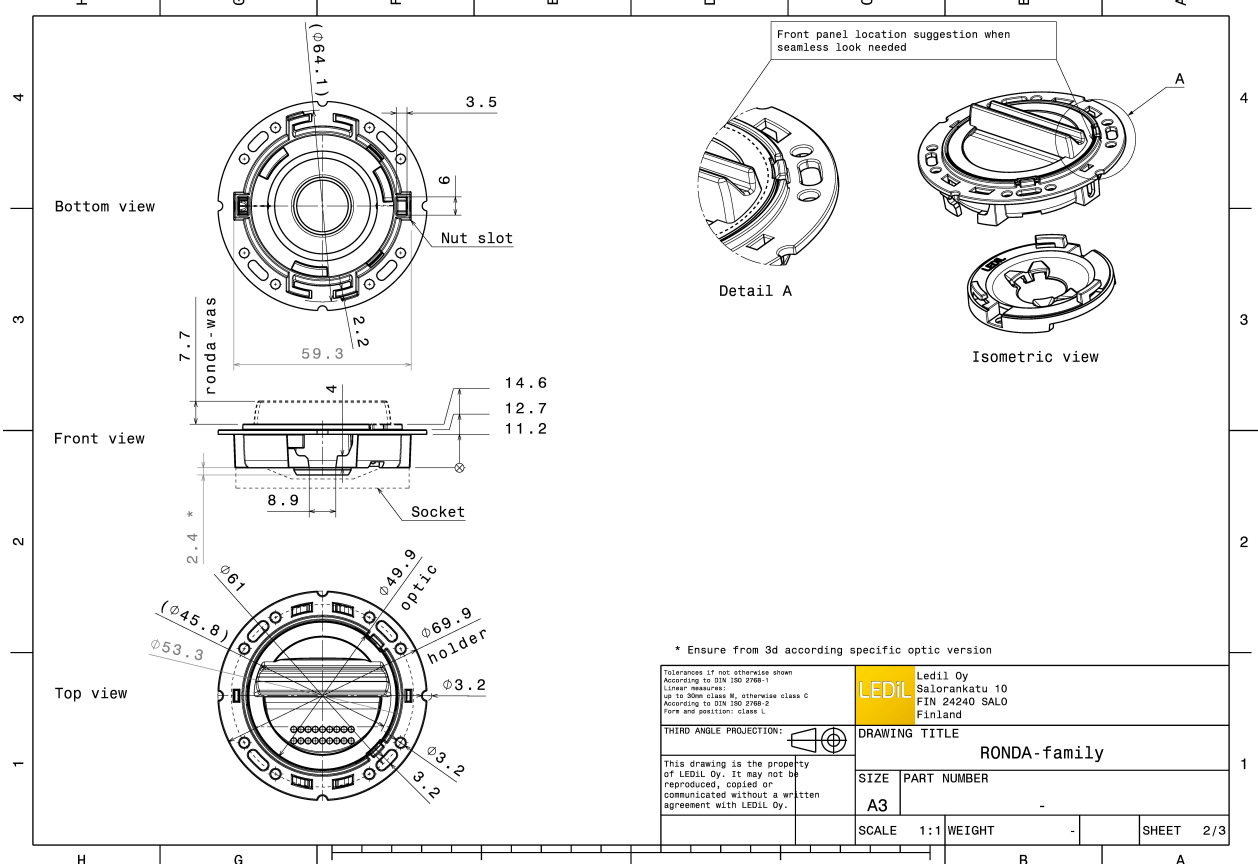
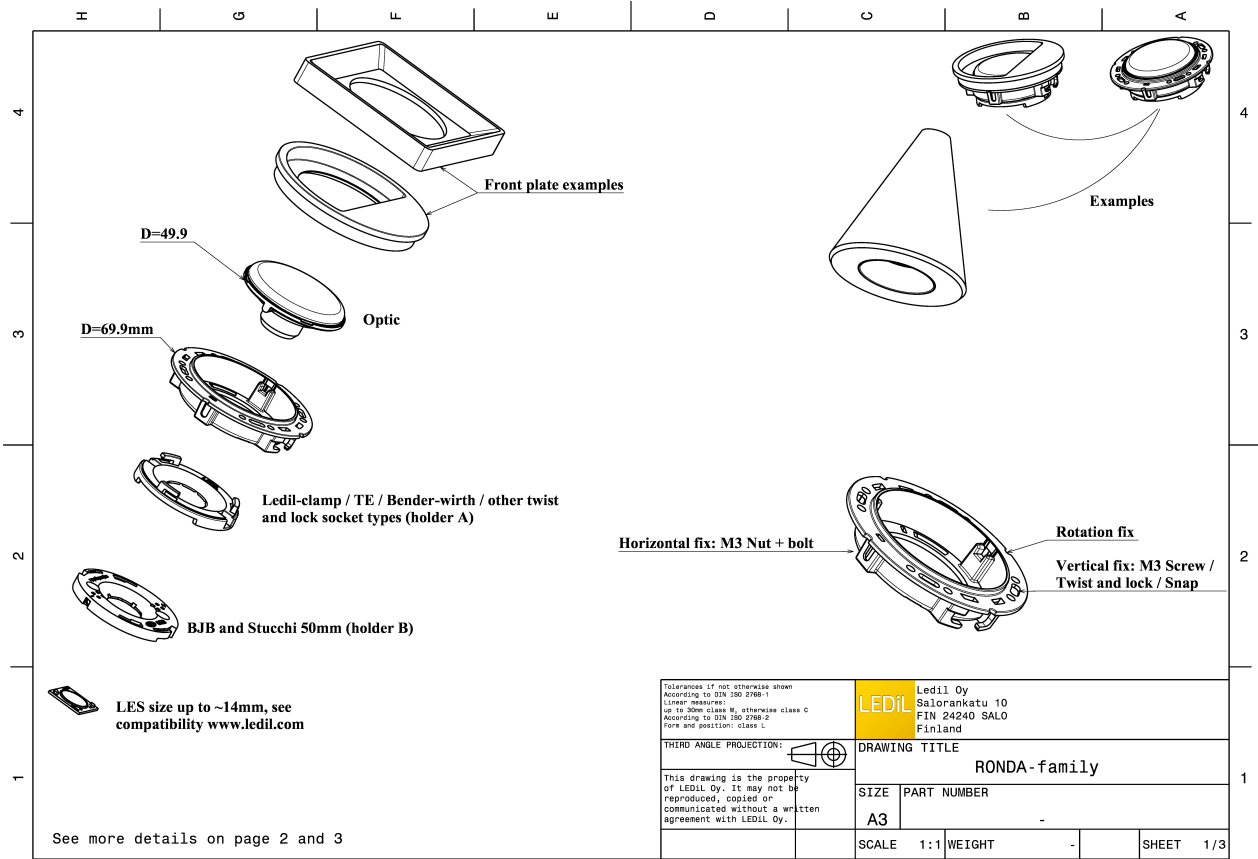
### TECHNICAL SPECIFICATIONS:

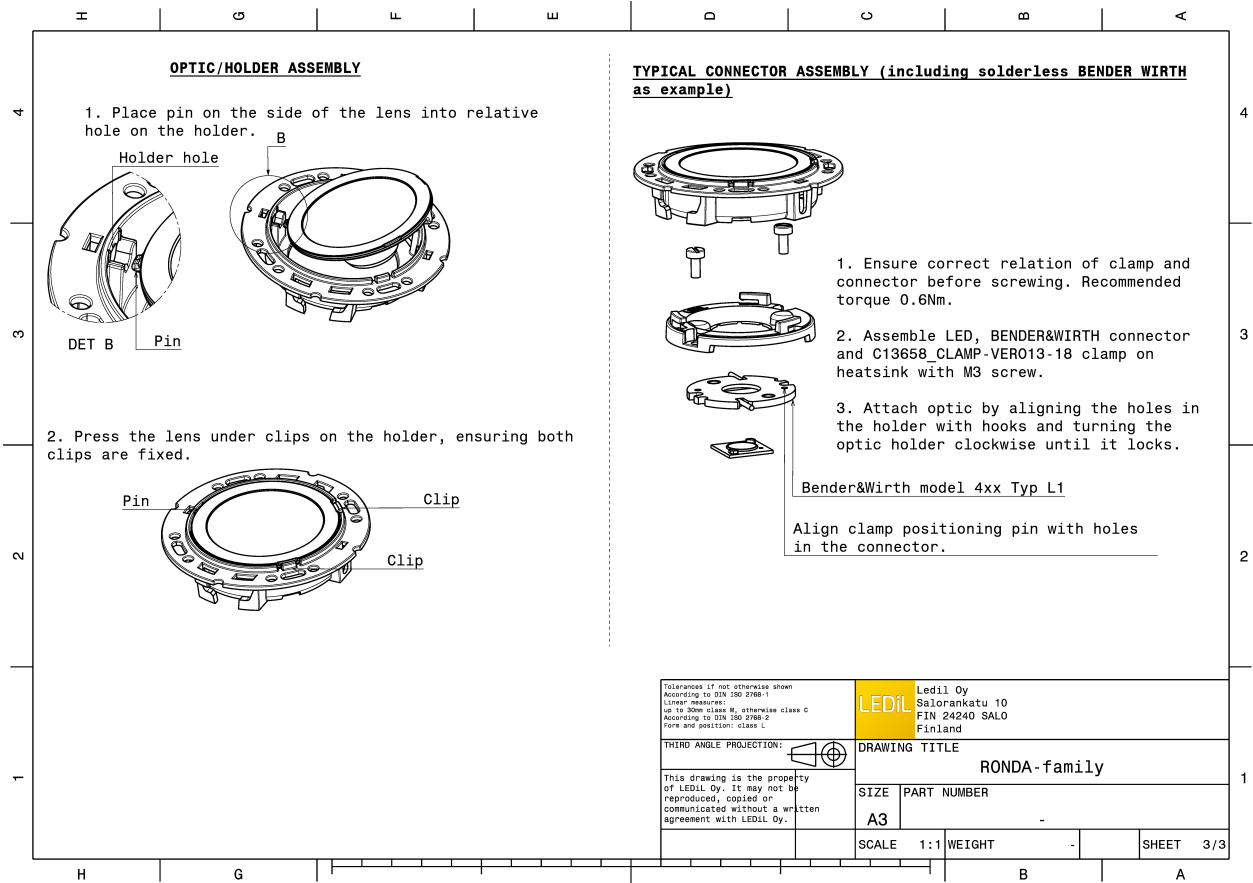
Dimensions	Ø 69.9 mm
Height	14.6 mm
Fastening	socket
Colour	white
Box size	
Box weight	0 kg
Quantity in Box	420 pcs
ROHS compliant	yes ⓘ





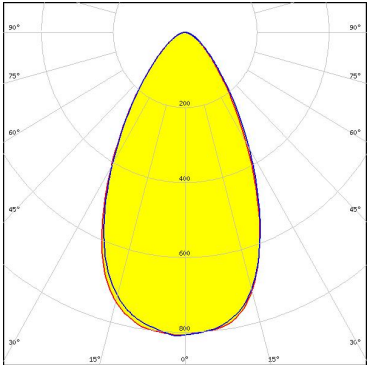


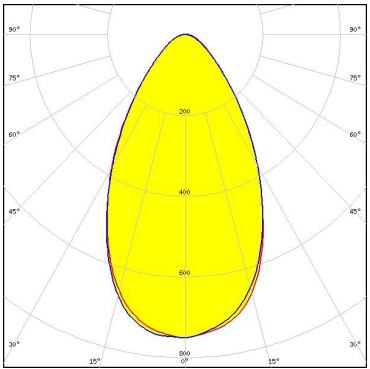

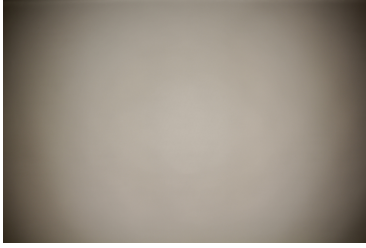
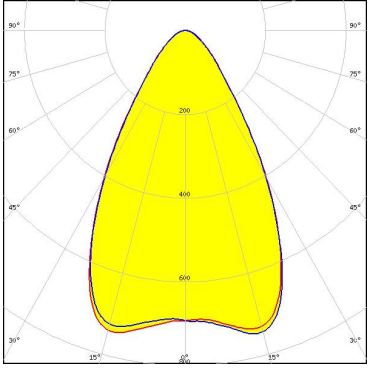

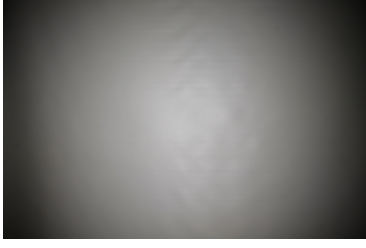
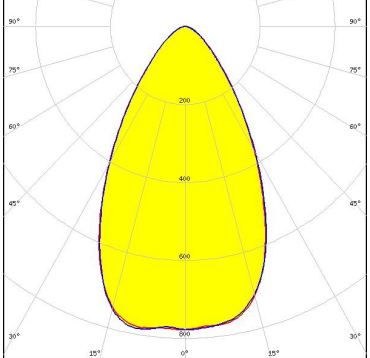
### MATERIAL SPECIFICATIONS:

Component	Type	Material	Colour
RONDA-REC-60	Lens	PMMA	clear
RONDA-HLD-A	Holder	PC	white

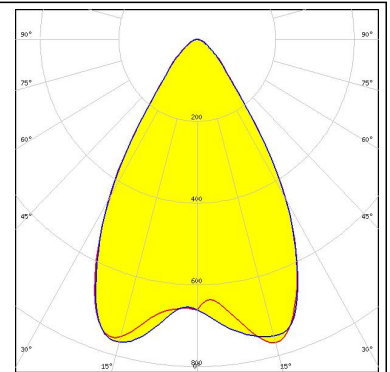
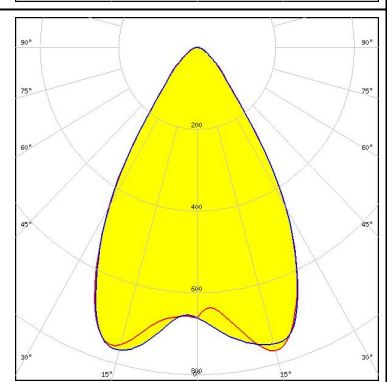
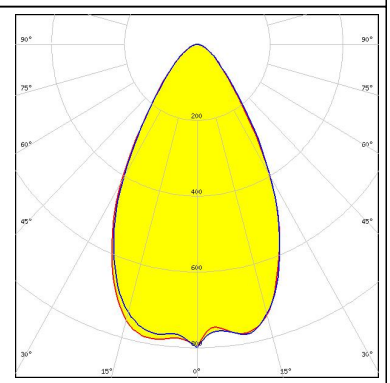
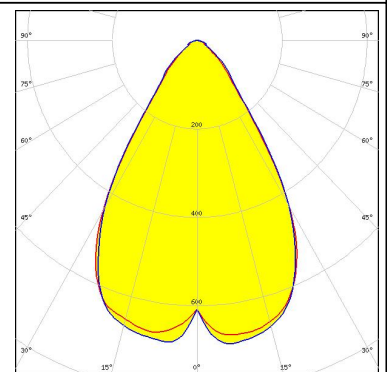




#### PHOTOMETRIC DATA (MEASURED):

<p> LED            Vero SE 13</p> <p>FWHM            58.0°</p> <p>Efficiency        90 %</p> <p>Peak intensity   0.800 cd/lm</p> <p>Required components:</p> <p>          C16402_CLAMP-VEROSE-13-18</p>		
<p> LED            CMA1840</p> <p>FWHM            60.0°</p> <p>Efficiency        90 %</p> <p>Peak intensity   0.750 cd/lm</p> <p>Required components:</p> <p>          C14123_CLAMP-CXA15-18</p>		
<p> LED            CXA/B 15xx</p> <p>FWHM            63.0°</p> <p>Efficiency        91 %</p> <p>Peak intensity   0.750 cd/lm</p> <p>Required components:</p> <p>          C14123_CLAMP-CXA15-18</p>		
<p> LED            CXA/B 1816 &amp; CXA/B 1820 &amp; CXA 1850</p> <p>FWHM            60.0°</p> <p>Efficiency        91 %</p> <p>Peak intensity   0.800 cd/lm</p> <p>Required components:</p> <p>          LEDiL: C14123_CLAMP-CXA15-18</p>		

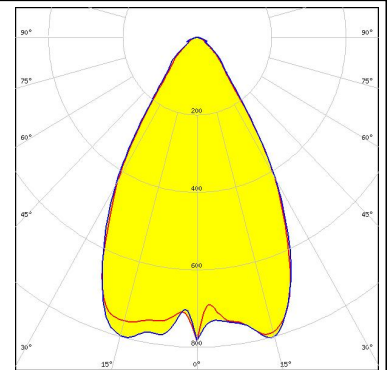
#### PHOTOMETRIC DATA (SIMULATED):

<p>bridgelux.</p> <p>LED H9</p> <p>FWHM 63.0°</p> <p>Efficiency 91 %</p> <p>Peak intensity cd/lm</p> <p>Required components: C14123_CLAMP-CXA15-18</p>	
<p>bridgelux.</p> <p>LED H9</p> <p>FWHM 63.0°</p> <p>Efficiency 91 %</p> <p>Peak intensity cd/lm</p> <p>Required components: C13658_CLAMP-VERO13-18 Bender Wirth: 441 Typ L1</p>	
<p>bridgelux.</p> <p>LED V13 Gen7</p> <p>FWHM 60.0°</p> <p>Efficiency 87 %</p> <p>Peak intensity 0.800 cd/lm</p> <p>Required components: C13658_CLAMP-VERO13-18 Bender Wirth: 477 Typ L1</p>	
<p><b>CITIZEN</b></p> <p>LED CLU700/701</p> <p>FWHM 65.0°</p> <p>Efficiency 90 %</p> <p>Peak intensity cd/lm</p> <p>Required components: C13658_CLAMP-VERO13-18 Bender Wirth: 434 Typ L1</p>	

#### PHOTOMETRIC DATA (SIMULATED):

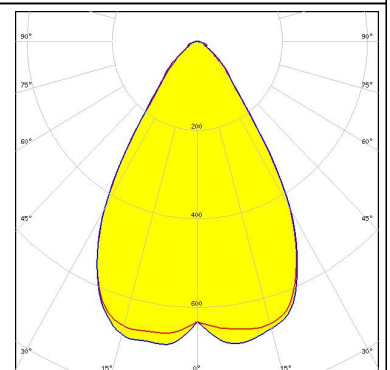
#### CITIZEN

LED CLU710/711  
FWHM 61.0°  
Efficiency 90 %  
Peak intensity cd/lm  
Required components:  
C13658\_CLAMP-VERO13-18  
Bender Wirth: 470 Typ L1



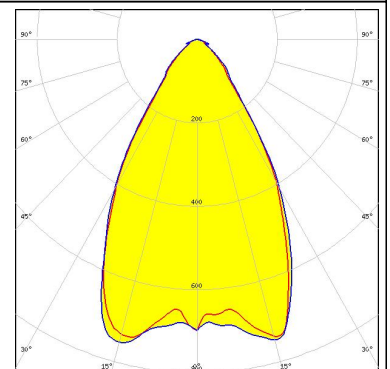
#### CREE

LED CXA/B 13xx  
FWHM 65.0°  
Efficiency 90 %  
Peak intensity cd/lm  
Required components:  
C13658\_CLAMP-VERO13-18  
Bender Wirth: 448 Typ L1



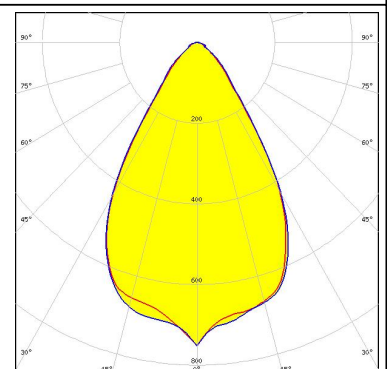
#### CREE

LED CXA/B 15xx  
FWHM 62.0°  
Efficiency 89 %  
Peak intensity cd/lm  
Required components:  
C13658\_CLAMP-VERO13-18  
Bender Wirth: 441 Typ L1



#### LUMILEDS

LED LUXEON CoB 1202s  
FWHM 61.0°  
Efficiency 90 %  
Peak intensity cd/lm  
Required components:  
C13658\_CLAMP-VERO13-18  
Bender Wirth: 452 Typ L1



#### PHOTOMETRIC DATA (SIMULATED):



LED NSCxL036A

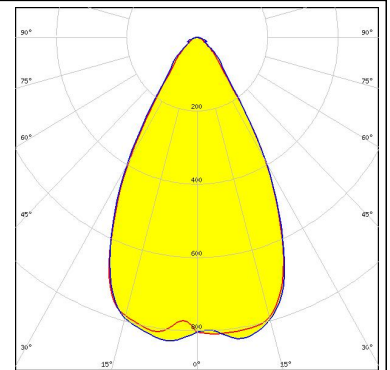
FWHM 58.0°

Efficiency 89 %

Peak intensity 0.830 cd/lm

Required components:

TE: 2213382-2 + OPTIC CLIP Z50 TYPE1 2213194-1



LED Mini Zenigata (GW6BM)

FWHM 60.0°

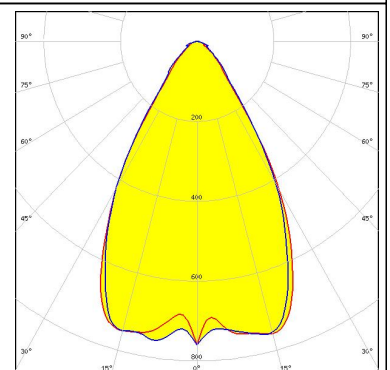
Efficiency %

Peak intensity cd/lm

Required components:

C13658\_CLAMP-VERO13-18

Bender Wirth: 452 Typ L1



LED SLE G6 LES15

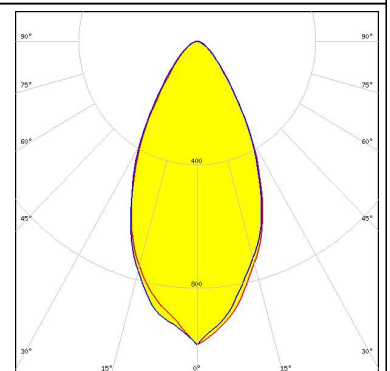
FWHM 51.0°

Efficiency 85 %

Peak intensity 0.980 cd/lm

Required components:

TE: 2213254-2 + OPTIC CLIP Z50 TYPE1 2213194-1





### GENERAL INFORMATION:

NOTE: The typical beam angle will be changed by different color, chip size and chip position tolerance. The typical total beam angle is the full angle measured where the luminous intensity is half of the peak value.

Due to use of high power COB's with this product, special attention to proper thermal design is highly recommended. LEDiL has no liability for direct, indirect or consecutive damages arising from the LEDiL products being used outside of the recommended temperature range.

### MATERIALS:

As part of our continuous research and improvement processes, and to ensure the best possible quality and availability of our products, LEDiL reserves the right to change material grades without notice.

### PRODUCT DATA USER AGREEMENT AND DISCLAIMER:

The measured data in the provided downloadable LEDiL Product Datasheets and Mechanical 2D-Drawings is rounded and provided as reference for planning. LEDiL Oy's optical specifications have been verified by conducting performance testing of the products in accordance with the company's quality system. The reported data are averaged results of multiple measurements with typical variation. LEDiL Oy reserves the right to without prior notification make changes and improvements to its products.

LEDiL Oy assumes neither warranty, nor guarantee nor any other liability of any kind for the contents and correctness of the provided data. The provided data has been generated with highest diligence but the provided data may in reality not represent the complete possible variation range of all intrinsic parameters. Therefore, in certain cases a deviation from the provided data could occur.

LEDiL Oy reserves the right to undertake technical changes of its products without further notification which could lead to changes in the provided data. LEDiL Oy assumes no liability of any kind for the possible deviation from any provided data or any other damage resulting from the usage of the provided data.

The user agrees to this disclaimer and user agreement with the download or usage of the provided files.

#### LEDiL Oy

Joensuunkatu 13  
FI-24240 SALO  
Finland

#### LEDiL Inc.

228 West Page Street  
Suite D  
Sycamore IL 60178  
USA

#### Local sales and technical support

[www.ledil.com/where\\_to\\_buy](http://www.ledil.com/where_to_buy)

#### Shipping locations

Salo, Finland  
Hong Kong, China

#### Distribution Partners

[www.ledil.com/where\\_to\\_buy](http://www.ledil.com/where_to_buy)