



Chipsmall Limited consists of a professional team with an average of over 10 year of expertise in the distribution of electronic components. Based in Hongkong, we have already established firm and mutual-benefit business relationships with customers from,Europe,America and south Asia,supplying obsolete and hard-to-find components to meet their specific needs.

With the principle of “Quality Parts,Customers Priority,Honest Operation,and Considerate Service”,our business mainly focus on the distribution of electronic components. Line cards we deal with include Microchip,ALPS,ROHM,Xilinx,Pulse,ON,Everlight and Freescale. Main products comprise IC,Modules,Potentiometer,IC Socket,Relay,Connector.Our parts cover such applications as commercial,industrial, and automotives areas.

We are looking forward to setting up business relationship with you and hope to provide you with the best service and solution. Let us make a better world for our industry!



## Contact us

Tel: +86-755-8981 8866 Fax: +86-755-8427 6832

Email & Skype: info@chipsmall.com Web: www.chipsmall.com

Address: A1208, Overseas Decoration Building, #122 Zhenhua RD., Futian, Shenzhen, China



## RONDA-REC-90

~80° rectangular beam with holder B compatible with 3rd party connectors from BJB, IDEAL and Stucchi

### TECHNICAL SPECIFICATIONS:

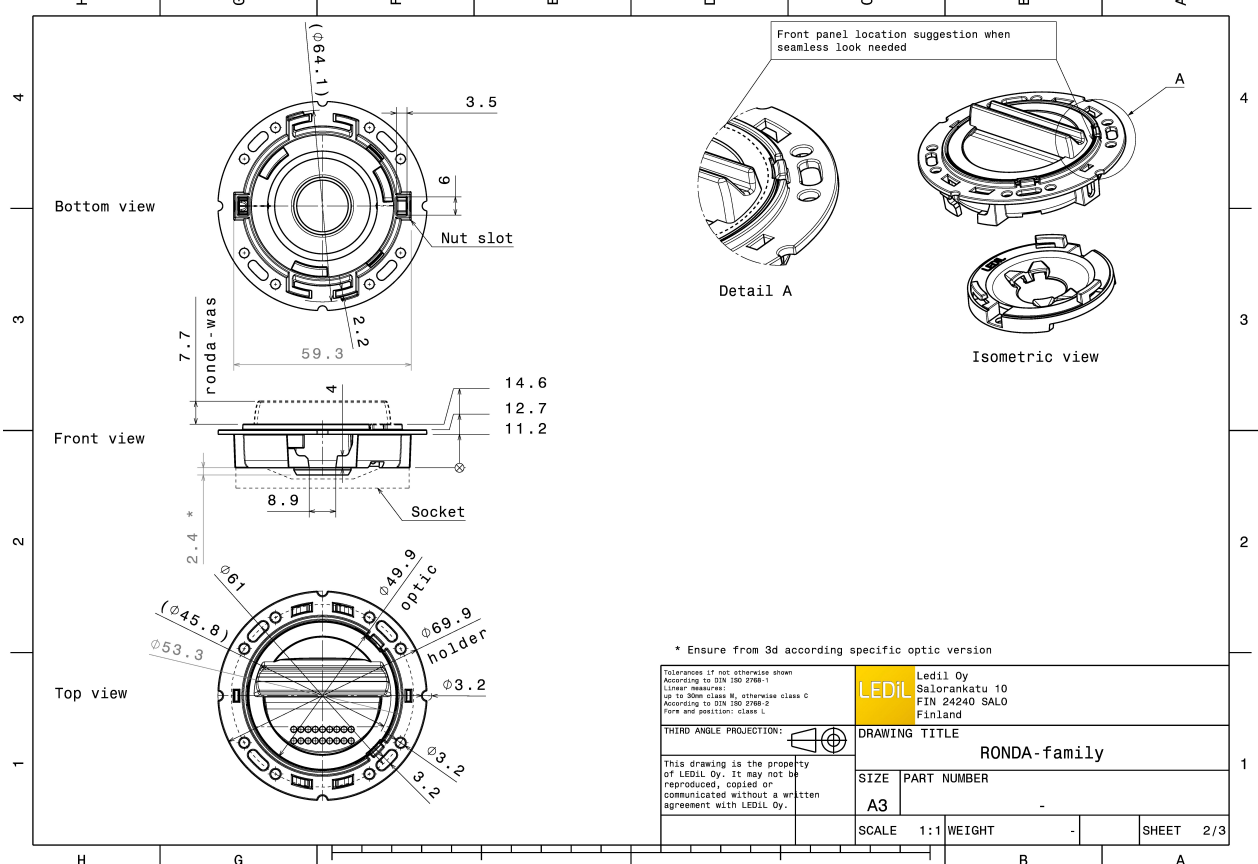
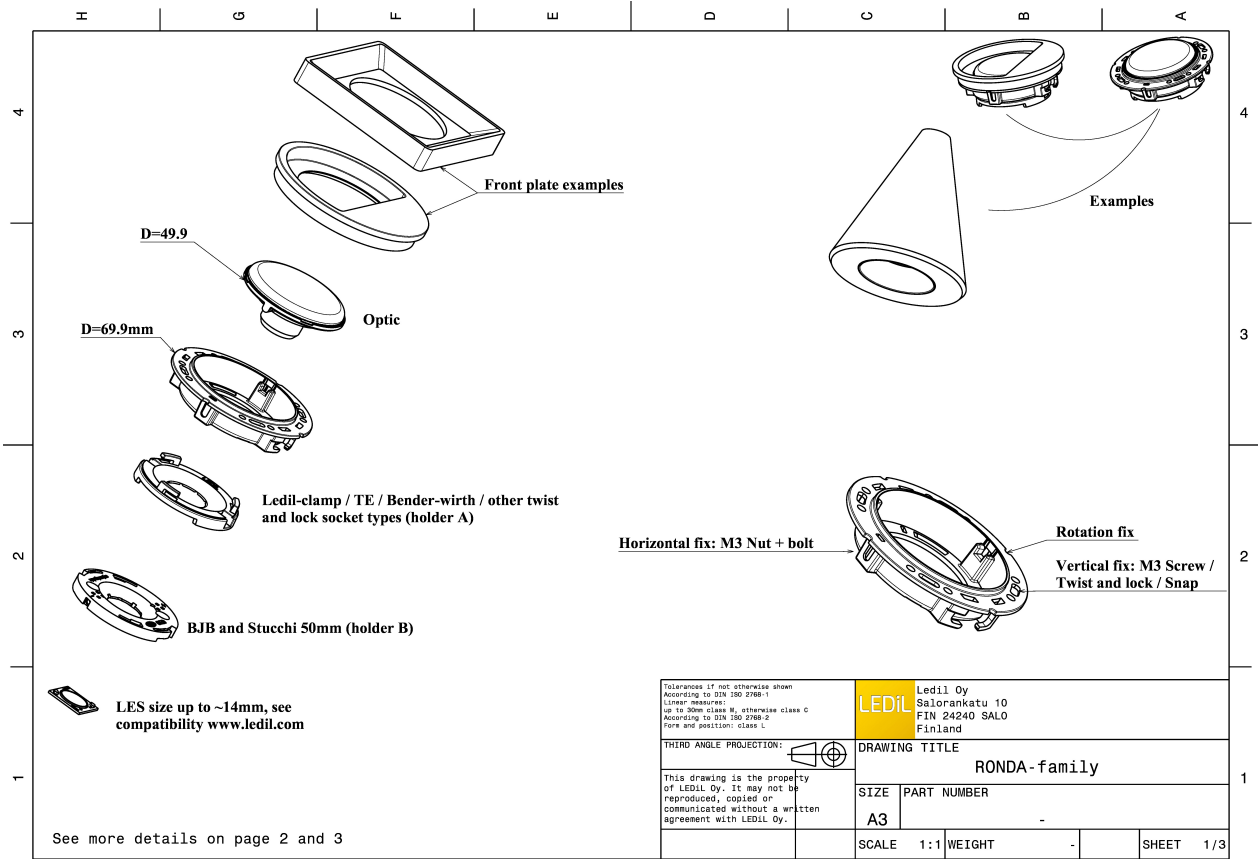
Dimensions	Ø 69.9 mm
Height	14.6 mm
Fastening	socket
Colour	white
Box size	
Box weight	0 kg
Quantity in Box	420 pcs
ROHS compliant	yes ⓘ

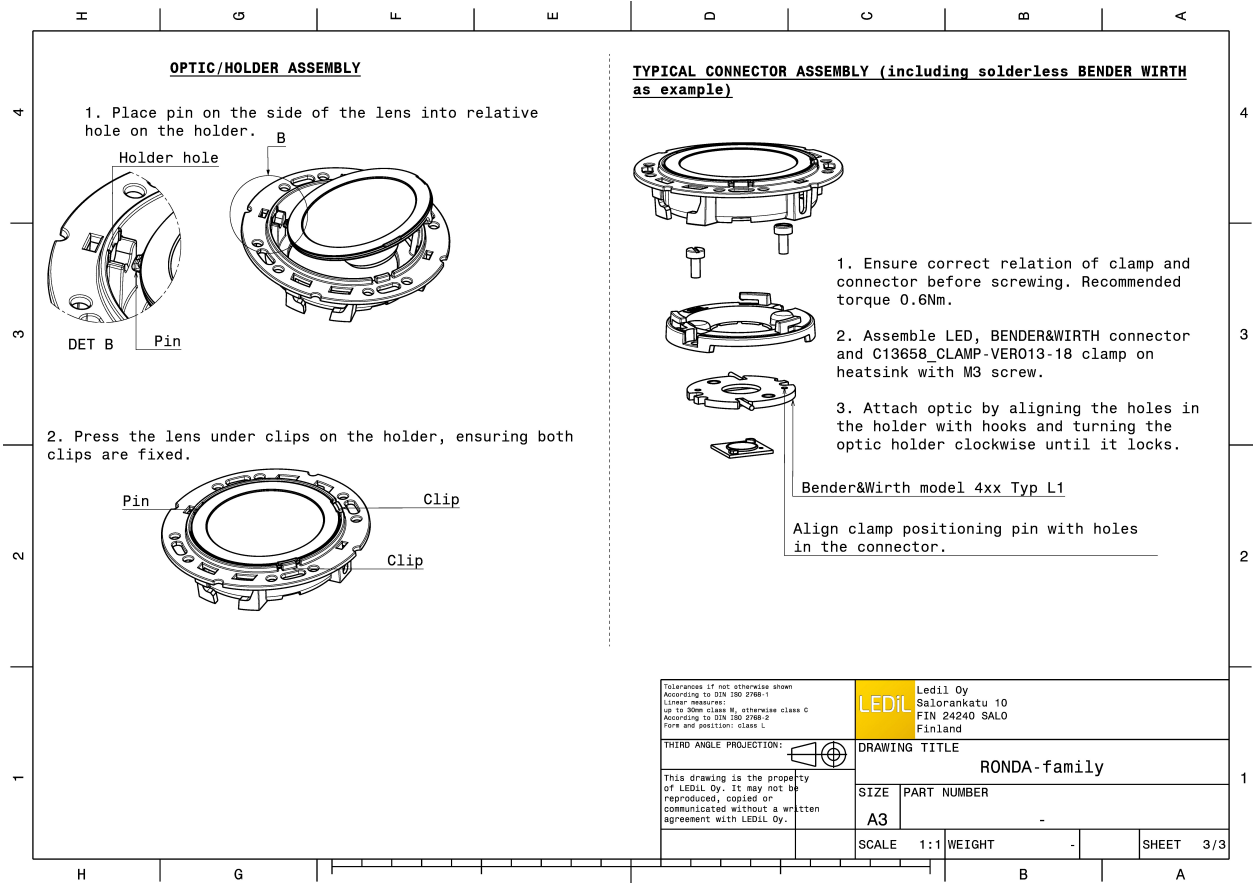


### MATERIAL SPECIFICATIONS:

Component	Type	Material	Colour
RONDA-REC-90	Lens	PMMA	clear
RONDA-HLD-A	Holder	PC	white

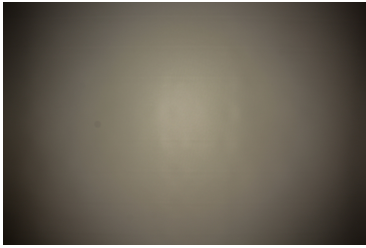
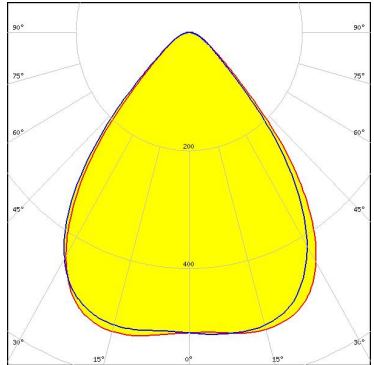

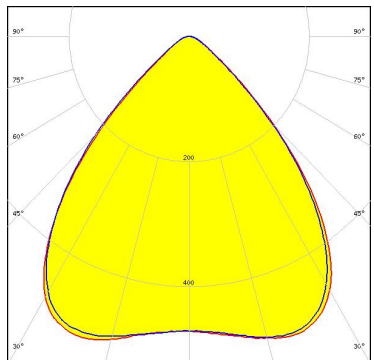

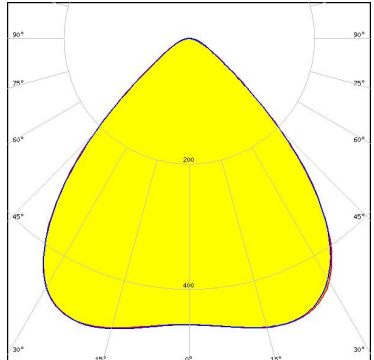
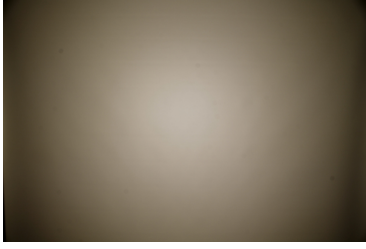
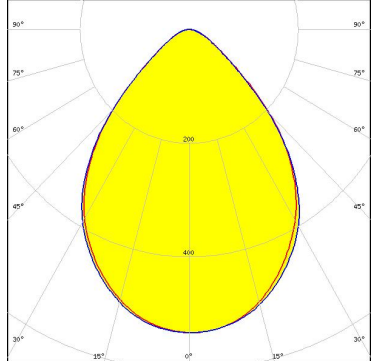








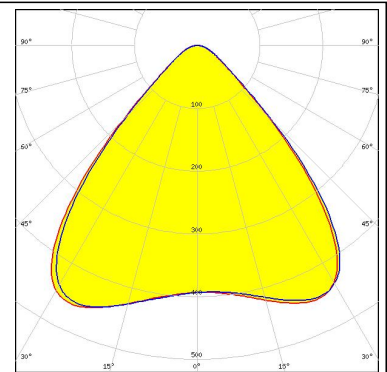
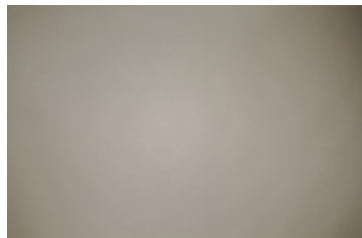
#### PHOTOMETRIC DATA (MEASURED):

<p>bridgelux.</p> <p>LED V13 Gen7</p> <p>FWHM 80.0°</p> <p>Efficiency 87 %</p> <p>Peak intensity 0.530 cd/lm</p> <p>Required components: TE: 2213254-2 + OPTIC CLIP Z50 TYPE1 2213194-1</p>		
<p>bridgelux.</p> <p>LED Vero SE 13</p> <p>FWHM 87.0°</p> <p>Efficiency 91 %</p> <p>Peak intensity 0.500 cd/lm</p> <p>Required components: C16402_CLAMP-VEROSE-13-18</p>		
<p>bridgelux.</p> <p>LED VERO13</p> <p>FWHM 88.0°</p> <p>Efficiency 91 %</p> <p>Peak intensity 0.490 cd/lm</p> <p>Required components: C13658_CLAMP-VERO13-18</p>		
<p>bridgelux.</p> <p>LED VERO18</p> <p>FWHM 81.0°</p> <p>Efficiency 89 %</p> <p>Peak intensity 0.530 cd/lm</p> <p>Required components: C13658_CLAMP-VERO13-18</p>		

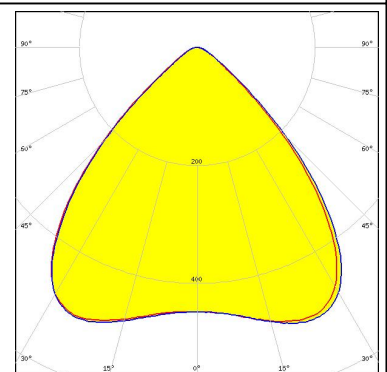
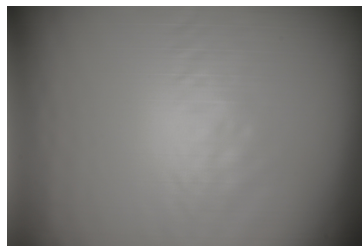
#### PHOTOMETRIC DATA (MEASURED):



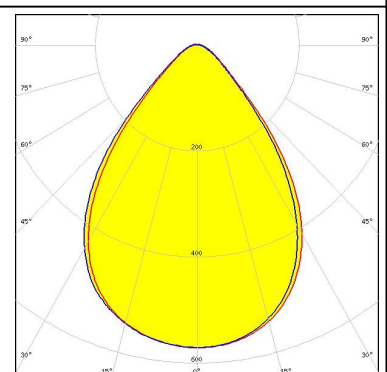
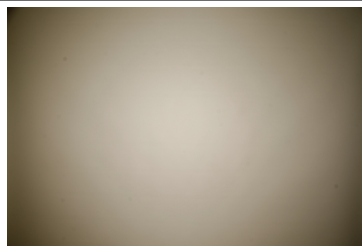
LED CXA/B 15xx  
 FWHM 87.0°  
 Efficiency 91 %  
 Peak intensity 0.500 cd/lm  
 Required components:  
 C14123\_CLAMP-CXA15-18  
 Bender Wirth: 434 Typ L1



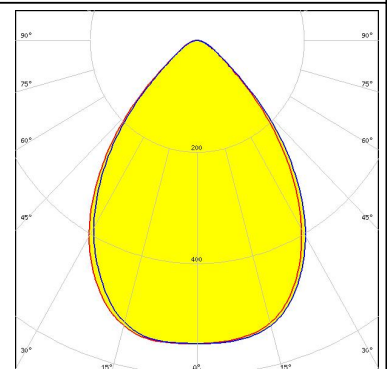
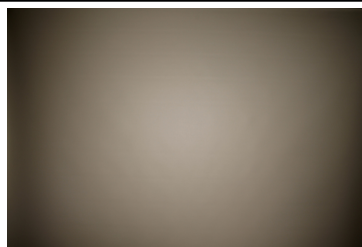
LED CXA/B 1816 & CXA/B 1820 & CXA 1850  
 FWHM 89.0°  
 Efficiency 92 %  
 Peak intensity 0.510 cd/lm  
 Required components:  
 LEDiL: C14123\_CLAMP-CXA15-18




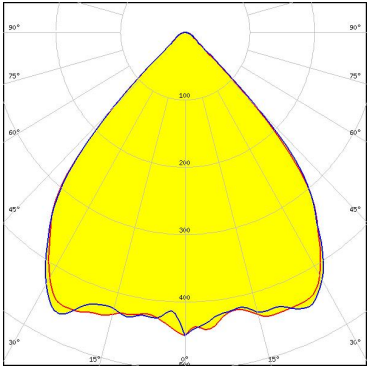

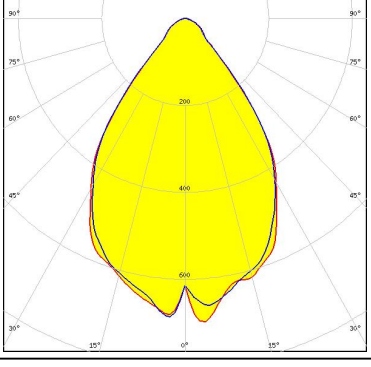


LED Fortimo SLM L15 Standard  
 FWHM 77.0°  
 Efficiency 86 %  
 Peak intensity 0.570 cd/lm  
 Required components:  
 TE: OPTIC CLIP Z50 TYPE1 2213194-1



LED MJT COB LES 14.5  
 FWHM 78.0°  
 Efficiency 87 %  
 Peak intensity 0.500 cd/lm  
 Required components:  
 TE: 2213254-2 + OPTIC CLIP Z50 TYPE1 2213194-1



#### PHOTOMETRIC DATA (SIMULATED):

 LED V13 Gen7 FWHM 86.0 + 75.0° Efficiency 79 % Peak intensity 0.460 cd/lm Required components: Bender Wirth: 477 Typ L1	
 LED V13 Gen7 FWHM 70.0° Efficiency 85 % Peak intensity 0.710 cd/lm Required components: IDEAL: 50-2103CT + 50-2100AN	
 LED CXA/B 1816 & CXA/B 1820 & CXA 1850 FWHM 90.0° Efficiency 90 % Peak intensity 0.000 cd/lm Required components: C14123_CLAMP-CXA15-18	
 LED CXA/B 1816 & CXA/B 1820 & CXA 1850 FWHM 85.0° Efficiency 90 % Peak intensity 0.000 cd/lm Required components: TE: 2213401-2 + OPTIC CLIP Z50 TYPE1 2213194-1	



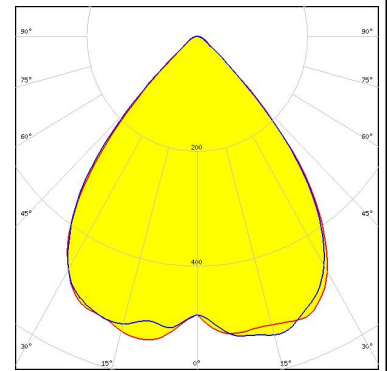
## PHOTOMETRIC DATA (SIMULATED):

### CREE

LED CXA/B 1830  
FWHM 90.0°  
Efficiency 90 %  
Peak intensity 0.000 cd/lm  
Required components:  
C14123\_CLAMP-CXA15-18

### TRIDONIC

LED SLE G6 LES15  
FWHM 82.0 + 76.0°  
Efficiency 86 %  
Peak intensity 0.540 cd/lm  
Required components:  
TE: 2213254-2 + OPTIC CLIP Z50 TYPE1 2213194-1



### GENERAL INFORMATION:

NOTE: The typical beam angle will be changed by different color, chip size and chip position tolerance. The typical total beam angle is the full angle measured where the luminous intensity is half of the peak value.

Due to use of high power COB's with this product, special attention to proper thermal design is highly recommended. LEDiL has no liability for direct, indirect or consecutive damages arising from the LEDiL products being used outside of the recommended temperature range.

### MATERIALS:

As part of our continuous research and improvement processes, and to ensure the best possible quality and availability of our products, LEDiL reserves the right to change material grades without notice.

### PRODUCT DATA USER AGREEMENT AND DISCLAIMER:

The measured data in the provided downloadable LEDiL Product Datasheets and Mechanical 2D-Drawings is rounded and provided as reference for planning. LEDiL Oy's optical specifications have been verified by conducting performance testing of the products in accordance with the company's quality system. The reported data are averaged results of multiple measurements with typical variation. LEDiL Oy reserves the right to without prior notification make changes and improvements to its products.

LEDiL Oy assumes neither warranty, nor guarantee nor any other liability of any kind for the contents and correctness of the provided data. The provided data has been generated with highest diligence but the provided data may in reality not represent the complete possible variation range of all intrinsic parameters. Therefore, in certain cases a deviation from the provided data could occur.

LEDiL Oy reserves the right to undertake technical changes of its products without further notification which could lead to changes in the provided data. LEDiL Oy assumes no liability of any kind for the possible deviation from any provided data or any other damage resulting from the usage of the provided data.

The user agrees to this disclaimer and user agreement with the download or usage of the provided files.

#### LEDiL Oy

Joensuunkatu 13  
FI-24240 SALO  
Finland

#### LEDiL Inc.

228 West Page Street  
Suite D  
Sycamore IL 60178  
USA

#### Local sales and technical support

[www.ledil.com/where\\_to\\_buy](http://www.ledil.com/where_to_buy)

#### Shipping locations

Salo, Finland  
Hong Kong, China

#### Distribution Partners

[www.ledil.com/where\\_to\\_buy](http://www.ledil.com/where_to_buy)