



Chipsmall Limited consists of a professional team with an average of over 10 year of expertise in the distribution of electronic components. Based in Hongkong, we have already established firm and mutual-benefit business relationships with customers from,Europe,America and south Asia,supplying obsolete and hard-to-find components to meet their specific needs.

With the principle of “Quality Parts,Customers Priority,Honest Operation,and Considerate Service”,our business mainly focus on the distribution of electronic components. Line cards we deal with include Microchip,ALPS,ROHM,Xilinx,Pulse,ON,Everlight and Freescale. Main products comprise IC,Modules,Potentiometer,IC Socket,Relay,Connector.Our parts cover such applications as commercial,industrial, and automotives areas.

We are looking forward to setting up business relationship with you and hope to provide you with the best service and solution. Let us make a better world for our industry!



Contact us

Tel: +86-755-8981 8866 Fax: +86-755-8427 6832

Email & Skype: info@chipsmall.com Web: www.chipsmall.com

Address: A1208, Overseas Decoration Building, #122 Zhenhua RD., Futian, Shenzhen, China



High performance EMC/EMI filter



- | Rated currents from 3 to 6 A
- | Exceptional differential and common-mode attenuation
- | UL-rated materials
- | Optional medical versions (B type)



Performance indicators



Technical specifications

Maximum continuous operating voltage	250 VAC, 50/60 Hz
Operating frequency	dc to 400 Hz
Rated currents	3 to 6 A @ 40 °C max.
High potential test voltage	P → PE 2000 VAC for 2 sec P → N 1100 VDC for 2 sec
Temperature range (operation and storage)	-25 °C to +100 °C (25/100/21)
Flammability corresponding to	UL 94 V-2 or better
Design corresponding to	UL 1283, CSA 22.2 No. 8 1986, IEC/EN 60939
MTBF @ 40°C/230V (Mil-HB-217F)	2,400,000 hours

Approvals



Features and benefits

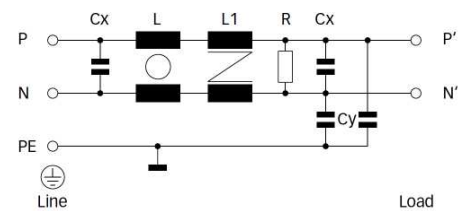
- | FN 2360 filters are designed for easy and fast chassis mounting
- | FN 2010 filters have a perfect performance/size ratio
- | All filters provide a very high differential and common-mode attenuation performance, based on chokes with high saturation resistance and excellent thermal behavior
- | Faston terminal connection with additional spade solder possibility
- | Optional medical versions (B type)
- | Custom-specific versions on request

Typical applications

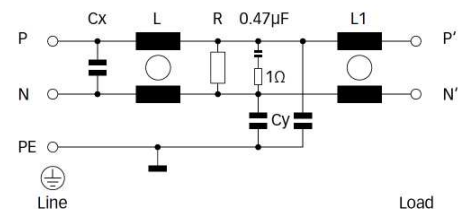
- | Electrical and electronic equipment
- | Consumer goods
- | Medical equipment
- | Power supplies
- | Office automation equipment
- | Datacom equipment

Typical electrical schematic


3A types



6A types



Filter selection table

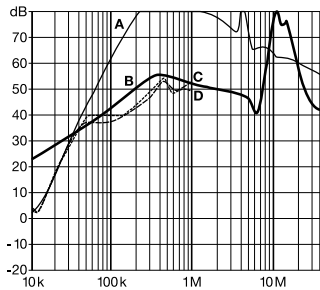
Filter	Rated current @ 40 °C (25 °C)	Leakage current* @ 230 VAC/50 Hz	Inductance		Capacitance		Resistance R	Input/Output connections	Weight
			L	L1	Cx	Cy			
	[A]	[mA]	[mH]	[mH]	[μF]	[nF]	[MΩ]		[g]
FN 2360W-3-06	3 (3,35)	0.52	32.3	0.4	0.47	3	1	-06	300
FN 2360X-6-06	6 (6.7)	0.7	48.2	1.7	1.5	4	1	-06	500
FN 2360B-3-06	3 (3,35)	0.004	32.3	0.4	0.47		1	-06	300
FN 2360B-6-06	6 (6.7)	0.004	48.2	1.7	1.5		1	-06	500

* Maximum leakage under normal operating conditions. Note: if the neutral line is interrupted, worst case leakage could reach twice this level.

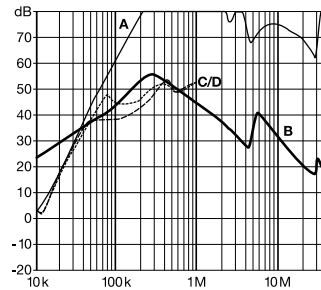
Typical filter attenuation

Per CISPR 17; A = 50 Ω/50 Ω sym; B = 50 Ω/50 Ω asym; C = 0.1 Ω/100 Ω sym; D = 100 Ω/0.1 Ω sym

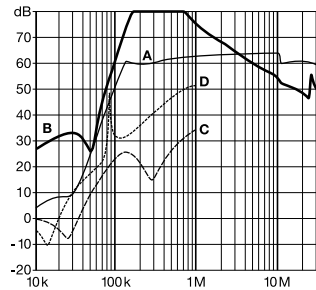
3 A types (W types)



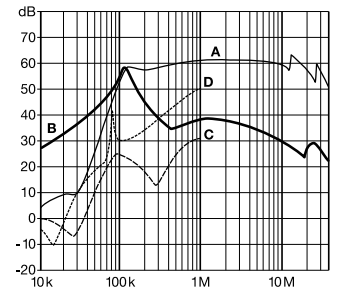
3 A types (B types)



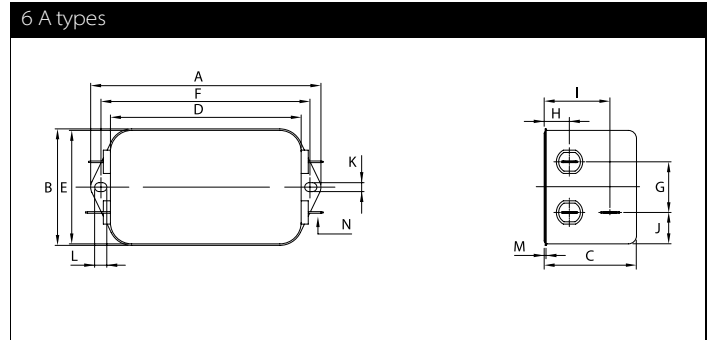
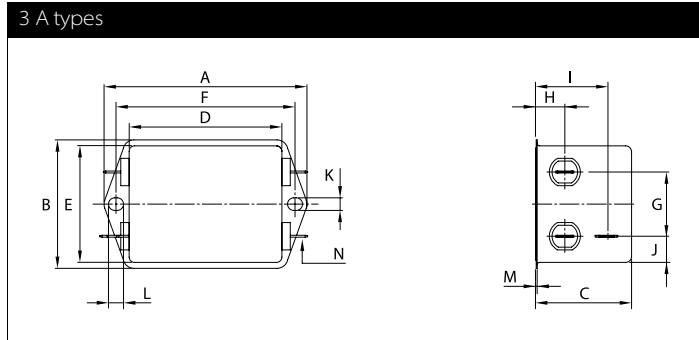
6 A types (X types)



6 A types (B types)



Mechanical data



Dimensions

	3 A	6 A	Tolerances
A	85 ±0.5	113.5 ±1	
B	54 ±0.5	57.5 ±1	
C	40.3 ±0.5	45.5 ±1	
D	64 ±0.5	94 ±1	
E	49.8	56	±0.5
F	75	103.5	±0.3
G	27	25	±0.2
H	12.3	12.4	±0.5
I	29.8	32.4	±0.5
J	11.4	15.5	±0.5
K	5.3	4.4	
L	6.3	6	
M	0.7	1	
N	6.3 x 0.8	6.3 x 0.8	

All dimensions in mm; 1 inch = 25.4 mm
Tolerances according: ISO 2768-m / EN 22768-m