



Chipsmall Limited consists of a professional team with an average of over 10 year of expertise in the distribution of electronic components. Based in Hongkong, we have already established firm and mutual-benefit business relationships with customers from,Europe,America and south Asia,supplying obsolete and hard-to-find components to meet their specific needs.

With the principle of “Quality Parts,Customers Priority,Honest Operation,and Considerate Service”,our business mainly focus on the distribution of electronic components. Line cards we deal with include Microchip,ALPS,ROHM,Xilinx,Pulse,ON,Everlight and Freescale. Main products comprise IC,Modules,Potentiometer,IC Socket,Relay,Connector.Our parts cover such applications as commercial,industrial, and automotives areas.

We are looking forward to setting up business relationship with you and hope to provide you with the best service and solution. Let us make a better world for our industry!



Contact us

Tel: +86-755-8981 8866 Fax: +86-755-8427 6832

Email & Skype: info@chipsmall.com Web: www.chipsmall.com

Address: A1208, Overseas Decoration Building, #122 Zhenhua RD., Futian, Shenzhen, China



IEC inlet filters FN 329

Performance IEC inlet filter

SCHAFNER
safety for electronic systems



- Rated currents up to 6A
- Integrated earth line choke
- Optional medical versions (B type)

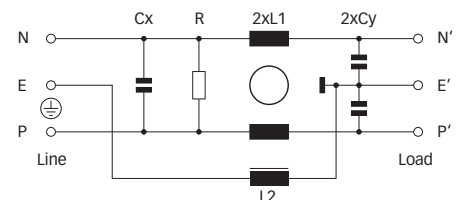
Approvals



Technical specifications

Maximum continuous operating voltage:	250VAC, 50/60Hz
Operating frequency:	dc to 400Hz
Rated currents:	1 to 6A @ 50°C max.
High potential test voltage:	P → E 2000VAC for 2 sec (standard types) P → E 2500VAC for 2 sec (B types) P → N 760VAC for 2 sec
Protection category:	IP40 according to IEC 60529
Temperature range (operation and storage):	-25°C to +85°C (25/85/21)
Design corresponding to:	UL 1283, CSA 22.2 No. 8 1986, EN 60939
Flammability corresponding to:	UL 94V-2 or better
MTBF @ 40°C/230V (Mil-HB-217F):	600,000 hours

Typical electrical schematic



The FN 321 IEC inlet filter combines an IEC inlet and mains filter with excellent filter attenuation in a small form factor. The FN 329 performance power entry module offers additional EMI suppression for the earth line. Choosing the FN 329 compact power entry module brings you the rapid availability of a standard filter associated with the necessary safety acceptances. Standard IEC connector filters are a practical solution helping you to pass EMI system approval in a short time. A wide selection on current ratings, output connections and low leakage versions for medical applications helping you to select the desired solution for your application.



Features and benefits

- High conducted attenuation performance, based on chokes with high saturation resistance and excellent thermal behavior.
- Integrated earth line choke.
- Rear or front flange mounting.
- Optional low leakage current versions for medical applications.
- Faston or solder terminal connections.
- Rated currents up to 6A.
- Custom-specific versions are available on request.

Typical applications

- Portable electrical and electronic equipment
- Small to medium-sized machines and household equipment
- Single-phase power supplies, switch mode power supplies
- Consumer goods
- Test and measurement equipment
- EDP and office equipment
- Medical equipment
- Rack mounting equipment

Filter selection table

Filter	Rated current @ 40°C (25°C)	Leakage current* @ 230VAC/50Hz	Inductance		Capacitance		Resistance	Output connections		Weight
	[A]	[μA]	L1 [mH]	L2 [mH]	Cx [nF]	Cy [nF]	R [kΩ]			[g]
FN 329-1-..	1 (1.2)	560	6.3	0.4	47	3.3		-01	-05	55
FN 329-3-..	3 (3.5)	560	1.25	0.4	47	3.3		-01	-05	55
FN 329-6-..	6 (7.2)	560	0.48	0.4	47	3.3		-01	-05	55
FN 329B-1-..	1 (1.2)	2	6.3	0.4	47		1000		-05	55
FN 329B-3-..	3 (3.5)	2	1.25	0.4	47		1000		-05	55
FN 329B-6-..	6 (7.2)	2	0.48	0.4	47		1000		-05	55

* Max. leakage under normal operating conditions. Note: if the neutral line is interrupted, worst case leakage could reach twice this level.

Product selector

FN 329x-yy-..



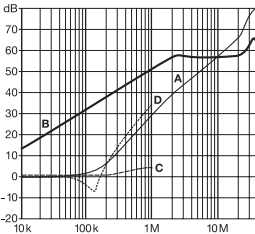
- 01: Solder lug
- 05: Faston 6.3 x 0.8mm
- 1 to 6: Rated current
- Blank: Standard version
- B: Medical version (with bleed resistor and without Y2-capacitor)

For example: FN 329-1-01, FN 329-3-05, FN 329B-6-05

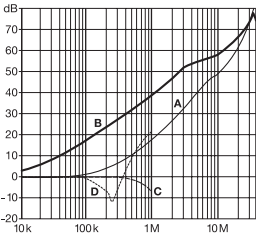
Typical filter attenuation

Per CISPR 17; A = 50Ω/50Ω sym; B = 50Ω/50Ω asym; C = 0.1Ω/100Ω sym; D = 100Ω/0.1Ω sym

1A types

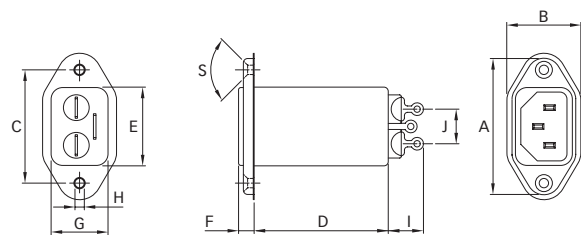


3 and 6A types

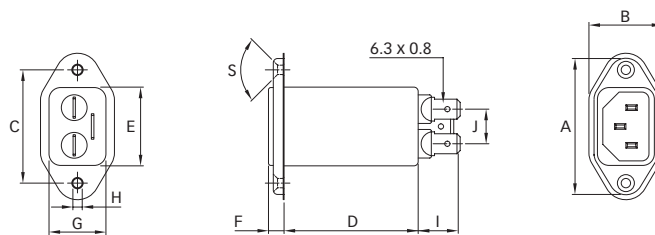


Mechanical data

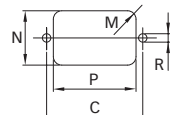
Connection style -01



Connection style -05



Panel cut out



Dimensions

	FN 329 Connection style -01	FN 329 Connection style -05	Tolerances
A	51.5	51.5	±0.5
B	26	26	±0.3
C	40	40	±0.2
D	46.6	46.6	±0.3
E	27.9	27.9	+0.5
F	5.5	5.5	±0.3
G	20.1	20.1	
H	Ø3.3	Ø3.3	
I	11.4	13.4	
J	10.9	10.9	±0.5
M	R ≤ 3	R ≤ 3	
N	21.5	21.5	±0.2
P	28.5	28.5	±0.2
R	M3	M3	
S	90°	90°	

All dimensions in mm; 1 inch = 25.4mm
 Tolerances according: ISO 2768 / EN 22768