



Chipsmall Limited consists of a professional team with an average of over 10 year of expertise in the distribution of electronic components. Based in Hongkong, we have already established firm and mutual-benefit business relationships with customers from,Europe,America and south Asia,supplying obsolete and hard-to-find components to meet their specific needs.

With the principle of “Quality Parts,Customers Priority,Honest Operation,and Considerate Service”,our business mainly focus on the distribution of electronic components. Line cards we deal with include Microchip,ALPS,ROHM,Xilinx,Pulse,ON,Everlight and Freescale. Main products comprise IC,Modules,Potentiometer,IC Socket,Relay,Connector.Our parts cover such applications as commercial,industrial, and automotives areas.

We are looking forward to setting up business relationship with you and hope to provide you with the best service and solution. Let us make a better world for our industry!



Contact us

Tel: +86-755-8981 8866 Fax: +86-755-8427 6832

Email & Skype: info@chipsmall.com Web: www.chipsmall.com

Address: A1208, Overseas Decoration Building, #122 Zhenhua RD., Futian, Shenzhen, China



Two-stage performance filter

FN 670

- Current ratings from 1.8 to 10A
- Very high differential and common mode attenuation
- Good high frequency attenuation
- Nennströme von 1,8 bis 10A
- Sehr hohe differentielle und Gleichtakt-Dämpfung
- Gute Hochfrequenzdämpfung
- Courants de service de 1,8 à 10A
- Très bonne atténuation en modes différentiel et commun
- Bonne atténuation à des hautes fréquences



Filter selection table

Choose the family FN xxx with the required current rating and features, and add /?? to determine input/output (line/load) connection style. Example: FN 670-3/06 is a 3A filter with fast-on connections.

Approvals



Family	Connections		Current ratings at 40°C (25°) A	Inductance L/L1 mH	Housing	Weight g	
	/06	/07				/06	/07
FN 670 -1.8 /??	/06	/07	1.6 (1.8)	7.2/7.2	K2	225	240
FN 670 -3 /??	/06	/07	2.5 (3)	12.2/1.8	K2	240	245
FN 670 -6 /??	/06	/07	5 (6)	7/7	K2	245	260
FN 670 -10 /??	/06	/07	8.0 (10)	10.4/2.7	L1	570	620

Additional specifications

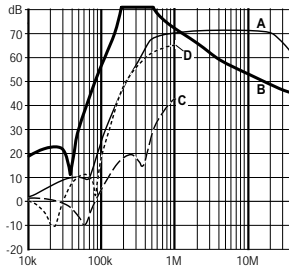
Filter type	Capacitance		Res. R MΩ	Maximum leakage μA/phase	Maximum operating voltage		Operating frequency Hz	Hipot test voltage	
	Cx/Cx1 nF	Cy nF			VAC	Hz		PN→E VAC	P→N VAC
Standard types	470/150	2.2	0.47	190	250	50/60	DC to 400	2000	1700

MTBF at 40°C, 230V, per Mil-HB-217F: 300,000 hours (for VDE-approved current ratings).

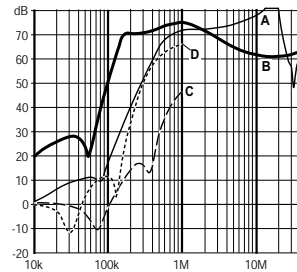
FN 670 insertion loss

Per CISPR 17; A = 50Ω/50Ω sym, B = 50Ω/50Ω asym, C = 0.1Ω/100Ω sym, D = 100Ω/0.1Ω sym

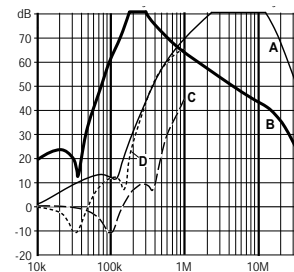
1.8 amp types



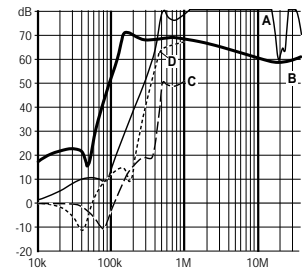
3 amp types



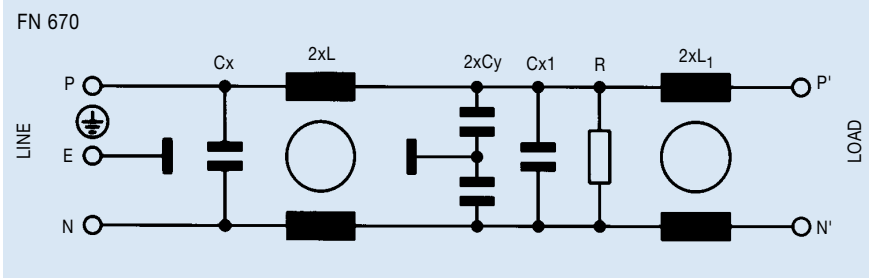
6 amp types



10 amp types



Electrical schematic



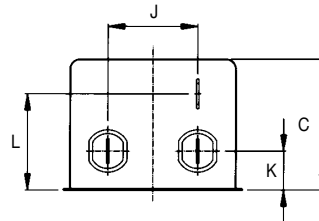
See tables for component values.

Mechanical data

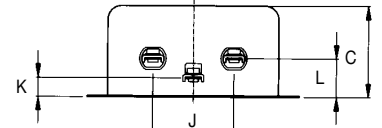
	FN 670-1.8 /-3/-6	FN 670-10	Tol.* mm
	K2	L1	
A	85	105	± 0.5
B	54	99.5 ± 1	± 0.5
C	40	38	± 1
D	65	84.5	± 1
E		79	± 0.5
F	75	95	± 0.2
G		51	± 0.1
J	27	40	± 0.5
K	12	9.5	± 0.5
L	29.5	19	± 0.5
M	5.3	4.4	± 0.1
N	6.3	6	± 0.1
Y		6	± 1
Z		140	+ 5

* Measurements share this common tolerance unless otherwise stated.

Front view

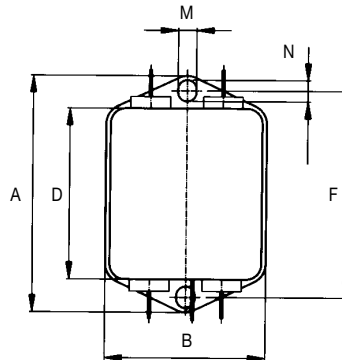


Housing K2

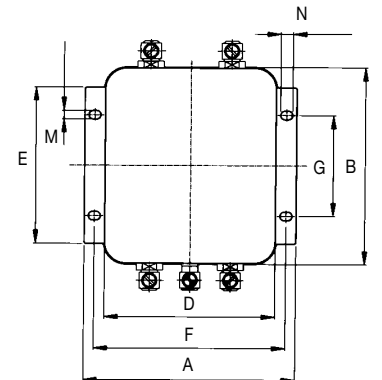


Housing L1

Top view



Housing K2



Housing L1

All dimensions in mm; 1 inch = 25.4 mm