



Chipsmall Limited consists of a professional team with an average of over 10 year of expertise in the distribution of electronic components. Based in Hongkong, we have already established firm and mutual-benefit business relationships with customers from,Europe,America and south Asia,supplying obsolete and hard-to-find components to meet their specific needs.

With the principle of "Quality Parts,Customers Priority,Honest Operation,and Considerate Service",our business mainly focus on the distribution of electronic components. Line cards we deal with include Microchip,ALPS,ROHM,Xilinx,Pulse,ON,Everlight and Freescale. Main products comprise IC,Modules,Potentiometer,IC Socket,Relay,Connector.Our parts cover such applications as commercial,industrial, and automotives areas.

We are looking forward to setting up business relationship with you and hope to provide you with the best service and solution. Let us make a better world for our industry!



Contact us

Tel: +86-755-8981 8866 Fax: +86-755-8427 6832

Email & Skype: info@chipsmall.com Web: www.chipsmall.com

Address: A1208, Overseas Decoration Building, #122 Zhenhua RD., Futian, Shenzhen, China



1000W Front End Power Supplies

Features

- ◆ 1U high
- ◆ Up to 3000W (3 units) in 19" rack
- ◆ Hotswap capable (ORing diodes built in)
- ◆ Low Cost
- ◆ PoE Option
- ◆ High efficiency
- ◆ Full array of signals



Key Market Segments & Applications



Specifications						
Model			12V Nominal	24V Nominal	32V Nominal	48V Nominal
Output Voltage Range	(1) V		10.5 - 13.2V	21.5 - 29V	28.8 - 38.4V	43 - 58V
Output Current	A		72A	40A	31A	21A
Line Regulation	%		<0.4%			
Load Regulation	%		<0.8%			
Output Noise	mV		150mV	200mV	250mV	300mV
Overvoltage Protection	V		14.3 to 15.7V	31 to 34V	41.5V to 45.5V	62 to 66V
Overcurrent Protection	-		105 - 125%, Constant Current type			
Load Sharing	-		Single wire current sharing, up to 8 units			
Remote Sense	-		Compenstates for 1V on each output lead			
I2C Monitoring	-		Optional (Specify /S)			
Signals (opto isolated)	-		DC OK, AC Fail, and Overtemperature warning, high on fail			
Remote On/Off	-		On: 0 - 0.6V or short, Off: 2- 15V or open			
Auxiliary Output	A		11.2-12.5VDC 0.25A			
AC Input	-		85 - 265VAC, 47 - 63Hz ² , 120-360VDC* (Derate 10% < 100VAC)			
Leakage Current	mA		<1.1mA at 230VAC input			
Inrush Current	A		<40A			
Hold up time (100VAC input)	-		20ms typical (800W loading)			
Efficiency (typ) 100/200VAC	-		80 / 83%	83 / 86%	84 / 87%	85 / 88%
Power Factor Correction	-		EN61000-3-2 class A (20-100% load), >0.98 at full load			
Immunity	-		EN61000-4-2, -3, -4, -5, -6, -11			
EMC (conducted and radiated)	-		EN55022, level B, FCC Class B			
Operating Temperature	°C		0 to +70°C, derate 2%/°C from 50 to 60°C, 2.5%/°C from 60 to 70°C			
Storage Temperature	°C		-30 to +85°C			
Withstand Voltage	-		Input to Output 3kVAC, Input to Ground 2kVAC, Output to Ground 500VAC for 1 min.			
Cooling	-		Two internal fans, airflow from front to back (variable speed)			
Humidity	-		Operating: 10 - 90% RH, Storage: 10 - 95% RH (non condensing)			
Shock & Vibration	-		Meets ETS 300 019			
Safety Agency	-		UL60950-1, EN60950-1 (Ed 2), CE Mark			
Input / Output Connector	-		Positronic PCB24W9M400A1 (Mating #PCIB24W9F400A1)			
Front panel indicators	-		AC OK, DC OK, DC Fail			
Size (LxWxH)	in		Stand alone: 1.61 x 5 x 11.4"; Rack: 1.72 x 19 x 13.8"			
Weight	g		2,000			
Warranty	yrs		Two Years			

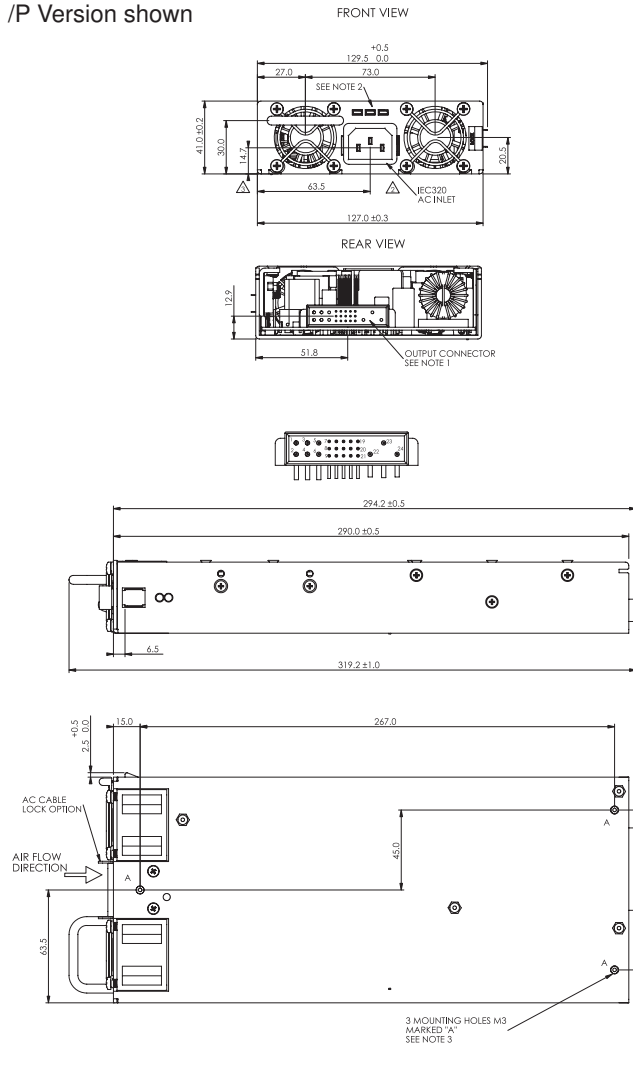
(1) Via Trim pin on output connector

(2) 47-440Hz with reduced PFC (100-265VAC input)

*Safety certified for AC input only

FPS1000 Outline Drawing

/P Version shown



Accessories

Part No.	Description
FPS/Z00016299	Module Mating Connector (Positronic PCIB24W9F400A1/AA-S1031)

Options

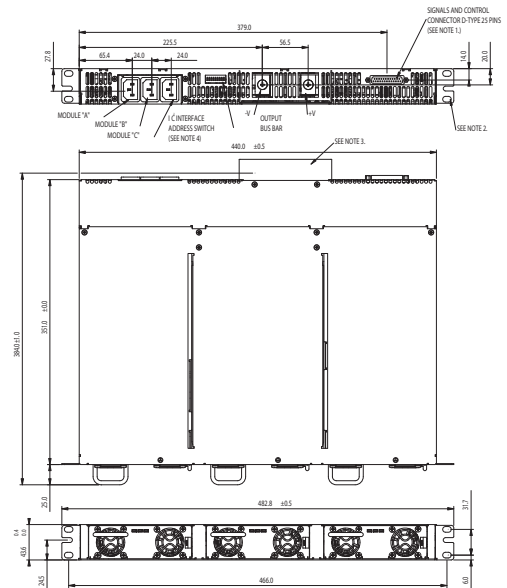
Suffix	Description
/POE*	1500VAC Output to Ground Isolation (Output noise 400mV)

* FPS100048 only.

Other Industrial Products

PX, CC-E, PAQ, PAH, PAF	DC-DC Converters
HFE	1U 1600-2500W Front End AC-DC

FPSS1U Outline Drawing



Model Selector

Front AC Input Configuration	Output Voltage	Output Current	Maximum Power	I ² C Interface
FPS100012/P	12V	72A	864W	No
FPS100012/PS	12V	72A	864W	Yes
FPS100024/P	24V	40A	960W	No
FPS100024/PS	24V	40A	960W	Yes
FPS100032/P	32V	31A	992W	No
FPS100032/PS	32V	31A	992W	Yes
FPS100048/P	48V	21A	1008W	No
FPS100048/PS	48V	21A	1008W	Yes
FPSS1U/P	Rack (3 slot), contains two blanking panels			
FPST1U/P	Rack with 3 individual outputs (floating)			

Rear AC Input Configuration	Output Voltage	Output Current	Maximum Power	I ² C Interface
FPS100012	12V	72A	864W	No
FPS100012/S	12V	72A	864W	Yes
FPS100024	24V	40A	960W	No
FPS100024/S	24V	40A	960W	Yes
FPS100032	32V	31A	992W	No
FPS100032/S	32V	31A	992W	Yes
FPS100048	48V	21A	1008W	No
FPS100048/S	48V	21A	1008W	Yes
FPSS1U	Rack (3 slot), contains two blanking panels			
FPST1U	Rack with 3 individual outputs (floating)			

Full Systems (3 units + rack)

Front AC Input Configuration	Output Voltage	Output Current	Maximum Power	I ² C Interface
FPS300024/P	24V	120A	2880W	No
FPS300024/PS	24V	120A	2880W	Yes
FPS300048/P	48V	63A	3000W	No
FPS300048/PS	48V	63A	3000W	Yes

Front AC Input configuration. Remove /P suffix for Rear AC configuration.

For Additional Information, please visit us.tdk-lambda.com/lp/products/fps-series.htm

