



Chipsmall Limited consists of a professional team with an average of over 10 year of expertise in the distribution of electronic components. Based in Hongkong, we have already established firm and mutual-benefit business relationships with customers from,Europe,America and south Asia,supplying obsolete and hard-to-find components to meet their specific needs.

With the principle of “Quality Parts,Customers Priority,Honest Operation,and Considerate Service”,our business mainly focus on the distribution of electronic components. Line cards we deal with include Microchip,ALPS,ROHM,Xilinx,Pulse,ON,Everlight and Freescale. Main products comprise IC,Modules,Potentiometer,IC Socket,Relay,Connector.Our parts cover such applications as commercial,industrial, and automotives areas.

We are looking forward to setting up business relationship with you and hope to provide you with the best service and solution. Let us make a better world for our industry!



Contact us

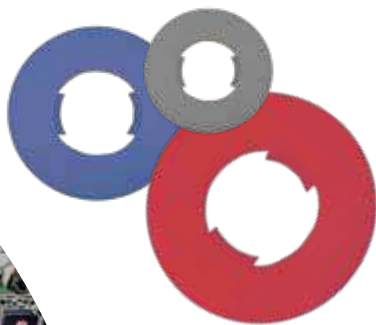
Tel: +86-755-8981 8866 Fax: +86-755-8427 6832

Email & Skype: info@chipsmall.com Web: www.chipsmall.com

Address: A1208, Overseas Decoration Building, #122 Zhenhua RD., Futian, Shenzhen, China



FASTENERS





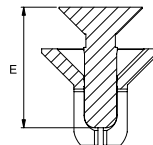
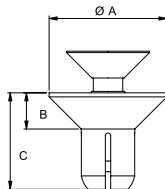
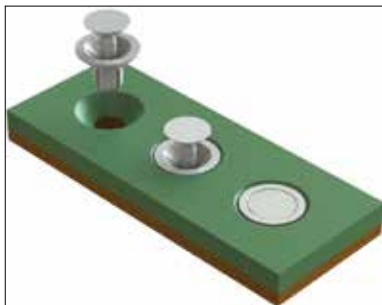
	RIVETS.....	120 - 127, 133
	FIR TREE RIVETS	128 - 131
	RATCHET FASTENERS	132
	SCREW COVERS & CAPS.....	134 - 136
	PLASTIC SCREWS	137 - 138
	NUTS	139 - 141
	THUMB SCREW KNOBS	140
	WASHERS & BUSHINGS	141 - 146
	VIBRATION MOUNTS.....	147
	ROTARY DAMPERS	148
	ACCESSORIES	149
	SNAP IN BEARINGS	150
	HOOK AND LOOP	151 - 154
	HIGH BOND TAPES	155 - 157
	FOAM TAPES	158 - 171
	FILM TAPES	172 - 175

FASTENERS

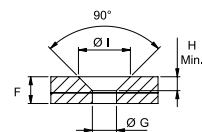


SNAP RIVETS

SRCS Series Countersunk Snap Rivets



Mounting Hole Detail



Specifications:

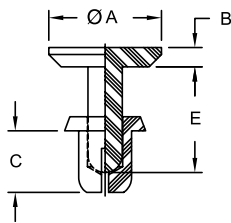
- Material: UL94 V-2 Nylon 6
- Color: See Table

Features:

- Countersunk design for flush surface
- Tamper resistant design
- Accommodates countersunk hole specification DIN ISO 7721

Item No.	Ø Hole	Total Holding Thickness F		Ø A		B		C		E		H Min.		Ø I	Bulk Pack Qty.			
		in	mm	in	mm	in	mm	in	mm	in	mm	in	mm					
SRCS-4060B	SRCS-4060W	0.16 - 0.17	4.1 - 4.2	0.14 - 0.18	3.5 - 4.5	0.35	8.8	0.11	2.7	0.24	6.0	0.28	7.1	0.10	2.6	0.37	9.4	1000
SRCS-4070B	SRCS-4070W	0.16 - 0.17	4.1 - 4.2	0.18 - 0.22	4.5 - 5.5	0.35	8.8	0.11	2.7	0.28	7.2	0.35	9.0	0.10	2.6	0.37	9.4	1000
SRCS-4080B	SRCS-4080W	0.16 - 0.17	4.1 - 4.2	0.22 - 0.26	5.5 - 6.5	0.35	8.8	0.11	2.7	0.32	8.0	0.35	9.0	0.10	2.6	0.37	9.4	1000
SRCS-4090B	SRCS-4090W	0.16 - 0.17	4.1 - 4.2	0.26 - 0.30	6.5 - 7.5	0.35	8.8	0.11	2.7	0.35	9.0	0.43	11.0	0.10	2.6	0.37	9.4	1000
SRCS-4100B	SRCS-4100W	0.16 - 0.17	4.1 - 4.2	0.30 - 0.34	7.5 - 8.5	0.35	8.8	0.11	2.7	0.39	10.0	0.43	11.0	0.10	2.6	0.37	9.4	1000
SRCS-5065B	SRCS-5065W	0.20 - 0.21	5.1 - 5.2	0.14 - 0.18	3.5 - 4.5	0.35	8.8	0.11	2.7	0.26	6.5	0.35	8.5	0.10	2.6	0.41	10.4	1000

SRH Series Snap Rivets, H-Type



Specifications:

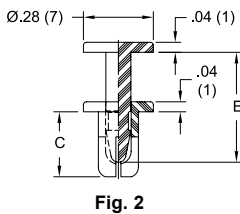
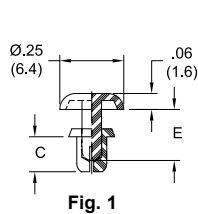
- Material: UL94 V-2 Nylon 6
- Color: Black

Features:

- Flat head design eases assembly and disassembly
- Installed easily by hand

Item No.	Ø Hole		Total Holding Thickness		Ø A		B		C		E		Bulk Pack Qty.
	in	mm	in	mm	in	mm	in	mm	in	mm	in	mm	
SRH-3035	0.122 - 0.126	3.1 - 3.2	0.039 - 0.079	1.0 - 2.0	0.252	6.4	0.039	1.0	0.14	3.5	0.26	6.5	1000
SRH-3045	0.122 - 0.126	3.1 - 3.2	0.079 - 0.118	2.0 - 3.0	0.252	6.4	0.039	1.0	0.18	4.5	0.26	6.5	1000
SRH-3055	0.122 - 0.126	3.1 - 3.2	0.118 - 0.157	3.0 - 4.0	0.252	6.4	0.039	1.0	0.22	5.6	0.26	6.5	1000
SRH-3065	0.122 - 0.126	3.1 - 3.2	0.157 - 0.197	4.0 - 5.0	0.236	6.0	0.039	1.0	0.26	6.5	0.39	10.0	1000
SRH-3080	0.122 - 0.126	3.1 - 3.2	0.197 - 0.256	5.0 - 6.5	0.236	6.0	0.039	1.0	0.31	8.0	0.39	10.0	1000
SRH-3090	0.122 - 0.126	3.1 - 3.2	0.256 - 0.295	6.5 - 7.5	0.252	6.4	0.039	1.0	0.35	9.0	0.47	12.0	1000
SRH-3100	0.122 - 0.126	3.1 - 3.2	0.295 - 0.335	7.5 - 8.5	0.252	6.4	0.039	1.0	0.39	10.0	0.47	12.0	1000
SRH-3535	0.142 - 0.146	3.6 - 3.7	0.047 - 0.083	1.2 - 2.1	0.252	6.4	0.039	1.0	0.14	3.5	0.26	6.5	1000
SRH-3545	0.142 - 0.146	3.6 - 3.7	0.087 - 0.122	2.2 - 3.1	0.252	6.4	0.039	1.0	0.18	4.5	0.26	6.5	1000
SRH-3555	0.142 - 0.146	3.6 - 3.7	0.118 - 0.157	3.0 - 4.0	0.236	6.0	0.039	1.0	0.22	5.5	0.39	10.0	1000
SRH-3560	0.142 - 0.146	3.6 - 3.7	0.138 - 0.177	3.5 - 4.5	0.236	6.0	0.039	1.0	0.24	6.0	0.39	10.0	1000
SRH-3570	0.142 - 0.146	3.6 - 3.7	0.177 - 0.217	4.5 - 5.5	0.236	6.0	0.039	1.0	0.28	7.0	0.39	10.0	1000
SRH-3580	0.142 - 0.146	3.6 - 3.7	0.217 - 0.256	5.5 - 6.5	0.236	6.0	0.039	1.0	0.31	8.0	0.39	10.0	1000

SRP Series High Temperature Snap Rivet



Specifications:

- Material: UL94 V-1 Polysulfone
- Color: Black

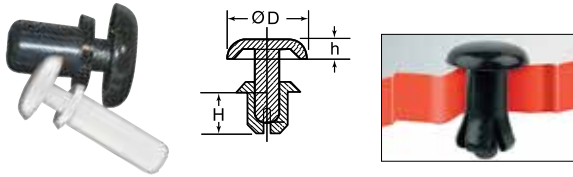
Features:

- Withstands temperatures up to 311°F (155°C)

Item No.	Ø Hole		Total Holding Thickness		C		E		Fig. No.	Bulk Pack Qty.
	in	mm	in	mm	in	mm	in	mm		
SRP-3045	0.122 - 0.126	3.1 - 3.2	0.059 - 0.098	1.5 - 2.5	0.18	4.5	0.24	6.1	1	1000
SRP-3055	0.122 - 0.126	3.1 - 3.2	0.098 - 0.138	2.5 - 3.5	0.22	5.5	0.24	6.1	1	1000
SRP-4065	0.157 - 0.165	4.0 - 4.2	0.138 - 0.177	3.5 - 4.5	0.26	6.5	0.43	11.0	2	1000



SR/SRVO/SRHR Series
Snap Rivet



Specifications:

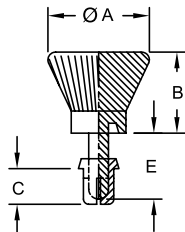
- Material: See Table
- Color: See Table

Features:

- Designed for fast and easy installation without any tools
- Simply place rivet into hole and press down on the head to fasten
- Round head provides a clean, finished look
- SRHR part numbers withstand temperatures up to 266°F (130°C)

Item No.				Ø Hole	Total Holding Thickness	Ø D	H	h	Bulk Pack Qty.
Nylon 6 UL94 V-2		Nylon 66/6 UL94 V-0							
Black	White	Black	Tan	in	in	in	in	in	
SR-2024B	SR-2024W	SRVO-2024B	—	0.083 - 0.087	0.024 - 0.047	0.165	0.090	0.047	1000
SR-2032B	SR-2032W	SRVO-2032B	—	0.083 - 0.087	0.051 - 0.079	0.165	0.130	0.047	1000
SR-2040B	SR-2040W	SRVO-2040B	—	0.083 - 0.087	0.083 - 0.110	0.165	0.160	0.047	1000
SR-2048B	SR-2048W	SRVO-2048B	—	0.083 - 0.087	0.114 - 0.142	0.165	0.190	0.047	1000
SR-2056B	SR-2056W	SRVO-2056B	—	0.083 - 0.087	0.146 - 0.173	0.165	0.220	0.047	1000
SR-2064B	SR-2064W	SRVO-2064B	—	0.083 - 0.087	0.173 - 0.197	0.165	0.250	0.047	1000
SR-2632B	SR-2632W	SRVO-2632B	—	0.106 - 0.110	0.039 - 0.079	0.197	0.130	0.055	1000
SR-2642B	SR-2642W	SRVO-2642B	—	0.106 - 0.110	0.079 - 0.118	0.197	0.170	0.055	1000
SR-2648B	SR-2648W	SRVO-2648B	—	0.106 - 0.110	0.106 - 0.142	0.197	0.190	0.055	1000
SR-2655B	SR-2655W	SRVO-2655B	—	0.106 - 0.110	0.134 - 0.169	0.197	0.220	0.055	1000
SR-2664B	SR-2664W	SRVO-2664B	—	0.106 - 0.110	0.169 - 0.205	0.197	0.250	0.055	1000
SR-2672B	SR-2672W	SRVO-2672B	—	0.106 - 0.110	0.201 - 0.236	0.197	0.280	0.055	1000
SR-3035B	SR-3035W	SRVO-3035B	SRHR-3035	0.122 - 0.126	0.039 - 0.079	0.252	0.140	0.063	1000
SR-3045B	SR-3045W	SRVO-3045B	SRHR-3045	0.122 - 0.126	0.079 - 0.118	0.252	0.180	0.063	1000
SR-3055B	SR-3055W	SRVO-3055B	SRHR-3055	0.122 - 0.126	0.118 - 0.157	0.252	0.220	0.063	1000
SR-3065B	SR-3065W	SRVO-3065B	SRHR-3065	0.122 - 0.126	0.157 - 0.197	0.252	0.260	0.063	1000
SR-3075B	SR-3075W	SRVO-3075B	—	0.122 - 0.126	0.197 - 0.236	0.252	0.300	0.063	1000
SR-3080B	SR-3080W	SRVO-3080B	SRHR-3080	0.122 - 0.126	0.217 - 0.256	0.252	0.320	0.063	1000
SR-3090B	SR-3090W	SRVO-3090B	—	0.122 - 0.126	0.256 - 0.295	0.252	0.350	0.063	1000
SR-3100B	SR-3100W	SRVO-3100B	—	0.122 - 0.126	0.295 - 0.335	0.252	0.390	0.063	1000
SR-3230B	—	—	—	0.122 - 0.126	0.807 - 0.847	0.252	0.906	0.063	1000
SR-3535B	SR-3535W	SRVO-3535B	SRHR-3535	0.142 - 0.146	0.047 - 0.083	0.252	0.140	0.063	1000
SR-3545B	SR-3545W	SRVO-3545B	SRHR-3545	0.142 - 0.146	0.083 - 0.118	0.252	0.180	0.063	1000
SR-3550B	SR-3550W	SRVO-3550B	—	0.142 - 0.146	0.106 - 0.142	0.252	0.200	0.063	1000
SR-3555B	SR-3555W	SRVO-3555B	SRHR-3555	0.142 - 0.146	0.118 - 0.157	0.252	0.220	0.063	1000
SR-3560B	SR-3560W	SRVO-3560B	—	0.142 - 0.146	0.146 - 0.181	0.252	0.240	0.063	1000
SR-3570B	SR-3570W	SRVO-3570B	—	0.142 - 0.146	0.177 - 0.217	0.252	0.280	0.063	1000
SR-3580B	SR-3580W	SRVO-3580B	—	0.142 - 0.146	0.217 - 0.256	0.252	0.320	0.063	1000
SR-4050B	SR-4050W	SRVO-4050B	SRHR-4050	0.161 - 0.165	0.098 - 0.138	0.315	0.200	0.071	1000
SR-4060B	SR-4060W	SRVO-4060B	SRHR-4060	0.161 - 0.165	0.138 - 0.177	0.315	0.240	0.071	1000
SR-4070B	SR-4070W	SRVO-4070B	SRHR-4070	0.161 - 0.165	0.177 - 0.217	0.315	0.280	0.071	1000
SR-4080B	SR-4080W	SRVO-4080B	SRHR-4080	0.161 - 0.165	0.217 - 0.256	0.315	0.320	0.071	1000
SR-4090B	SR-4090W	SRVO-4090B	—	0.161 - 0.165	0.256 - 0.295	0.315	0.350	0.071	1000
SR-4100B	SR-4100W	SRVO-4100B	SRHR-4100	0.161 - 0.165	0.295 - 0.335	0.315	0.390	0.071	1000
SR-4120B	SR-4120W	SRVO-4120B	—	0.161 - 0.165	0.354 - 0.413	0.315	0.470	0.071	1000
SR-5045B	SR-5045W	SRVO-5045B	—	0.201 - 0.205	0.059 - 0.098	0.354	0.180	0.087	1000
SR-5055B	SR-5055W	SRVO-5055B	—	0.201 - 0.205	0.098 - 0.138	0.354	0.220	0.087	1000
SR-5065B	SR-5065W	SRVO-5065B	—	0.201 - 0.205	0.138 - 0.177	0.354	0.260	0.087	1000
SR-5075B	SR-5075W	SRVO-5075B	—	0.201 - 0.205	0.177 - 0.217	0.354	0.300	0.087	1000
SR-5085B	SR-5085W	SRVO-5085B	—	0.201 - 0.205	0.217 - 0.256	0.354	0.340	0.087	1000
SR-5095B	SR-5095W	SRVO-5095B	—	0.201 - 0.205	0.256 - 0.295	0.354	0.370	0.087	1000
SR-5105B	SR-5105W	SRVO-5105B	—	0.201 - 0.205	0.295 - 0.335	0.354	0.410	0.087	1000
SR-6060B	SR-6060W	SRVO-6060B	—	0.240 - 0.244	0.098 - 0.157	0.472	0.240	0.098	1000
SR-6080B	SR-6080W	SRVO-6080B	—	0.240 - 0.244	0.138 - 0.217	0.472	0.320	0.118	1000

SRT Series
Snap Rivet, T-Type



Specifications:

- Material: UL94 V-2 Nylon 6/6
- Color: Black

Features:

- Push/pull knob lets rivet snap in and out up to 25 times
- For applications requiring quick assembly and disassembly

Item No.	Ø Hole		Total Holding Thickness		Ø A		B		C		E		Bulk Pack Qty.
	in	mm	in	mm	in	mm	in	mm	in	mm	in	mm	
SRT-3035B	0.122 - 0.126	3.1 - 3.2	0.039 - 0.079	1.0 - 2.0	0.394	10.0	0.315	8.0	0.14	3.5	0.26	6.5	1000
SRT-3045B	0.122 - 0.126	3.1 - 3.2	0.079 - 0.118	2.0 - 3.0	0.394	10.0	0.315	8.0	0.18	4.5	0.26	6.5	1000
SRT-3055B	0.122 - 0.126	3.1 - 3.2	0.118 - 0.157	3.0 - 4.0	0.394	10.0	0.315	8.0	0.22	5.6	0.26	6.5	1000
SRT-3065B	0.122 - 0.126	3.1 - 3.2	0.157 - 0.197	4.0 - 5.0	0.394	10.0	0.315	8.0	0.26	6.5	0.35	9.0	1000
SRT-3075B	0.122 - 0.126	3.1 - 3.2	0.197 - 0.236	5.0 - 6.0	0.394	10.0	0.315	8.0	0.30	7.5	0.35	9.0	1000
SRT-3080B	0.122 - 0.126	3.1 - 3.2	0.217 - 0.256	5.5 - 6.5	0.394	10.0	0.315	8.0	0.32	8.0	0.35	9.0	1000
SRT-3535B	0.142 - 0.146	3.6 - 3.7	0.039 - 0.079	1.0 - 2.0	0.394	10.0	0.315	8.0	0.14	3.5	0.26	6.6	1000
SRT-3545B	0.142 - 0.146	3.6 - 3.7	0.079 - 0.118	2.0 - 3.0	0.394	10.0	0.315	8.0	0.18	4.5	0.26	6.6	1000
SRT-3555B	0.142 - 0.146	3.6 - 3.7	0.118 - 0.146	3.0 - 3.7	0.394	10.0	0.315	8.0	0.22	5.5	0.26	6.6	1000
SRT-3570B	0.142 - 0.146	3.6 - 3.7	0.150 - 0.205	3.8 - 5.2	0.394	10.0	0.315	8.0	0.28	7.0	0.35	9.0	1000
SRT-3580B	0.142 - 0.146	3.6 - 3.7	0.209 - 0.256	5.3 - 6.5	0.394	10.0	0.315	8.0	0.32	8.0	0.35	9.0	1000
SRT-4050B	0.161 - 0.165	4.1 - 4.2	0.098 - 0.138	2.5 - 3.5	0.472	12.0	0.315	8.0	0.20	5.0	0.30	7.6	1000
SRT-4060B	0.161 - 0.165	4.1 - 4.2	0.138 - 0.177	3.5 - 4.5	0.472	12.0	0.315	8.0	0.24	6.0	0.30	7.6	1000
SRT-4070B	0.161 - 0.165	4.1 - 4.2	0.177 - 0.216	4.5 - 5.5	0.472	12.0	0.315	8.0	0.28	7.0	0.44	11.2	1000
SRT-4080B	0.161 - 0.165	4.1 - 4.2	0.216 - 0.256	5.5 - 6.5	0.472	12.0	0.315	8.0	0.32	8.0	0.44	11.2	1000
SRT-4090B	0.161 - 0.165	4.1 - 4.2	0.256 - 0.295	6.5 - 7.5	0.472	12.0	0.315	8.0	0.35	9.0	0.44	11.2	1000
SRT-4100B	0.161 - 0.165	4.1 - 4.2	0.295 - 0.335	7.5 - 8.5	0.472	12.0	0.315	8.0	0.39	10.0	0.44	11.2	1000



SNAP RIVETS / FIR TREE FASTENER

1301 Series Snap In Rivets



Fig. 1



Fig. 2



Fig. 3



Fig. 4



Fig 5



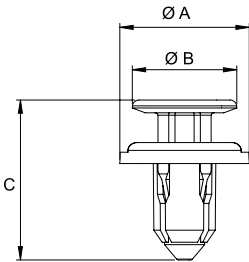
Fig 6



Fig 7



Fig 8



Specifications:

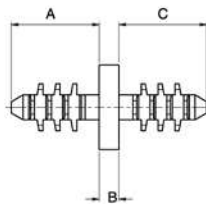
- Material: See Table
- Color: Black

Features:

- Quickly installed by hand
- Pin is predriven into the grommet
- Grommet expands as pin is inserted providing a tight fit
- Ideally suited for any application requiring a front-mount rivet
- 14 sizes to accommodate a variety of hole diameters and panel thicknesses
- Reliable way to hold materials together

Item No.	Fig	Ø Hole		Min Panel Thickness		Max Panel Thickness		Ø A		Ø B		C		Material	Bulk Pack Qty.
		in	mm	in	mm	in	mm	in	mm	in	mm	in	mm		
1301297	1	0.24	6.15	0.079	2.0	0.177	4.5	0.55	14.0	0.39	9.9	0.724	18.4	Acetal	1000
1301298	2	0.28	7.0	0.098	2.5	0.197	5.0	0.78	19.9	0.58	14.8	0.831	21.1	Grommet: Acetal, Pin: Polypropylene	1000
1301299	3	0.31	8.0	0.177	4.5	0.189	4.8	0.63	16.1	0.51	13.0	0.783	19.9	Acetal	1000
1301300	3	0.39	10.0	0.217	5.5	0.276	7.0	0.79	20.0	0.55	14.0	1.03	26.1	Grommet: Acetal, Pin: Polypropylene	1000
1301301	4	0.35	9.0	0.15	3.8	0.189	4.8	0.71	18.0	0.55	13.9	1.547	39.3	Grommet: Acetal, Pin: PBT	1000
1301302	5	0.28	7.2	0.118	3.0	0.157	4.0	0.71	18.1	0.48	12.2	0.689	17.5	Acetal	1000
1301303	2	0.31	8.0	0.098	2.5	0.197	5.0	0.79	20.0	0.58	14.8	0.78	19.8	Grommet: Acetal, Pin: Polypropylene	1000
1301304	6	0.27	6.75	0.039	1.0	0.157	4.0	0.79	20.0	0.51	13.0	0.736	18.7	Acetal	1000
1301305	7	0.28	7.0	0.059	1.5	0.098	2.5	0.79	20.0	0.55	14.0	0.74	18.8	Grommet: Acetal, Pin: PBT	1000
1301306	3	0.39	10.0	0.276	7.0	0.315	8.0	0.79	20.0	0.53	13.6	1.201	30.5	Acetal	1000
1301307	5	0.24	6.0	0.161	4.1	0.197	5.0	0.55	14.0	0.29	7.3	0.65	16.5	Acetal	1000
1301308	7	0.31	8.0	0.118	3.0	0.197	5.0	0.79	20.0	0.47	11.8	0.843	21.4	Acetal	1000
1301309	6	0.31	7.8	0.118	3.0	0.236	6.0	0.79	20.0	0.51	13.0	0.874	22.2	Acetal	1000
1301310	8	0.28	7.0	0.118	3.0	0.138	3.5	0.58	14.8	0.22	5.6	0.819	20.8	Acetal	1000

4952 Series Double Ended Fir Tree Rivet



Specifications:

- Material: Nylon 6/6
- Color: Black

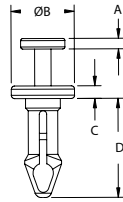
Features:

- Allows two panels to be connected from the center so that no fastener head is visible

Item No.	Ø Hole		Panel Thickness A Side		Panel Thickness C Side		A		C		B		Ø D		Bulk Pack Qty.
	in	mm	in	mm	in	mm	in	mm	in	mm	in	mm	in	mm	
495218	0.157	4.0	0.102 - 0.248	2.6 - 6.3	0.102 - 0.248	2.6 - 6.3	0.307	7.8	0.307	7.8	0.071	1.8	0.295	7.5	1000
495219	0.295	7.5	0.118 - 0.315	3.0 - 8.0	0.118 - 0.315	3.0 - 8.0	0.689	17.5	0.689	17.5	0.039	1.0	0.748	19.0	1000
495220	0.315	8.0	0.126 - 0.315	3.2 - 9.5	0.142 - 0.748	3.6 - 19.0	0.457	11.6	0.858	21.8	0.043	1.1	0.500	12.7	1000



**TRM Series
Mini Tough Snap Rivet**



Specifications:

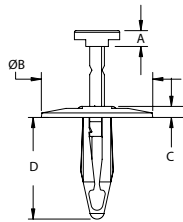
- Material: UL94 V-0 Heat Stabilized Nylon 6/6
- Color: Black

Features:

- One-piece design easily installed by hand
- Removable by pulling pin out of grommet

Item No.	Ø Hole		Panel Thickness		A		Ø B		C		D		Bulk Pack Qty.
	in	mm	in	mm	in	mm	in	mm	in	mm	in	mm	
TRM-1	0.097 - 0.103	2.5 - 2.6	0.160 - 0.180	4.1 - 4.6	0.040	1.0	0.190	4.8	0.060	1.5	0.345	8.8	1000
TRM-2	0.106 - 0.112	2.7 - 2.8	0.080 - 0.105	2.0 - 2.7	0.050	1.3	0.218	5.5	0.060	1.5	0.300	7.6	1000
TRM-3	0.122 - 0.128	3.1 - 3.3	0.105 - 0.130	2.7 - 3.3	0.050	1.3	0.218	5.5	0.060	1.5	0.320	8.1	1000
TRM-4	0.122 - 0.128	3.1 - 3.3	0.130 - 0.155	3.3 - 3.9	0.050	1.3	0.218	5.5	0.060	1.5	0.345	7.6	1000
TRM-5	0.122 - 0.128	3.1 - 3.3	0.155 - 0.180	3.9 - 4.6	0.050	1.3	0.218	5.5	0.060	1.5	0.370	9.4	1000
TRM-6	0.122 - 0.128	3.1 - 3.3	0.240 - 0.265	6.1 - 6.7	0.050	1.3	0.218	5.5	0.060	1.5	0.455	11.6	1000
TRM-7	0.144 - 0.154	3.7 - 3.9	0.265 - 0.290	6.7 - 7.4	0.050	1.3	0.300	7.6	0.060	1.5	0.470	11.9	1000

**TR Series
Tough Snap Rivet**

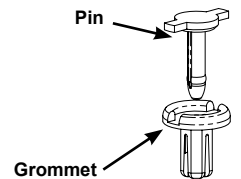
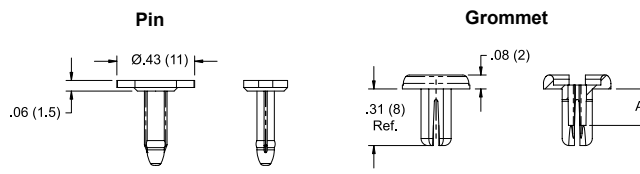


Specifications:

- Material 1: UL94 HB Impact Modified Nylon 6/6
- Material 2: Nylon 6/6
- Color: Black

Item No.	Ø Hole		Total Holding Thickness		Ø B		C		D		Material	Bulk Pack Qty.
	in	mm	in	mm	in	mm	in	mm	in	mm		
TR-1	0.193 - 0.205	4.9 - 5.2	0.059 - 0.181	1.5 - 4.6	0.283	7.2	0.045	1.1	0.445	11.3	1	1000
• 495201	0.197	5.0	0.059 - 0.181	1.5 - 4.6	0.283	7.2	0.060	1.0	0.449	11.4	2	1000
TR-2	0.248 - 0.276	6.3 - 7.0	0.098 - 0.350	2.5 - 8.9	0.985	25.0	0.098	2.5	0.898	22.8	1	1000
• 495202	0.248	6.3	0.157 - 0.299	4.0 - 7.6	0.709	18.0	0.098	2.5	0.681	17.3	2	1000
• 495203	0.248	6.3	0.098 - 0.350	2.5 - 8.9	1.000	25.4	0.098	2.5	0.886	22.5	2	1000
• 495204	0.248	6.3	0.098 - 0.350	2.5 - 8.9	0.591	15.0	0.106	2.7	0.728	18.5	2	1000
• 495205	0.248	6.3	0.059 - 0.299	1.5 - 7.6	0.685	17.4	0.079	2.0	0.803	20.4	2	1000
• 495206	0.256	6.5	0.098 - 0.350	2.5 - 8.9	0.591	15.0	0.079	2.0	0.882	22.4	2	1000
TR-3	0.250 - 0.276	6.4 - 7.0	0.098 - 0.315	2.5 - 8.0	0.585	14.9	0.079	2.0	0.897	22.8	1	1000
• 495207	0.276	7.0	0.472 - 0.591	12.0 - 15.0	1.000	25.4	0.098	2.5	1.063	27.0	2	1000
• 495208	0.276	7.0	0.354 - 0.512	9.0 - 13.0	0.709	18.0	0.098	2.5	0.906	23.0	2	1000
• 495209	0.315	8.0	0.118 - 0.315	3.0 - 8.0	0.787	20.0	0.106	2.7	0.827	21.0	2	1000
• 495210	0.315	8.0	0.118 - 0.315	3.0 - 8.0	0.591	15.0	0.102	2.6	0.866	22.0	2	1000
• 495211	0.315	8.0	0.157 - 0.315	4.0 - 8.0	0.709	18.0	0.114	2.9	0.906	23.0	2	1000
• 495212	0.315	8.0	0.472 - 0.630	12.0 - 16.0	0.590	15.0	0.118	3.0	1.142	29.0	2	1000
TR-4	0.315 - 0.325	8.0 - 8.3	0.118 - 0.315	3.0 - 8.5	0.585	14.9	0.106	2.7	0.830	21.1	1	1000
• 495213	0.354	9.0	0.118 - 0.276	3.0 - 7.0	0.630	16.0	0.102	2.6	0.787	20.0	2	1000
• 495214	0.374	9.5	0.035 - 0.189	0.9 - 4.8	0.984	25.0	0.094	2.4	0.992	25.2	2	1000
• 495215	0.374	9.5	0.138 - 0.2766	3.5 - 7.0	0.705	17.9	0.098	2.5	0.906	23.0	2	1000
• 495216	0.394	10.0	0.236 - 0.394	6.0 - 10.0	0.787	20.0	0.146	3.7	1.051	26.7	2	1000

**RRR Series
Removable Rivet**



Specifications:

- Material: UL94 V-0 Nylon 66/6
- Color: Black

Features:

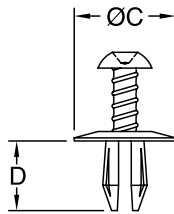
- Pin and grommet are supplied unassembled
- Pin is removable by pulling on the side tabs
- Can be used in a round or square hole

Item No.	Hole Size		Total Holding Thickness		A Ref.		Pack Qty.
	in	mm	in	mm	in	mm	
RRR-1	0.188-0.208 Ø or 0.177 Min. Square	4.76 - 5.28 Ø or 4.5 Min. Square	0.059 - 0.138	1.5 - 3.5	0.14	3.6	1000
RRR-2	0.188-0.208 Ø or 0.177 Min. Square	4.76 - 5.28 Ø or 4.5 Min. Square	0.138 - 0.217	3.5 - 5.5	0.17	4.4	1000



RIVETS

TPSR/USR/113 Series
Unscrewing Rivet



Specifications:

- Material: UL94 V-2 Nylon 6/6
- Color: See Table

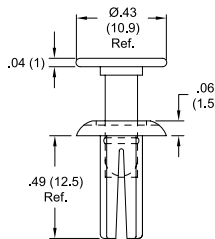
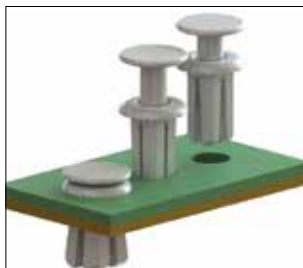
Features:

- Easily installed by hand
- As pin is screwed into body, the grommet expands locking it in place
- Removable by using a phillips head screwdriver
- Can be reused

* Screw Material: Acetal UL94 HB; Grommet Material: Nylon 6
** Nylon 6

Item No.	Color	Ø Hole		Total Holding Thickness		Ø C		D		Bulk Pack Qty.	
		in	mm	in	mm	in	mm	in	mm		
USR-1131	Black	—	0.197	5.0	0.059 - 0.236	1.5 - 6.0	0.472	12.0	0.433	11.0	1000
• 113 000 169 902	Natural	—	0.197	5.0	0.157 - 0.276	4.0 - 7.0	0.472	12.0	0.433	11.0	250
• 113 105 059 902	• 113 105 000 002	—	0.197	5.0	0.079 - 0.276	2.0 - 7.0	0.492	12.5	0.378	9.6	250
USR-1132	Black	—	0.236	6.0	0.059 - 0.236	1.5 - 6.0	0.630	16.0	0.433	11.0	1000
• 113 106 059 902	• 113 106 000 002	—	0.236	6.0	0.079 - 0.315	2.0 - 8.0	0.591	15.0	0.421	10.7	250
• 113 000 269 902	—	—	0.236	6.0	0.157 - 0.276	4.0 - 7.0	0.630	16.0	0.433	11.0	250
—	• 401007	—	0.250	6.4	0.156	4.0	0.594	15.1	0.422	10.7	1000
—	• 401008	—	0.250	6.4	0.140	3.6	0.703	17.9	0.438	11.1	1000
USR-64125**	Black	—	0.250	6.4	0.126 - 0.172	3.2 - 4.4	0.594	15.1	0.500	12.7	500
• 113 107 059 902	• 113 107 000 002	—	0.276	7.0	0.118 - 0.354	3.0 - 9.0	0.689	17.5	0.476	12.1	250
—	• 401009	—	0.281	7.0	0.093	2.36	0.689	17.5	0.476	12.1	1000
USR-1133	Black	—	0.315	8.0	0.118 - 0.394	3.0 - 1.0	0.787	20.0	0.551	14.0	1000
USR-1*	Natural	—	0.315	8.0	0.276 - 0.315	7.0 - 8.0	0.787	20.0	0.866	22.0	1000
• 113 108 059 902	• 113 108 000 002	—	0.315	8.0	0.118 - 0.394	3.0 - 10.0	0.787	20.0	0.531	13.5	250
• 113 000 369 902	—	—	0.315	8.0	0.118 - 0.394	3.0 - 10.0	0.787	20.0	0.551	14.0	250

PPR-10 Series
Push Rivet



Specifications:

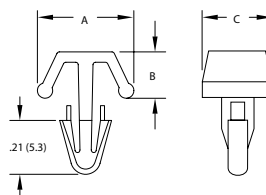
- Material: UL94 V-2 Nylon 6
- Color: Natural

Features:

- Used in either a round or square hole
- Square hole mounting is for anti-rotation applications

Item No.	Total Holding Thickness		Mounting Hole Options (Round Hole)		Mounting Hole Options (Square Hole)		Bulk Pack Qty.
	in	mm	in	mm	in	mm	
PPR-10	0.140 - 0.200	3.56 - 5.08	0.25	6.4	0.22	5.6	100

MB Series
Mounting Button



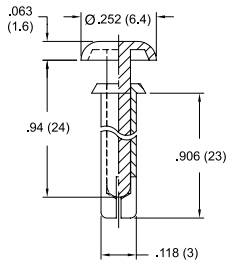
Specifications:

- Material: UL94 V-2 Nylon 6/6
- Color: Natural

Item No.	Hole Diameter		Total Holding Thickness		A Ref.		B Ref.		C		Bulk Pack Qty.
	in	mm	in	mm	in	mm	in	mm	in	mm	
MB-1-156	0.156	4.0	0.031 - 0.093	0.8 - 2.4	0.391	9.9	0.188	4.8	0.310	7.9	1000
MB-3-156	0.156	4.0	0.093 - 0.156	2.4 - 4.0	0.391	9.9	0.188	4.8	0.310	7.9	1000
MB-5-156	0.156	4.0	0.156 - 0.219	4.0 - 5.6	0.391	9.9	0.188	4.8	0.310	7.9	1000
MB-7-156	0.156	4.0	0.219 - 0.281	5.6 - 7.1	0.391	9.9	0.188	4.8	0.310	7.9	1000
MB-9-156	0.156	4.0	0.281 - 0.343	7.1 - 8.7	0.391	9.9	0.188	4.8	0.310	7.9	1000
MB-11-156	0.156	4.0	0.343 - 0.406	8.7 - 10.3	0.391	9.9	0.188	4.8	0.310	7.9	1000
MB-1-187	0.187	4.8	0.031 - 0.093	0.8 - 2.4	0.484	12.3	0.188	4.8	0.310	7.9	1000
MB-3-187	0.187	4.8	0.093 - 0.156	2.4 - 4.0	0.484	12.3	0.188	4.8	0.310	7.9	1000
MB-5-187	0.187	4.8	0.156 - 0.219	4.0 - 5.6	0.484	12.3	0.188	4.8	0.310	7.9	1000
MB-7-187	0.187	4.8	0.219 - 0.281	5.6 - 7.1	0.484	12.3	0.188	4.8	0.310	7.9	1000
MB-9-187	0.187	4.8	0.281 - 0.343	7.1 - 8.7	0.484	12.3	0.188	4.8	0.310	7.9	1000
MB-11-187	0.187	4.8	0.343 - 0.406	8.7 - 10.3	0.484	12.3	0.188	4.8	0.310	7.9	1000



**SR-3230 Series
Fan Mount Snap Rivet**



Specifications:

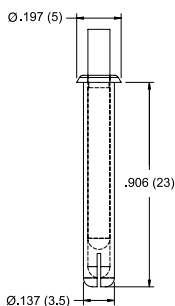
- Material: UL94 V-2 Nylon 6
- Color: Black

Features:

- Prongs expand to hold securely as pin is driven in
- Single-operation front mounting saves time and money

Item No.	Ø Hole		Total Holding Thickness		Bulk Pack Qty.
	in	mm	in	mm	
SR-3230B	0.122 - 0.126	3.1 - 3.2	0.807 - 0.847	20.5 - 21.5	1000

**FR-1
Fan Mount Rivet**



Installation Tool

Specifications:

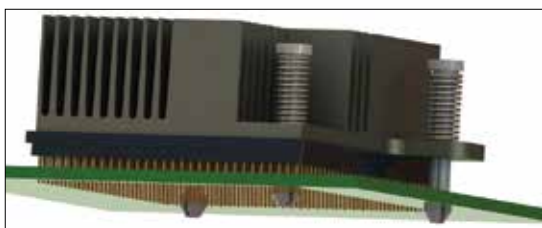
- Material: UL94 V-2 Nylon 6
- Color: Black

Features:

- Permanently mounts fan to chassis, or finger guards to fan
- Provides tamper-resistant application
- Prongs expand to hold securely as pin is driven in
- Single-operation front mounting saves time and money

Item No.	Ø Hole		Total Holding Thickness		Installation Tool	Bulk Pack Qty.
	in	mm	in	mm		
FR-1	0.137 - 0.138	3.49 - 3.51	0.807 - 0.846	20.5 - 21.5	61PRT0125	1000

**HSR Series
Heat Sink Spring Mount Rivet**

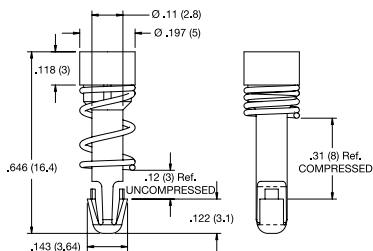


Specifications:

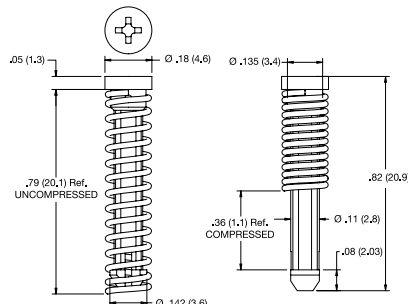
- Material: UL94 V-2 Nylon 6/6
- Color: Natural

Features:

- Fastens a heat sink to a processor chip on a PCB
- The spring provides continuous pressure to the heat sink until thermal adhesive cures
- HSR-2 can be installed by using a phillips head screwdriver



HSR-1



HSR-2

Item No.	Heat Sink Ø Hole		PCB Ø Hole		Spring Material	Bulk Pack Qty.
	in	mm	in	mm		
HSR-1	0.125 - 0.157	3.18 - 4.0	0.118	3.0	Spring Steel, Chrome Plating	1000
HSR-2	0.120 - 0.140	3.05 - 3.50	0.122	13.1	Stainless Steel	1000



RIVETS

RP/PPR Series Push Rivet

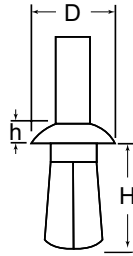


Fig. 1

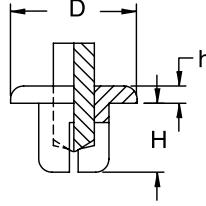
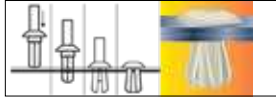


Fig. 2

Installation Tool



Installation Tool	Item No.
61PRT0125	PPR-5
	PPR-1
	PPR-93-7
	PPR-93-14
61PRT0150	PPR-2
	PPR-9
	PPR-4



Specifications:

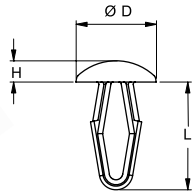
- Material: See Table
- Color: See Table

Features:

- Install by placing rivet into hole and pushing plunger into the rivet to expand legs to lock in place

Item No.		Ø Hole		Panel Thickness		Ø D		h		H		Fig.	Material	Bulk Pack Qty.	
Black	White	Natural	in	mm	in	mm	in	mm	in	mm	in				mm
• 093011059902	—	• 093011000002	0.118	3.0	0.039 - 0.157	1.0 - 4.0	0.197	5.0	0.051	1.3	0.224	5.7	1	Nylon 6/6	250
PPR-3055B	—	—	0.118	3.0	0.118 - 0.157	3.0 - 4.0	0.228	5.8	0.079	2.0	0.220	5.6	2	Nylon 6	1000
RP100B	RP100W	—	0.118	3.0	0.079 - 0.118	2.0 - 3.0	0.118	3.0	0.079	2.0	0.177	4.5	2	Nylon 6	1000
RP105B	RP105W	—	0.118	3.0	0.118 - 0.157	3.0 - 4.0	0.230	5.8	0.079	2.0	0.220	5.6	2	Nylon 6	1000
• 172315511302	• 172315569902	—	0.122	3.1	0.118 - 0.157	3.0 - 4.0	0.228	5.8	0.063	1.6	0.217	5.5	2	Nylon 6/6,POM	250
• 093012059902	—	• 093012000002	0.138	3.5	0.039 - 0.197	1.0 - 5.0	0.236	6.0	0.051	1.3	0.268	6.8	1	Nylon 6/6	250
• 093000269902	—	• 093000200002	0.142	3.6	0.079 - 0.217	2.0 - 5.5	0.303	7.7	0.079	2.0	0.276	7.0	1	Nylon 6/6	250
• 093000469902	—	—	0.157	4.0	0.157-0.256	4.0 - 6.5	0.256	6.5	0.256	6.5	0.315	8.0	1	Nylon 6/6	250
• 093013059902	—	• 093013000002	0.157	4.0	0.059 - 0.236	1.5 - 6.0	0.256	6.5	0.059	1.5	0.311	7.9	1	Nylon 6/6	250
PPR-4050B	RP110W	—	0.157	4.0	0.098 - 0.138	2.5 - 3.5	0.315	8.0	0.087	2.2	0.197	5.0	2	Nylon 6	1000
RP115B	RP115W	—	0.157	4.0	0.138 - 0.177	3.5 - 4.5	0.157	4.0	0.091	2.3	0.236	6.0	2	Nylon 6	1000
• 172485069902	• 172485011302	—	0.189	4.8	0.047 - 0.118	1.2 - 3.0	0.386	9.8	0.142	3.6	0.197	5.0	2	Nylon 6/6,POM	250
• 093001069902	—	• 093001000002	0.189	4.8	0.063 - 0.185	1.6 - 4.7	0.343	8.7	0.098	2.5	0.291	7.4	1	Nylon 6/6	250
PPR-4850B	—	—	0.189	4.8	0.047 - 0.157	1.2 - 3.0	0.390	9.9	0.130	3.3	0.201	5.1	2	Nylon 6	1000
PPR-2B	—	PPR-2	0.189	4.8	0.157 - 0.280	4.0 - 7.1	0.429	10.9	0.059	1.5	0.382	9.7	1	Nylon 6/6	1000
PPR-5B	PPR-5	—	0.189	4.8	0.039 - 0.374	1.0 - 9.5	0.280	7.1	0.063	1.6	0.421	10.7	1	Nylon 6/6	1000
• 093014000002	—	• 093014059902	0.197	5.0	0.059 - 0.276	1.5 - 7.0	0.335	8.5	0.071	1.8	0.362	9.2	1	Nylon 6/6	250
PPR-93-14B	—	—	0.197	5.0	0.118 - 0.276	3.0 - 7.0	0.437	11.1	0.079	2.0	0.433	11.0	1	Nylon 6/6	1000
PPR-93-7B	—	PPR-93-7	0.197	5.0	0.059 - 0.197	1.5 - 5.0	0.280	7.1	0.079	2.0	0.291	7.4	1	Nylon 6/6	1000
PPR-5060B	RP135W	—	0.197	5.0	0.118 - 0.157	3.0 - 4.0	0.370	9.4	0.110	2.8	0.236	6.0	2	Nylon 6	1000
RP130B	RP130W	—	0.197	5.0	0.157 - 0.197	4.0 - 5.0	0.197	5.0	0.110	2.8	0.197	5.0	2	Nylon 6	1000
PPR-5080B	—	—	0.197	5.0	0.197 - 0.236	5.0 - 6.0	0.370	9.4	0.110	2.8	0.315	8.0	2	Nylon 6	1000
• 172516069902	• 172516011302	—	0.201	5.1	0.118 - 0.157	3.0 - 4.0	0.374	9.5	0.110	2.8	0.236	6.0	2	Nylon 6/6,POM	250
• 172517011302	• 172517011302	—	0.201	5.1	0.157 - 0.197	4.0 - 5.0	0.374	9.5	0.098	2.5	0.276	7.0	2	Nylon 6/6,POM	250
RP140B	RP140W	—	0.201	5.1	0.157 - 0.197	4.0 - 5.0	0.197	5.0	0.110	2.8	0.276	7.0	2	Nylon 6	1000
RP145B	RP145W	—	0.201	5.1	0.197 - 0.236	5.0 - 6.0	0.197	5.0	0.110	2.8	0.315	8.0	2	Nylon 6	1000
• 172518069902	17218011302	—	0.201	5.1	0.197 - 0.236	5.0 - 6.0	0.374	9.5	0.110	2.8	0.315	8.0	2	Nylon 6/6,POM	250
RP150B	RP150W	—	0.201	5.1	0.236 - 0.276	6.0 - 7.0	0.197	5.0	0.110	2.8	0.354	9.0	2	Nylon 6	1000
PPR-5070B	—	—	0.201	5.1	0.157 - 0.197	4.0 - 5.0	0.370	9.4	0.110	2.8	0.276	7.0	2	Nylon 6	1000
RP155B	RP155W	—	0.201	5.1	0.276 - 0.315	7.0 - 8.0	0.197	5.0	0.110	2.8	0.394	10.0	2	Nylon 6	1000
PPR-1B	—	PPR-1	0.217	5.5	0.098 - 0.157	2.5 - 4.0	0.370	9.4	0.079	2.0	0.449	11.4	1	Nylon 6/6	1000
• 093015059902	—	• 093015000002	0.236	6.0	0.079 - 0.315	2.0 - 8.0	0.394	10.0	0.087	2.2	0.413	10.5	1	Nylon 6/6	250
• 093002469902	—	• 093002400002	0.236	6.0	0.118 - 0.276	3.0 - 7.0	0.433	11.0	0.079	2.0	0.394	10.0	1	Nylon 6/6	250
• PPR-6060B	—	—	0.236	6.0	0.098 - 0.157	2.5 - 4.0	0.429	10.9	0.059	1.5	0.240	6.1	2	LDPE/HDPE	1000
• 172616069902	• 172616000002	—	0.240	6.1	0.098 - 0.157	2.5 - 4.0	0.433	11.0	0.063	1.6	0.236	6.1	2	Nylon 6/6,POM	250
—	—	PPR-4	0.252	6.4	0.280 - 0.500	7.1 - 12.7	0.569	11.9	0.079	2.0	0.622	15.8	1	Nylon 6/6	1000
—	—	PPR-9	0.252	6.4	0.059 - 0.252	1.5 - 6.4	0.437	11.1	0.185	4.7	0.366	9.3	1	Nylon 6/6	1000
• 093002669902	—	• 093002600002	0.252	6.4	0.157 - 0.374	4.0 - 9.5	0.433	11.0	0.079	2.0	0.472	12.0	1	Nylon 6/6	250
• 093016059902	—	• 093016000002	0.189	4.8	0.098 - 0.354	2.5 - 9.0	0.472	12.0	0.102	2.6	0.465	11.8	1	Nylon 6/6	250
• 093000869902	—	• 093000800002	0.189	4.8	0.157 - 0.343	4.0 - 8.7	0.189	4.8	0.047	1.2	0.433	11.0	1	Nylon 6/6	250
• 093001869902	—	• 093001800002	0.28	7.1	0.157 - 0.472	4.0 - 12.0	0.669	17.0	0.098	2.5	0.689	17.5	1	Nylon 6/6	250
• 093017059902	—	• 093017059902	0.315	8.0	0.118 - 0.394	3.0 - 10.0	0.531	13.5	0.118	3.0	0.512	13.0	1	Nylon 6/6	250

DF Series Drive Fastener



Specifications:

- Material: See Table
- Color: Natural

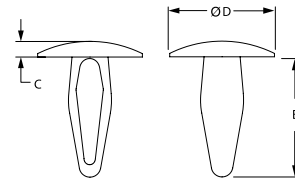
Features:

- Multi-purpose front loaded fastener
- Can be used as a decorative hole plug
- Inserts easily by hand
- Hollow body increases flexibility for ease of insertion and removal

Item No.		Ø Hole		Total Holding Thickness		Ø D		H		L Ref.		Bulk Pack Qty.
UL94 HB Acetal	UL94 V-0 Nylon 6/6	in	mm	in	mm	in	mm	in	mm	in	mm	
DF-137-010	DFVO-137-010	0.126	3.2	0.039 - 0.177	1.0 - 4.5	0.315	8.0	0.059	1.5	0.512	13.0	1000
DF-137-020	DFVO-137-020	0.153	3.9	0.039 - 0.197	1.0 - 5.0	0.354	9.8	0.063	1.6	0.551	14.0	1000
DF-137-030	DFVO-137-030	0.185	4.7	0.039 - 0.216	1.0 - 5.5	0.394	10.0	0.067	1.7	0.590	15.0	1000
DF-137-031	DFVO-137-031	0.185	4.7	0.039 - 0.216	1.0 - 5.5	0.433	11.0	0.114	2.9	0.590	15.0	1000
DF-137-040	DFVO-137-040	0.252	6.4	0.059 - 0.256	1.5 - 6.5	0.472	12.0	0.079	2.0	0.669	17.0	1000
DF-137-050	DFVO-137-050	0.307	7.8	0.059 - 0.275	1.5 - 7.0	0.551	14.0	0.087	2.2	0.748	19.0	1000
DF-137-060	DFVO-137-060	0.216	5.5	0.236 - 0.354	6.0 - 9.0	0.472	12.0	0.079	2.0	0.689	17.5	1000



**MMB/ARW/091/AC Series
Mounting Button**

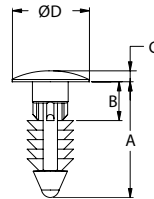


Specifications:

- Material: UL94 V-2 Nylon 6/6
- Color: See Table

Item No.	Ø Hole		Total Holding Thickness		Ø D		C		E		Bulk Pack Qty.			
	in	mm	in	mm	in	mm	in	mm	in	mm				
-	Black	Natural	27AC0010	0.062 - 0.065	1.6 - 1.7	0.010 - 0.031	0.3 - 0.8	0.100	2.5	0.125	3.2	0.020	0.5	1000
• 091 000 059 902	• 091 000 000 002	27AC0020	0.110	2.8	0.031 - 0.142	0.8 - 3.6	0.307	7.8	0.471	12.0	0.047	1.2	500	
-	-	27AC0020	0.120 - 0.135	2.5 - 3.2	0.062 - 0.125	1.6 - 3.2	0.270	6.9	0.330	8.4	0.040	1.0	1000	
• 091 000 159 902	• 091 000 100 002	MMB-125-01BK	0.125	3.2	0.080 - 0.100	2.0 - 2.5	0.272	6.9	0.331	8.4	0.039	1.0	1000	
-	-	MMB-125-01	0.132	3.4	0.060 - 0.130	1.6 - 3.2	0.280	7.1	0.390	9.9	0.059	1.5	1000	
• 091 000 259 902	• 091 000 200 002	MMB-130-01BK	0.136	3.5	0.120 - 0.160	2.9 - 4.0	0.406	10.3	0.437	11.1	0.067	1.7	1000	
-	-	MMB-130-01	0.138	3.5	0.094 - 0.228	2.4 - 5.8	0.299	7.6	0.512	13.0	0.043	1.1	500	
• 091 001 069 902	• 091 001 000 002	MMB-136-01BK	0.138	3.5	0.034 - 0.157	0.9 - 4.0	0.406	10.3	0.433	11.0	0.097	2.5	500	
-	-	MMB-136-01	0.138	3.5	0.034 - 0.157	0.9 - 4.0	0.406	10.3	0.433	11.0	0.189	4.8	500	
• 091 001 159 902	• 091 001 300 002	27AC0003	0.151 - 0.161	3.8 - 4.1	0.062 - 0.125	1.6 - 3.2	0.280	7.1	0.390	9.9	0.040	1.0	1000	
-	-	27AC000	0.151 - 0.161	3.8 - 4.1	0.062 - 0.145	1.6 - 3.7	0.280	7.1	0.400	10.2	0.080	2.0	1000	
• 091 001 259 902	• 091 001 200 002	27AC0001	0.182 - 0.192	4.6 - 4.9	0.062 - 0.125	1.6 - 3.2	0.360	9.1	0.400	10.2	0.060	1.5	1000	
-	-	27AC0006	0.182 - 0.192	4.6 - 4.9	0.310 - 0.330	7.8 - 7.9	0.370	9.4	0.531	13.5	0.060	1.5	1000	
• 091 001 359 902	• 091 001 300 002	27AC0011	0.182 - 0.192	4.6 - 4.9	0.165 - 0.185	4.2 - 4.7	0.375	9.5	0.515	13.1	0.060	1.5	1000	
-	-	27AC0031	0.182 - 0.192	4.6 - 4.9	0.200 - 0.250	5.1 - 6.4	0.270	6.9	0.525	13.3	0.070	1.8	1000	
• 091 001 459 902	• 091 001 400 002	MMB-187-01BK	0.187	4.7	0.098 - 0.157	2.5 - 4.0	0.500	12.7	0.429	10.9	0.087	2.2	1000	
-	-	MMB-187-01	0.189	4.8	0.035 - 0.157	0.9 - 4.0	0.374	9.5	0.433	11.0	0.059	1.5	500	
• 091 001 559 902	• 091 001 500 002	27AC0005	0.189	4.8	0.059 - 0.138	1.5 - 3.5	0.374	9.5	0.433	11.0	0.063	1.6	500	
-	-	27AC0007	0.197	5.0	0.118 - 0.236	3.0 - 6.0	0.543	13.8	0.567	14.4	0.087	2.2	250	
• 091 001 653 902	• 091 001 650 002	MMB-210-01BK	0.197	5.0	0.020 - 0.118	0.5 - 3.0	0.531	13.5	0.567	14.4	0.102	2.6	250	
-	-	MMB-210-01	0.210	5.3	0.097 - 0.157	2.5 - 4.0	0.551	14.0	0.551	14.0	0.118	3.0	1000	
• 091 001 769 902	• 091 001 700 002	27AC0005	0.213 - 0.223	5.4 - 5.7	0.125 - 0.187	3.2 - 4.7	0.370	9.4	0.450	11.4	0.060	1.5	1000	
-	-	27AC0007	0.213 - 0.223	5.4 - 5.7	0.062 - 0.125	1.6 - 3.2	0.370	9.4	0.540	13.7	0.060	1.5	1000	
• 091 001 859 902	• 091 001 800 002	MMB-132-01BK	0.215	5.5	0.062 - 0.157	1.6 - 3.2	0.370	9.4	0.453	11.5	0.059	1.5	1000	
-	-	MMB-132-01	0.228	5.8	0.236 - 0.335	6.0 - 8.5	0.591	15.0	0.709	18.0	0.118	3.0	250	
• 091 001 959 902	• 091 001 900 002	27AC0026	0.240 - 0.260	6.1 - 6.6	0.095 - 0.218	2.4 - 5.5	0.75	19.1	0.606	15.4	0.055	1.4	1000	
-	-	27AC0009	0.250 - 0.261	6.4 - 6.6	0.125 - 0.187	3.2 - 4.7	0.480	12.2	0.562	14.3	0.060	1.5	1000	
• 091 002 059 902	• 091 002 000 002	27AC0016	0.250 - 0.262	6.4 - 6.7	0.360 - 0.380	9.1 - 9.7	0.620	15.7	0.767	19.5	0.065	1.7	1000	
-	-	27AC0024	0.250 - 0.263	6.4 - 6.7	0.500 - 0.750	12.7 - 19.1	0.610	15.5	10.021	25.9	0.068	1.7	1000	
• 091 002 159 902	• 091 002 100 002	MMB-250-01BK	0.250	6.4	0.098 - 0.220	2.5 - 5.6	0.500	12.7	0.642	16.3	0.087	2.2	1000	
-	-	MMB-250-01	0.256	6.5	0.118 - 0.276	3.0 - 7.0	0.551	14.0	0.748	19.0	0.098	2.5	250	
• 091 002 259 902	• 091 002 200 002	27AC0022	0.260	6.6	0.031 - 0.197	0.8 - 5.0	0.500	12.7	0.571	14.5	0.067	1.7	250	
-	-	27AC0024	0.283	7.2	0.079 - 0.217	2.0 - 5.5	0.563	14.3	0.669	17.0	0.079	2.0	250	
• 091 002 359 902	• 091 002 300 002	27AC0024	0.370	9.4	0.118 - 0.354	3.0 - 9.0	0.787	20.0	0.945	24.0	0.102	2.6	250	

**PL Series
Pawl Lock**

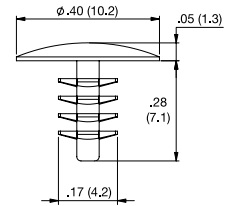
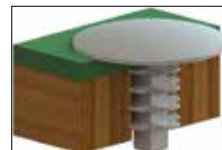
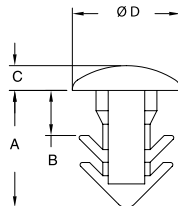


Specifications:

- Material: UL94 V-2 Nylon 6/6
- Color: Natural

Item No.	Ø Hole		B		Ø D		A		C		Bulk Pack Qty.
	in	mm	in	mm	in	mm	in	mm	in	mm	
PL-250-10-01	0.250	6.35	0.125	3.2	0.500	12.7	0.606	15.4	0.078	2.0	1000
PL-250-12-01	0.250	6.35	0.264	6.7	0.500	12.7	0.751	19.1	0.070	1.8	1000
PL-250-20-01	0.216	5.5	0.082	2.1	0.354	9.0	0.984	25.0	0.070	1.8	1000

**MPL/PPF Series
Mini Pawl Lock**



Specifications:

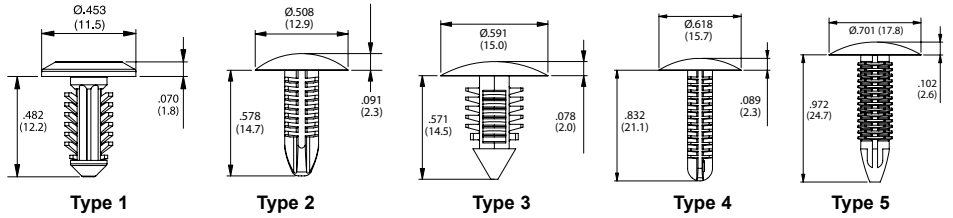
- Material: UL94 V-2 Nylon
- Color: Natural

Item No.	Ø Hole		B		Ø D		A		C		Bulk Pack Qty.
	in	mm	in	mm	in	mm	in	mm	in	mm	
MPL-3.2M-01	0.126	3.2	0.080	2.0	0.190	4.8	0.190	4.8	0.040	1.1	1000
MPL-32M/35M-01	0.126 - 0.138	3.2 - 3.5	0.080	2.0	0.190	4.8	0.200	5.2	0.040	1.1	1000
PPF-7-01	0.139	3.5	—	—	0.40	10.2	0.28	7.1	0.05	1.3	1000



FIR TREE RIVETS

BPF Series Barbed Push Fastener



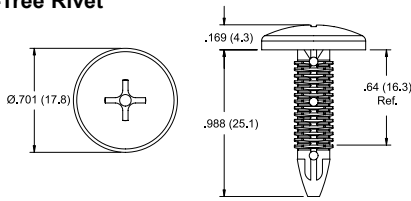
Specifications:

- Material: Nylon 6/6
- Color: Black



Item No.	Ø Hole		Panel Thickness		Head Dia.		Lock Length		Head Thickness		Type	Flame Rating	Pack Qty.
	in	mm	in	mm	in	mm	in	mm	in	mm			
BPF-A414	0.185	4.7	0.031 - 0.118	0.8 - 3.0	0.453	11.5	0.482	12.2	0.070	1.8	1	UL94V-0	1000
BPF-F4410	0.197	5.0	0.059 - 0.295	1.5 - 7.5	0.508	12.9	0.578	14.7	0.091	2.3	2	UL94V-2	1000
BPF-F3T31	0.197	5.0	0.079 - 0.394	2.0 - 10.0	0.618	15.7	0.832	21.1	0.089	2.3	4	UL94V-0	1000
BPF-F2495	0.276	7.0	0.125 - 0.236	3.2 - 6.0	0.591	15.0	0.571	14.5	0.078	2.0	3	UL94V-0	1000
BPF-F1G12	0.276	7.0	0.079 - 0.591	2.0 - 15.0	0.701	17.8	0.972	24.7	0.102	2.6	5	UL94V-0	1000

BPFR Series Removable Fir-Tree Rivet



Specifications:

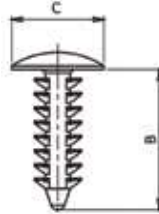
- Material: UL94 V-0 Nylon 6/6
- Color: Black

Features:

- Removable from threaded holes using a phillips head screwdriver

Item No.	Threaded Hole		Non-Threaded Hole		Medium Panel Thickness		Pack Qty.
	in	mm	in	mm	in	mm	
BPFR-1	5/16 (M8)	0.276	7.0	0.236	6.0	1000	

Fir Tree Rivets



Specifications:

- Material: Nylon 6/6
- Color: See Table

Features:

- Ideal for threaded, non-threaded, drilled or punched holes
- Designed to be non-removable

Item No.	Ø Hole		Panel Thickness		B		Ø C		Head Height		Pack Qty	
	in	mm	in	mm	in	mm	in	mm	in	mm		
• 468809	• 468833	0.118	3.0	0.157 - 0.650	4.0 - 16.5	0.728	18.5	0.217	5.5	0.039	1.0	1000
• 468811	• 468835	0.138	3.5	0.028 - 0.197	0.7 - 5.0	0.374	9.5	0.358	9.1	0.059	1.5	1000
• 167 102 069 902	• 167 102 000 002	0.138	3.5	0.028 - 0.197	0.7 - 5.0	0.374	9.5	0.358	9.1	—	—	100
• 167 102 569 902	• 167 102 500 002	0.157	4.0	0.028 - 0.236	0.7 - 6.0	0.433	11.0	0.358	9.1	—	—	100
• 27RT187500	-	0.188	4.8	0.025 - 0.365	0.6 - 9.3	0.500	12.7	0.375	9.5	0.070	1.8	1000
• 27RT187550	-	0.188	4.8	0.030 - 0.330	0.8 - 8.4	0.560	14.2	0.435	11.0	0.068	1.7	1000
• 27RT187700PPB	-	0.188	4.8	0.125 - 0.450	3.2 - 11.4	0.700	17.8	0.300	7.6	0.065	1.7	1000
• 460436	-	0.189	4.8	0.024 - 0.363	0.6 - 9.2	0.500	12.7	0.375	9.5	0.071	1.8	1000
• 460437	-	0.189	4.8	0.031 - 0.331	0.8 - 8.4	0.563	14.3	0.437	11.1	0.067	1.7	1000
• 468813	• 468837	0.189	4.8	0.028 - 0.512	0.7 - 13.0	0.681	17.3	0.433	11.0	0.067	1.7	1000
• 167 103 069 902	• 167 103 000 002	0.189	4.8	0.028 - 0.512	0.7 - 13.0	0.681	17.3	0.433	11.0	—	—	100
• 167 103 569 902	• 167 103 500 002	0.189	4.8	0.028 - 0.315	0.7 - 8.0	0.480	12.2	0.433	11.0	—	—	100
• 167 104 069 902	• 167 104 000 002	0.189	4.8	0.028 - 0.315	0.7 - 8.0	0.480	12.2	0.433	11.0	—	—	100
• 463609	-	0.193	4.9	0.094 - 0.291	2.4 - 7.4	0.492	12.5	0.441	11.2	0.043	1.1	100
• 468814	• 468838	0.197	5.0	0.047 - 0.236	1.2 - 6.0	0.433	11.0	0.630	16.0	0.079	2.0	1000
• 468815	• 468838	0.197	5.0	0.067 - 0.315	1.7 - 8.0	0.500	12.7	0.433	11.0	0.039	1.0	1000
• 167 104 569 902	• 167 104 500 002	0.217	5.5	0.059 - 0.559	1.5 - 14.2	0.776	19.7	0.650	16.5	—	—	100
• 167 105 069 902	• 167 105 000 002	0.217	5.5	0.059 - 0.559	1.5 - 14.2	0.776	19.7	0.512	13.0	—	—	100
• 468816	• 468840	0.236	6.0	0.079 - 0.315	2.0 - 8.0	0.500	12.7	0.610	15.5	0.039	1.0	1000
• 468817	• 468841	0.236	6.0	0.098 - 0.315	2.5 - 8.0	0.591	15.0	0.630	16.0	0.079	2.0	1000
• 468819	• 468843	0.236	6.0	0.138 - 0.748	3.5 - 19.0	0.945	24.0	0.500	12.7	0.059	1.5	1000
• 468820	• 468844	0.236	6.0	0.091 - 0.350	2.3 - 8.9	0.610	15.5	0.701	17.8	0.094	2.4	1000
• 468821	• 468845	0.236	6.0	0.098 - 0.472	2.5 - 12.0	0.803	20.4	0.701	17.8	0.098	2.5	1000
• 167 107 069 902	• 167 107 000 002	0.236	6.0	0.098 - 0.472	2.5 - 12.0	0.803	20.4	0.701	17.8	—	—	100
• 167 106 069 902	• 167 106 000 002	0.236	6.0	0.091 - 0.744	2.3 - 18.9	0.610	15.5	0.701	17.8	—	—	100
• 167 107 269 902	• 167 107 200 002	0.236	6.0	0.098 - 0.799	2.5 - 20.3	1.059	26.9	0.701	17.8	—	—	100
• 167 106 569 902	• 167 106 500 002	0.236	6.0	0.126 - 0.406	3.2 - 10.3	0.626	15.9	0.500	12.7	—	—	100
• 460439	-	0.250	6.4	0.106 - 0.299	2.7 - 7.6	0.437	11.1	0.701	17.8	0.098	2.5	1000
• 460440	-	0.250	6.4	0.150 - 0.531	3.8 - 13.5	0.744	18.9	0.701	17.8	0.106	2.7	1000
• 27RT250440	-	0.250	6.4	0.105 - 0.300	2.7 - 7.6	0.470	11.9	0.700	17.8	0.100	2.5	1000
• 27RT250800	-	0.250	6.4	0.150 - 0.535	3.8 - 13.6	0.780	19.8	0.700	17.8	0.100	2.5	1000
• 468824	• 468848	0.252	6.4	0.106 - 0.287	2.7 - 7.3	0.626	15.9	0.752	19.1	0.031	0.8	1000
• 468826	• 468850	0.276	7.0	0.079 - 0.984	2.0 - 25.0	1.370	34.8	1.181	30.0	0.087	2.2	1000
• 167 107 569 902	• 167 107 500 002	0.276	7.0	0.059 - 0.551	1.5 - 14.0	0.835	21.2	0.748	19.0	—	—	100
• 167 108 069 902	• 167 108 000 002	0.276	7.0	0.059 - 1.000	1.5 - 25.4	1.201	30.5	0.748	19.0	—	—	100
• 468828	• 468852	0.276	7.0	0.276 - 0.283	7.0 - 7.2	0.744	18.9	0.626	15.9	0.039	1.0	1000
• 27RT2811000	-	0.281	7.1	0.093 - 0.500	2.4 - 12.7	0.890	22.6	0.625	15.9	0.110	2.8	1000
• 495230	• 497397	0.283	7.2	0.059 - 0.551	1.5 - 14.0	0.835	21.2	0.748	19.0	0.094	2.4	1000
• 495231	• 495233	0.283	7.2	0.059 - 1.000	1.5 - 25.4	1.201	30.5	0.748	19.0	0.079	2.0	1000
• 468799	-	0.295	7.5	0.106 - 0.669	2.7 - 17.0	0.827	21.0	0.748	19.0	0.079	2.0	1000
• 460441	-	0.307	7.8	0.094 - 0.500	2.4 - 12.7	0.890	22.6	0.626	15.9	0.110	2.8	1000
• 468829	• 468853	0.315	8.0	0.130 - 0.500	3.3 - 12.7	0.661	16.8	0.500	12.7	0.059	1.5	1000
• 167 013 069 902	• 167 013 000 002	0.315	8.0	0.130 - 0.500	3.3 - 12.7	0.661	16.8	0.500	12.7	—	—	100
• 468830	-	0.343	8.7	0.055 - 0.512	1.4 - 13.0	0.752	19.1	0.630	16.0	0.091	2.3	1000
• 167 108 569 902	-	0.343	8.7	0.055 - 0.512	1.4 - 13.0	0.752	19.1	0.630	16.0	—	—	100
• 468831	• 468855	0.394	10.0	0.059 - 0.787	1.5 - 20.0	1.110	28.2	0.858	21.8	0.138	3.5	1000
• 167 109 569 902	• 167 109 500 002	0.394	10.0	0.059 - 0.787	1.5 - 20.0	1.110	28.2	0.858	21.8	—	—	100
• 167 109 069 902	• 167 109 000 002	0.394	10.0	0.114 - 0.567	2.9 - 14.4	0.819	20.8	1.000	25.4	—	—	100



FIR TREE RIVETS

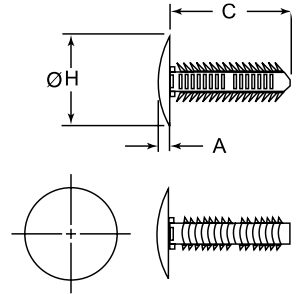
XT/RBF Series
Fir Tree Clip Fastener

Specifications:

- Material: UL94 V-2 Nylon 6/6
- Color: Black

Features:

- Ribbed design ensures fast and easy installation while securely holding into various materials like wood, metal, foam, rubber and plastic
- When pushed into a hole the flexible ribs deflect then spring back to lock securely in place

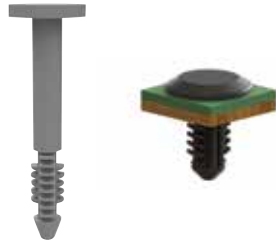


Item No.	Ø Hole		Panel Thickness		Ø H		C		A		Pack Qty.
	n	mm	in	mm	in	mm	in	mm	in	mm	
XT1250125A	0.125	3.2	0.062 - 0.125	1.6 - 3.2	0.344	8.7	0.208	5.3	0.062	1.6	1000
XT1250250A	0.125	3.2	0.062 - 0.250	1.6 - 6.4	0.344	8.7	0.321	8.2	0.062	1.6	1000
XT1250375A	0.125	3.2	0.062 - 0.375	1.6 - 9.5	0.344	8.7	0.458	11.6	0.062	1.6	1000
RBF-4-8-6-8	0.157	4.0	0.080 - 0.170	2.1 - 4.3	0.315	8.0	0.339	8.6	0.039	1.0	1000
RBF-4-8-6-12	0.157	4.0	0.080 - 0.170	2.1 - 4.3	0.472	12.0	0.339	8.6	0.059	1.5	1000
RBF-4-8-6-16	0.157	4.0	0.080 - 0.170	2.1 - 4.3	0.630	16.0	0.339	8.6	0.079	2.0	1000
RBF-4-11-1-8	0.157	4.0	0.080 - 0.280	2.1 - 7.2	0.315	8.0	0.437	11.1	0.039	1.0	1000
RBF-4-11-1-12	0.157	4.0	0.080 - 0.280	2.1 - 7.2	0.472	12.0	0.437	11.1	0.059	1.5	1000
RBF-4-11-1-16	0.157	4.0	0.080 - 0.280	2.1 - 7.2	0.630	16.0	0.437	11.1	0.079	2.0	1000
RBF-4-15-8	0.157	4.0	0.220 - 0.420	5.7 - 10.7	0.315	8.0	0.591	15.0	0.039	1.0	1000
RBF-4-15-12	0.157	4.0	0.220 - 0.420	5.7 - 10.7	0.472	12.0	0.591	15.0	0.059	1.5	1000
RBF-4-15-16	0.157	4.0	0.220 - 0.420	5.7 - 10.7	0.630	16.0	0.591	15.0	0.079	2.0	1000
RBF-4-8-8-6-8	0.188	4.8	0.080 - 0.170	2.1 - 4.3	0.315	8.0	0.339	8.6	0.039	1.0	1000
RBF-4-8-8-6-12	0.188	4.8	0.080 - 0.170	2.1 - 4.3	0.472	12.0	0.339	8.6	0.059	1.5	1000
RBF-4-8-8-6-16	0.188	4.8	0.080 - 0.170	2.1 - 4.3	0.630	16.0	0.339	8.6	0.079	2.0	1000
XT1880250A	0.188	4.8	0.062 - 0.250	1.6 - 6.4	0.500	12.7	0.348	8.8	0.078	2.0	1000
RBF-4-8-11-1-8	0.188	4.8	0.080 - 0.280	2.1 - 7.2	0.315	8.0	0.437	11.1	0.039	1.0	1000
RBF-4-8-11-1-12	0.188	4.8	0.080 - 0.280	2.1 - 7.2	0.472	12.0	0.437	11.1	0.059	1.5	1000
RBF-4-8-11-1-16	0.188	4.8	0.080 - 0.280	2.1 - 7.2	0.630	16.0	0.437	11.1	0.079	2.0	1000
XT1880375A	0.188	4.8	0.062 - 0.375	1.6 - 9.5	0.500	12.7	0.473	12.0	0.078	2.0	1000
RBF-4-8-15-8	0.188	4.8	0.220 - 0.420	5.7 - 10.7	0.315	8.0	0.591	15.0	0.039	1.0	1000
RBF-4-8-15-12	0.188	4.8	0.220 - 0.420	5.7 - 10.7	0.472	12.0	0.591	15.0	0.059	1.5	1000
RBF-4-8-15-16	0.188	4.8	0.220 - 0.420	5.7 - 10.7	0.630	16.0	0.591	15.0	0.079	2.0	1000
XT1880500A	0.188	4.8	0.062 - 0.500	1.6 - 12.7	0.500	12.7	0.598	15.2	0.078	2.0	1000
XT1880625A	0.188	4.8	0.062 - 0.625	1.6 - 15.9	0.500	12.7	0.723	18.4	0.078	2.0	1000
XT1880750A	0.188	4.8	0.062 - 0.750	1.6 - 19.1	0.500	12.7	0.848	21.5	0.078	2.0	1000
RBF-6-4-8-6-8	0.250	6.4	0.080 - 0.170	2.1 - 4.3	0.315	8.0	0.339	8.6	0.039	1.0	1000
RBF-6-4-8-6-12	0.250	6.4	0.080 - 0.170	2.1 - 4.3	0.472	12.0	0.339	8.6	0.059	1.5	1000
RBF-6-4-8-6-16	0.250	6.4	0.080 - 0.170	2.1 - 4.3	0.630	16.0	0.339	8.6	0.079	2.0	1000
XT2500250A	0.250	6.4	0.062 - 0.250	1.6 - 6.4	0.700	17.8	0.391	9.9	0.100	2.5	1000
RBF-6-4-11-1-8	0.250	6.4	0.080 - 0.280	2.1 - 7.2	0.315	8.0	0.437	11.1	0.039	1.0	1000
RBF-6-4-11-1-12	0.250	6.4	0.080 - 0.280	2.1 - 7.2	0.472	12.0	0.437	11.1	0.059	1.5	1000
RBF-6-4-11-1-16	0.250	6.4	0.080 - 0.280	2.1 - 7.2	0.630	16.0	0.437	11.1	0.079	2.0	1000
XT2500375A	0.250	6.4	0.062 - 0.375	1.6 - 9.5	0.700	17.8	0.506	12.9	0.100	2.5	1000
RBF-6-4-15-8	0.250	6.4	0.220 - 0.420	5.7 - 10.7	0.315	8.0	0.591	15.0	0.039	1.0	1000
RBF-6-4-15-12	0.250	6.4	0.220 - 0.420	5.7 - 10.7	0.472	12.0	0.591	15.0	0.059	1.5	1000
RBF-6-4-15-16	0.250	6.4	0.220 - 0.420	5.7 - 10.7	0.630	16.0	0.591	15.0	0.079	2.0	1000
XT2500500A	0.250	6.4	0.062 - 0.500	1.6 - 12.7	0.700	17.8	0.630	16.0	0.100	2.5	1000
XT2500625A	0.250	6.4	0.062 - 0.625	1.6 - 15.9	0.700	17.8	0.755	19.2	0.100	2.5	1000
XT2500750A	0.250	6.4	0.062 - 0.750	1.6 - 19.1	0.700	17.8	0.880	22.4	0.100	2.5	1000
XT2500875A	0.250	6.4	0.062 - 0.875	1.6 - 22.2	0.700	17.8	1.004	25.5	0.100	2.5	1000
XT2501000A	0.250	6.4	0.062 - 1.000	1.6 - 25.4	0.700	17.8	1.120	28.4	0.100	2.5	1000
XT2501250A	0.250	6.4	0.062 - 1.250	1.6 - 31.8	0.700	17.8	1.380	35.1	0.100	2.5	1000
XT2501500A	0.250	6.4	0.062 - 1.500	1.6 - 38.1	0.700	17.8	1.632	41.5	0.100	2.5	1000
XT2501750A	0.250	6.4	0.062 - 1.750	1.6 - 44.5	0.700	17.8	1.882	47.8	0.100	2.5	1000
XT2502000A	0.250	6.4	0.062 - 2.000	1.6 - 50.8	0.787	20.0	2.132	54.2	0.100	2.5	1000
XT2810250A	0.281	7.1	0.062 - 0.250	1.6 - 6.4	0.787	20.0	0.384	9.8	0.100	2.5	1000
RBF-7-1-11-1-8	0.281	7.1	0.080 - 0.280	2.1 - 7.2	0.315	8.0	0.437	11.1	0.039	1.0	1000
RBF-7-1-11-1-12	0.281	7.1	0.080 - 0.280	2.1 - 7.2	0.472	12.0	0.437	11.1	0.059	1.5	1000
RBF-7-1-11-1-16	0.281	7.1	0.080 - 0.280	2.1 - 7.2	0.630	16.0	0.437	11.1	0.079	2.0	1000
XT2810375A	0.281	7.1	0.062 - 0.375	1.6 - 9.5	0.787	20.0	0.515	13.1	0.100	2.5	1000
RBF-7-1-15-8	0.281	7.1	0.150 - 0.420	3.8 - 10.7	0.315	8.0	0.591	15.0	0.039	1.0	1000
RBF-7-1-15-12	0.281	7.1	0.150 - 0.420	3.8 - 10.7	0.472	12.0	0.591	15.0	0.059	1.5	1000
RBF-7-1-15-16	0.281	7.1	0.150 - 0.420	3.8 - 10.7	0.630	16.0	0.591	15.0	0.079	2.0	1000
XT2810500A	0.281	7.1	0.062 - 0.500	1.6 - 12.7	0.787	20.0	0.642	16.3	0.100	2.5	1000
RBF-7-1-19-8	0.281	7.1	0.270 - 0.560	6.9 - 14.2	0.315	8.0	0.748	19.0	0.039	1.0	1000
RBF-7-1-19-12	0.281	7.1	0.270 - 0.560	6.9 - 14.2	0.472	12.0	0.748	19.0	0.059	1.5	1000
RBF-7-1-19-16	0.281	7.1	0.270 - 0.560	6.9 - 14.2	0.630	16.0	0.748	19.0	0.079	2.0	1000
XT2810625A	0.281	7.1	0.062 - 0.625	1.6 - 15.9	0.787	20.0	0.767	19.5	0.100	2.5	1000
XT2810750A	0.281	7.1	0.062 - 0.750	1.6 - 19.1	0.787	20.0	0.894	22.7	0.100	2.5	1000
XT2810875A	0.281	7.1	0.062 - 0.875	1.6 - 22.2	0.787	20.0	1.021	25.9	0.100	2.5	1000
XT2811000A	0.281	7.1	0.062 - 1.000	1.6 - 25.4	0.787	20.0	1.147	29.1	0.100	2.5	1000
XT2811250A	0.281	7.1	0.062 - 1.250	1.6 - 31.8	0.787	20.0	1.401	35.6	0.100	2.5	1000
XT2811500A	0.281	7.1	0.062 - 1.500	1.6 - 38.1	0.787	20.0	1.651	41.9	0.100	2.5	1000
XT2811750A	0.281	7.1	0.062 - 1.750	1.6 - 44.5	0.787	20.0	1.901	48.3	0.100	2.5	1000
XT2812000A	0.281	7.1	0.062 - 2.000	1.6 - 50.8	0.787	20.0	2.153	54.7	0.100	2.5	1000
27XT3120250	0.312	7.9	0.062 - 0.250	1.6 - 6.35	0.874	22.2	0.410	10.4	0.100	2.5	1000
27XT3120375	0.312	7.9	0.062 - 0.375	1.6 - 9.53	0.874	22.2	0.529	13.4	0.100	2.5	1000
27XT3120625	0.312	7.9	0.062 - 0.625	1.6 - 15.9	0.874	22.2	0.783	19.9	0.100	2.5	1000
27XT3120750	0.312	7.9	0.062 - 0.750	1.6 - 19.1	0.874	22.2	0.894	22.7	0.100	2.5	1000
27XT3120875	0.312	7.9	0.062 - 0.875	1.6 - 22.2	0.874	22.2	1.036	26.3	0.100	2.5	1000
27XT3121000	0.312	7.9	0.062 - 1.000	1.6 - 25.4	0.874	22.2	1.163	29.5	0.100	2.5	1000
27XT3121250	0.312	7.9	0.062 - 1.250	1.6 - 31.8	0.874	22.2	1.416	36.0	0.100	2.5	1000
27XT3121500	0.312	7.9	0.062 - 1.500	1.6 - 38.1	0.874	22.2	1.669	42.4	0.100	2.5	1000
XT3121750A	0.312	7.9	0.062 - 1.750	1.6 - 44.5	0.870	22.2	1.930	49.0	0.100	2.5	1000
XT3750250A	0.375	9.5	0.062 - 0.250	1.6 - 6.35	1.000	25.4	0.445	11.3	0.100	2.5	1000
XT3750375A	0.375	9.5	0.062 - 0.375	1.6 - 9.50	1.000	25.4	0.570	14.5	0.100	2.5	1000
XT3750500A	0.375	9.5	0.062 - 0.500	1.6 - 9.53	1.000	25.4	0.689	17.5	0.100	2.5	1000
XT3750625A	0.375	9.5	0.062 - 0.625	1.6 - 12.7	1.000	25.4	0.816	20.7	0.100	2.5	1000
XT3750750A	0.375	9.5	0.062 - 0.750	1.6 - 19.1	1.000	25.4	0.943	24.0	0.100	2.5	1000
XT3750875A	0.375	9.5	0.062 - 0.875	1.6 - 22.2	1.000	25.4	1.070	27.2	0.100	2.5	1000
XT3751000A	0.375	9.5	0.062 - 1.000	1.6 - 25.4	1.000	25.4	1.196	30.4	0.100	2.5	1000
XT3751250A	0.375	9.5	0.062 - 1.250	1.6 - 31.8	1.000	25.4	1.451	36.9	0.100	2.5	1000
XT3751500A	0.375	9.5	0.062 - 1.500	1.6 - 38.1	1.000	25.4	1.705	43.3	0.100	2.5	1000
XT3751750A	0.375	9.5	0.062 - 1.750	1.6 - 44.5	1.000	25.4	1.959	49.8	0.100	2.5	1000
XT3752000A	0.375	9.5	0.062 - 2.000	1.6 - 50.8	1.000	25.4	2.213	56.2	0.100	2.5	1000



FIR TREE RIVETS

BHF Series Fir Tree Clip Fastener



Specifications:

- Material: UL94 V-2 Nylon 6/6
- Color: Black

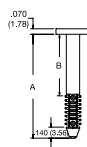


Fig. 1

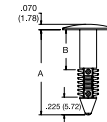


Fig. 2

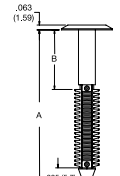
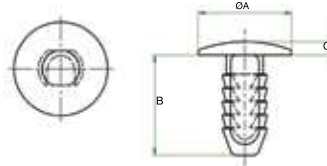


Fig. 3

Item No.	Fig.	Ø Hole		Panel Thickness		B		A		Pack Qty.
		in	mm	in	mm	in	mm	in	mm	
BHF-1	1	0.187	4.8	0.035 - 0.385	0.9 - 9.8	0.02	.5	0.560	14.2	1000
BHF-2	1	0.187	4.8	0.125 - 0.475	3.2 - 12.1	0.11	2.8	0.650	16.5	1000
BHF-3	1	0.187	4.8	0.425 - 0.775	10.8 - 19.7	0.41	10.4	0.950	24.1	1000
BHF-4	1	0.187	4.8	0.800 - 1.150	20.3 - 29.2	0.79	19.9	1.330	33.7	1000
BHF-5	2	0.250	6.4	0.035 - 0.335	0.9 - 8.5	0.02	.5	0.590	15.1	1000
BHF-6	2	0.250	6.4	0.095 - 0.395	2.4 - 10.0	0.08	2.0	0.650	16.6	1000
BHF-7	2	0.250	6.4	0.325 - 0.625	8.3 - 15.9	0.31	7.9	0.880	22.5	1000
BHF-8	2	0.250	6.4	0.525 - 0.825	13.3 - 21.0	0.51	12.9	1.080	27.6	1000
BHF-9	3	0.281	7.1	0.075 - 0.475	1.9 - 12.1	0.06	1.5	0.740	18.7	1000
BHF-10	3	0.281	7.1	0.475 - 0.875	12.1 - 22.2	0.46	11.7	1.140	28.8	1000
BHF-11	3	0.281	7.1	0.075 - 1.025	1.9 - 26.0	0.06	1.5	1.280	32.6	1000
BHF-12	3	0.281	7.1	0.275 - 1.225	7.0 - 31.1	0.26	6.6	1.480	37.7	1000
BHF-13	3	0.281	7.1	0.575 - 1.525	14.6 - 38.7	0.56	14.2	1.780	45.3	1000
BHF-14	3	0.281	7.1	0.775 - 1.725	19.7 - 43.8	0.76	19.3	2.000	50.8	1000

092 Series Fir Tree Rivet



Specifications:

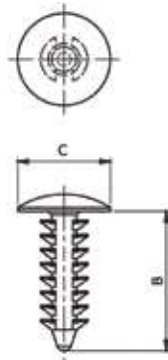
- Material: Nylon 6/6
- Color: See Table

Features:

- Easily installed by hand

Item No.	Ø Hole	Panel Thickness		Ø A		B		C		Pack Qty.	
		in	mm	in	mm	in	mm	in	mm		
092 0001 000 02	0.228	5.8	0.118 - 0.433	3.0 - 11.0	0.551	14.0	0.591	15.0	0.079	2.0	500
092 0002 000 02	0.228	5.8	0.118 - 0.591	3.0 - 15.0	0.630	16.0	0.748	19.0	0.079	2.0	500
092 0004 000 02	0.276	7.0	0.118 - 0.748	3.0 - 19.0	0.709	18.0	0.906	23.0	0.079	2.0	500

497 Series Fir Tree Rivets - Clear



Specifications:

- Material: Polypropylene
- Color: Clear

Features:

- Ideal for threaded, non-threaded, drilled or punched holes
- Designed to be non-removable
- Good for Point of Purchase displays

Item No.	Ø Hole		Panel Thickness		B		Ø C		Head Height		Pack Qty.
	in	mm	in	mm	in	mm	in	mm	in	mm	
497394	0.118	3.0	0.157 - 0.650	4.0 - 16.5	0.728	18.5	0.217	5.5	0.039	1.0	1000
495222	0.189	4.8	0.028 - 0.512	0.7 - 13.0	0.681	17.3	0.433	11.0	0.067	1.7	1000
495221	0.236	6.0	0.098 - 0.472	2.5 - 12.0	0.803	20.4	0.701	17.8	0.098	2.5	1000
497395	0.236	6.0	0.079 - 0.315	2.0 - 8.0	0.500	12.7	0.610	15.5	0.039	1.0	1000
497396	0.236	6.0	0.098 - 0.315	2.5 - 8.0	0.591	15.0	0.630	16.0	0.079	2.0	1000
495223	0.236	6.0	0.091 - 0.350	2.3 - 8.9	0.610	15.5	0.701	17.8	0.094	2.4	1000
495224	0.252	6.4	0.421 - 1.134	10.7 - 28.8	1.381	35.1	0.701	17.8	0.098	2.5	1000
495225	0.252	6.4	0.106 - 0.287	2.7 - 7.3	0.626	15.9	0.752	19.1	0.031	0.8	1000
495226	0.276	7.0	0.028 - 0.787	0.7 - 20.0	1.075	27.3	0.709	18.0	0.079	2.0	1000
495227	0.276	7.0	0.079 - 0.984	2.0 - 25.0	1.370	34.8	1.181	30.0	0.087	2.2	1000
497397	0.283	7.2	0.059 - 0.551	1.5 - 14.0	0.835	21.2	0.748	19.0	0.094	2.4	1000
497398	0.295	7.5	0.106 - 0.669	2.7 - 17.0	0.827	21.0	0.748	19.0	0.079	2.0	1000

FIR TREE RIVETS



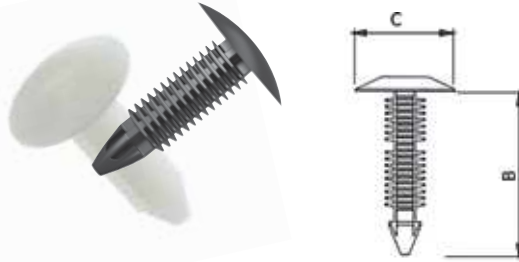
167 Series
Fir Tree Fasteners

Specifications:

- Material: Nylon 6/6
- Color: Natural or Black

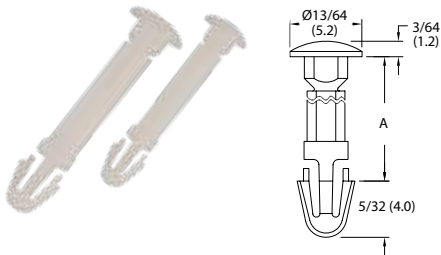
Features:

- Ideal for threaded, non-threaded, drilled or punched holes



Item No.		Ø Hole		Panel Thickness		B		Ø C		Pack Qty
Black	Natural	in	mm	in	mm	in	mm	in	mm	
167 201 069 902	167 201 000 002	0.106	2.7	0.059 - 0.157	1.5 - 4.0	0.276	7.0	0.236	6.0	100
167 201 569 902	167 201 500 002	0.106	2.7	0.059 - 0.315	1.5 - 8.0	0.433	11.0	0.236	6.0	100
167 202 069 902	167 202 000 002	0.106	2.7	0.059 - 0.591	1.5 - 15.0	0.709	18.0	0.236	6.0	100
167 002 069 902	167 002 000 002	0.118	3.0	0.138 - 0.248	3.5 - 6.3	0.307	7.8	0.236	6.0	100
167 002 569 902	167 002 500 002	0.118	3.0	0.157 - 0.472	4.0 - 12.0	0.571	14.5	0.217	5.5	100
167 002 769 902	167 002 700 002	0.118	3.0	0.157 - 0.650	4.0 - 16.5	0.728	18.5	0.213	5.4	100
167 203 069 902	167 203 000 002	0.130	3.3	0.059 - 0.177	1.5 - 4.5	0.315	8.0	0.394	10.0	100
167 003 069 902	167 003 000 002	0.157	4.0	0.035 - 0.315	0.9 - 8.0	0.531	13.5	0.374	9.5	100
167 204 069 902	167 204 000 002	0.161	4.1	0.039 - 0.098	1.0 - 2.5	0.236	6.0	0.472	12.0	100
167 204 569 902	167 204 500 002	0.161	4.1	0.059 - 0.217	1.5 - 5.5	0.394	10.0	0.472	12.0	100
167 205 069 902	167 205 000 002	0.161	4.1	0.079 - 0.394	2.0 - 10.0	0.591	15.0	0.472	12.0	100
167 003 569 902	167 003 500 002	0.187	4.8	0.035 - 0.209	0.9 - 5.3	0.437	11.1	0.433	11.0	100
167 004 069 902	167 004 000 002	0.189	4.8	0.098 - 0.598	2.5 - 15.2	0.701	17.8	0.469	11.9	100
167 004 569 902	167 004 500 002	0.189	4.8	0.079 - 0.394	2.0 - 10.0	0.642	16.3	0.433	11.0	100
167 005 069 902	167 005 000 002	0.197	5.0	0.047 - 0.236	1.2 - 6.0	0.433	11.0	0.630	16.0	100
167 005 569 902	167 005 500 002	0.197	5.0	0.067 - 0.315	1.7 - 8.0	0.500	12.7	0.433	11.0	100
—	167 006 000 002	0.197	5.0	0.059 - 0.480	1.5 - 12.2	0.701	17.8	0.748	19.0	50
167 206 069 902	167 206 000 002	0.220	5.6	0.079 - 0.276	2.0 - 7.0	0.472	12.0	0.512	13.0	100
167 206 569 902	167 206 500 002	0.220	5.6	0.059 - 0.591	1.5 - 15.0	0.787	20.0	0.512	13.0	100
167 207 069 902	167 207 000 002	0.220	5.6	0.039 - 10.063	1.0 - 27.0	1.260	32.0	0.512	13.0	100
167 208 069 902	167 208 000 002	0.232	5.9	0.079 - 0.217	2.0 - 5.5	0.433	11.0	0.669	17.0	100
167 208 569 902	167 208 500 002	0.232	5.9	0.039 - 0.394	1.0 - 10.0	0.591	15.0	0.669	17.0	100
167 209 069 902	167 209 000 002	0.232	5.9	0.079 - 0.748	2.0 - 19.0	0.945	24.0	0.669	17.0	100
167 006 569 902	167 006 500 002	0.236	6.0	0.079 - 0.315	2.0 - 8.0	0.500	12.7	0.610	15.5	100
167 006 769 902	—	0.236	6.0	0.094 - 0.319	2.4 - 8.1	0.500	12.7	0.748	19.0	100
167 007 069 902	—	0.236	6.0	0.098 - 0.394	2.5 - 10.0	0.709	18.0	0.512	13.0	100
167 007 569 902	167 007 500 002	0.236	6.0	0.138 - 0.748	3.5 - 19.0	0.945	24.0	0.500	12.7	100
167 008 569 902	167 008 500 002	0.236	6.0	0.067 - 10.252	1.7 - 31.8	1.441	36.6	1.000	25.4	100
167 009 069 902	167 009 000 002	0.252	6.4	0.035 - 10.043	0.9 - 26.5	1.500	38.1	0.496	12.6	100
167 210 069 902	167 210 000 002	0.269	6.8	0.059 - 0.354	1.5 - 9.0	0.531	14.0	0.512	13.0	100
167 010 069 902	167 010 000 002	0.276	7.0	0.051 - 0.441	1.3 - 11.2	0.705	17.9	0.937	23.8	100
167 011 069 902	167 011 000 002	0.276	7.0	0.094 - 0.469	2.4 - 11.9	0.744	18.9	0.626	15.9	100
167 011 569 902	167 011 500 002	0.276	7.0	0.098 - 0.866	2.5 - 22.0	1.311	33.3	0.598	15.2	100
167 012 069 902	167 012 000 002	0.276	7.0	0.051 - 0.902	1.3 - 22.9	1.260	32.0	0.760	19.3	100
167 012 569 902	167 012 500 002	0.276	7.0	0.531 - 0.921	13.5 - 23.4	1.189	30.2	1.252	31.8	100

SLPA Series
Snap Lock Pin with Arrowhead



Specifications:

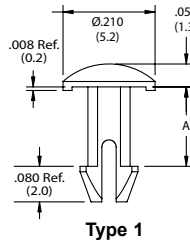
- Material: UL94 V-2 Nylon 6/6
- Color: Natural

Features:

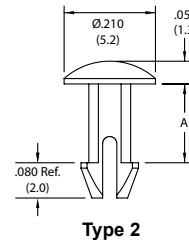
- Fixes connectors to PCB's
- Easily installed by hand

Item No.	Ø Hole		A		Pack Qty.
	in	mm	in	mm	
SLPA125-187-01	0.125	3.2	0.187	4.7	1000
SLPA125-250-01	0.125	3.2	0.250	6.4	1000
SLPA125-312-01	0.125	3.2	0.312	7.9	1000
SLPA125-375-01	0.125	3.2	0.375	9.5	1000
SLPA125-500-01	0.125	3.2	0.500	12.7	1000
SLPA125-625-01	0.125	3.2	0.625	15.9	1000
SLPA125-750-01	0.125	3.2	0.750	19.1	1000

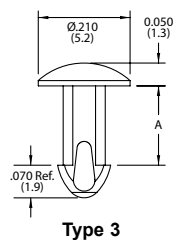
SLP Series
Snap Lock Pin



Type 1



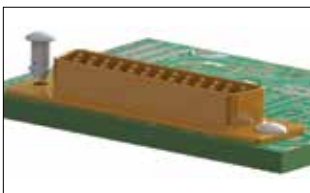
Type 2



Type 3

Specifications:

- Material: UL94 V-2 Nylon 6/6
- Color: Natural

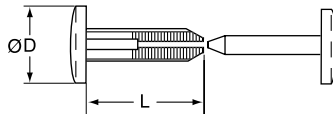


Item No.			Ø Hole		Panel Thickness A	Head Ø	Pack Qty.
Type 1	Type 2	Type 3	in	mm	in	in	
SLP100-177-01	SLP-1-177-01	SLP-2-177-01	0.098	0.177	0.210	1000	
SLP100-221-01	SLP-1-221-01	SLP-2-221-01	0.098	0.221	0.210	1000	
SLP100-236-01	SLP-1-236-01	SLP-2-236-01	0.098	0.236	0.210	1000	
SLP100-245-01	SLP-1-245-01	SLP-2-245-01	0.098	0.245	0.210	1000	
SLP100-307-01	SLP-1-307-01	SLP-2-307-01	0.098	0.307	0.210	1000	
SLP100-316-01	SLP-1-316-01	SLP-2-316-01	0.098	0.316	0.210	1000	
SLP100-330-01	SLP-1-330-01	SLP-2-330-01	0.098	0.33	0.210	1000	
SLP100-413-01	SLP-1-413-01	SLP-2-413-01	0.098	0.413	0.210	1000	
SLP100-638-01	SLP-1-638-01	SLP-2-638-01	0.098	0.638	0.210	1000	
—	SLP125-187-01	—	0.125	0.187	0.200	1000	



RATCHET FASTENERS

BR/QB Series Ratchet Fasteners



Specifications:

- Material: UL94 V-2 Nylon 6/6
- Color: See Table

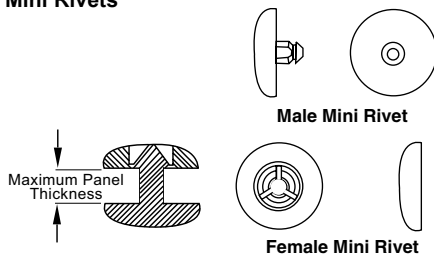
Features:

- Quick to install
- Interlocking teeth provide strong locking capability

Item No.		Ø D (Ref.)	L (Ref.)	Ø Hole	Panel Thickness	Pack Qty.
Natural	Black					
27QB375750N	27QB375750B	0.375	0.500	0.250	0.500 - 0.812	1000
27QB371000N	27QB371000B	0.375	0.750	0.250	0.780 - 1.375	1000
27QB625750N	27QB625750B	0.625	0.500	0.250	0.500 - 0.812	1000
27QB621000N	27QB621000B	0.625	0.750	0.250	0.780 - 1.375	1000
27QB375250N	27QB375250B	0.375	0.218	0.250	0.235 - 0.297	1000
27QB375375N	27QB375375B	0.375	0.343	0.250	0.346 - 0.500	1000
27QB625250N	27QB625250B	0.625	0.218	0.250	0.235 - 0.297	1000
27QB625375N	27QB625375B	0.625	0.343	0.250	0.346 - 0.500	1000

Item No.		Ø D (Ref.)	L (Ref.)	Ø Hole	Panel Thickness	Pack Qty.
Natural	Black					
BR2-226-01	BR2-226-01BK	0.406	0.226	0.281	0.235 - 0.297	1000
BR2-344-01	BR2-344-01BK	0.406	0.343	0.281	0.346 - 0.500	1000
BR2-488-01	BR2-488-01BK	0.406	0.500	0.281	0.500 - 0.812	1000
BR2-768-01	BR2-768-01BK	0.406	0.750	0.281	0.781 - 1.375	1000
BR1-226-01	BR1-226-01BK	0.750	0.226	0.281	0.235 - 0.297	1000
BR1-344-01	BR1-344-01BK	0.750	0.344	0.281	0.346 - 0.500	1000
BR1-488-01	BR1-488-01BK	0.750	0.488	0.281	0.500 - 0.812	1000
BR1-768-01	BR1-768-01BK	0.750	0.768	0.281	0.781 - 1.375	1000

MBR/MR Series Mini Rivets



Specifications:

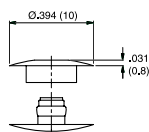
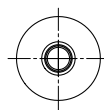
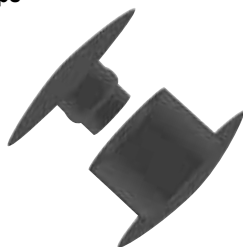
- Material: UL94 V-2 Nylon 6/6
- Color: See Table

Features:

- Quick to install by simply pressing together
- Male and female parts sold separately
- Ideal for outdoor environments
- Resistant to corrosion, oil, abrasion and most chemicals

Item No.		Ø Hole		Max Panel Thickness		Head Ø		Head Thickness		Mating Part	Pack Qty.
Natural	Black	in	mm	in	mm	in	mm	in	mm		
Male											
27MRM090020	27MRM090020B	0.094	2.4	0.02	0.51	0.375	9.5	0.075	1.9	27MRF09 or 27MRF09B	1000
27MRM090032	27MRM090032B	0.094	2.4	0.032	0.81	0.375	9.5	0.075	1.9	27MRF09 or 27MRF09B	1000
27MRM090045	27MRM090045B	0.094	2.4	0.045	1.14	0.375	9.5	0.075	1.9	27MRF09 or 27MRF09B	1000
27MRM090062	27MRM090062B	0.094	2.4	0.062	1.57	0.375	9.5	0.075	1.9	27MRF09 or 27MRF09B	1000
27MRM090075	27MRM090075B	0.094	2.4	0.075	1.57	0.375	9.5	0.075	1.9	27MRF09 or 27MRF09B	1000
27MRM090090	27MRM090090B	0.094	2.4	0.090	1.57	0.375	9.5	0.075	1.9	27MRF09 or 27MRF09B	1000
27MRM090112	27MRM090112B	0.094	2.4	0.125	3.18	0.375	9.5	0.075	1.9	27MRF09 or 27MRF09B	1000
27MRM090312	27MRM090312B	0.094	2.4	0.312	3.18	0.375	9.5	0.075	1.9	27MRF09 or 27MRF09B	1000
Female											
27MRF09	27MRF09B	—	—	—	—	0.375	9.5	0.075	1.9	27MRM09XXXX	1000
Male											
MBRP1-030-01	-	0.125	3.2	0.03	0.8	0.4	10.2	0.09	2.3	MBRR1-01	1000
27MRM125045	27MRM125045B	0.125	3.2	0.045	1.1	0.5	12.7	0.10	2.5	27MRF12 or 27MRF12B	1000
MBRP1-062-01	-	0.125	3.2	0.062	1.6	0.4	10.2	0.09	2.3	MBRR1-01	1000
MBRP1-100-01	-	0.125	3.2	0.100	2.5	0.4	10.2	0.09	2.3	MBRR1-01	1000
MBRP1-125-01	-	0.125	3.2	0.125	3.2	0.4	10.2	0.09	2.3	MBRR1-01	1000
27MRM125143	27MRM125143B	0.125	3.2	0.143	3.6	0.5	12.7	0.10	2.5	27MRF12 or 27MRF12B	1000
MBRP1-187-01	-	0.125	3.2	0.187	4.8	0.4	10.2	0.09	2.3	MBRR1-01	1000
MBRP1-250-01	-	0.125	3.2	0.250	6.4	0.4	10.2	0.09	2.3	MBRR1-01	1000
27MRM125325	27MRM125325B	0.125	3.2	0.325	8.3	0.5	12.7	0.10	2.5	27MRF12 or 27MRF12B	1000
Female											
MBRR1-01	-	—	—	—	—	0.4	10.2	0.10	2.5	MBRP1-XXX or RM	1000
27MRF12	27MRF12B	—	—	—	—	0.5	12.7	0.10	2.5	27MRM125XXXX	1000

8201 Series Male/Female Push Clips



Specifications:

- Material: Nylon 6/6
- Color: See Table

Features:

- Low profile on both sides of the assembly
- Holds flat panels together
- Fast and easy clip in design
- Pack quantity includes 1000 each of male and female parts

Item No.		Ø Hole		Maximum Panel Thickness		Pack Qty.
White	Black	in	mm	in	mm	
820 102 000 8VR	820 102 000 1VR	0.236	6.0	0.087	2.2	1000
820 103 000 8VR	820 103 000 1VR	0.236	6.0	0.126	3.2	1000
820 104 000 8VR	820 104 000 1VR	0.236	6.0	0.165	4.2	1000
820 105 000 8VR	820 105 000 1VR	0.236	6.0	0.205	5.2	1000



**8501 Series
SR1990 Snap Fasteners**

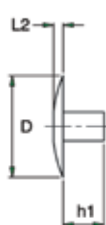


Specifications:

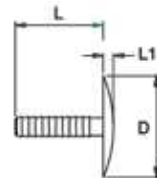
- Material:
Female Washer: Low-Density Polyethylene
Male Clip: Polypropylene
- Color: See Table

Features:

- Pack quantity includes 1000 each of male and female parts
- Ideal for fixing corrugated panel



Female Washer



Male Clip

Item No.			Ø Hole		Panel Thickness		Ø D		L	L1	L2	h1	Pack Qty.
Black	White	Clear	in	mm	in	mm	in	mm	in	in	in	in	
8502160901VR	8502160908VR	8502160900VR	0.315 - 0.787	8 - 20	0.236 - 0.394	6 - 10	1.181	30	0.551	0.118	0.118	0.236	1000
8502260901VR	8502260908VR	8502260900VR	0.315 - 0.787	8 - 20	0.236 - 0.394	6 - 22	1.181	30	1.102	0.118	0.118	0.236	1000
8502440901VR	8502440908VR	8502440900VR	0.315 - 0.787	8 - 20	0.787 - 1.575	20 - 40	1.181	30	1.732	0.118	0.118	0.236	1000
8501160901VR	8501160908VR	8501160900VR	0.315 - 0.787	8 - 20	0.472 - 0.709	12 - 18	1.181	30	0.551	0.118	0.118	0.472	1000
8501260901VR	8501260908VR	8501260900VR	0.315 - 0.787	8 - 20	0.472 - 1.181	12 - 30	1.181	30	1.102	0.118	0.118	0.472	1000
8501440901VR	8501440908VR	8501440900VR	0.315 - 0.787	8 - 20	0.472 - 1.811	12 - 46	1.181	30	1.732	0.118	0.118	0.472	1000
8501150901VR	8501150908VR	8501150900VR	0.197 - 0.630	5 - 10	0.000 - 0.315	0 - 8	0.591	15	0.591	0.079	0.138	0.000	1000
8501220901VR	8501220908VR	8501220900VR	0.197 - 0.630	5 - 10	0.000 - 0.630	0 - 16	0.591	15	0.866	0.079	0.138	.0000	1000

**KY Series
Key Hole Clips**

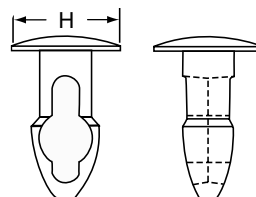


Specifications:

- Material: UL94 V-2 Nylon 6/6
- Color: Natural

Features:

- Key-hole shaped interior allows for easy assembly with finger pressure
- Tapered end slides easily into any hole
- High retention force



Item No.	Ø Hole	Panel Thickness	Ø H	Pack Qty.
27KY1250093	0.125	0.093	0.250	1000
27KY1250125	0.125	0.125	0.250	1000
27KY1250156	0.125	0.156	0.250	1000
27KY1250187	0.125	0.188	0.250	1000
27KY1250219	0.125	0.219	0.250	1000
27KY1250250	0.125	0.250	0.250	1000
27KY1560093	0.156	0.093	0.312	1000
27KY1560125	0.156	0.125	0.312	1000
27KY1560156	0.156	0.156	0.312	1000
27KY1560187	0.156	0.187	0.312	1000
27KY1560218	0.156	0.218	0.312	1000
27KY1560250	0.156	0.250	0.312	1000
27KY1560281	0.156	0.281	0.312	1000
27KY1560312	0.156	0.312	0.312	1000
27KY1560343	0.156	0.343	0.312	1000
27KY1560375	0.156	0.375	0.312	1000
27KY1870093	0.187	0.093	0.312	1000
27KY1870125	0.187	0.125	0.312	1000
27KY1870156	0.187	0.156	0.312	1000
27KY1870187	0.187	0.187	0.312	1000
27KY1870219	0.187	0.219	0.312	1000
27KY1870250	0.187	0.250	0.312	1000
27KY1870281	0.187	0.281	0.312	1000
27KY1870312	0.187	0.312	0.312	1000
27KY1870343	0.187	0.344	0.312	1000

Item No.	Ø Hole	Panel Thickness	Ø H	Pack Qty.
27KY1870375	0.187	0.375	0.312	1000
27KY2190093	0.219	0.093	0.343	1000
27KY2190125	0.219	0.125	0.343	1000
27KY2190156	0.219	0.156	0.343	1000
27KY2190187	0.219	0.187	0.343	1000
27KY2190219	0.219	0.291	0.343	1000
27KY2190250	0.219	0.250	0.343	1000
27KY2190281	0.219	0.281	0.343	1000
27KY2190312	0.219	0.312	0.343	1000
27KY2190343	0.219	0.343	0.344	1000
27KY2190375	0.219	0.375	0.344	1000
27KY2500093	0.250	0.093	0.500	1000
27KY2500125	0.250	0.125	0.500	1000
27KY2500156	0.250	0.156	0.500	1000
27KY2500187	0.250	0.187	0.500	1000
27KY2500219	0.250	0.219	0.500	1000
27KY2500250	0.250	0.250	0.500	1000
27KY2500281	0.250	0.281	0.500	1000
27KY2500312	0.250	0.312	0.500	1000
27KY2500343	0.250	0.343	0.500	1000
27KY2500375	0.250	0.375	0.500	1000
27KY2500406	0.250	0.406	0.500	1000
27KY2500437	0.250	0.437	0.500	1000
27KY2500468	0.250	0.468	0.500	1000
27KY2500500	0.250	0.500	0.500	1000



SCREW COVERS & CAPS

POB and POC Series Decorative Screw Covers



Base



Cap

Specifications:

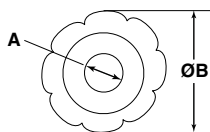
- Material: Base (POB): Polypropylene
- Color: Natural
- Material: Cap (POC): Polypropylene
- Color: See Table

Features:

- An attractive solution to cover screws
- Caps and bases sold separately
- Special colors available – consult factory
- POB bases must be paired with corresponding POC caps for assembly



Base Only

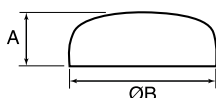


Base

Item No.	Screw Bases For	A	ØB	Covers Screw Size	Pack Qty.
POB100A	#4 Pan	0.120	0.415	0.115	500
POB125A	#6 Pan	0.151	0.415	0.115	500
POB150A	#4/#6 Countersunk	0.151	0.415	0.115	500
POB200A	#8 Pan	0.176	0.500	0.125	500
POB225A	#10 Pan	0.195	0.500	0.125	500
POB250A	#8/#10 Countersunk	0.195	0.500	0.125	500
POB300A	1/4"-20 Pan	0.245	0.620	0.125	500
POB350A	1/4"-20 Countersunk	0.245	0.620	0.13	500



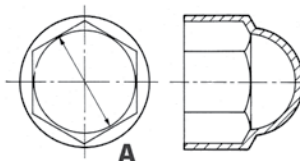
Cap
(Fully Assembled)



Cap

Item No.		A	Ø B	Covers Screw Size	Pack Qty.
Matte White	Matte Black				
POC100MA	POC100MB	0.200	0.500	#4 and #6	500
POC200MA	POC200MB	0.260	0.630	#8 and #10	500
POC300MA	POC300MB	0.260	0.700	1/4"-20	500

BNC Series Bolt and Nut Caps



Specifications:

- Material: Low-Density Polyethylene with UV Stabilizer
- Color: Black and White

Features:

- Protects against weathering and tampering
- Enhances finished appearance

Item No.		Fits Bolt Size	Ø A		Pack Qty.
Black	White		in	mm	
BNC0189A	BNC0189B	#10	0.306	7.77	1000
BNC0250A	BNC0250B	1/4"	0.425	10.80	5000
BNC0312A	BNC0312B	5/16"	0.484	12.29	1000
BNC0375A	BNC0375B	3/8"	0.550	13.97	1000
BNC0437A	BNC0437B	7/16"	0.622	15.80	2500
BNC0500A	BNC0500B	1/2"	0.740	18.80	2000
BNC0625A	BNC0625B	5/8"	0.937	23.80	1000
BNC05A	BNC05B	5mm	0.311	7.90	5000

Item No.		Fits Bolt Size	Ø A		Pack Qty.
Black	White		in	mm	
BNC06A	BNC06B	6mm	0.386	9.80	5000
BNC08A	BNC08B	8mm	0.504	12.80	5000
BNC10A	BNC10B	10mm	0.661	16.79	2500
BNC14A	BNC14B	14mm	0.858	21.79	1200
BNC18A	BNC18B	18mm	1.055	26.80	1500
BNC20A	BNC20B	20mm	1.173	29.79	1200
BNC22A	BNC22B	22mm	1.252	31.80	800
BNC24A	BNC24B	24mm	1.406	35.71	500



HBG Series
Ohio Nut and Bolt Caps



Specifications:

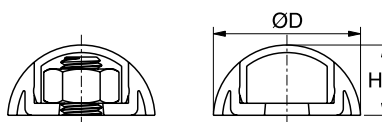
- Material: Elastomeric Polyethylene
- Color: Gray

Features:

- Low-Cost alternative to adjustable swivel glides
- Used in conjunction with Ohio Nut and Bolt parts, capping the head of the bolt with a non-skid, non-marking elastomeric cap

Item No.	Head Ø in	Head Thickness in	Pack Qty.
HBG1010A	0.750	0.093	5000
HBG1020A	0.875	0.125	3800
HBG1030A	1.062	0.156	2200

SCC Series
Secure Cover Caps



Specifications:

- Material: Polypropylene
- Color: See Table

Features:

- To cover bolt head or nut depending on application
- Cap design snaps securely into base
- Able to mix or match colors for the cap and the base
- Ideal for outdoor furniture or playground equipment

Item No.						Fits Bolt and Nut		Ø D in	H in	Pack Qty.
White		Black		Red		Std	Metric			
Cap	Base	Cap	Base	Cap	Base	—	M6	0.984	0.472	250
SCC003W	SCB003W	SCC003B	SCB003B	SCC003R	SCB003R	5/16	M8	1.260	0.551	250
SCC005W	SCB005W	SCC005B	SCB005B	SCC005R	SCB005R	3/8	M10	1.496	0.669	100
SCC010W	SCB010W	SCC010B	SCB010B	SCC010R	SCB010R	7/16	M12	1.693	0.807	100

Item No.						Fits Bolt and Nut		Ø D in	H in	Pack Qty.
Blue		Green		Yellow		Std	Metric			
Cap	Base	Cap	Base	Cap	Base	—	M6	0.984	0.472	250
SCC003BL	SCB003BL	SCC003G	SCB003G	SCC003Y	SCB003Y	5/16	M8	1.260	0.551	250
SCC005BL	SCB005BL	SCC005G	SCB005G	SCC005Y	SCB005Y	3/8	M10	1.496	0.669	100
SCC010BL	SCB010BL	SCC010G	SCB010G	SCC010Y	SCB010Y	7/16	M12	1.693	0.807	100

3"
to
59"

CABLE TIES

**Millions
In Stock
Ready for
Same Day
Shipping**

800 847 0486 | www.essentracomponents.com



DECORATIVE SCREW CAPS AND SCREWS

USC Series Screw Caps

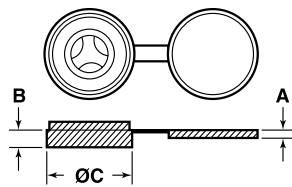


Fig. 1

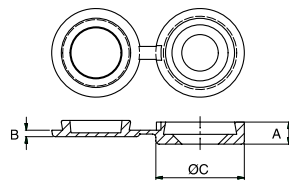


Fig. 2



Specifications:

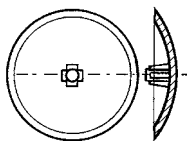
- Material: Polypropylene
- Color: See Table

Features:

- The USC series fits a range of screw sizes, reducing the need to inventory a wide variety of caps
- Each cap will take a No. 6, 8 or 10 flat head, and an oval head or No. 6 round head screw

Item No.	Color	Fig	Fits Screw	A		B		Ø C		Pack Qty.
				in	mm	in	mm	in	mm	
USC0406A	White	1	#4 to 6	0.060	1.52	0.130	3.30	0.462	11.73	1000
USC0406B	Black	1	#4 to 6	0.060	1.52	0.130	3.30	0.462	11.73	1000
USC6810A	White	2	6 to 12 and M3.5/M6	0.039	1.0	0.134	3.4	0.535	13.6	5000
USC6810C	Black	2	6 to 12 and M3.5/M6	0.039	1.0	0.134	3.4	0.535	13.6	5000
USC464219A	White	1	1/4	0.114	2.90	0.197	5.00	0.689	17.50	5000
USC464220A	Black	1	1/4	0.114	2.90	0.197	5.00	0.689	17.50	5000
USC3800A	White	1	3/8	0.114	2.90	0.326	8.28	0.950	24.13	1000
USC3800B	Black	1	3/8	0.114	2.90	0.326	8.28	0.950	24.13	1000

CH Series Cross Head Screw Caps



Specifications:

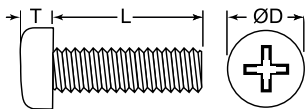
- Material: Low-Density Polyethylene
- Color: White

Features:

- Provides excellent concealment and protection of cross-head screws

Item No.	Total Ø		Fits Drive Size	Pack Qty.
	in	mm		
CH2A	0.570	14.5	#2	20000
CH3A	0.575	14.6	#3	20000
CH4A	0.705	17.9	#4	10000

NSP Series Pan Phillips Head Screws



Specifications:

- Material: UL94 V-2 Nylon 6/6
- Color: Natural

Features:

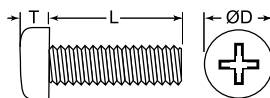
- Threaded nylon bolts and screws are the ideal fastener for mechanically securing materials
- Ideal for outdoor environments
- Lightweight compared to metal screws and bolts
- Resistant to corrosion, oil, abrasion and most chemicals

Item No.	Thread	L		T		ØD		Pack Qty.
		in	mm	in	mm	in	mm	
NSP-4-2-01	#4-40	0.125	3.175	0.080	2.032	0.210	5.334	1000
NSP-4-3-01	#4-40	0.188	4.775	0.080	2.032	0.210	5.334	1000
NSP-4-4-01	#4-40	0.250	6.350	0.080	2.032	0.210	5.334	1000
NSP-4-5-01	#4-40	0.313	7.950	0.080	2.032	0.210	5.334	1000
NSP-4-6-01	#4-40	0.375	9.525	0.080	2.032	0.210	5.334	1000
NSP-4-7-01	#4-40	0.438	11.125	0.080	2.032	0.210	5.334	1000
NSP-4-8-01	#4-40	0.500	12.700	0.080	2.032	0.210	5.334	1000
NSP-4-10-01	#4-40	0.625	15.875	0.080	2.032	0.210	5.334	1000
NSP-4-12-01	#4-40	0.750	19.050	0.080	2.032	0.210	5.334	1000
NSP-4-14-01	#4-40	0.875	22.225	0.080	2.032	0.210	5.334	1000
NSP-4-16-01	#4-40	1.000	25.400	0.080	2.032	0.210	5.334	1000
NSP-6-2-01	#6-32	0.125	3.175	0.090	2.286	0.260	6.604	1000
NSP-6-3-01	#6-32	0.188	4.775	0.090	2.286	0.260	6.604	1000
NSP-6-4-01	#6-32	0.250	6.350	0.090	2.286	0.260	6.604	1000
NSP-6-5-01	#6-32	0.313	7.950	0.090	2.286	0.260	6.604	1000
NSP-6-6-01	#6-32	0.375	9.525	0.090	2.286	0.260	6.604	1000

Item No.	Thread	L		T		ØD		Pack Qty.
		in	mm	in	mm	in	mm	
NSP-6-5-01	#6-32	0.313	7.950	0.090	2.286	0.260	6.604	1000
NSP-6-6-01	#6-32	0.375	9.525	0.090	2.286	0.260	6.604	1000
NSP-6-7-01	#6-32	0.438	11.125	0.090	2.286	0.260	6.604	1000
NSP-6-8-01	#6-32	0.500	12.700	0.090	2.286	0.260	6.604	1000
NSP-6-10-01	#6-32	0.625	15.875	0.090	2.286	0.260	6.604	1000
NSP-6-12-01	#6-32	0.750	19.050	0.090	2.286	0.260	6.604	1000
NSP-6-14-01	#6-32	0.875	22.225	0.090	2.286	0.260	6.604	1000
NSP-6-16-01	#6-32	1.000	25.400	0.090	2.286	0.260	6.604	1000
NSP-8-4-01	#8-32	0.250	6.350	0.110	2.794	0.320	8.128	1000
NSP-8-6-01	#8-32	0.375	9.525	0.110	2.794	0.320	8.128	1000
NSP-8-8-01	#8-32	0.500	12.700	0.110	2.794	0.320	8.128	1000
NSP-8-10-01	#8-32	0.625	15.875	0.110	2.794	0.320	8.128	1000
NSP-8-12-01	#8-32	0.750	19.050	0.110	2.794	0.320	8.128	1000
NSP-8-14-01	#8-32	0.875	22.225	0.110	2.794	0.320	8.128	1000
NSP-8-16-01	#8-32	1.000	25.400	0.110	2.794	0.320	8.128	1000



M Series
Metric Pan Phillips Head Screws

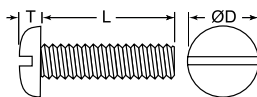


- Specifications:
- Material: Nylon 6/6
 - Color: Natural

Item No.	Thread	L		T		ØD		Pack Qty.
		in	mm	in	mm	in	mm	
50M030050P006	M3	0.236	6.000	0.091	2.300	0.213	5.400	1000
50M030050P008	M3	0.315	8.000	0.098	2.500	0.224	5.700	1000
50M030050P010	M3	0.394	10.000	0.091	2.300	0.213	5.400	1000
50M030050P016	M3	0.630	16.000	0.091	2.300	0.213	5.400	1000
50M030050P025	M3	0.984	25.000	0.091	2.300	0.213	5.400	1000
50M040070P006	M4	0.236	6.000	0.114	2.900	0.315	8.000	1000
50M040070P008	M4	0.315	8.000	0.110	2.800	0.291	7.400	1000
50M040070P010	M4	0.394	10.000	0.114	2.900	0.315	8.000	1000
50M040070P016	M4	0.630	16.000	0.114	2.900	0.315	8.000	1000
50M040070P025	M4	0.984	25.000	0.114	2.900	0.315	8.000	1000
50M050080P06	M5	0.236	6.000	0.138	3.500	0.366	9.300	1000
50M050080P10	M5	0.394	10.000	0.138	3.500	0.366	9.300	1000

Item No.	Thread	L		T		ØD		Pack Qty.
		in	mm	in	mm	in	mm	
50M050080P16	M5	0.630	16.000	0.138	3.500	0.366	9.300	1000
50M050080P25	M5	0.984	25.000	0.138	3.500	0.366	9.300	1000
50M060100P010	M6	0.394	10.000	0.177	4.500	0.453	11.500	1000
50M060100P016	M6	0.630	16.000	0.177	4.500	0.453	11.500	1000
50M060100P025	M6	0.984	25.000	0.177	4.500	0.453	11.500	1000
50M080125P010	M8	0.394	10.000	0.226	5.750	0.630	16.000	1000
50M080125P016	M8	0.630	16.000	0.226	5.750	0.630	16.000	1000
50M080125P025	M8	0.984	25.000	0.226	5.750	0.630	16.000	1000
50M100150N016	M10	0.630	16.000	0.285	7.250	0.787	20.000	500
50M100150P020	M10	0.787	20.000	0.285	7.250	0.787	20.000	500
50M100150P030	M10	1.181	30.000	0.285	7.250	0.787	20.000	500

P Series
Pan Slotted Head Screws



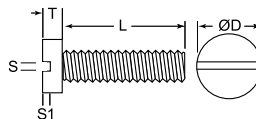
- Specifications:
- Material: Nylon 6/6
 - Color: Natural

Item No.	Thread	L		T		ØD		Pack Qty.
		in	mm	in	mm	in	mm	
010440P018	#4-40	0.188	4.775	0.080	2.032	0.210	5.334	1000
010440P025	#4-40	0.250	6.350	0.080	2.032	0.210	5.334	1000
010440P037	#4-40	0.375	9.525	0.080	2.032	0.210	5.334	1000
010440P043	#4-40	0.438	11.125	0.080	2.032	0.210	5.334	1000
010440P050	#4-40	0.500	12.700	0.080	2.032	0.210	5.334	1000
010440P062	#4-40	0.625	15.875	0.080	2.032	0.210	5.334	1000
010440P075	#4-40	0.750	19.050	0.080	2.032	0.210	5.334	1000
010440P100	#4-40	1.000	25.400	0.080	2.032	0.210	5.334	1000
010632P012	#6-32	0.125	3.175	0.090	2.286	0.260	6.604	1000
010632P018	#6-32	0.188	4.775	0.090	2.286	0.260	6.604	1000
010632P025	#6-32	0.250	6.350	0.090	2.286	0.260	6.604	1000
010632P031	#6-32	0.313	7.950	0.090	2.286	0.260	6.604	1000
010632P037	#6-32	0.375	9.525	0.090	2.286	0.260	6.604	1000
010632P050	#6-32	0.500	12.700	0.090	2.286	0.260	6.604	1000
010632P062	#6-32	0.625	15.875	0.090	2.286	0.260	6.604	1000
010632P075	#6-32	0.750	19.050	0.090	2.286	0.260	6.604	1000
010632P087	#6-32	0.875	22.225	0.090	2.286	0.260	6.604	1000
010632P100	#6-32	1.000	25.400	0.090	2.286	0.260	6.604	1000

Item No.	Thread	L		T		ØD		Pack Qty.
		in	mm	in	mm	in	mm	
010832P025	#8-32	0.250	6.350	0.110	2.794	0.320	8.128	1000
010832P037	#8-32	0.375	9.525	0.110	2.794	0.320	8.128	1000
010832P043	#8-32	0.438	11.125	0.110	2.794	0.320	8.128	1000
010832P050	#8-32	0.500	12.700	0.110	2.794	0.320	8.128	1000
010832P062	#8-32	0.625	15.875	0.110	2.794	0.320	8.128	1000
010832P075	#8-32	0.750	19.050	0.110	2.794	0.320	8.128	1000
010832P087	#8-32	0.875	22.225	0.110	2.794	0.320	8.128	1000
010832P100	#8-32	1.000	25.400	0.110	2.794	0.320	8.128	1000
010832P200	#8-32	2.000	50.800	0.120	3.048	0.314	7.976	1000
011032P050	#10-32	0.500	12.700	0.127	3.226	0.365	9.271	1000
011032P100	#10-32	1.000	25.400	0.127	3.226	0.365	9.271	1000
011032P200	#10-32	2.000	50.800	0.171	4.343	0.483	12.268	1000
P-S1420X1/4	1/4-20	0.250	6.350	0.171	4.343	0.483	12.268	1000
012520P050	1/4-20	0.500	12.700	0.171	4.343	0.483	12.268	1000
P-S1420X3/4	1/4-20	0.750	19.050	0.171	4.343	0.483	12.268	1000
012520P100	1/4-20	1.000	25.400	0.171	4.343	0.483	12.268	1000
P-S1420X1/2	1/4-20	1.500	38.100	0.171	4.343	0.483	12.268	1000
012520P175	1/4-20	1.750	44.450	0.171	4.343	0.483	12.268	1000
012520P200	1/4-20	2.000	50.800	0.171	4.343	0.483	12.268	1000

M Series
Metric Cheese Slotted Head Bolts

Thread	D (mm)	T (mm)	S (mm)	S1 (mm)
M2	3.8	1.3	0.7	0.9
M2.5	4.5	1.6	0.8	1.0
M3	5.5	2.0	1.0	1.3
M3.5	6.0	2.4	1.1	1.4
M4	7.0	2.6	1.2	1.6
M5	8.5	3.3	1.5	2.0
M6	10.0	3.9	1.9	2.3
M8	13.0	5.0	2.3	2.8
M10	15.63	6.0	2.8	3.2



- Specifications:
- Material: Nylon 6/6
 - Color: Natural

Item No.	Thread	L mm	Pack Qty.
50M020040D006	M2 x 0.4	6	1000
50M025045D006	M2.5 x 0.45	6	1000
50M025045D016	M2.5 x 0.45	16	1000
50M030050D006	M3 x 0.5	6	1000
50M030050D008	M3 x 0.5	8	1000
50M030050D010	M3 x 0.5	10	1000
50M030050D012	M3 x 0.5	12	1000
50M030050D016	M3 x 0.5	16	1000
50M030050D020	M3 x 0.5	20	1000
50M035060D010	M3.5 x 0.6	10	1000
50M040070D006	M4 x 0.7	6	1000
50M040070D008	M4 x 0.7	8	1000
50M040070D010	M4 x 0.7	10	1000
50M040070D012	M4 x 0.7	12	1000

Item No.	Thread	L mm	Pack Qty.
50M040070D016	M4 x 0.7	16	1000
50M040070D020	M4 x 0.7	20	1000
50M040070D030	M4 x 0.7	30	1000
50M050080D010	M5 x 0.8	10	1000
50M050080D016	M5 x 0.8	16	1000
50M050080D025	M5 x 0.8	25	1000
50M060100D012	M6 x 1.0	12	1000
50M060100D016	M6 x 1.0	16	1000
50M060100D030	M6 x 1.0	30	1000
50M080125D010	M8 x 1.25	10	1000
50M080125D025	M8 x 1.25	25	1000
50M100150D025	M10 x 1.5	25	1000
50M100150D030	M10 x 1.5	30	1000



SOCKET HEAD SCREWS, WASHERS, NUTS

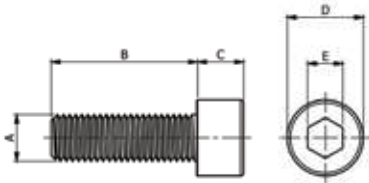
183 Series
PEEK® Socket Head Screw

Specifications:

- Material: UL94 V-0 PEEK®
- Color: Light Brown

Features:

- Heat Resistant up to 350°F
- Excellent mechanical and chemical resistance properties
- High abrasion resistance
- Resistant to water



Item No.	A Thread	B mm	C mm	Ø D mm	E mm	Pack Qty.
183 030 870 409	M3	8.0	3.0	5.5	2.5	25
183 031 070 409	M3	10.0	3.0	5.5	2.5	25
183 031 270 409	M3	12.0	3.0	5.5	2.5	25
183 031 570 409	M3	15.0	3.0	5.5	2.5	25
183 032 070 409	M3	20.0	3.0	5.5	2.5	10
183 032 570 409	M3	25.0	3.0	5.5	2.5	10
183 040 870 409	M4	8.0	4.0	7.0	3.0	10
183 041 070 409	M4	10.0	4.0	7.0	3.0	10
183 041 270 409	M4	12.0	4.0	7.0	3.0	10
183 041 570 409	M4	15.0	4.0	7.0	3.0	10
183 042 070 409	M4	20.0	4.0	7.0	3.0	10
183 042 570 409	M4	25.0	4.0	7.0	3.0	10
183 043 070 409	M4	30.0	4.0	7.0	3.0	10
183 050 870 409	M5	8.0	5.0	8.5	4.0	10
183 051 070 409	M5	10.0	5.0	8.5	4.0	10
183 051 270 409	M5	12.0	5.0	8.5	4.0	10
183 051 570 409	M5	15.0	5.0	8.5	4.0	10
183 052 070 409	M5	20.0	5.0	8.5	4.0	10
183 052 570 409	M5	25.0	5.0	8.5	4.0	10
183 053 070 409	M5	30.0	5.0	8.5	4.0	10
183 061 070 409	M6	10.0	6.0	10.0	5.0	10
183 061 270 409	M6	12.0	6.0	10.0	5.0	10
183 061 570 409	M6	15.0	6.0	10.0	5.0	10
183 062 070 409	M6	20.0	6.0	10.0	5.0	10
183 062 570 409	M6	25.0	6.0	10.0	5.0	10
183 063 070 409	M6	30.0	6.0	10.0	5.0	10
183 063 570 409	M6	35.0	6.0	10.0	5.0	10
183 081 070 409	M8	10.0	8.0	13.0	6.0	1
183 081 270 409	M8	12.0	8.0	13.0	6.0	1
183 081 570 409	M8	15.0	8.0	13.0	6.0	1
183 082 070 409	M8	20.0	8.0	13.0	6.0	1
183 082 570 409	M8	25.0	8.0	13.0	6.0	1
183 083 070 409	M8	30.0	8.0	13.0	6.0	1
183 083 570 409	M8	35.0	8.0	13.0	6.0	1

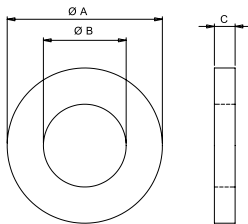
185 Series
PEEK® Flat Washers

Specifications:

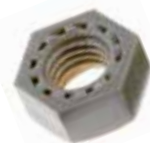
- Material: UL94 V-0 PEEK®
- Color: Light Brown

Features:

- Heat Resistant up to 350°F

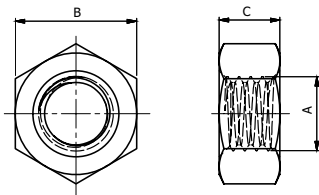


Item No.	Ø B		Ø A		C		Fits Screw		Pack Qty.
	in	mm	in	mm	in	mm	Standard	Metric	
185020070409	0.106	2.7	0.236	6.0	0.020	0.5	#3	M2.5	250
185030070409	0.126	3.2	0.276	7.0	0.020	0.5	#5	M3	250
185040070409	0.169	4.3	0.354	9.0	0.031	0.8	#8	M4	250
185050070409	0.209	5.3	0.394	10.0	0.039	1.0	#10	M5	250
185060070409	0.252	6.4	0.492	12.5	0.063	1.6	1/4	M6	250
185080070409	0.331	8.4	0.669	17.5	0.063	1.6	5/16	M8	100
185100070409	0.413	10.5	0.827	21.0	0.079	2.0	3/8	M10	100

184 Series
PEEK® Hex Nuts

Specifications:

- Material: UL94 V-0 PEEK®
- Color: Light Brown



Item No.	A		B mm	C mm	Pack Qty.
	Thread	Pitch			
184020070409	M2.6	0.45	5.0	2.0	25
184030070409	M3	0.50	5.5	2.4	25
184040070409	M4	0.70	7.0	3.2	25
184050070409	M5	0.80	8.0	4.0	25
184060070409	M6	1.00	10.0	5.0	25
184080070409	M8	1.25	13.0	6.5	25
184100070409	M10	1.50	17.0	8.0	25

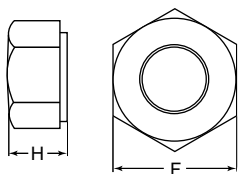


**HN Series
Standard Hex Nuts**



- Specifications:
- Material: Nylon 6/6
 - Color: Natural

- Features:
- Ideal for outdoor environments
 - Lightweight compared to metal nuts
 - Resistant to corrosion, oil, abrasion and most chemicals



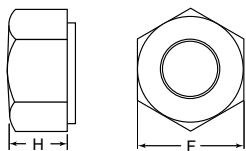
Item No.	Thread	F		H		Pack Qty.
		in	mm	in	mm	
0400256HN	#2-56	0.180	4.572	0.070	1.778	1000
0400440HN	#4-40	0.245	6.223	0.093	2.362	1000
0400632HN	#6-32	0.305	7.747	0.110	2.794	1000
0400832HN	#8-32	0.338	8.585	0.125	3.175	1000
0401024HN	#10-24	0.375	9.525	0.146	3.708	1000
0401032HN	#10-32	0.375	9.525	0.146	3.708	1000
0425020HN	1/4-20	0.425	10.78	0.235	5.97	1000
0425028HN	1/4-28	0.438	11.125	0.207	5.258	1000
0431218HN	5/16-18	0.500	12.700	0.270	6.858	1000
0431224HN	5/16-24	0.500	12.700	0.302	7.671	1000
0437516HN	3/8-16	0.563	14.300	0.330	8.382	1000
0443714HN	7/16-14	0.750	19.050	0.380	9.652	500
0450013HN	1/2-13	0.750	19.050	0.443	11.252	500
0462511HN	5/8-11	1.000	25.400	0.546	13.868	500
0475010HN	3/4-10	1.125	28.575	0.635	16.129	500

**HN Series
Standard Metric Hex Nuts**



- Specifications:
- Material: Nylon 6/6
 - Color: Natural

- Features:
- Ideal for outdoor environments
 - Lightweight compared to metal nuts
 - Resistant to corrosion, oil, abrasion and most chemicals

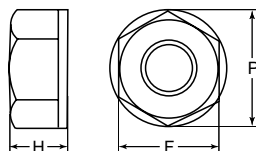


Item No.	Thread	F		H		Pack Qty.
		in	mm	in	mm	
04M020040HN	M2	0.154	3.900	0.047	1.200	1000
04M025045HN	M2.5	0.193	4.900	0.071	1.800	1000
04M030050HN	M3	0.213	5.400	0.087	2.200	1000
04M035060HN	M3.5	0.272	6.900	0.106	2.700	1000
04M040070HN	M4	0.272	6.900	0.118	3.000	1000
04M050080HN	M5	0.311	7.900	0.169	4.300	1000
04M060100HN	M6	0.394	10.000	0.213	5.400	1000
04M080125HN	M8	0.508	12.900	0.252	6.400	1000
04M100150HN	M10	0.583	14.800	0.386	9.800	1000
04M120175HN	M12	0.698	17.740	0.415	10.540	1000

**LN Series
Locking Hex Nuts**



- Specifications:
- Material: Nylon 6/6
 - Color: Natural



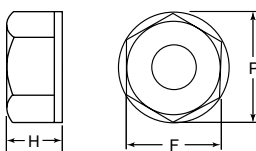
Item No.	Thread	F	P	H	Pack Qty.
		in	in	in	
0701024LN	8-32	0.335	0.380	0.125	1000
070832LN	10-24	0.365	0.420	0.125	1000

**SLN Series
Self-Threading Lock Nuts**



- Specifications:
- Material: Nylon 6/6
 - Color: Natural

- Features:
- Designed for use with steel bolts
 - Self-threading to ensure a snug fit
 - Ideal for applications seeing vibration or movement
 - Resistant to corrosion, oil, abrasion and most chemicals



Item No.	For Use With Screw size	F	P	H	Pack Qty.
		In	In	In	
0700256SLN	2-56	0.180	0.205	0.140	1000
0700440SLN	4-40	0.250	0.285	0.200	1000
0700632SLN	6-32	0.305	0.350	0.200	1000
0700832SLN	8-32	0.335	0.385	0.230	1000
0701024SLN	10-24	0.365	0.425	0.250	1000
0701032SLN	10-32	0.365	0.425	0.250	1000
0725020SLN	1/4-20	0.425	0.510	0.275	1000



THUMB SCREW KNOBS

Round Screw

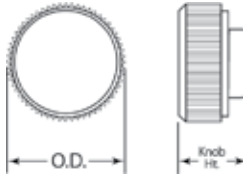


Specifications:

- Material: Acetal
- Color: See Table

Features:

- Can be used as a thumb screw or a knob
- Caps available for use with any length screw

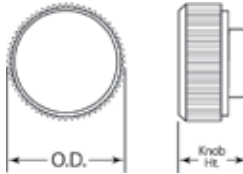


Screw size	OD (in)	Knob Height (in)
#4	0.312	0.172
#6	0.375	0.203
#8	0.250	0.219
#10	0.656	0.250
1/4	1.000	0.328
5/16	1.000	0.391

Item No.	For Screw	Color	Pack Qty.
29R004B	4	Black	100
29R006B	6	Black	100
29R008B	8	Black	100
29R010B	10	Black	100
29R141B	1/4	Black	100
29R516B	5/16	Black	100
29R004BL	4	Blue	100
29R006BL	6	Blue	100
29R008BL	8	Blue	100

Item No.	For Screw	Color	Pack Qty.
29R010BL	10	Blue	100
29R141BL	1/4	Blue	100
29R516BL	5/16	Blue	100
29R004RD	4	Red	100
29R006RD	6	Red	100
29R008RD	8	Red	100
29R010RD	10	Red	100
29R141RD	1/4	Red	100
29R516RD	5/16	Red	100

Round Screw Metric

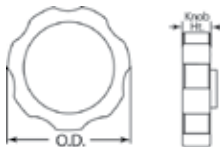


Screw size	OD (mm)	Knob Height (mm)
M4	12.700	5.560
M5	16.600	6.350
M6	25.400	8.330

Item No.	For Screw	Color	Pack Qty.
29M400RB	M4	Black	100
29M500RB	M5	Black	100
29M600RB	M6	Black	100
29M400RBL	M4	Blue	100
29M500RBL	M5	Blue	100

Item No.	For Screw	Color	Pack Qty.
29M600RBL	M6	Blue	100
29M400RRD	M4	Red	100
29M500RRD	M5	Red	100
29M600RRD	M6	Red	100

Flowerette Screw

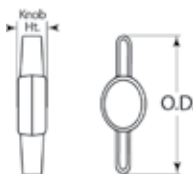


Screw size	OD (in)	Knob Height (in)
1/4	1.500	0.375
5/16	1.500	0.375
3/8	1.500	0.375

Item No.	For Screw	Color	Pack Qty.
29F014B	1/4	Black	100
29F516B	5/16	Black	100
29F038B	3/8	Black	100
29F014BL	1/4	Blue	100
29F516BL	5/16	Blue	100

Item No.	For Screw	Color	Pack Qty.
29F038BL	3/8	Blue	100
29F014RD	1/4	Red	100
29F516RD	5/16	Red	100
29F038RD	3/8	Red	100

Wing Screw



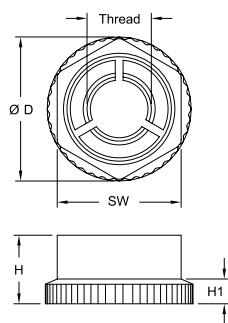
Screw size	OD (in)	Knob Height (in)
#10	1.000	0.250
1/4	1.266	0.344
5/16	1.500	0.406
3/8	1.781	0.484

Item No.	For Screw	Color	Pack Qty.
29W010B	10	Black	100
29W014B	1/4	Black	100
29W516B	5/16	Black	100
29W038B	3/8	Black	100
29W010BL	10	Blue	100
29W014BL	1/4	Blue	100

Item No.	For Screw	Color	Pack Qty.
29W516BL	5/16	Blue	100
29W038BL	3/8	Blue	100
29W010RD	10	Red	100
29W014RD	1/4	Red	100
29W516RD	5/16	Red	100
29W038RD	3/8	Red	100



KNF Series Metric Quick Nut



Specifications:

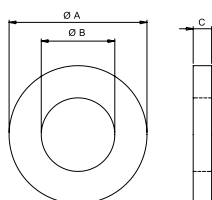
- Material: UL94 V-2 Nylon 6/6
- Color: Black

Features:

- To install, push down the length of the threaded fastener to desired location and lock with a 180° turn
- Reduces assembly time
- Corrosion resistant
- Lightweight
- To remove, unscrew with a wrench

Item No.	Thread	SW mm	ØD mm	H mm	H1 mm	Pack Qty.
KNF-40	M4	8	9.4	4.7	1.8	1000

173 Series Polycarbonate Flat Washer



Specifications:

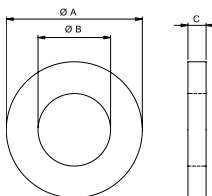
- Material: Polycarbonate
- Color: Clear

Features:

- High transparency

Item No.	Ø B		Ø A		C		Fits Screw		Pack Qty.
	in	mm	in	mm	in	mm	Standard	Metric	
173000200022	0.083	2.1	0.157	4.0	0.020	0.5	#2	M2	100
173002600022	0.106	2.7	0.236	6.0	0.020	0.5	#3	M2.5	100
173000300022	0.160	3.3	0.315	8.0	0.031	0.8	#5	M3	100
173000400022	0.177	4.5	0.394	10.0	0.031	0.8	#8	M4	100
173000500022	0.217	5.5	0.472	12.0	0.039	1.0	#12	M5	100
173000600022	0.256	6.5	0.512	13.0	0.063	1.6	1/4	M6	100
173000800022	0.335	8.5	0.709	18.0	0.063	1.6	1/4	M8	100

PVC Flat Washer



Specifications:

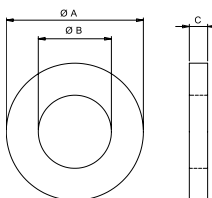
- Material: PVC
- Color: Black

Features:

- No water absorption

Item No.	Ø B		Ø A		C		Fits Screw		Pack Qty.
	in	mm	in	mm	in	mm	Standard	Metric	
032030011407	0.126	3.2	0.354	9.0	0.059	1.5	#5	M3	1000
032040011407	0.169	4.3	0.472	12.0	0.055	1.4	#8	M4	1000
032050011407	0.209	5.3	0.591	15.0	0.059	1.5	#10	M5	500
032060011407	0.252	6.4	0.709	18.2	0.079	2.0	1/4	M6	500
032080011407	0.331	8.4	0.984	25.0	0.098	2.5	5/16	M8	500
032100011407	0.413	10.5	1.181	30.0	0.118	3.0	3/8	M10	250
032120011407	0.512	13.0	1.575	40.0	0.118	3.0	1/2	M13	100
033030011407	0.126	3.2	0.591	15.0	0.059	1.5	#5	M3	500
033040011407	0.169	4.3	0.709	18.0	0.079	2.0	#8	M4	500
033050011407	0.209	5.3	0.984	25.0	0.098	2.5	#10	M5	500
033060011407	0.252	6.4	1.181	30.0	0.118	3.0	1/4	M6	100
033080011407	0.331	8.4	1.575	40.0	0.118	3.0	5/16	M8	100

585 Series Polypropylene Flat Washer



Specifications:

- Material: Polypropylene
- Color: Natural

Features:

- Chemical Resistance

Item No.	Ø B ID		Ø A OD		C		Fits Screw		Pack Qty.
	in	mm	in	mm	in	mm	Standard	Metric	
585010000011	0.169	4.3	0.354	9.0	0.031	0.8	#8	M4	100
585020000011	0.209	5.3	0.394	10.0	0.039	1.0	#10	M5	100
585030000011	0.252	6.4	0.472	12.0	0.063	1.6	1/4	M6	100
585040000011	0.331	8.4	0.630	16.0	0.063	1.6	5/16	M8	100
585060000011	0.413	10.5	0.787	20.0	0.079	2.0	3/8	M10	100
585050000011	0.512	13.0	0.945	24.0	0.098	2.5	1/2	M12	100



PLASTIC FLAT WASHERS

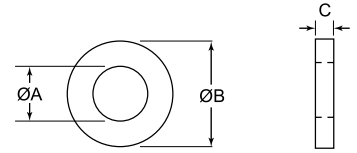
FW Series
Flat Washers

Specifications:

- Material: Nylon
- Color: See Table

Features:

- Resistant to corrosion and many chemicals



Item No.		ØA	ØB	C	Fits	Pack Qty.
Natural	Black	mm	mm	mm		
17W01011	17W01011B	0.032	0.125	0.060	—	1000
16FW002032	16FW002032B	0.090	0.250	0.032	#2	1000
16FW002062	16FW002062B	0.090	0.250	0.062	#2	1000
16FW002093	16FW002093B	0.090	0.250	0.093	#2	1000
16FW002125	16FW002125B	0.090	0.250	0.125	#2	1000
17W01815	17W01815B	0.094	0.188	0.020	—	1000
17W02190	17W02190B	0.104	0.220	0.031	—	1000
16FW004032	16FW004032B	0.115	0.250	0.032	#4	1000
16FW004062	16FW004062B	0.115	0.250	0.062	#4	1000
16FW004093	16FW004093B	0.115	0.250	0.093	#4	1000
16FW004125	16FW004125B	0.115	0.250	0.125	#4	1000
17W02181	17W02181B	0.120	0.218	0.037	—	1000
17W02811	17W02811B	0.120	0.288	0.040	—	1000
17W02350	17W02350B	0.125	0.235	0.040	—	1000
17W03758	17W03758B	0.125	0.375	0.040	—	1000
17W03123	17W03123B	0.130	0.318	0.062	—	1000
17W03505	17W03505B	0.130	0.355	0.062	—	1000
16FW006032	16FW006032B	0.140	0.312	0.032	#6	1000
16FW006062	16FW006062B	0.140	0.312	0.062	#6	1000
16FW006093	16FW006093B	0.140	0.312	0.093	#6	1000
16FW006125	16FW006125B	0.140	0.312	0.125	#6	1000
17W02504	17W02504B	0.141	0.250	0.062	—	1000
17W03757	17W03757B	0.141	0.375	0.031	—	1000
17W03128	17W03128B	0.156	0.320	0.031	—	1000
16FW008032	16FW008032B	0.171	0.375	0.032	#8	1000
16FW008062	16FW008062B	0.171	0.375	0.062	#8	1000
16FW008093	16FW008093B	0.171	0.375	0.093	#8	1000
16FW008125	16FW008125B	0.171	0.375	0.125	#8	1000
17W03121	17W03121B	0.187	0.312	0.050	—	1000
17W05008	17W05008B	0.188	0.505	0.032	—	1000
17W03764	17W03764B	0.189	0.375	0.031	—	1000
16FW010032	16FW010032B	0.194	0.375	0.032	#10	1000
16FW010062	16FW010062B	0.194	0.375	0.062	#10	1000
16FW010093	16FW010093B	0.194	0.375	0.093	#10	1000
16FW010125	16FW010125B	0.194	0.375	0.125	#10	1000
17W06252	17W06252B	0.194	0.625	0.125	—	1000
17W04376	17W04376B	0.195	0.437	0.020	—	1000
17W04373	17W04373B	0.195	0.437	0.031	—	1000
17W04371	17W04371B	0.200	0.437	0.062	—	1000
17W05016	17W05016B	0.219	0.500	0.156	—	1000
17W03768	17W03768B	0.250	0.375	0.150	—	1000
17W06255	17W06255B	0.250	0.625	0.062	—	1000
17W06221	17W06221B	0.252	0.622	0.060	—	1000
16FW250032	16FW250032B	0.257	0.500	0.032	1/4	1000
16FW250062	16FW250062B	0.257	0.500	0.062	1/4	1000

Item No.		ØA	ØB	C	Fits	Pack Qty.
Natural	Black	mm	mm	mm		
16FW250093	16FW250093B	0.257	0.500	0.093	1/4	1000
16FW250125	16FW250125B	0.257	0.500	0.125	1/4	1000
17W06262	17W06262B	0.257	0.625	0.020	—	1000
17W07530	17W07530B	0.257	0.750	0.062	—	1000
17W08762	17W08762B	0.257	0.875	0.062	—	1000
17W05622	17W05622B	0.260	0.562	0.062	—	1000
17W06866	17W06866B	0.260	0.687	0.125	—	1000
17W05003	17W05003B	0.281	0.490	0.030	—	1000
17W07192	17W07192B	0.281	0.719	0.062	—	1000
17W06264	17W06264B	0.315	0.625	0.031	—	1000
17W08801	17W08801B	0.315	0.872	0.062	—	1000
16FW312032	16FW312032B	0.317	0.500	0.032	5/16	1000
16FW312062	16FW312062B	0.317	0.500	0.062	5/16	1000
16FW312093	16FW312093B	0.317	0.500	0.093	5/16	1000
16FW312125	16FW312125B	0.317	0.500	0.125	5/16	1000
17W07513	17W07513B	0.317	0.750	0.062	—	1000
17W06266	17W06266B	0.321	0.625	0.125	—	1000
17W07503	17W07503B	0.323	0.750	0.125	—	1000
17W07401	17W07401B	0.340	0.740	0.062	—	1000
17W08754	17W08754B	0.343	0.885	0.062	—	1000
17W04721	17W04721B	0.375	0.505	0.050	—	1000
16FW375032	16FW375032B	0.375	0.625	0.032	3/8	1000
17W07402	17W07402B	0.375	0.750	0.062	—	1000
17W08759	17W08759B	0.377	0.875	0.062	—	1000
17W06881	17W06881B	0.390	0.688	0.031	—	1000
16FW375062	16FW375062B	0.380	0.625	0.062	3/8	1000
16FW375093	16FW375093B	0.380	0.625	0.093	3/8	1000
16FW375125	16FW375125B	0.380	0.625	0.125	3/8	1000
17W07506	17W07506B	0.390	0.750	0.062	—	1000
17W07517	17W07517B	0.406	0.750	0.032	—	1000
17W07525	17W07525B	0.406	0.750	0.200	—	1000
17W10002	17W10002B	0.406	1.000	0.062	—	500
16FW437032	16FW437032B	0.443	0.750	0.032	7/16	1000
16FW437062	16FW437062B	0.443	0.750	0.062	7/16	1000
16FW437093	16FW437093B	0.443	0.750	0.093	7/16	1000
16FW437125	16FW437125B	0.443	0.750	0.125	7/16	1000
17W15002	17W15002B	0.500	1.500	0.125	—	500
16FW500032	16FW500032B	0.505	0.750	0.032	1/2	1000
16FW500062	16FW500062B	0.505	0.750	0.062	1/2	1000
16FW500093	16FW500093B	0.505	0.750	0.093	1/2	1000
16FW500125	16FW500125B	0.505	0.750	0.125	1/2	1000
17W12504	17W12504B	0.516	1.250	0.062	—	500
17W07120	17W07120B	0.522	0.712	0.062	—	1000
17W11251	17W11251B	0.540	1.120	0.125	—	500
17W12503	17W12503B	0.765	1.250	0.080	—	500

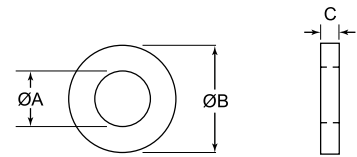
MFW Series
DIN125 Flat Washers

Specifications:

- Material: Nylon
- Color: See Table

Features:

- Resistant to corrosion and many chemicals
- DIN125



Item No.		ØA	ØB	C	Fits Screw	Pack Qty.	
Natural	Black	mm	mm	mm		Natural	Black
MFW010A	—	2.20	5.00	0.30	M2	1000	—
MFW020A	—	2.70	6.00	0.50	M2.5	1000	—
MFW030A	MFW030B	3.20	7.00	0.50	M3	1000	1000
MFW040A	—	3.70	8.00	0.50	M3.5	1000	—
MFW050A	MFW050B	4.30	9.00	0.80	M4	1000	1000
17M05DIN34815	MFW060B	5.30	10.00	1.00	M5	1000	1000
MFW070A	MFW070B	6.40	12.00	1.60	M6	1000	100
MFW080A	MFW080B	8.40	16.00	1.60	M8	1000	100
MFW090A	MFW090B	10.50	20.00	2.00	M10	1000	100
MFW100A	MFW100B	13.00	24.00	2.50	M12	500	100

Item No.		ØA	ØB	C	Fits Screw	Pack Qty.
Natural	Black	mm	mm	mm		
MFW110A	—	15.00	30.00	3.00	M14	1000
MFW120A	—	17.00	30.00	3.00	M16	250
MFW130A	—	19.00	34.00	3.00	M18	250
MFW140A	—	21.00	37.00	3.00	M20	250
MFW150A	—	25.00	44.00	4.00	M22	250
MFW160A	—	28.00	50.00	4.00	M24	250
MFW170A	—	31.00	56.00	4.00	M27	250
MFW180A	—	37.00	66.00	5.00	M30	250
MFW190A	—	40.00	72.00	6.00	M36	250