



Chipsmall Limited consists of a professional team with an average of over 10 year of expertise in the distribution of electronic components. Based in Hongkong, we have already established firm and mutual-benefit business relationships with customers from,Europe,America and south Asia,supplying obsolete and hard-to-find components to meet their specific needs.

With the principle of “Quality Parts,Customers Priority,Honest Operation,and Considerate Service”,our business mainly focus on the distribution of electronic components. Line cards we deal with include Microchip,ALPS,ROHM,Xilinx,Pulse,ON,Everlight and Freescale. Main products comprise IC,Modules,Potentiometer,IC Socket,Relay,Connector.Our parts cover such applications as commercial,industrial, and automotives areas.

We are looking forward to setting up business relationship with you and hope to provide you with the best service and solution. Let us make a better world for our industry!



Contact us

Tel: +86-755-8981 8866 Fax: +86-755-8427 6832

Email & Skype: info@chipsmall.com Web: www.chipsmall.com

Address: A1208, Overseas Decoration Building, #122 Zhenhua RD., Futian, Shenzhen, China



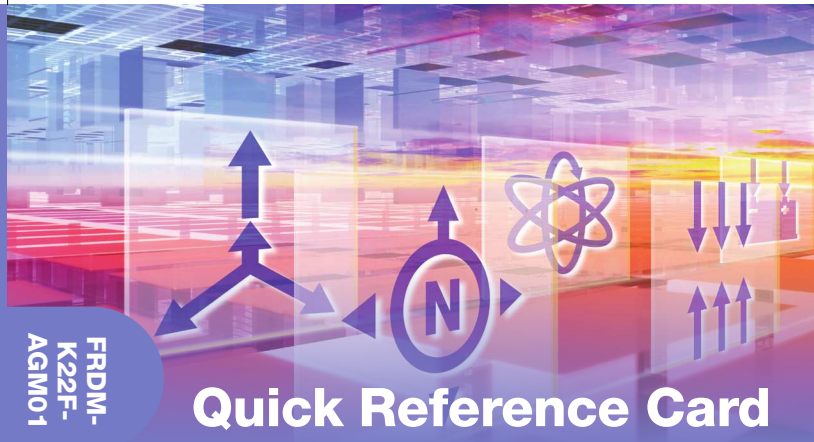
Freescale and the Freescale logo are trademarks of Freescale Semiconductor, Inc., Reg. U.S. Pat. & Tm. Off. All other product or service names are the property of their respective owners. © 2015 Freescale Semiconductor, Inc. FRDMK22FAGM01QRC REV0 920-76667 REV A



For more information, visit freescale.com/sensortoolbox

FRDM-K22F-AGM01

FRDM-K22F-AGM01



Quick Reference Card

FRDM-K22F-AGM01

9-axis Sensor Toolbox Development Board

Enabled for sensor fusion with FXAS21002C 3-axis gyroscope, FXOS8700C 6-axis integrated e-compass, and Freescale Freedom FRDM-K22F development board



Get Started

Download tools and documentation under **Jump-Start Your Design** at freescale.com/sensortoolbox



FREESCALE FREEDOM PLATFORM

- 1 Verify package contents:
 - FRDM-K22F/FRDM-STBC-AGM01 assembly
 - USB cable
- 2 Download the mbed Windows serial port driver: developer.mbed.org/handbook/Windows-serial-configuration
- 3 Plug one end of a USB cable into the SDA port on the assembly. Plug the other end of the cable into the USB port on the computer.
- 4 Download and install the latest Sensor Toolbox software at: freescale.com/sensortoolbox
- 5 Start the Sensor Toolbox software.

For more information, go to: freescale.com/sensortoolbox

FXOS8700C 6-axis sensor with integrated linear accelerometer and magnetometer
16 QFN (3 mm x 3 mm x 1.2 mm)

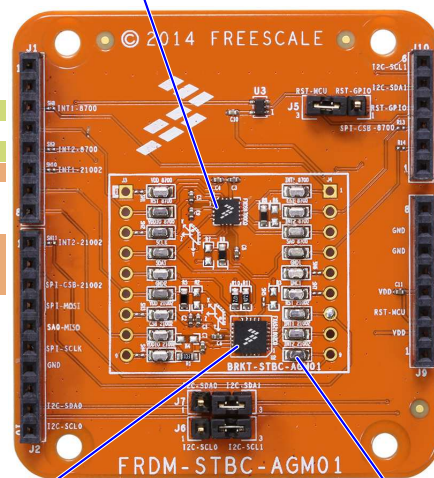
INT1-8700 - 3
INT2-8700 - 5
INT1-21002 - 6

INT2-21002 - 1

SPI-CSB-21002 - 3
SPI-MOSI - 4
SA0-MISO - 5
SPI-SCLK - 6
GND - 7

I2C_SDA0 - 9
I2C_SCL0 - 10

FXAS21002C 3-axis digital angular rate gyroscope
24 QFN (4 mm x 4 mm x 1 mm)



6 - I2C-SCL1
5 - I2C-SDA1
4 - RST-GPIO
3 - SPI-CSB-8700

7 - GND
6 - GND

4 - VDD
3 - RST-MCU
2 - VDD

Test points (18 places)

Get to Know the FRDM-K22F-AGM01



Learn more at freescale.com/sensortoolbox