



Chipsmall Limited consists of a professional team with an average of over 10 year of expertise in the distribution of electronic components. Based in Hongkong, we have already established firm and mutual-benefit business relationships with customers from,Europe,America and south Asia,supplying obsolete and hard-to-find components to meet their specific needs.

With the principle of “Quality Parts,Customers Priority,Honest Operation,and Considerate Service”,our business mainly focus on the distribution of electronic components. Line cards we deal with include Microchip,ALPS,ROHM,Xilinx,Pulse,ON,Everlight and Freescale. Main products comprise IC,Modules,Potentiometer,IC Socket,Relay,Connector.Our parts cover such applications as commercial,industrial, and automotives areas.

We are looking forward to setting up business relationship with you and hope to provide you with the best service and solution. Let us make a better world for our industry!



Contact us

Tel: +86-755-8981 8866 Fax: +86-755-8427 6832

Email & Skype: info@chipsmall.com Web: www.chipsmall.com

Address: A1208, Overseas Decoration Building, #122 Zhenhua RD., Futian, Shenzhen, China

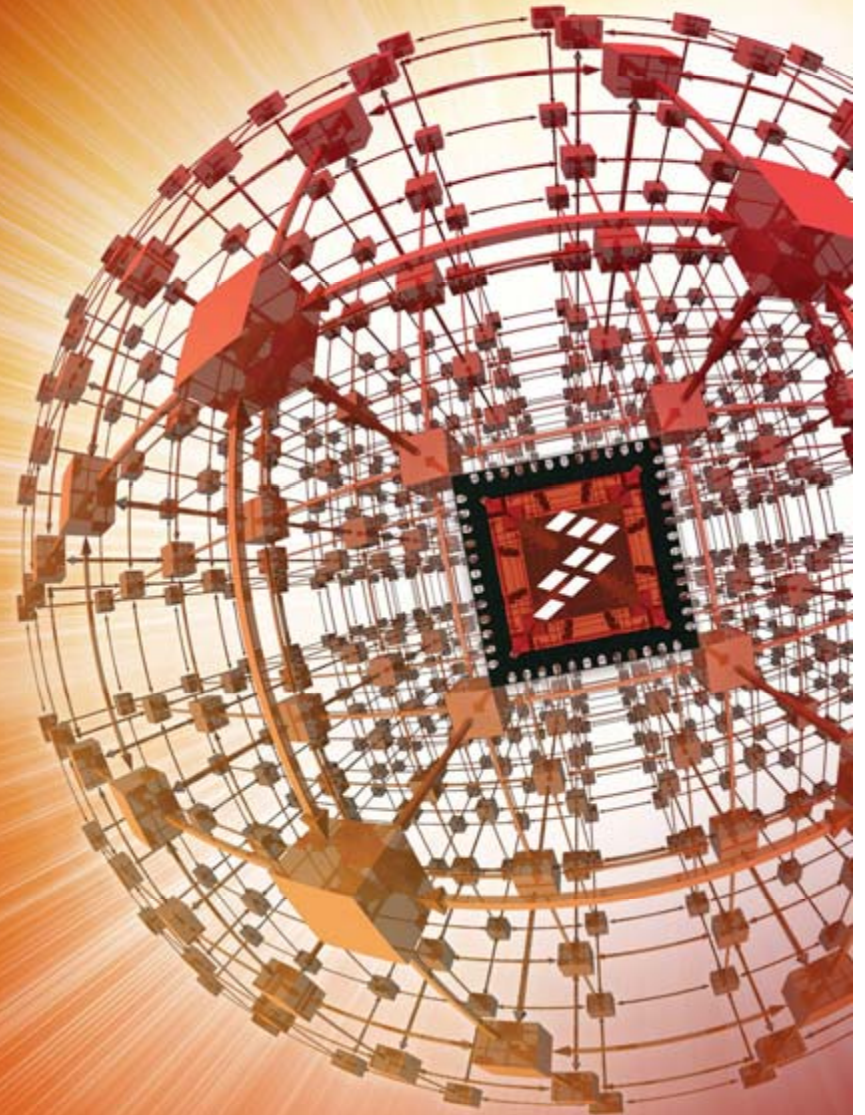


Kinetis KL0x MCU Family Summary

Contents:

- Kinetis KL0x Family Comparison Table
- Freescale Freedom development platforms
 - Kinetis KL0x family comparison table

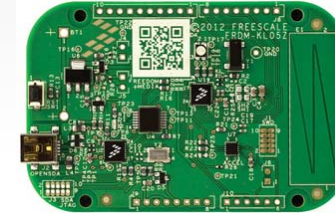
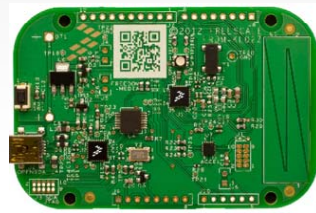
www.freescale.com/Kinetis



Kinetis KL0x MCU Family Comparison Table

Feature	KL02	KL03	KL04	KL05
Flash	8-32KB	8-32KB	8-32KB	8-32KB
RAM	1-4KB	2KB	1-4KB	1-4KB
Pin	16-32	16-24	24-48	24-48
GPIO	14-28	14-22	22-41	22-41
ADC	6-14ch	4-7ch	12-14ch	12-14ch
Clock	4M/32KHz IRC + FLL	8M/48MHz IRC	4M/32KHz IRC + FLL	4M/32KHz IRC + FLL
LLWU	-	2 wake up pins	YES	YES
LPTPM	2x2ch	2x2ch	1x2ch + 1x6ch	1x2ch + 1x6ch
PIT	-	-	1x2ch	1x2ch
I2C	2	1	1	1
RTC	-	YES	YES	YES
Cache	32B	-	64B	64B
DMA	-	-	4ch	4ch
DAC	-	-	-	12-bit
TSI	-	-	-	8-12ch
VREF	-	1.2V	-	-
Boot ROM	-	8KB	-	-
Sys RegFile	-	16B	-	-

Freescale Freedom Development Platforms for Kinetis KL0x Family of MCUs



Part Number	FRDM-KL02Z		FRDM-KL03Z		FRDM-KL05Z	
ARM® Cortex®-M0+ MCU based	MKL02Z32VFM4	48MHz	MKL03Z32VFM4	48MHz	MKL05Z32VFM4	48MHz
	32 KB Flash, 4 KB SRAM, 32QFN		32KB flash, 2KB SRAM, 24QFN		32KB flash, 4KB SRAM, 32QFN	
Capacitive touch slider	YES		YES		YES	
Accelerometer	MMA8451Q		MMA8451Q		MMA8451Q	
RGB Tri-color LED	YES		YES		YES	
Power supply options	coin cell battery & external source		coin cell battery & external source		coin cell battery & external source	
Easy access to MCU I/O	YES		YES		YES	
Sophisticated OpenSDA debug interface (USB)	YES		YES		YES	
Low-power operation	YES		YES		YES	
Pre-load demo apps	YES		YES		YES	
CMSIS-DAP interface	YES		YES		YES	
Arduino R3 compatibility	YES		YES		YES	
Other			Temperature sensor, 8K ROM with on-chip boot loader		mbed-enabled, derivative to KL04Z	
General Production Availability	Now		June		Now	