



Chipsmall Limited consists of a professional team with an average of over 10 year of expertise in the distribution of electronic components. Based in Hongkong, we have already established firm and mutual-benefit business relationships with customers from,Europe,America and south Asia,supplying obsolete and hard-to-find components to meet their specific needs.

With the principle of “Quality Parts,Customers Priority,Honest Operation,and Considerate Service”,our business mainly focus on the distribution of electronic components. Line cards we deal with include Microchip,ALPS,ROHM,Xilinx,Pulse,ON,Everlight and Freescale. Main products comprise IC,Modules,Potentiometer,IC Socket,Relay,Connector.Our parts cover such applications as commercial,industrial, and automotives areas.

We are looking forward to setting up business relationship with you and hope to provide you with the best service and solution. Let us make a better world for our industry!



## Contact us

Tel: +86-755-8981 8866 Fax: +86-755-8427 6832

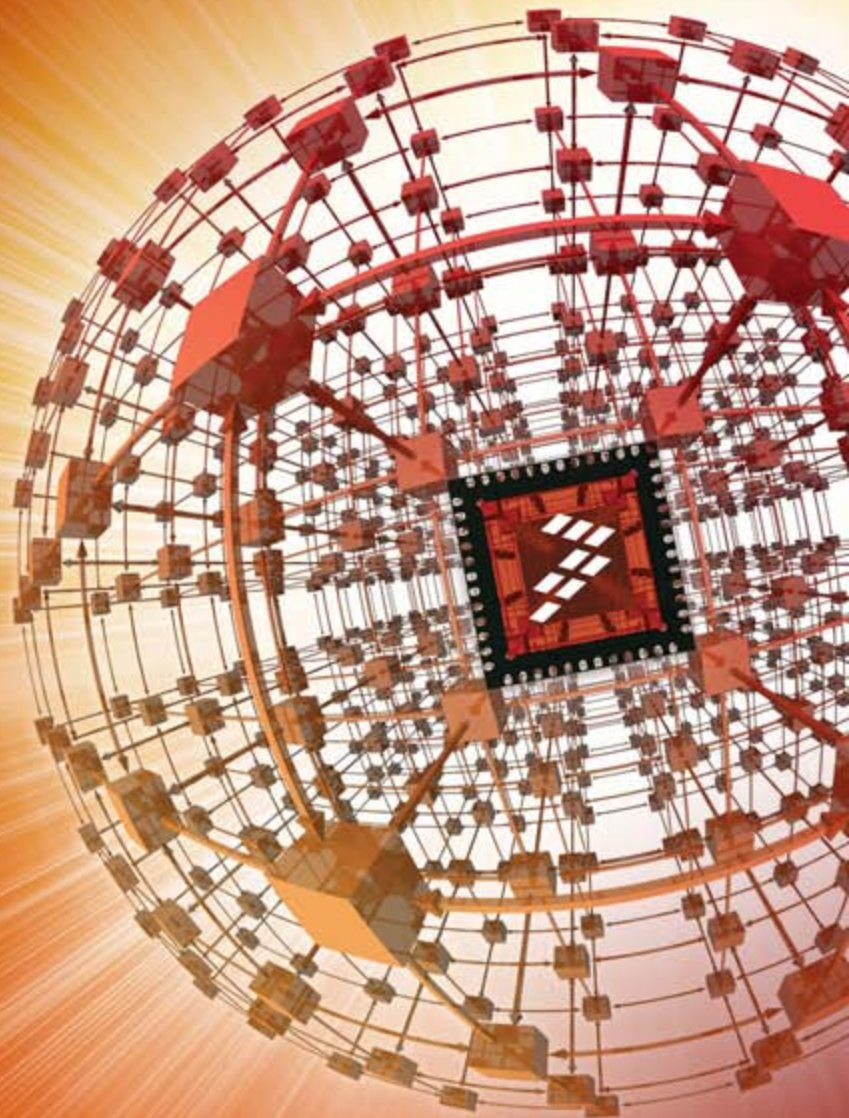
Email & Skype: info@chipsmall.com Web: www.chipsmall.com

Address: A1208, Overseas Decoration Building, #122 Zhenhua RD., Futian, Shenzhen, China



## Contents:

- Quick Start Package Overview
- Get to Know the FRDM-KL26Z
- Getting Started Out of the Box
- Introduction to OpenSDA
- Explore Further



[www.freescale.com/FRDM-KL26Z](http://www.freescale.com/FRDM-KL26Z)

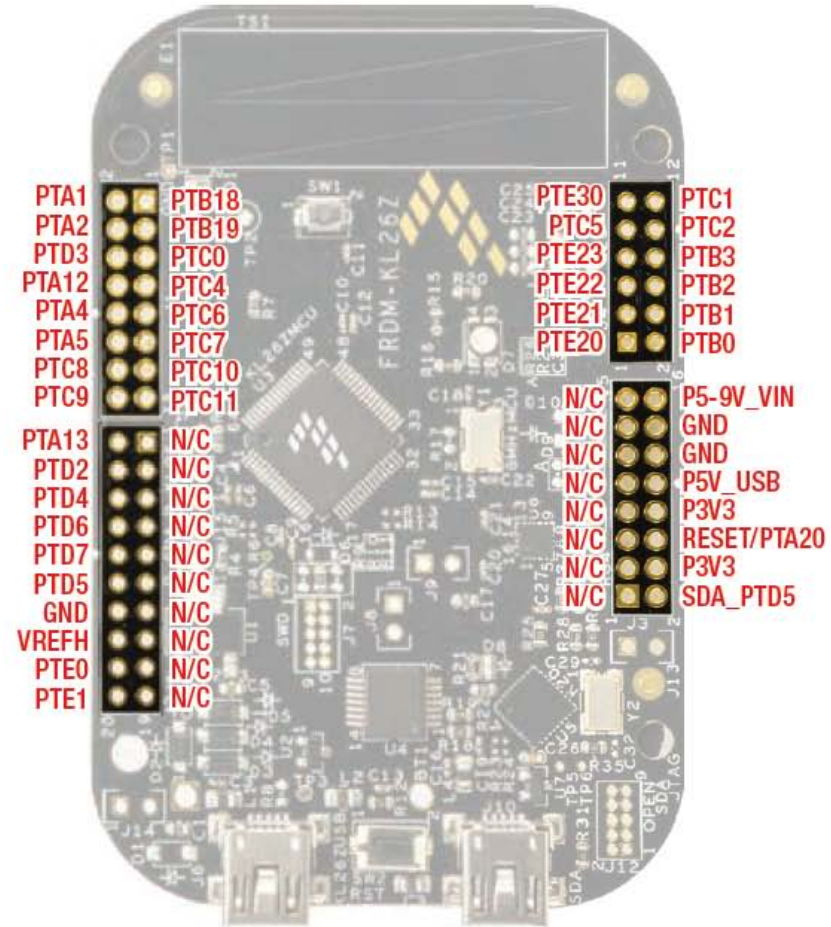
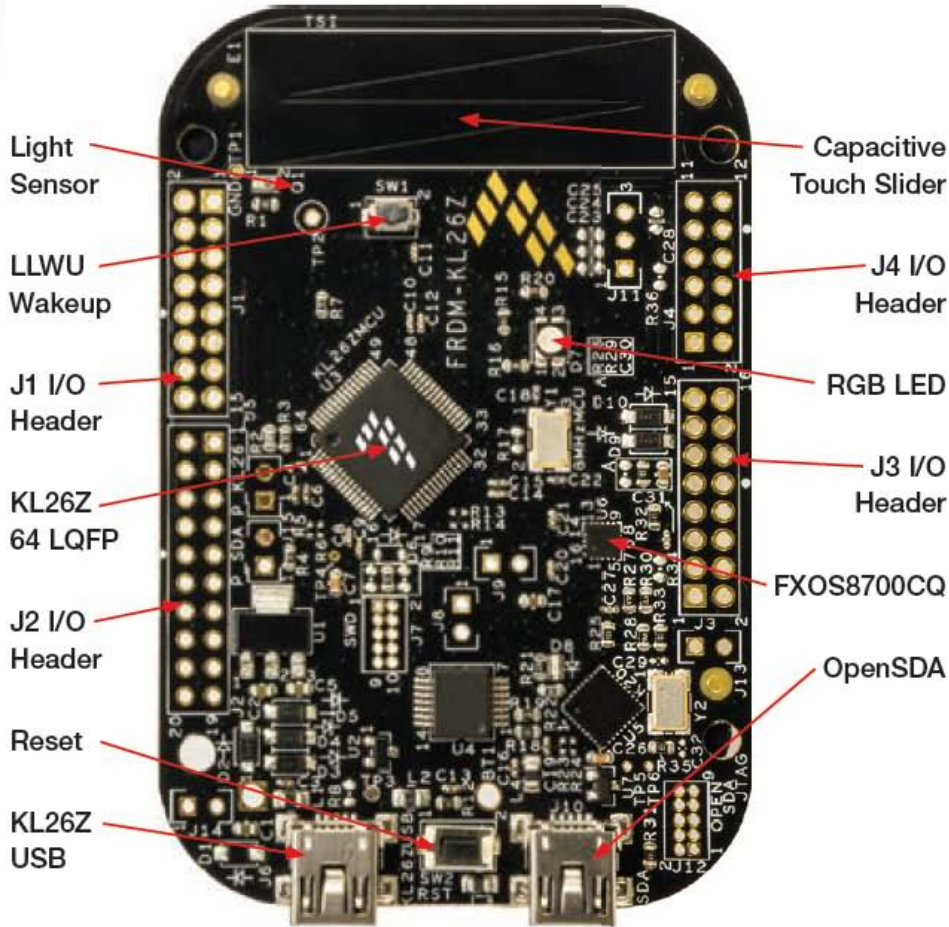
# Quick Start Package Overview

These documents are available as part of the Quick Start Package:

Name	Type	Description
Quick Start Guide	PDF	This document
OpenSDA Applications	Folder	OpenSDA Applications for the FRDM-KL26Z
Precompiled Examples	Folder	S-record images of example projects for use with the MSD Flash Programmer

Additional reference documents are available on [www.freescale.com/FRDM-KL26Z](http://www.freescale.com/FRDM-KL26Z) :

Name	Description
FRDM-KL26Z Quick Start Package	Quick Start Guide and supporting files for getting started with the FRDM-KL26Z.
FRDM-KL26Z User's Guide	This document—overview and detailed information for the FRDM-KL26Z hardware.
FRDM-KL26Z Pinouts	Spreadsheet of pin connections for all MCU pins. Includes pinout for the I/O headers, Arduino R3 compatibility chart, and OpenSDA MCU pinout.
FRDM-KL26Z Schematics	PDF schematics for the FRDM-KL26Z hardware
FRDM-KL26Z Design Package	Zip file containing all design source files for the FRDM-KL26Z hardware
OpenSDA User's Guide	Overview and instructions for use of the OpenSDA embedded debug circuit

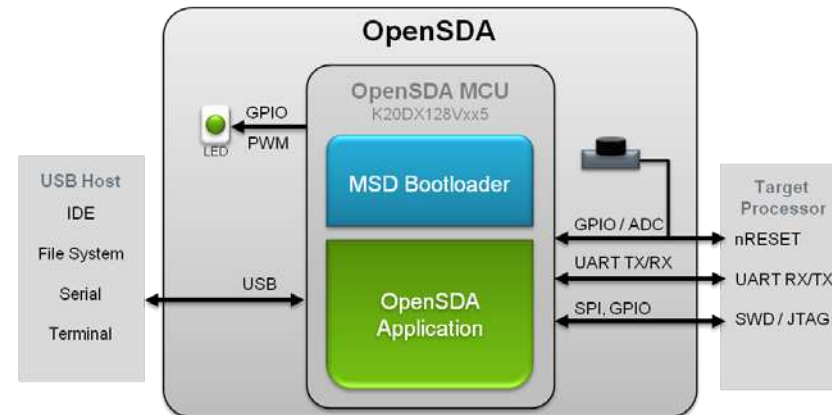
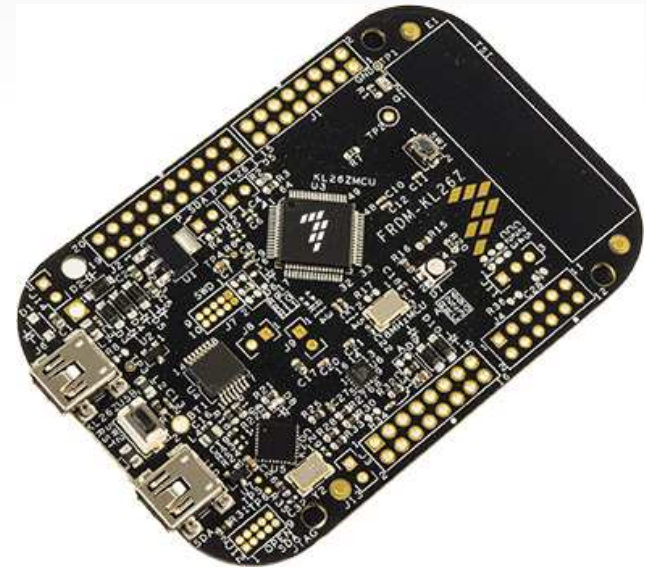


The Freescale Freedom development platform is a set of software and hardware tools for evaluation and development. It is ideal for rapid prototyping of microcontroller-based applications. The Freescale Freedom KL26Z hardware, FRDM-KL26Z, is a simple, yet sophisticated design featuring a Kinetis L Series microcontroller, the industry's first microcontrollers built on the ARM® Cortex™-M0+ core.

**Features:**

- MKL26Z128VLH4 MCU – 48MHz, 128KB Flash, 16KB SRAM, USB OTG (FS), 64LQFP
- Capacitive touch slider, FXOS8700CQ accelerometer and magnetometer, Tri-color LED, ambient light sensor
- Flexible power supply options – USB, coin cell battery, external source
- Easy access to MCU I/O
- Battery-ready, power-measurement access points
- Form factor compatible with Arduino™ R3 pin layout
- New, OpenSDA debug interface
  - Mass storage device flash programming interface (default) – no tool installation required to evaluate demo apps
  - P&E Debug interface provides run-control debugging and compatibility with IDE tools
  - CMSIS-DAP interface: new ARM standard for embedded debug interface

Refer to the *FRDM-KL26Z User's Guide* and *OpenSDA User's Guide* for more information.



# Getting Started Out of the Box

## Installing Drivers and Running the Out of Box Demo

**0** **Optional:** Download and Install the P&E OpenSDA USB Drivers found at [www.pemicro.com/opensda](http://www.pemicro.com/opensda).

**1** Plug in a USB cable (not included) from a USB host to the OpenSDA mini-B USB connector. The FRDM-KL26Z will be powered by this USB connection.

FRDM-KL26Z comes with the mass-storage device (MSD) Flash Programmer OpenSDA Application preinstalled. It will appear as a removable storage drive with a volume label of FRDM-KL26Z.

The MSD Flash Programmer also includes a USB virtual serial port which requires an `.INF` file for proper installation in Windows. The necessary `.INF` file is available in the P&E OpenSDA USB Drivers (Step 0) and also on the FRDM-KL26Z removable drive.

If the USB CDC Serial Port fails to automatically install in Windows, follow the instructions in Step 2. Otherwise, skip to Step 3.

- 2**
- [Open Device Manager](#)
  - Locate and right-click on “OpenSDA – CDC Serial Port”
  - Select “Update Driver Software”
  - “Browse” and select the FRDM-KL26Z drive
  - Click “Next” to complete the installation

**3** The pre-installed demo running on the KL26Z MCU will cycle through several colors on the RGB LED. After this completes, tilt the board. The color mix of the RGB LED will change based on the accelerometer data.

**4** Touch the capacitive slider. The touch position along the slider will determine the brightness of the LED.

OpenSDA is an open-standard serial and debug adapter. It bridges serial and debug communications between a USB host and an embedded target processor. OpenSDA software includes a flash-resident USB mass-storage device (MSD) bootloader and a collection of OpenSDA Applications. FRDM-KL26Z comes with the MSD Flash Programmer OpenSDA Application preinstalled. Follow these instructions to run the OpenSDA Bootloader and update or change the installed OpenSDA Application.

## Enter OpenSDA Bootloader Mode

- 1 Unplug the USB cable if attached.
- 2 Press and hold the Reset button (SW2).
- 3 Plug in a USB cable (not included) between a USB host and the OpenSDA USB connector (labeled “SDA”).
- 4 Release the Reset button.

A removable drive should now be visible in the host file system with a volume label of `BOOTLOADER`. You are now in OpenSDA Bootloader mode.

**IMPORTANT NOTE:** Follow the “Load an OpenSDA Application” instructions to update the MSD Flash Programmer on your FRDM-KL26Z to the latest version. It is likely that the version provided in this package is newer than what was preprogrammed on your FRDM-KL26Z.

## Load an OpenSDA Application

- 1 While in OpenSDA Bootloader mode, double-click `SDA_INFO.HTML` in the `BOOTLOADER` drive. A web browser will open the OpenSDA homepage containing the name and version of the installed Application. This information can also be read as text directly from `SDA_INFO.HTML`.
- 2 Locate the `OpenSDA Applications` folder in the FRDM-KL26Z Quick Start Package.
- 3 Copy & paste or drag & drop the MSD Flash Programmer Application (`MSD-FRDM-KL26Z_vXYZ_Pemicro.SDA`) to the `BOOTLOADER` drive.
- 4 Unplug the USB cable and plug it in again. The new OpenSDA Application should now be running and a `FRDM-KL26Z` drive should be visible in the host file system.

You are now running the latest version of the MSD Flash Programmer. Use this same procedure to load other OpenSDA Applications.

The MSD Flash Programmer is a composite USB application that provides a virtual serial port and an easy and convenient way to program applications into the KL26Z MCU. It emulates a FAT16 file system, appearing as a removable drive in the host file system with a volume label of `FRDM-KL26Z`. Raw binary and Motorola S-record files that are copied to the drive are programmed directly into the flash of the KL26Z and executed automatically. The virtual serial port enumerates as a standard serial port device that can be opened with standard serial terminal applications.

## Using the MSD Flash Programmer

- 1 Locate the `Precompiled Examples` folder in the FRDM-KL26Z Quick Start Package.
- 2 Copy & paste or drag & drop one of the `.srec` files to the `FRDM-KL26Z` drive.

The new application should now be running on the FRDM-KL26Z. Starting with v1.03 of the MSD Flash Programmer, you can program repeatedly without the need to unplug and reattach the USB cable before reprogramming.

Program `FRDM_KL26Z_OOBE_Demo.srec` example to replace the out-of-box demo on your FRDM-KL26Z.

## Using the Virtual Serial Port

- 1 Determine the symbolic name assigned to the FRDM-KL26Z virtual serial port. In Windows [open Device Manager](#) and look for the COM port named “PEMicro/Freescale – CDC Serial Port”.

**NOTE:** Flash programming with the MSD Flash Programmer is currently only supported on Windows operating systems. However, the virtual serial port has been successfully tested on Windows, Linux and Mac operating systems.

- 2 Open the serial terminal emulation program of your choice. Examples for Windows include [Tera Term](#), [PuTTY](#), and [HyperTerminal](#).
- 3 Program one of the “serial test” applications from the `Precompiled Examples` folder using the MSD Flash Programmer.
- 4 Configure the terminal program. Most embedded examples use 8 data bits, no parity bits, and one stop bit (8-N-1). Match the baud rate to the selected serial test application and open the port.
- 5 Press and release the Reset button (SW2) at anytime to restart the example application. Resetting the embedded application will not affect the connection of the virtual serial port to the terminal program.

**NOTE:** Refer to the *OpenSDA User's Guide* for a description of a known Windows issue when disconnecting a virtual serial port while the COM port is in use.





Now that you are familiar with the FRDM-KL26Z and OpenSDA, it's time to explore the additional software and lab guides available on [www.freescale.com/FRDM-KL26Z](http://www.freescale.com/FRDM-KL26Z). Select your next path from the links in the **Jump Start Your Design** section.

***How to Reach Us:***

**Home Page:**  
[freescale.com](http://freescale.com)

**Web Support:**  
[freescale.com/support](http://freescale.com/support)

Information in this document is provided solely to enable system and software implementers to use Freescale products. There are no express or implied copyright licenses granted hereunder to design or fabricate any integrated circuits based on the information in this document.

Freescale reserves the right to make changes without further notice to any products herein. Freescale makes no warranty, representation, or guarantee regarding the suitability of its products for any particular purpose, nor does Freescale assume any liability arising out of the application or use of any product or circuit, and specifically disclaims any and all liability, including without limitation consequential or incidental damages. "Typical" parameters that may be provided in Freescale data sheets and/or specifications can and do vary in different applications, and actual performance may vary over time. All operating parameters, including "typicals," must be validated for each customer application by customer's technical experts. Freescale does not convey any license under its patent rights nor the rights of others. Freescale sells products pursuant to standard terms and conditions of sale, which can be found at the following address: [freescale.com/SalesTermsandConditions](http://freescale.com/SalesTermsandConditions).

Freescale, the Freescale logo, and Kinetis are trademarks of Freescale Semiconductor, Inc., Reg. U.S. Pat. & Tm. Off. ARM is the registered trademark of ARM Limited. ARM Cortex-M0+ is the trademark of ARM Limited. All other product or service names are the property of their respective owners.

© 2013 Freescale Semiconductor, Inc.