



Chipsmall Limited consists of a professional team with an average of over 10 year of expertise in the distribution of electronic components. Based in Hongkong, we have already established firm and mutual-benefit business relationships with customers from,Europe,America and south Asia,supplying obsolete and hard-to-find components to meet their specific needs.

With the principle of “Quality Parts,Customers Priority,Honest Operation,and Considerate Service”,our business mainly focus on the distribution of electronic components. Line cards we deal with include Microchip,ALPS,ROHM,Xilinx,Pulse,ON,Everlight and Freescale. Main products comprise IC,Modules,Potentiometer,IC Socket,Relay,Connector.Our parts cover such applications as commercial,industrial, and automotives areas.

We are looking forward to setting up business relationship with you and hope to provide you with the best service and solution. Let us make a better world for our industry!



Contact us

Tel: +86-755-8981 8866 Fax: +86-755-8427 6832

Email & Skype: info@chipsmall.com Web: www.chipsmall.com

Address: A1208, Overseas Decoration Building, #122 Zhenhua RD., Futian, Shenzhen, China





For more information,
visit [freescale.com/
sensortoolbox](http://freescale.com/sensortoolbox)

FRDM
KL25-
P3115

Freescale and the Freescale logo are trademarks of Freescale Semiconductor, Inc., Reg. U.S. Pat. & Tm. Off. All other product or service names are the property of their respective owners.
© 2015 Freescale Semiconductor, Inc.
FRDMK25FP3115QRC REV 1
920-28986 REV A

FRDMKL25-P3115

FRDM
KL25-
P3115

Quick Reference Card

Pressure Sensor Toolbox Demonstration Kit

FRDMSTBC-P3115 with MPL3115A2 I²C precision altimeter and Freescale Freedom FRDM-KL25Z development board



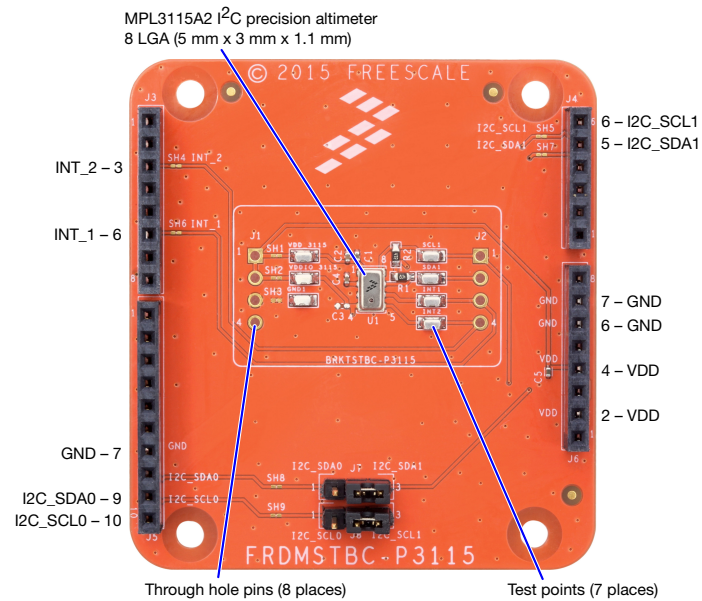
Get Started

Download tools and documentation under
Jump Start Your Design
at [freescale.com/
sensortoolbox](http://freescale.com/sensortoolbox)



FREESCALE FREEDOM PLATFORM

- 1 Verify package contents:
 - FRDM-KL25Z/FRDMSTBC-P3115 assembly
 - USB cable
 - Flexible tube
- 2 Download the mbed Windows serial port driver: developer.mbed.org/handbook/Windows-serial-configuration
- 3 Plug one end of a USB cable into the SDA port on the assembly. Plug the other end of the cable into the USB port on the computer.
- 4 Download and install the latest Sensor Toolbox software at: freescale.com/sensortoolbox
- 5 Start the Sensor Toolbox software.



Get to Know the FRDMKL25-P3115



Learn more at freescale.com/sensortoolbox