



Chipsmall Limited consists of a professional team with an average of over 10 year of expertise in the distribution of electronic components. Based in Hongkong, we have already established firm and mutual-benefit business relationships with customers from,Europe,America and south Asia,supplying obsolete and hard-to-find components to meet their specific needs.

With the principle of “Quality Parts,Customers Priority,Honest Operation,and Considerate Service”,our business mainly focus on the distribution of electronic components. Line cards we deal with include Microchip,ALPS,ROHM,Xilinx,Pulse,ON,Everlight and Freescale. Main products comprise IC,Modules,Potentiometer,IC Socket,Relay,Connector.Our parts cover such applications as commercial,industrial, and automotives areas.

We are looking forward to setting up business relationship with you and hope to provide you with the best service and solution. Let us make a better world for our industry!



Contact us

Tel: +86-755-8981 8866 Fax: +86-755-8427 6832

Email & Skype: info@chipsmall.com Web: www.chipsmall.com

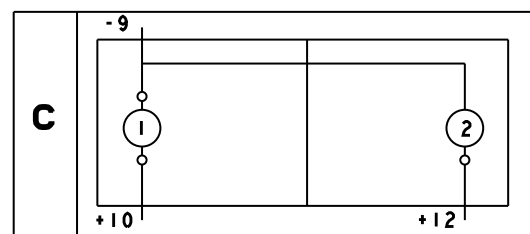
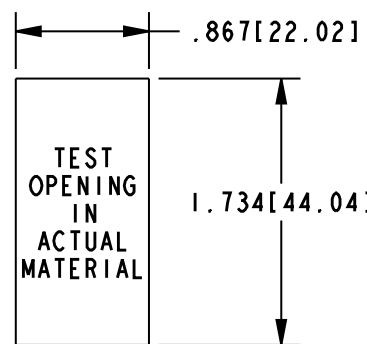
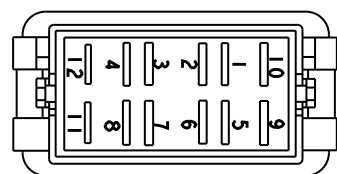
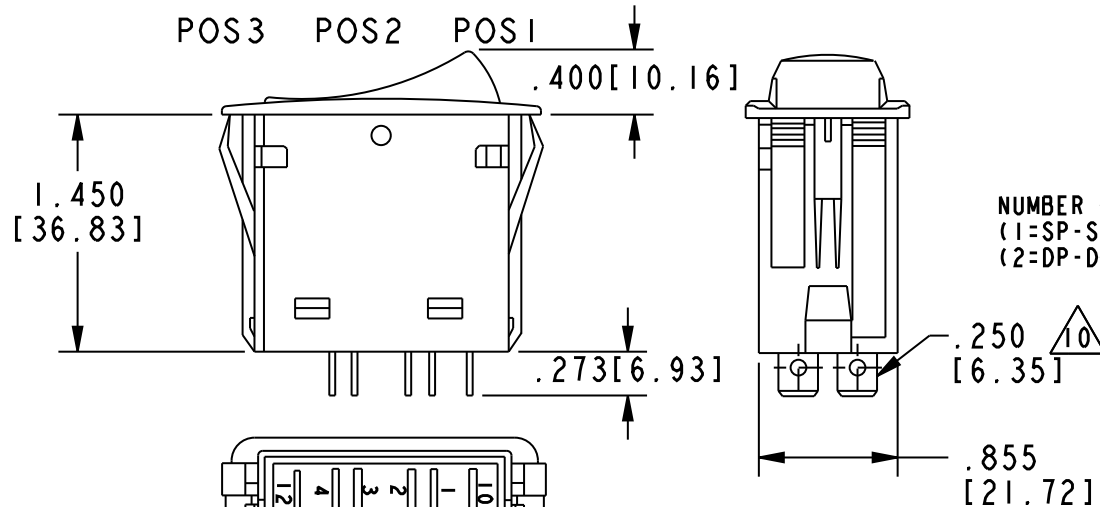
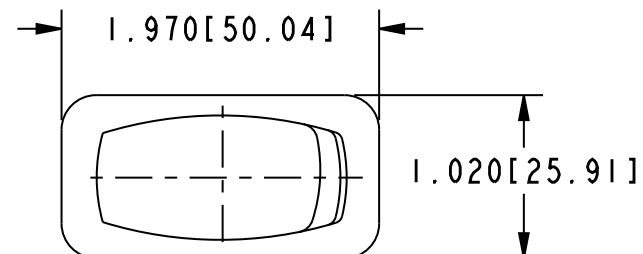
Address: A1208, Overseas Decoration Building, #122 Zhenhua RD., Futian, Shenzhen, China



HONEYWELL
PART NUMBER



REV	DOCUMENT	CHANGED BY	CHECK
B	0062802	VKR 24MAR10	CMH



LAMP ⁷
(A=AMBER, G=GREEN, R=RED, N=NONE)

ILLUMINATION STYLE ⁹

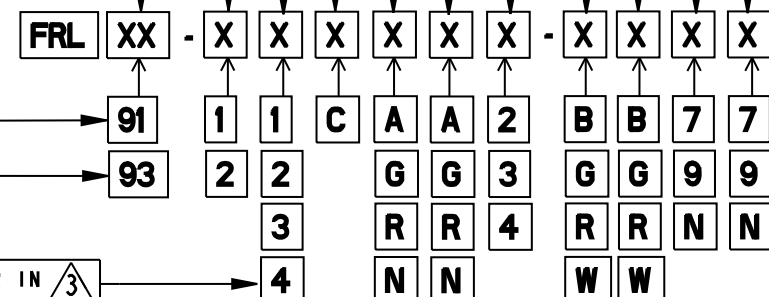
CIRCUITRY ⁵

NUMBER OF POLES
(1=SP-SINGLE POLE, USES TERMINAL 1-2-4)
(2=DP-DOUBLE POLE, USES TERMINALS 1-2-4 AND 5-6-8)

TERMINAL STYLE ¹⁰

.250 [6.35] WIDE QUICK
CONNECT TABS ¹⁰
.187 [4.76] WIDE QUICK
CONNECT TABS ¹⁰

	CIRCUIT MADE WITH ROCKER IN ³		
	POSITION 3 (1&2, 5&6)	POSITION 2	POSITION 1 (2&4, 6&8)
1	ON	OFF	ON
2	OFF	NONE	ON
3	ON	NONE	ON
4	(OFF)	NONE	ON
5	(ON)	OFF	ON
6	OFF	NONE	(ON)
7	(ON)	OFF	(ON)
8	(ON)	NONE	ON



LAMP ⁸
(A=AMBER, G=GREEN, R=RED, N=NONE)

LED VOLTAGE
(2=6V, 3=12V, 4=24V)

ACTUATOR COLOR
(B=BLACK, G=GRAY, R=RED, W=WHITE)

BASE/BEZEL COLOR
(B=BLACK, G=GRAY, R=RED, W=WHITE)

LENS STYLE AND COLOR ⁷
7 = LARGE WHITE TRANSLUCENT.
9 = WHITE TRANSPARENT BAR.
N = NONE

LENS STYLE AND COLOR ⁸
7 = LARGE WHITE TRANSLUCENT.
9 = WHITE TRANSPARENT BAR.
N = NONE

ELECTRICAL RATING & APPROVALS ¹⁰
FOR .250 WIDE TABS: 20A, 12V
FOR .187 WIDE TABS: 15A, 12V

- NOTES
- 1 - OPERATING TEMPERATURE RANGE: -40°F TO +185°F (-40°C TO +85°C)
 - 2 - ELECTRICAL LIFE: 50,000 CYCLES MOMENTARY, 100,000 CYCLES MAINTAINED.
 - 3 - MECHANICAL LIFE: 250,000 CYCLES MIN
 - ⁴ - SEE DIAGRAM FOR CATALOGING SCHEME
 - ⁵ - PARENTHESIS DENOTE MOMENTARY ACTION
 - ⁶ - SEALED TO IP67
 - ⁷ - ABOVE TERMINALS 9 AND 10
 - ⁸ - ABOVE TERMINALS 11 AND 12
 - ⁹ - REFER TO CIRCUIT DIAGRAMS
 - ¹⁰ - TERMINAL WIDTH AND ELECTRICAL RATING DEPENDENT ON STYLE SELECTED

DESIGN UNITS: INCH
TOLERANCES UNLESS NOTED:

NO PLACES	X	±	.040
ONE PLACE	.X	±	.030
TWO PLACE	.XX	±	.015
THREE PLACE	.XXX	±	.015
FOUR PLACE	.XXXX	±	.0005
ANGLES	X	±	2°

THIRD ANGLE PROJECTION

DRAWN	CR	13 JUN 05
CHECK	RJ	13 JUN 05
THIS DRAWING COVERS A PROPRIETARY ITEM AND IS THE PROPERTY OF HONEYWELL. THIS DRAWING IS NOT TO BE COPIED OR USED WITHOUT THE PERMISSION OF HONEYWELL.		
INTERPRET PER ASME Y14.5M-1994 OTHER HONEYWELL ENGINEERING STANDARDS MAY APPLY		
Pro/ENGINEER	2D	

Honeywell			
TITLE SWITCH, ROCKER			
SIZE	TYPE	DRAWING NAME	REV
B	I	FRL SERIES CHART 1	B
SCALE	NTS	SHEET	1 OF 1