



Chipsmall Limited consists of a professional team with an average of over 10 year of expertise in the distribution of electronic components. Based in Hongkong, we have already established firm and mutual-benefit business relationships with customers from,Europe,America and south Asia,supplying obsolete and hard-to-find components to meet their specific needs.

With the principle of “Quality Parts,Customers Priority,Honest Operation,and Considerate Service”,our business mainly focus on the distribution of electronic components. Line cards we deal with include Microchip,ALPS,ROHM,Xilinx,Pulse,ON,Everlight and Freescale. Main products comprise IC,Modules,Potentiometer,IC Socket,Relay,Connector.Our parts cover such applications as commercial,industrial, and automotives areas.

We are looking forward to setting up business relationship with you and hope to provide you with the best service and solution. Let us make a better world for our industry!



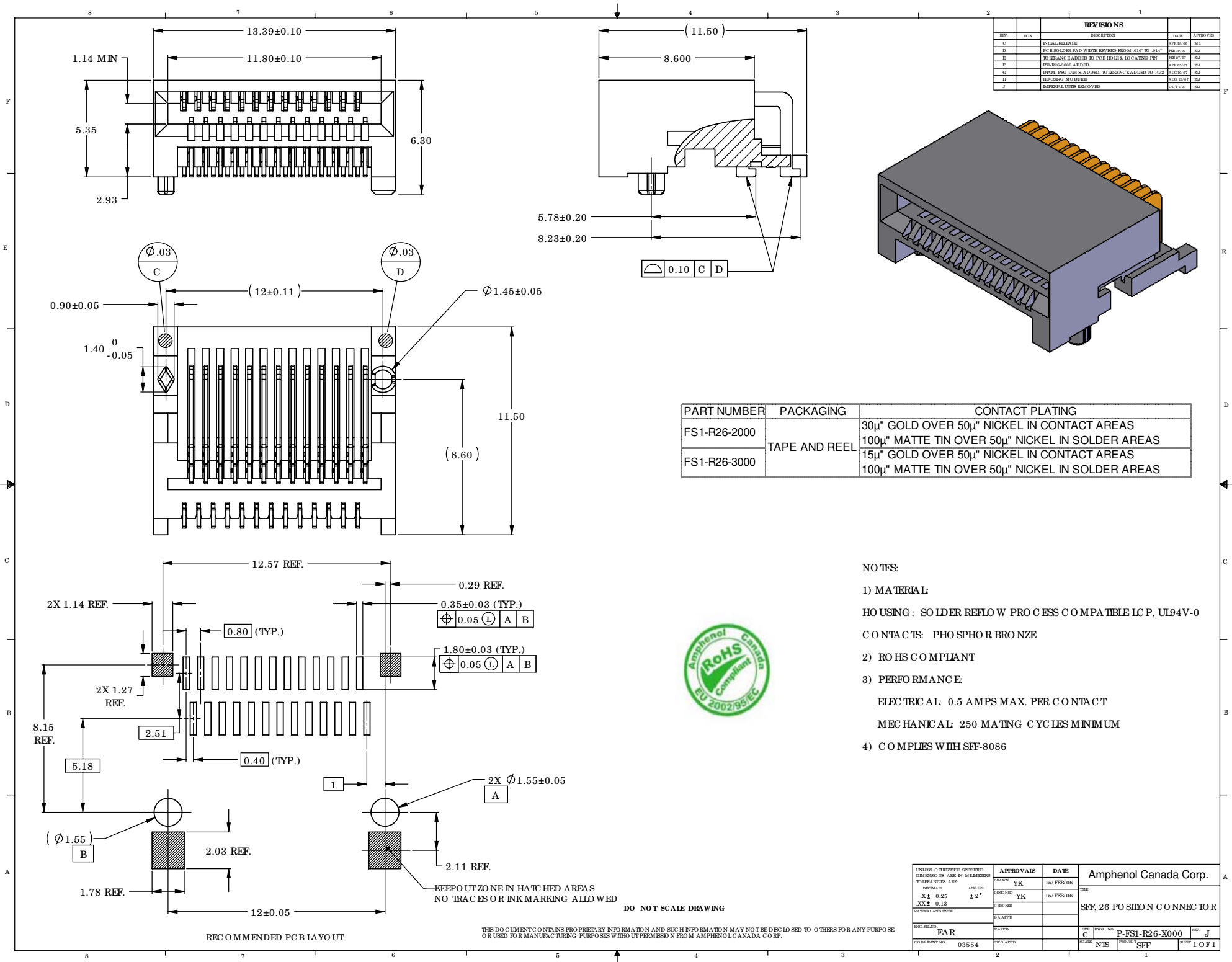
Contact us

Tel: +86-755-8981 8866 Fax: +86-755-8427 6832

Email & Skype: info@chipsmall.com Web: www.chipsmall.com

Address: A1208, Overseas Decoration Building, #122 Zhenhua RD., Futian, Shenzhen, China





REVISIONS				
REV.	REV. N	DESCRIPTION	DATE	APPROVED
C		INITIAL RELEASE	APR18/06	ML
D		PCB SOLDER PAD WIDTHS RED FROM .010" TO .014"	SEP 18/07	ML
E		TOLERANCE ADDED TO PCB RELEASE LEADING PIN	SEP 17/07	ML
F		PRE-26-3000 ADDED	APR 03/07	ML
G		DIM. PRE-26'S ADDED, TOLERANCE ADDED TO #72	AUG 16/07	ML
H		REVIEWS MODIFIED	AUG 23/07	ML
J		REVISIONS REMOVED	OCT 07/07	ML

PART NUMBER	PACKAGING	CONTACT PLATING
FS1-R26-2000	TAPE AND REEL	30µ" GOLD OVER 50µ" NICKEL IN CONTACT AREAS 100µ" MATTE TIN OVER 50µ" NICKEL IN SOLDER AREAS
FS1-R26-3000		15µ" GOLD OVER 50µ" NICKEL IN CONTACT AREAS 100µ" MATTE TIN OVER 50µ" NICKEL IN SOLDER AREAS

- NO TESTS:
- MATERIAL
HOUSING: SOLDER REFLOW PROCESS COMPATIBLE LCP, UL94V-0
CONTACTS: PHOSPHOR BRONZE
 - ROHS COMPLIANT
 - PERFORMANCE
ELECTRICAL: 0.5 AMPS MAX. PER CONTACT
MECHANICAL: 250 MATING CYCLES MINIMUM
 - COMPLIES WITH SFF-8086



THIS DOCUMENT CONTAINS PROPRIETARY INFORMATION AND SUCH INFORMATION MAY NOT BE DISCLOSED TO OTHERS FOR ANY PURPOSE OR USED FOR MANUFACTURING PURPOSES WITHOUT PERMISSION FROM AMPHENOL CANADA CORP.

UNLESS OTHERWISE SPECIFIED DIMENSIONS ARE IN MILLIMETERS TOLERANCES ARE:		APPROVALS		DATE	Amphenol Canada Corp.
SIG. MASS	ANGLE	DESIGN	YK	15/FEB/06	
X ± 0.25	± 2°	CHKD	YK <td>15/FEB/06</td> <td></td>	15/FEB/06	
XX ± 0.13		CHKD			SFF, 26 POSITION CONNECTOR
MATERIALS FROM		QA APPD			
ENG. DESIGNED		APPD			
FOR DESIGN NO. 03554		CHKD APPD			REV. C
					REV. NTS
					P-FS1-R26-X000
					REV. J
					SFF
					PAGE 1 OF 1

RECOMMENDED PCB LAYOUT

DO NOT SCALE DRAWING

KEEP OUT ZONE IN HATCHED AREAS
NO TRACES OR INK MARKING ALLOWED