



Chipsmall Limited consists of a professional team with an average of over 10 year of expertise in the distribution of electronic components. Based in Hongkong, we have already established firm and mutual-benefit business relationships with customers from,Europe,America and south Asia,supplying obsolete and hard-to-find components to meet their specific needs.

With the principle of “Quality Parts,Customers Priority,Honest Operation,and Considerate Service”,our business mainly focus on the distribution of electronic components. Line cards we deal with include Microchip,ALPS,ROHM,Xilinx,Pulse,ON,Everlight and Freescale. Main products comprise IC,Modules,Potentiometer,IC Socket,Relay,Connector.Our parts cover such applications as commercial,industrial, and automotives areas.

We are looking forward to setting up business relationship with you and hope to provide you with the best service and solution. Let us make a better world for our industry!



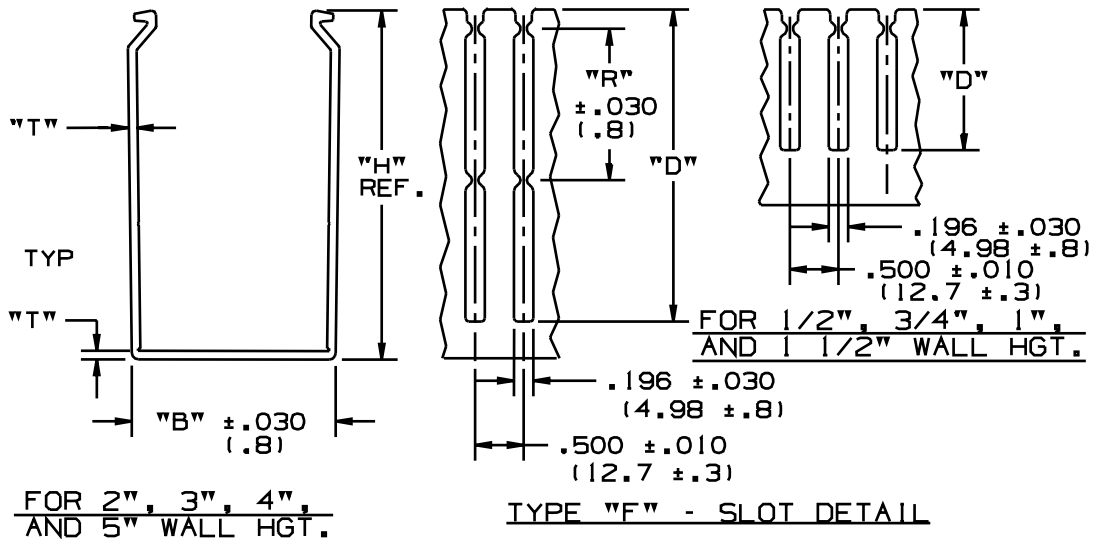
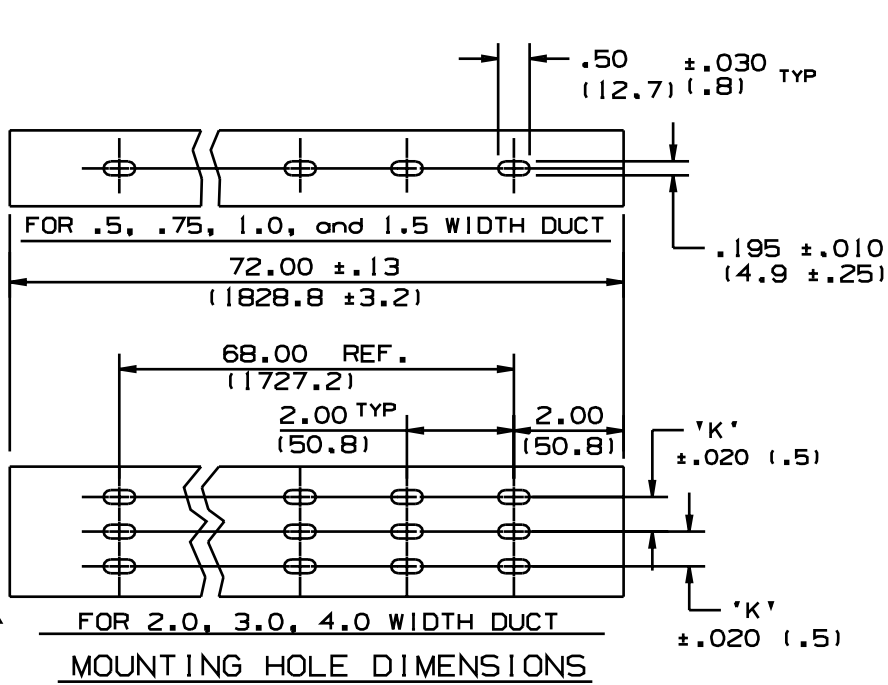
## Contact us

Tel: +86-755-8981 8866 Fax: +86-755-8427 6832

Email & Skype: info@chipsmall.com Web: www.chipsmall.com

Address: A1208, Overseas Decoration Building, #122 Zhenhua RD., Futian, Shenzhen, China





PART NO. SYSTEM CHANNEL EXAMPLE:

FS 1.5 x 2 6 NM -A  
 TYPE 1.5" WIDE 2" HIGH COLOR LENGTH (FT) NO MOUNTING HOLES ADHESIVE BACKED

- NOTES:
- "B" MEASURED AT BASE.
  - STANDARD LENGTH: 6 ft. (1.83m).
  - SEE CURRENT CATALOG FOR PART NUMBER DESIGNATIONS FOR TYPE, COLOR, AND LENGTH.
  - TYPE "FS" SOLID WALL DUCT, IS AVAILABLE, WITH SAME DIMENSIONS, BUT WITHOUT SLOTS IN THE WALLS.
  - DUCT TYPES "FS" AND "F" TO BE USED WITH TYPE "C" COVER. (SEE DWG # 34518-17)
  - DIMENSIONS IN PARENTHESES ARE IN METRIC.
  - ADHESIVE BACKED DUCT AND/OR DUCT WITH OR WITHOUT HOLES IS ALSO AVAILABLE.

WAS DPC\_PVC\_F\_US\_01 (2)

CAD FILENAME/LAYERS D34301BA\_PVC\_F\_US\_02A.prt

-	.....	---	---	J. REV'D "T" DIM'S AND TOL'S.	.....	---	---	
-	.....	---	---	I. REV'D EXAMPLE: ADDED LENGTH H. ADDED HOLES TO VIEW	.....	---	---	
-	.....	---	---	G. CHANGED NOTES 4 & 7. F. CHANGED TITLE TO INCLUDE "FS"	.....	---	---	
4	8-3-01	JCST	JKG	E. ADDED DUCT SIZES: .75x1, .75x2, 2.5x3, AND 4x1.5.	34301-03	JKG	JKG	
3	01-24-97	JBA	CEF	D. REV'D EXAMPLE: ADDED S, NM & -A. C. ADDED NOTE #7.	34301-03	CEF	CEF	
2	10-18-95	DW	CEF	B. REV'D "T" DIM'S AND TOL'S.	34301-03	CEF		
1	10-26-93	DW	CEF	A. ADDED FS6X4 DUCT SIZE.	34301-03	CEF		
R	3/17/93	DW	BKR	RELEASED TO PRODUCTION.	34301-03	CEF		
REV	DATE	BY	CHK	DESCRIPTION	ECN	CHK	CUST	SUP

**PANDUIT** CORP. TINLEY PARK, ILLINOIS

WIRING DUCT, TYPE "F" & "FS" CUSTOMER DRAWING

UNLESS OTHERWISE SPECIFIED, DIMENSIONAL TOLERANCES ARE:  
 (.X) ± (.XXX) ±  
 (.XX) ± .1213.11 ANGLES ±

UNLESS OTHERWISE SPECIFIED, ALL DIMENSIONS ARE GIVEN IN INCHES, THIRD ANGLE PROJECTION.

DRAWN BY LDB MAT'L: POLYVINYL CHLORIDE

DATE 3/1/93

CHECKED BY BKR

SCALE NONE

DRAWING NO. 34301-03 Sht 1 of 2

DWG SIZE A

THIS COPY IS PROVIDED ON A RESTRICTED BASIS AND IS NOT TO BE USED IN ANY WAY DETRIMENTAL TO THE INTERESTS OF PANDUIT CORP.



NOMINAL DUCT SIZE (W X H)	B	D	D TOL	H REF	K	T	T TOL	R
.5 X .5	.69 (17.5)	.38 (9.7)	±.014 (.4)	.50 (12.7)	ON C/L	.050 (1.3)	±.008 (.2)	N/A
.5 X 1	.75 (19.1)	.75 (19.1)	±.020 (.5)	1.00 (25.4)		.055 (1.4)	±.010 (.3)	N/A
.75 X .75	.94 (23.8)	.56 (14.3)	∅	.75 (19.1)		±.008 (.2)	∅	N/A
> .75 X 1	∅	N/A	N/A	1.00 (25.4)	N/A	∅	∅	N/A
> .75 X 1.5	∅	1.20 (30.5)	±.020 (.5)	1.50 (38.1)	ON C/L	.070 (1.8)	±.010 (.3)	N/A
> .75 X 2	∅	N/A	N/A	2.00 (50.8)	N/A	.080 (2.0)	±.008 (.2)	N/A
1 X 1	1.25 (31.8)	.75 (19.1)	±.020 (.5)	1.00 (25.4)	ON CENTERLINE	.055 (1.4)	±.010 (.3)	N/A
1 X 1.5	∅	1.20 (30.5)	∅	1.50 (38.1)		.070 (1.8)	±.008 (.2)	N/A
1 X 2	∅	1.63 (41.4)	±.030 (.8)	2.00 (50.8)		.080 (2.0)	±.015 (.4)	.712 (18.1)
1 X 3	∅	2.63 (66.8)	∅	3.00 (76.2)		.095 (2.4)	±.012 (.3)	1.212 (30.8)
1 X 4	∅	3.63 (92.2)	∅	4.00 (101.6)		.105 (2.7)	±.019 (.5)	1.700 (43.2)
1.5 X 1	1.75 (44.5)	.75 (19.1)	±.020 (.5)	1.00 (25.4)		.060 (1.5)	±.010 (.3)	N/A
1.5 X 1.5	∅	1.20 (30.5)	∅	1.50 (38.1)		.070 (1.8)	±.012 (.3)	N/A
1.5 X 2	∅	1.63 (41.4)	±.030 (.8)	2.00 (50.8)		.080 (2.0)	∅	.712 (18.1)
1.5 X 3	∅	2.63 (66.8)	∅	3.00 (76.2)		.095 (2.4)	±.010 (.3)	1.212 (30.8)
1.5 X 4	∅	3.63 (92.2)	∅	4.00 (101.6)		.105 (2.7)	±.012 (.3)	1.700 (43.2)

N/A = NOT AVAILABLE

NOMINAL DUCT SIZE (W X H)	B	D	D TOL	H REF	K	T	T TOL	R
2 X 1	2.25 (57.2)	.75 (19.1)	±.020 (.5)	1.00 (25.4)	.50 (12.7)	.060 (1.5)	±.010 (.3)	N/A
2 X 1.5	∅	1.20 (30.5)	∅	1.50 (38.1)	∅	.070 (1.8)	±.012 (.3)	N/A
2 X 2	∅	1.63 (41.4)	±.030 (.8)	2.00 (50.8)	∅	.080 (2.0)	∅	.712 (18.1)
2 X 3	∅	2.63 (66.8)	∅	3.00 (76.2)	∅	.095 (2.4)	±.010 (.3)	1.212 (30.8)
2 X 4	∅	3.63 (92.0)	∅	4.00 (101.6)	∅	.105 (2.7)	±.017 (.4)	1.700 (43.2)
2 X 5	∅	4.63 (117.6)	±.040 (1.0)	5.00 (127.0)	∅	.111 (2.8)	∅	2.233 (56.7)
> 2.5 X 3	2.75 (69.8)	N/A	N/A	3.00 (76.2)	N/A	.095 (2.4)	±.015 (.4)	N/A
3 X 1	3.25 (82.6)	.75 (19.1)	±.020 (.5)	1.00 (25.4)	1.00 (25.4)	.065 (1.7)	±.010 (.3)	N/A
3 X 2	∅	1.63 (41.4)	±.030 (.8)	2.00 (50.8)	∅	.080 (2.0)	∅	.712 (18.1)
3 X 3	∅	2.63 (66.8)	∅	3.00 (76.2)	∅	.100 (2.5)	±.015 (.4)	1.212 (30.8)
3 X 4	∅	3.63 (92.2)	∅	4.00 (101.6)	∅	.105 (2.7)	∅	1.700 (43.2)
3 X 5	∅	4.63 (117.6)	±.040 (1.0)	5.00 (127.0)	∅	.115 (2.9)	±.012 (.3)	2.233 (56.7)
> 4 X 1.5	4.25 (108.0)	N/A	N/A	1.50 (38.1)	N/A	.070 (1.8)	±.008 (.2)	N/A
4 X 2	∅	1.63 (41.4)	±.030 (.8)	2.00 (50.8)	1.50 (38.1)	.080 (2.0)	∅	.712 (18.1)
4 X 3	∅	2.63 (66.8)	∅	3.00 (76.2)	∅	.095 (2.4)	±.010 (.3)	1.212 (30.8)
4 X 4	∅	3.63 (92.2)	∅	4.00 (101.6)	∅	.105 (2.7)	±.012 (.3)	1.700 (43.2)
4 X 5	∅	4.63 (117.6)	±.040 (1.0)	5.00 (127.0)	∅	.110 (2.8)	±.018 (.5)	2.233 (56.7)
> 6 X 4	6.25 (158.8)	N/A	N/A	4.00 (101.6)	N/A	.110 (2.8)	±.010 (.3)	N/A

N/A = NOT AVAILABLE

> = AVAILABLE AS "FS" ONLY.



WAS DPC\_PVC\_F\_US\_01

DIMENSIONS IN PARENTHESIS ARE IN METRIC.

CAD FILENAME/LAYERS

D34301BA\_PVC\_F\_US\_02

REV	DATE	BY	CHK	DESCRIPTION	ECN	CHK	CUST	SUP
4	8-3-01	JCST	JKG	SEE SHEET 1 FOR REVISION NUMBERS	34301-03	JKG	JKG	
3	01-24-97	JBA	CEF	SEE SHEET 1 FOR REVISION NUMBERS	34301-03	CEF	CEF	
2	10-18-95	DW	CEF	SEE SHEET 1 FOR REVISION NUMBERS	34301-03	CEF		
1	10-27-93	DW	CEF	SEE SHEET 1 FOR REVISION NUMBERS	34301-03	CEF		
R	3/17/93	DW	BKR	SEE SHEET 1 FOR REVISION NUMBERS	34301-03	CEF		

<h1>PANDUIT</h1>		CORP. TINLEY PARK, ILLINOIS	
<h2>WIRING DUCT, TYPE "F" &amp; "FS" CUSTOMER DRAWING</h2>			
UNLESS OTHERWISE SPECIFIED, DIMENSIONAL TOLERANCES ARE: (.X) ± (.XXX) ± (.XX) ± (.1213.1) ANGLES ±		UNLESS OTHERWISE SPECIFIED, ALL DIMENSIONS ARE GIVEN IN INCHES, THIRD ANGLE PROJECTION.	
DRAWN BY DW	MAT'L: POLYVINYL CHLORIDE	SCALE NONE	
GATE 3/1/93	CHECKED BY BKR	DRAWING NO. 34301-03 Sht 2 of 2	DWG A SIZE