



Chipsmall Limited consists of a professional team with an average of over 10 year of expertise in the distribution of electronic components. Based in Hongkong, we have already established firm and mutual-benefit business relationships with customers from,Europe,America and south Asia,supplying obsolete and hard-to-find components to meet their specific needs.

With the principle of “Quality Parts,Customers Priority,Honest Operation,and Considerate Service”,our business mainly focus on the distribution of electronic components. Line cards we deal with include Microchip,ALPS,ROHM,Xilinx,Pulse,ON,Everlight and Freescale. Main products comprise IC,Modules,Potentiometer,IC Socket,Relay,Connector.Our parts cover such applications as commercial,industrial, and automotives areas.

We are looking forward to setting up business relationship with you and hope to provide you with the best service and solution. Let us make a better world for our industry!



Contact us

Tel: +86-755-8981 8866 Fax: +86-755-8427 6832

Email & Skype: info@chipsmall.com Web: www.chipsmall.com

Address: A1208, Overseas Decoration Building, #122 Zhenhua RD., Futian, Shenzhen, China



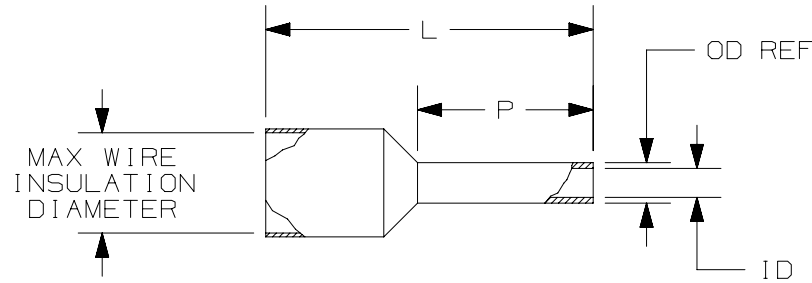
THIS COPY IS PROVIDED ON A RESTRICTED BASIS AND IS NOT TO BE USED IN ANY WAY DETRIMENTAL TO THE INTERESTS OF PANDUIT CORP.

PANDUIT PART #	WIRE RANGE		COLOR (DIN)	WIRE STRIP LENGTH +1/32 -0 [+0,8 -0]	WIRE CLASS	DIMENSIONS in. [mm]				MAX WIRE INSUL DIA	INSTALLATION TOOLS
	AWG	[mm ²]				L	P	ID	OD (REF.)		
* FSDX75-8	22-20	[0,50]	WHITE	15/32 [11,91]	B, K, M	0.53 [13,5]	0.31 [8,0]	0.04 [1,1]	0.05 [1,4]	0.12 [3,0]	CT-1002 CT-1003 CT-1123
FSDX76-8	18	[0,75]	GRAY	15/32 [11,91]	B, K, M	0.55 [14,0]	0.31 [8,0]	0.05 [1,3]	0.06 [1,6]	0.14 [3,4]	
FSDX77-8	-	[1,0]	RED	15/32 [11,91]	B, K, M	0.57 [14,5]	0.31 [8,0]	0.06 [1,5]	0.07 [1,8]	0.14 [3,4]	
FSDX78-8	16	[1,5]	BLACK	15/32 [11,91]	B, K, M	0.57 [14,5]	0.31 [8,0]	0.07 [1,8]	0.08 [2,1]	0.15 [3,8]	
FSDX84-12	6	[16,0]	BLUE	5/8 [15,9]	G, H, I, K, M	.91 [23,0]	0.47 [12,0]	0.24 [6,0]	0.25 [6,4]	0.37 [9,5]	+CT-1004 CT-1104

* UL LISTED WITH 20 AWG ONLY, UL486F SCOPE IS 20 - 1/0 AWG. WHITE IS DIN COLOR FOR 20 AWG [0,5]
+ TOOL/PART IS NOT A UL LISTED COMBINATION

NOTES:

- USED FOR:
 - UL LISTED WITH STRANDED COPPER WIRE ONLY
 - 221°F [105°C] MAX. OPERATING TEMPERATURE
- MATERIAL:
 - STAMPING: COPPER, TIN PLATED
 - HOUSING: POLYPROPYLENE, COLOR CODED
 - COLOR CODE CONFORMS TO DIN STANDARD
- SEE www.panduit.com FOR PACKAGE QUANTITIES
- DIMENSIONS IN BRACKETS ARE METRIC EQUIVALENT



REV	DATE	BY	CHK	APR	DESCRIPTION	ECN
05	6/15	JHNU	JHNU	RGB	REVISED STRIP LENGTH FOR PSDX84-12: 5/8 WAS 7/8	A41752
04	6/15	TMR	RGB	VMB	UL LISTED, ADDED WIRE CLASS, MAX WIRE INSUL DIA TO DRWG	A41752
03	02.18.13	BDK	BCT	VMB	NOTE 2:B "POLYPROPELENE" WAS "PLASTIC" UPDATED DRAWING TO CURRENT STANDARDS EXPANDED WIRE RANGE ON FSDX75-8 FSD76-8 WAS 20 GAGE FSDX77-8 REMOVED 18 GAGE ADDED CSA LOGO	A41752

TITLE FERRULES WITH SLEEVES SINGLE WIRE DIN END SLEEVES FSDX: LARGER SLEEVE DIAMETER CUSTOMER DRAWING	
ITEM REVISION NAME N41752BA/05	
DATASET FILE NAME N41752BA/05	
UNLESS OTHERWISE SPECIFIED, DIMENSIONAL TOLERANCES ARE: IN [mm] .X ± .XXX ± .XX ± ANGLES ±	
THIRD ANGLE PROJECTION	
DRAWN BY JKD	DATE -
CHK SKB	SCALE N.T.S.
MATERIAL: SEE NOTES	
DRAWING NUMBER: A41752	
SHEET 1 OF 1	
SIZE A	