



Chipsmall Limited consists of a professional team with an average of over 10 year of expertise in the distribution of electronic components. Based in Hongkong, we have already established firm and mutual-benefit business relationships with customers from,Europe,America and south Asia,supplying obsolete and hard-to-find components to meet their specific needs.

With the principle of “Quality Parts,Customers Priority,Honest Operation,and Considerate Service”,our business mainly focus on the distribution of electronic components. Line cards we deal with include Microchip,ALPS,ROHM,Xilinx,Pulse,ON,Everlight and Freescale. Main products comprise IC,Modules,Potentiometer,IC Socket,Relay,Connector.Our parts cover such applications as commercial,industrial, and automotives areas.

We are looking forward to setting up business relationship with you and hope to provide you with the best service and solution. Let us make a better world for our industry!



Contact us

Tel: +86-755-8981 8866 Fax: +86-755-8427 6832

Email & Skype: info@chipsmall.com Web: www.chipsmall.com

Address: A1208, Overseas Decoration Building, #122 Zhenhua RD., Futian, Shenzhen, China



FSMJ Series *Micro Miniature Vertical Pushbuttons with Tactile Feel & ESD Grounding Terminal*

MATERIAL SPECIFICATIONS:

ContactsCopper alloy, silver plate
 Case.....Polyamide
 Actuator ButtonPolyacetal Resin
 FrameCopper alloy, tin plate
 TerminalsCopper alloy, silver plate

TYPICAL PERFORMANCE CHARACTERISTICS:

Contact Rating50 mA @ 12 VDC
 Initial Contact Resistance.....100 Milliohms max.
 Insulation Resistance100 Megohms min. @ 100 VDC
 Dielectric Strength250 VAC
 Actuation Force160 Grams AVG (STD.)
 Actuator Travel......012" (0,3)
 Electrostatic Discharge
 w/ESD Ground Terminal5Kv w/no discharge
 Life Expectancy100,000 Cycles

ENVIRONMENTAL SPECIFICATIONS

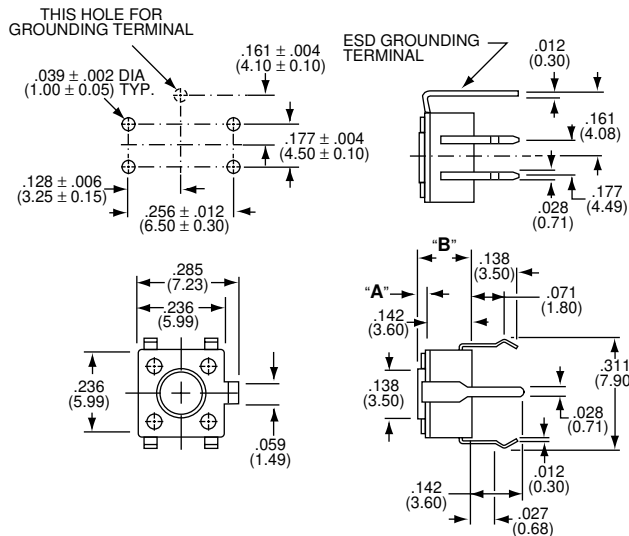
Operating Temperature.....-4°F to +158°F (-20°C to + 70°C)
 Storage Temperature.....-22°F to +176°F (-30°C to +80°C)
 Solder Heat Resistance.....See Page M6

6 x 6 mm

D



FSM1J
WITH
ESD
TERMINAL

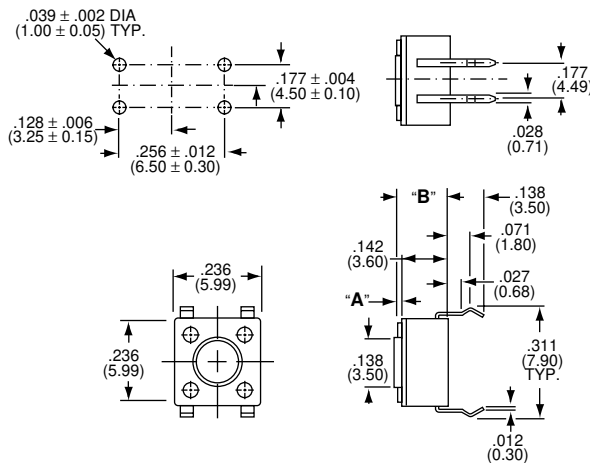


Part Number W/O ESD Terminal	Dim. A	Dim B	Button Color
FSM 1J	.028" (0,70)	.169" (4,30)	Black
FSM 3J	.055" (1,40)	.196" (5,00)	Black
FSM 5J	.134" (3,40)	.276" (7,00)	Blue
FSM 7J	.232" (5,90)	.374" (9,50)	Black
FSM 9J	.146" (3,70)	.287" (7,30)	Ivory
FSM 11J	.173" (4,40)	.315" (8,00)	White
FSM 13J	.370" (9,40)	.512" (13,00)	Black
FSM 15J	.527" (13,40)	.669" (17,00)	Black
FSM 17J	.193" (4,90)	.335" (8,51)	Black

6 x 6 mm



FSM2J
WITHOUT
ESD
TERMINAL



Part Number W/O ESD Terminal	Dim. A	Dim B	Button Color
FSM 2J	.028" (0,70)	.169" (4,30)	Black
FSM 4J	.055" (1,40)	.196" (5,00)	Black
FSM 6J	.134" (3,40)	.276" (7,00)	Blue
FSM 8J	.232" (5,90)	.374" (9,50)	Black
FSM 10J	.146" (3,70)	.287" (7,30)	Ivory
FSM 12J	.173" (4,40)	.315" (8,00)	White
FSM 14J	.370" (9,40)	.512" (13,00)	Black
FSM 16J	.527" (13,40)	.669" (17,00)	Black
FSM 18J	.193" (4,90)	.335" (8,51)	Black

PART NUMBERING SEQUENCE

