



Chipsmall Limited consists of a professional team with an average of over 10 year of expertise in the distribution of electronic components. Based in Hongkong, we have already established firm and mutual-benefit business relationships with customers from,Europe,America and south Asia,supplying obsolete and hard-to-find components to meet their specific needs.

With the principle of "Quality Parts,Customers Priority,Honest Operation,and Considerate Service",our business mainly focus on the distribution of electronic components. Line cards we deal with include Microchip,ALPS,ROHM,Xilinx,Pulse,ON,Everlight and Freescale. Main products comprise IC,Modules,Potentiometer,IC Socket,Relay,Connector.Our parts cover such applications as commercial,industrial, and automotives areas.

We are looking forward to setting up business relationship with you and hope to provide you with the best service and solution. Let us make a better world for our industry!



Contact us

Tel: +86-755-8981 8866 Fax: +86-755-8427 6832

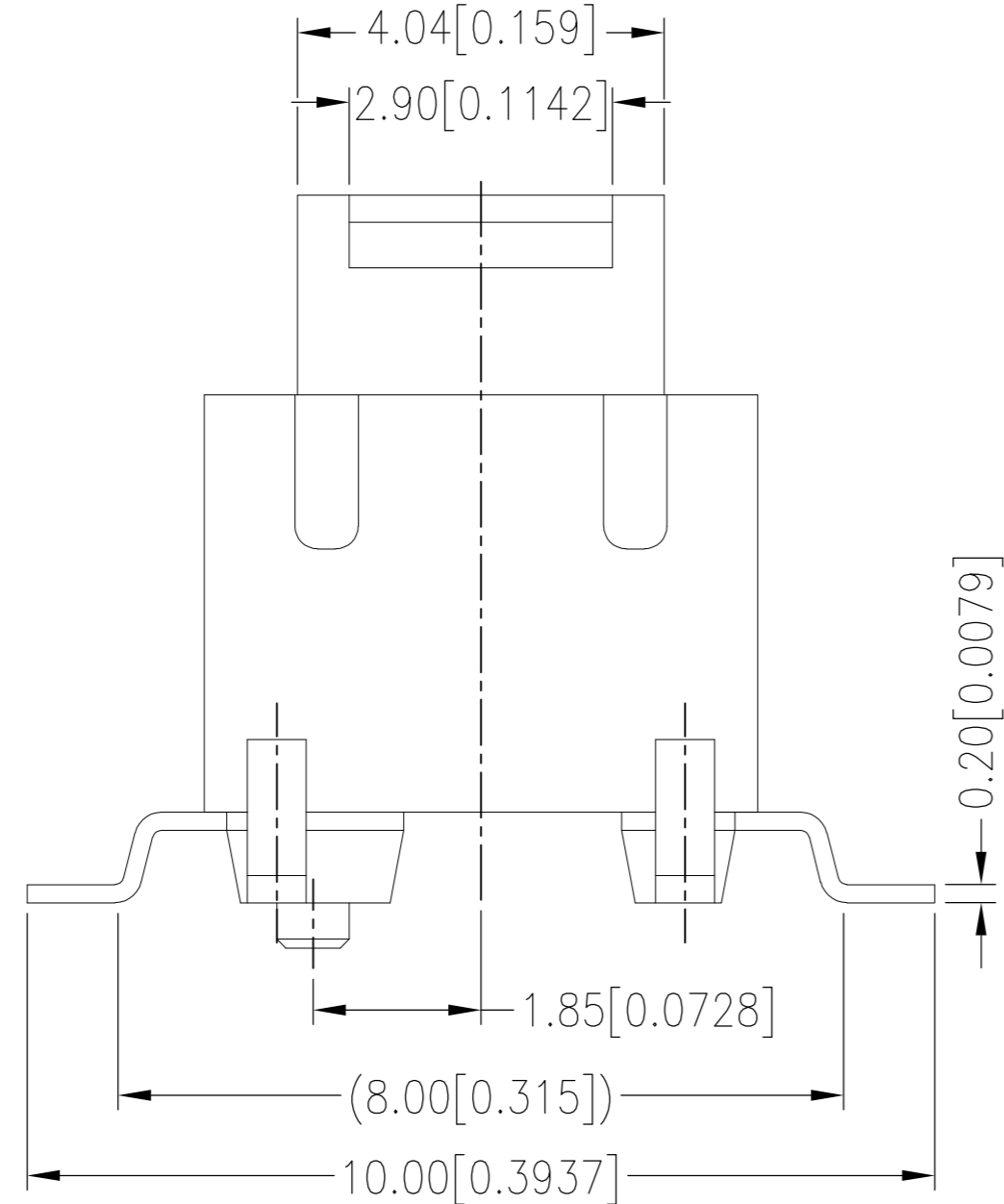
Email & Skype: info@chipsmall.com Web: www.chipsmall.com

Address: A1208, Overseas Decoration Building, #122 Zhenhua RD., Futian, Shenzhen, China



THIS DRAWING IS UNPUBLISHED. RELEASED FOR PUBLICATION
 © COPYRIGHT - A ALL RIGHTS RESERVED.

REVISIONS					
P	LTR	DESCRIPTION	DATE	DWN	APVD
A		REVISED PER ECR-16-010442	22JUL2016	RS	PO
A1		REVISED PER ECR-16-015883	16NOV2016	RK	SS
A2		REVISED PER ECR-16-017884	21DEC2016	RK	SS



SPECIFICATIONS:

MATERIALS

CASE: HIGH TEMP THERMOPLASTIC (UL94-V0), BLACK
 ACTUATOR: HIGH TEMP THERMOPLASTIC PA9T (UL94-V0)
 MOXING CONTACT: STAINLESS STEEL, AG PLATED
 FIXED CONTACT/TERMINAL: BRASS, AG PLATED

ELECTRICAL

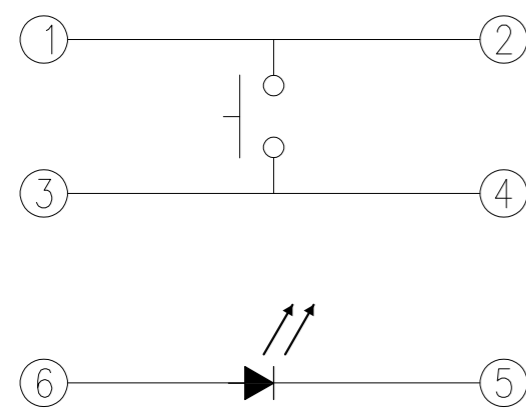
CONTACT RATING: 50 mA @ 12 VDC
 INITIAL CONTACT RESISTANCE: 100 MILLIOHMS MAX
 INSULATION RESISTANCE: 100 MEGAOHM MIN @ 500 VDC
 DIELECTRIC STRENGTH: 250 VAC FOR 1 MINUTE

MECHANICAL

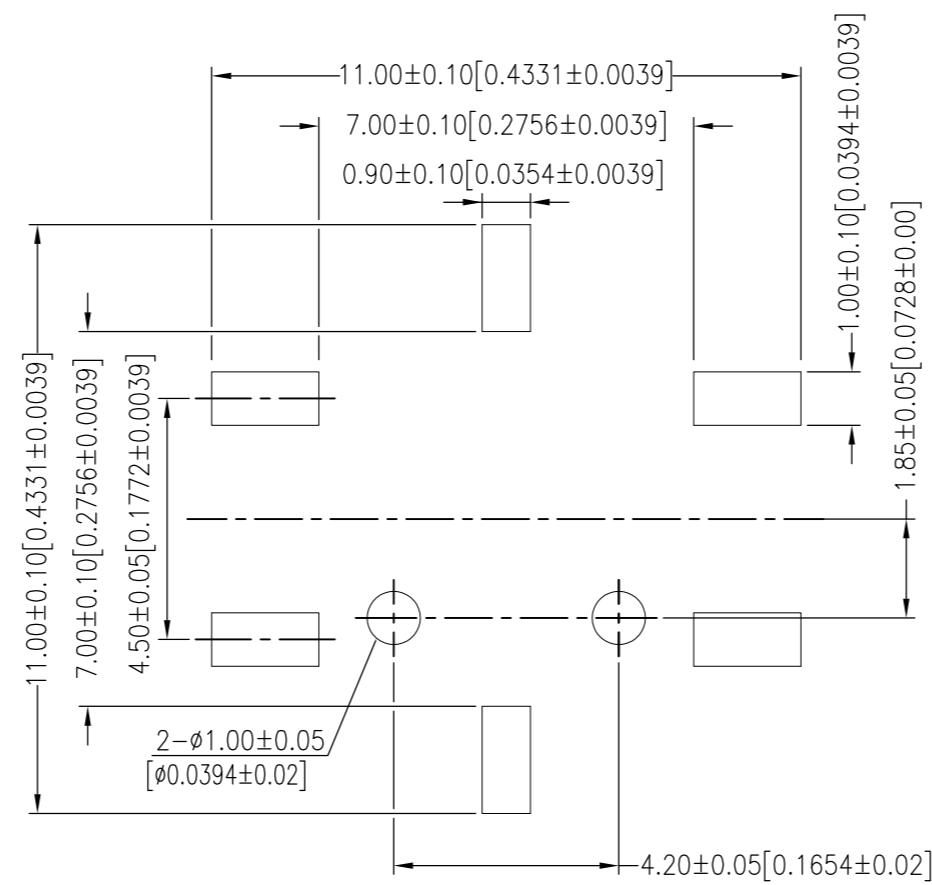
ACTUATION FORCE: SEE TABLE
 ACTUATION TRAVEL: 0.20 MM +/- 0.10 MM
 ACTUATION CYCLES: FOR ACTUATION FORCE OF 100GF OR 160GF,
 500,000 ACTUATION CYCLES MIN; FOR ACTUATION FORCE OF 260GF,
 200,000 ACTUATION CYCLES MIN

ENVIRONMENTAL

OPERATING TEMPERATURE: -25°C TO +70°C
 STORAGE TEMPERATURE: -30°C TO +80°C
 STORAGE HUMIDITY: 85% MAX
 VIBRATION: PER MIL-STD-202F, METHOD 201A
 THERMAL SHOCK: PER MIL-STD-202F, METHOD 213B, CONDITION A
 RESISTANCE TO SOLDER HEAT: REFLOW SOLDERING TEMPERATURE
 260°C +/- 5°C PER TEC-109-201, CONDITION B



CIRCUIT DIAGRAM



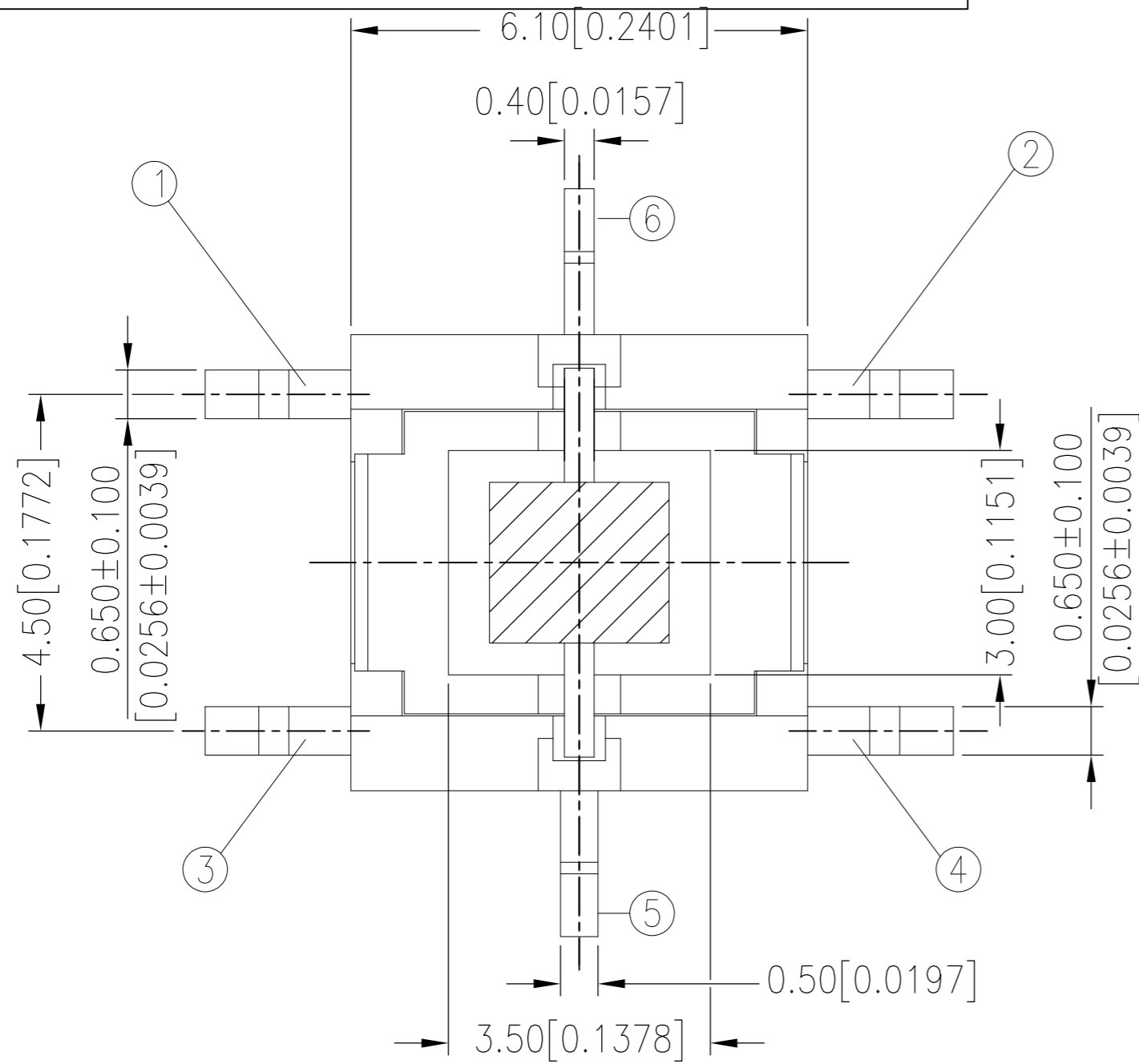
P.C.B LAYOUT

1. ALL MATERIALS AND FINISHES SHALL COMPLY WITH EU DIRECTIVE 2002/95/EC OF 27JAN2003 (ROHS).
2. LOW INTENSITY LED PARTS SHOWN ON PAGE 2
3. HIGH INTENSITY LED PARTS SHOWN ON PAGE 3
4. PARTS TO BE PACKAGED IN TAPE AND REEL PER EIA-481.
5. IF THIS SWITCH IS USED WITH A CAP, THE CAP SHALL BE INSTALLED AFTER SOLDERING THE SWITCH TO PCB.

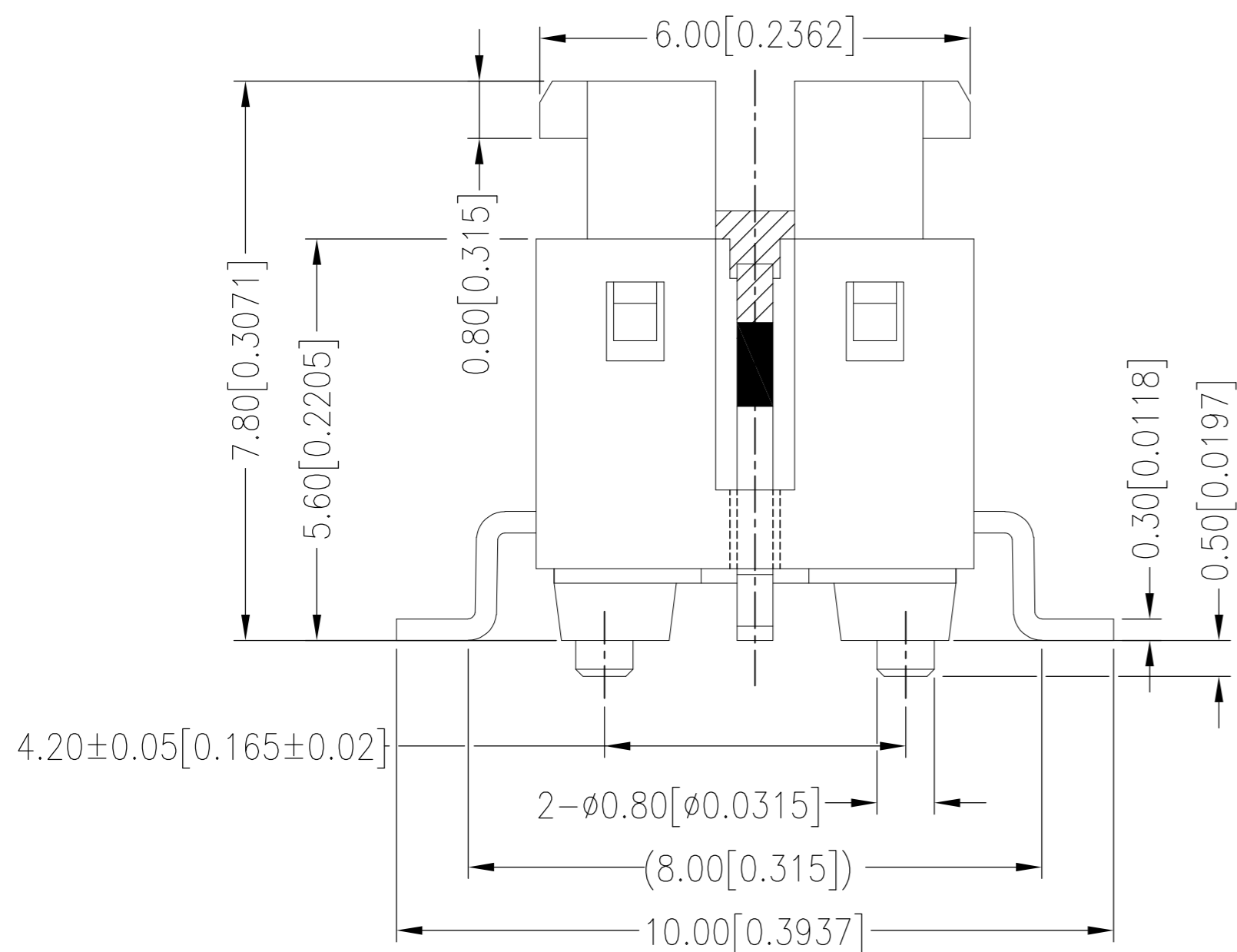
THIS DRAWING IS A CONTROLLED DOCUMENT.		DWN RAVI.S 16MAR2016	TE Connectivity		
DIMENSIONS: mm		CHK R. Hill 16MAR2016			
TOLERANCES UNLESS OTHERWISE SPECIFIED:		APVD R. Hill 16MAR2016	NAME ILLUMINATED TACTILE SWITCH SURFACE MOUNTED		
0 PLC ± - 1 PLC ± - 2 PLC ± +/- 0.30 3 PLC ± - 4 PLC ± - ANGLES ± - FINISH		PRODUCT SPEC APPLICATION SPEC	SIZE A2	CAGE CODE 00779	DRAWING NO C=2213819
MATERIAL		WEIGHT	RESTRICTED TO		
		CUSTOMER DRAWING	SCALE 1:1	SHEET 1 of 3	REV A2

THIS DRAWING IS UNPUBLISHED. RELEASED FOR PUBLICATION. ALL RIGHTS RESERVED.

REVISIONS					
P	LTR	DESCRIPTION	DATE	DWN	APVD
-	-	SEE SHEET 1	-	-	-



LOW INTENSITY LED PROFILE



OPERATING FORCE	LED COLOR	TE DESCRIPTIVE PART NUMBER	TE PART NUMBER
520	COLD WHITE	FSMIJM65AW04	5-2213819-6
520	RED	FSMIJM65AR04	5-2213819-5
520	RED ORANGE	FSMIJM65A□04	5-2213819-4
520	SOFT ORANGE	FSMIJM65AA04	5-2213819-3
520	YELLOW	FSMIJM65AY04	5-2213819-2
520	YELLOW GREEN	FSMIJM65AG04	5-2213819-1
520	PURE GREEN	FSMIJM65APG04	5-2213819-0
520	BLUE	FSMIJM65AB04	4-2213819-9
260	COLD WHITE	FSMIJM63AW04	4-2213819-0
260	RED	FSMIJM63AR04	3-2213819-9
260	RED ORANGE	FSMIJM63A□04	3-2213819-8
260	SOFT ORANGE	FSMIJM63AA04	3-2213819-7
260	YELLOW	FSMIJM63AY04	3-2213819-6
260	YELLOW GREEN	FSMIJM63AG04	3-2213819-5
260	PURE GREEN	FSMIJM63APG04	3-2213819-4
260	BLUE	FSMIJM63AB04	3-2213819-3
160	COLD WHITE	FSMIJM62AW04	2-2213819-4
160	RED	FSMIJM62AR04	2-2213819-3
160	RED ORANGE	FSMIJM62A□04	2-2213819-2
160	SOFT ORANGE	FSMIJM62AA04	2-2213819-1
160	YELLOW	FSMIJM62AY04	2-2213819-0
160	YELLOW GREEN	FSMIJM62AG04	1-2213819-9
160	PURE GREEN	FSMIJM62APG04	1-2213819-8
160	BLUE	FSMIJM62AB04	1-2213819-7
100	COLD WHITE	FSMIJM61AW04	2213819-8
100	RED	FSMIJM61AR04	2213819-7
100	RED ORANGE	FSMIJM61A□04	2213819-6
100	SOFT ORANGE	FSMIJM61AA04	2213819-5
100	YELLOW	FSMIJM61AY04	2213819-4
100	YELLOW GREEN	FSMIJM61AG04	2213819-3
100	PURE GREEN	FSMIJM61APG04	2213819-2
100	BLUE	FSMIJM61AB04	2213819-1

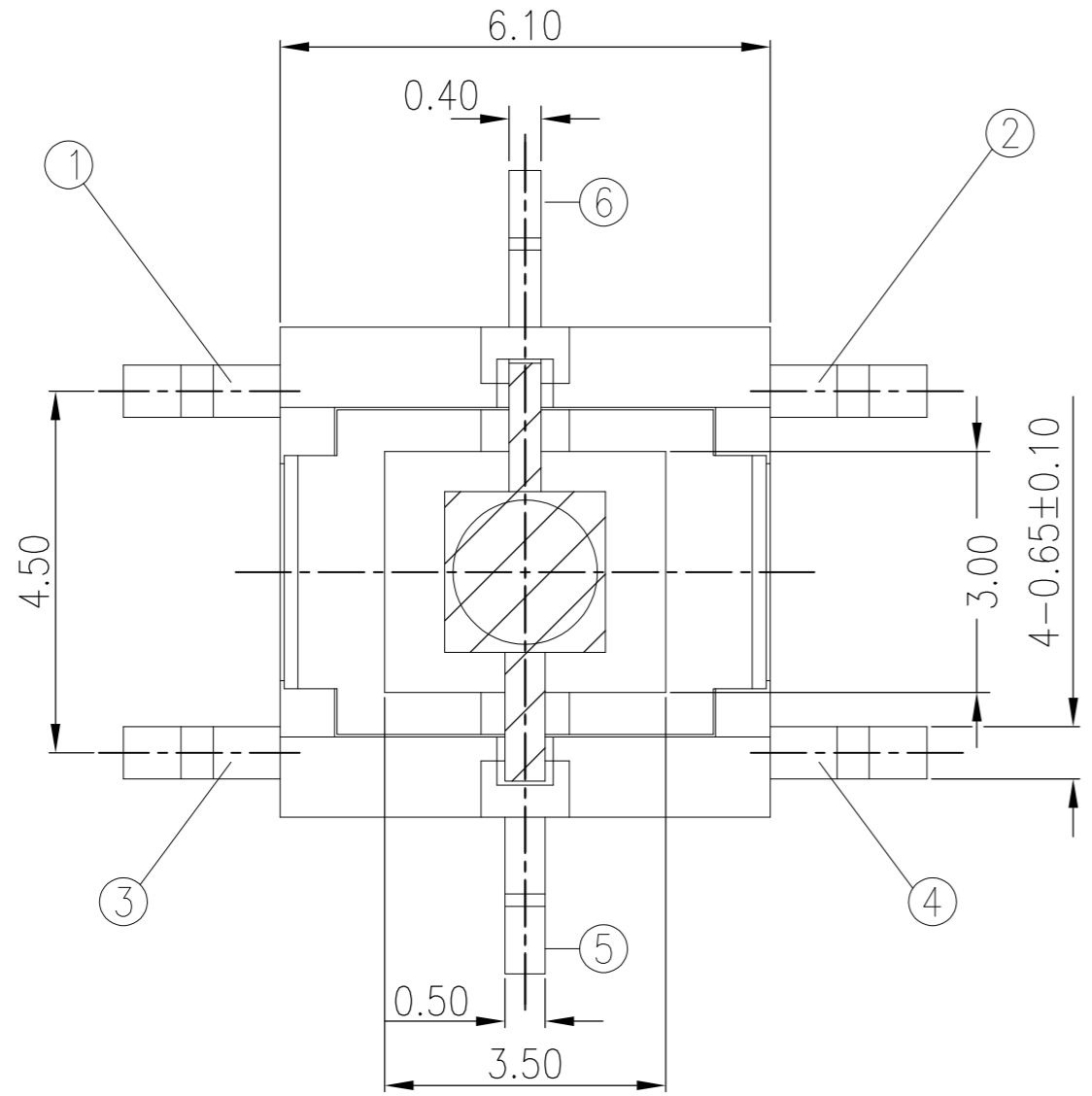
THIS DRAWING IS A CONTROLLED DOCUMENT.

DWN	RAVI.S	16MAR2016	 TE Connectivity
CHK	R. Hill	16MAR2016	
APVD	R. Hill	16MAR2016	
PRODUCT SPEC			
APPLICATION SPEC			NAME
			ILLUMINATED TACTILE SWITCH SURFACE MOUNTED
			SIZE
			CAGE CODE
			DRAWING NO
			RESTRICTED TO
			A2 00779 C=2213819
			SCALE
			1:1
			SHEET
			2 OF 3
			REV
			A2

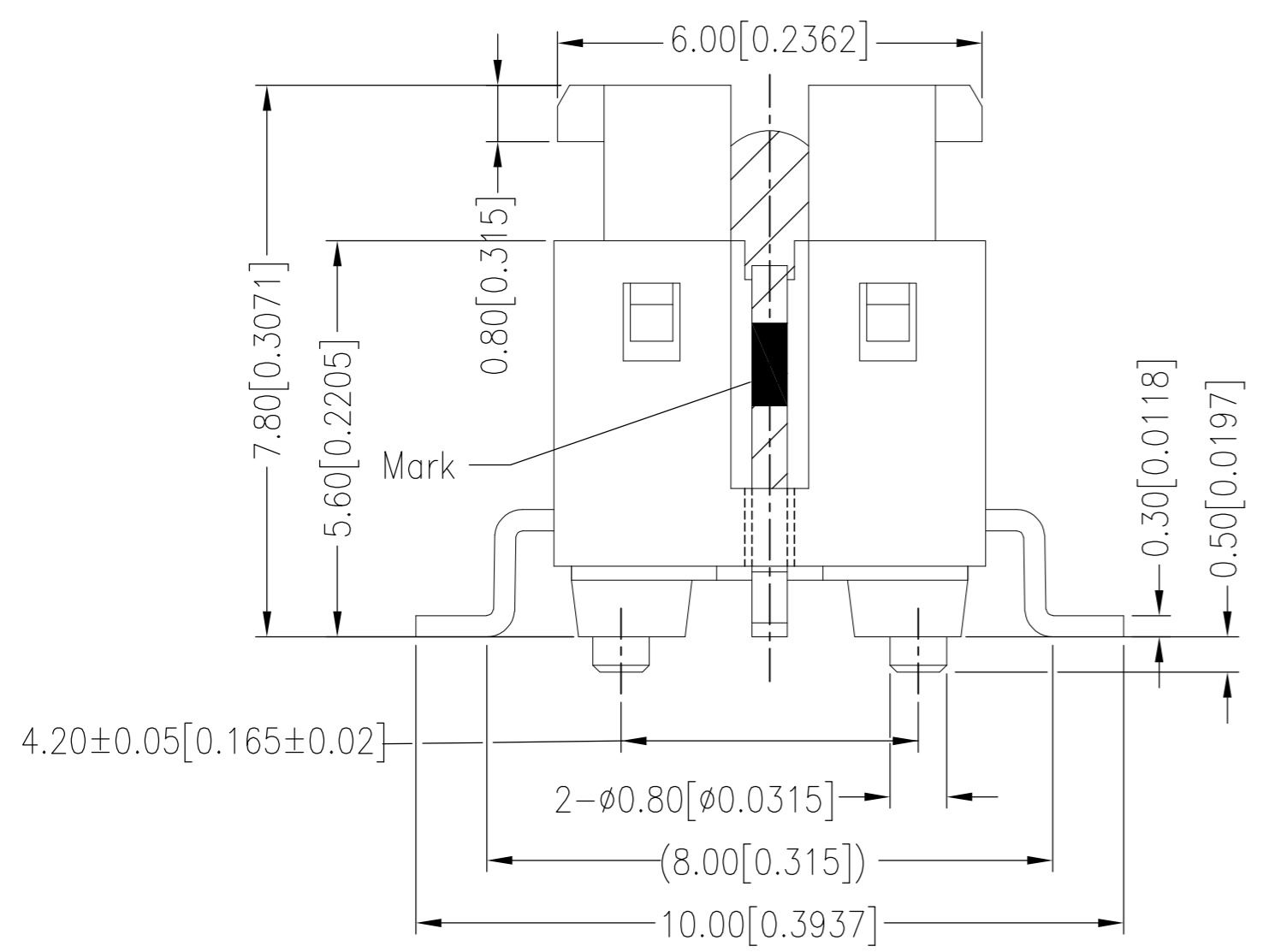
CUSTOMER DRAWING

THIS DRAWING IS UNPUBLISHED. RELEASED FOR PUBLICATION
 © COPYRIGHT - A ALL RIGHTS RESERVED.

REVISIONS					
P	LTR	DESCRIPTION	DATE	DWN	APVD
-	-	SEE SHEET 1	-	-	-



HIGH INTENSITY LED PROFILE



520	COLD WHITE	FSMIJM65BW04	6-2213819-4
520	RED	FSMIJM65BR04	6-2213819-3
520	RED ORANGE	FSMIJM65B004	6-2213819-2
520	SOFT ORANGE	FSMIJM65BA04	6-2213819-1
520	YELLOW	FSMIJM65BY04	6-2213819-0
520	YELLOW GREEN	FSMIJM65BG04	5-2213819-9
520	PURE GREEN	FSMIJM65BPG04	5-2213819-8
520	BLUE	FSMIJM65BB04	5-2213819-7
260	COLD WHITE	FSMIJM63BW04	4-2213819-8
260	RED	FSMIJM63BR04	4-2213819-7
260	RED ORANGE	FSMIJM63B004	4-2213819-6
260	SOFT ORANGE	FSMIJM63BA04	4-2213819-5
260	YELLOW	FSMIJM63BY04	4-2213819-4
260	YELLOW GREEN	FSMIJM63BG04	4-2213819-3
260	PURE GREEN	FSMIJM63BPG04	4-2213819-2
260	BLUE	FSMIJM63BB04	4-2213819-1
160	COLD WHITE	FSMIJM62BW04	3-2213819-2
160	RED	FSMIJM62BR04	3-2213819-1
160	RED ORANGE	FSMIJM62B004	3-2213819-0
160	SOFT ORANGE	FSMIJM62BA04	2-2213819-9
160	YELLOW	FSMIJM62BY04	2-2213819-8
160	YELLOW GREEN	FSMIJM62BG04	2-2213819-7
160	PURE GREEN	FSMIJM62BPG04	2-2213819-6
160	BLUE	FSMIJM62BB04	2-2213819-5
100	COLD WHITE	FSMIJM61BW04	1-2213819-6
100	RED	FSMIJM61BR04	1-2213819-5
100	RED ORANGE	FSMIJM61B004	1-2213819-4
100	SOFT ORANGE	FSMIJM61BA04	1-2213819-3
100	YELLOW	FSMIJM61BY04	1-2213819-2
100	YELLOW GREEN	FSMIJM61BG04	1-2213819-1
100	PURE GREEN	FSMIJM61BPG04	1-2213819-0
100	BLUE	FSMIJM61BB04	2213819-9
OPERATING FORCE	LED COLOR	TE DESCRIPTIVE PART NUMBER	TE PART NUMBER

THIS DRAWING IS A CONTROLLED DOCUMENT.		DWN RAVI.S 16MAR2016	TE Connectivity	
DIMENSIONS: mm		CHK R. Hill 16MAR2016		
TOLERANCES UNLESS OTHERWISE SPECIFIED:		APVD R. Hill 16MAR2016	NAME ILLUMINATED TACTILE SWITCH SURFACE MOUNTED	
0 PLC ± - 1 PLC ± - 2 PLC ± +/- 0.30 3 PLC ± - 4 PLC ± - ANGLES ± - FINISH -		PRODUCT SPEC APPLICATION SPEC	SIZE A2	CAGE CODE 00779
MATERIAL		WEIGHT -	DRAWING NO C=2213819	RESTRICTED TO -
CUSTOMER DRAWING		SCALE 1:1	SHEET 3 OF 3	REV A2