



Chipsmall Limited consists of a professional team with an average of over 10 year of expertise in the distribution of electronic components. Based in Hongkong, we have already established firm and mutual-benefit business relationships with customers from,Europe,America and south Asia,supplying obsolete and hard-to-find components to meet their specific needs.

With the principle of “Quality Parts,Customers Priority,Honest Operation,and Considerate Service”,our business mainly focus on the distribution of electronic components. Line cards we deal with include Microchip,ALPS,ROHM,Xilinx,Pulse,ON,Everlight and Freescale. Main products comprise IC,Modules,Potentiometer,IC Socket,Relay,Connector.Our parts cover such applications as commercial,industrial, and automotives areas.

We are looking forward to setting up business relationship with you and hope to provide you with the best service and solution. Let us make a better world for our industry!



## Contact us

Tel: +86-755-8981 8866 Fax: +86-755-8427 6832

Email & Skype: info@chipsmall.com Web: www.chipsmall.com

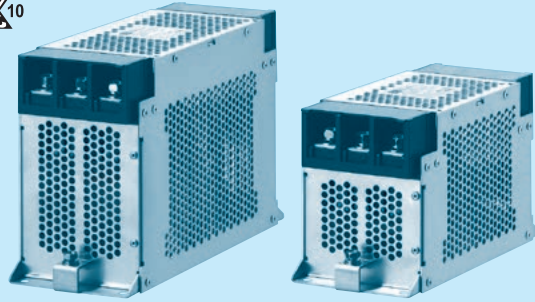
Address: A1208, Overseas Decoration Building, #122 Zhenhua RD., Futian, Shenzhen, China



# FTA series(80,100,125,150A)

FTA -80 -683 -□

① ② ③ ④



- ① Model Name
- ② Rated Current
- ③ Line to ground capacitor code: See table 1.1.

Code	Leakage Current (Input 250/500V 60Hz) (155,335 only 250/400V 60Hz)	Line to ground capacitor (nominal value)
223	1.0mA/2.0mA max	22,000pF
683	2.5mA/5.0mA max	68,000pF
104	3.5mA/7.0mA max	100,000pF
155	160mA/250mA max	1.5μF
335	320mA/500mA max	3.3μF

\* When the line to ground capacitor code is different, the attenuation characteristic is different.

- ④ Option
- H: Ultra high attenuation type  
"155", "335" is not applied.
- S: Hexagon socket head cap screw  
(Standard type is Hexagon head screw)
- U: Improve differential mode attenuation  
(Rated voltage 250V)
- G: With switch of line to ground capacitor  
Only "155", "335" is applied.
- \* "155" is Leakage current 160mA/250mA max when the switch state is ON (switched to "1").  
50μA/80μA max when the switch state is OFF (switched to "0").
- \* "335" is Leakage current 320mA/500mA max when the switch state is ON (switched to "1").  
50μA/80μA max when the switch state is OFF (switched to "0").

## Features of FTA series

### Book type (Space-saving type)

- 1-stage filter General-purpose High-attenuation (150kHz - 1MHz)
- Selectable leakage current value, Ultra high attenuation type "155", "335" for EU  
(Wye type with neutral earth system), With switch of line to ground capacitor "-G"

## Specifications

No.	Items	FTA-80-683	FTA-100-683	FTA-125-683	FTA-150-683
1	Rated Voltage[V]	AC Three phase 500 (voltage range:528 max) 50/60Hz *1 *2			
2	Rated Current[A]	80	100	125	150
3	Test Voltage (Terminal-Mounting Plate)	2,500 VAC (Cutoff Current = 100mA), 1minute at room temperature and humidity *3			
4	Isolation Resistance (Terminal-Mounting Plate)	500 VDC 100MΩ min at room temperature and humidity *4			
5	Leakage current 250/500V 60Hz	2.5mA/5.0mA max			
6	DC resistance	5mΩ max	4mΩ max	3mΩ max	3mΩ max
7	Safety agency approval temperatures	-25 to +85°C (Refer to Derating Curve)			
8	Operating temperature	-40 to +85°C (Refer to Derating Curve)			
9	Operating humidity	20 to 95%RH (Non condensing)			
10	Storage temperature/humidity	-40 to +85°C/20 to 95%RH (Non condensing)			
11	Vibration	10 to 55Hz, 19.6m/s <sup>2</sup> (2G), 3min. Period, 1hour each X, Y and Z axis			
12	Impact	196.1m/s <sup>2</sup> (20G), 11ms Once each X, Y and Z axis			
13	Safety agency approvals	UL1283, CSA C22.2 No.8 (C-UL), DIN EN60939 VDE0565 Teil3-1, ENEC			
14	Case size (without projection)	100 X 130 X 210 mm (W X H X D) (Option: -G refer to external view) [3.94 X 5.12 X 8.27 inches]			100 X 170 X 260 mm (W X H X D) (Option: -G refer to external view) [3.94 X 6.69 X 10.24 inches]
15	Weight	3.1kg max			4.2kg max

\*1 Only capacitor code and option "155", "335", Three Phase Δ-connection:400 (440 max), Wye-connection:500(528 max)

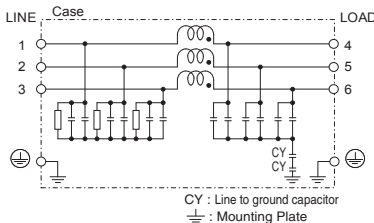
\*2 Only option "U", Three Phase 250(275 max)

\*3 Only capacitor code and option "155", "335", 2,800VDC (Cutoff Current = 10mA), 1minute at room temperature and humidity.

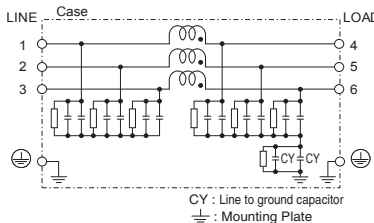
\*4 Only capacitor code and option "155", "335", Isolation resistance specification is deleted.

## Circuit Diagram

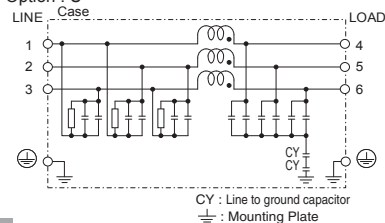
(1) Line to ground capacitor code : 223, 683, 104



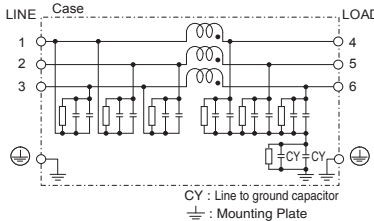
(2) Line to ground capacitor code : 155, 335



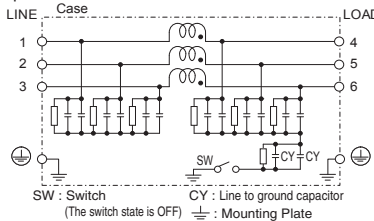
(3) Line to ground capacitor code : 223, 683, 104  
Option : U



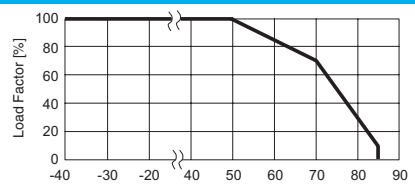
(4) Line to ground capacitor code : 155, 335  
Option : U



(5) Line to ground capacitor code : 155, 335  
Option : G



## Derating Curve

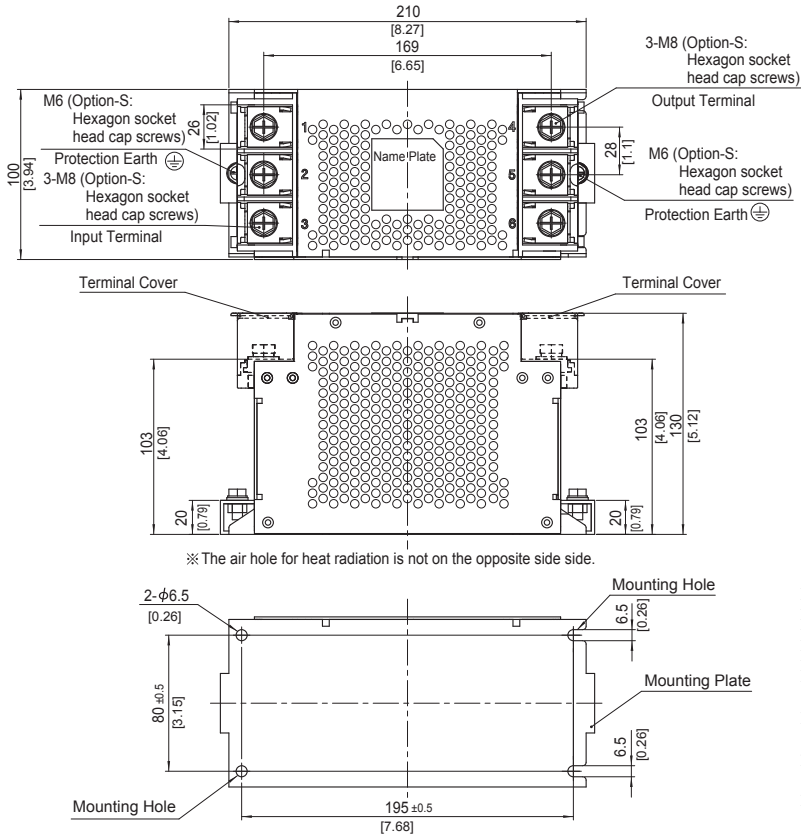


\* Keep free ventilation holes for cooling.



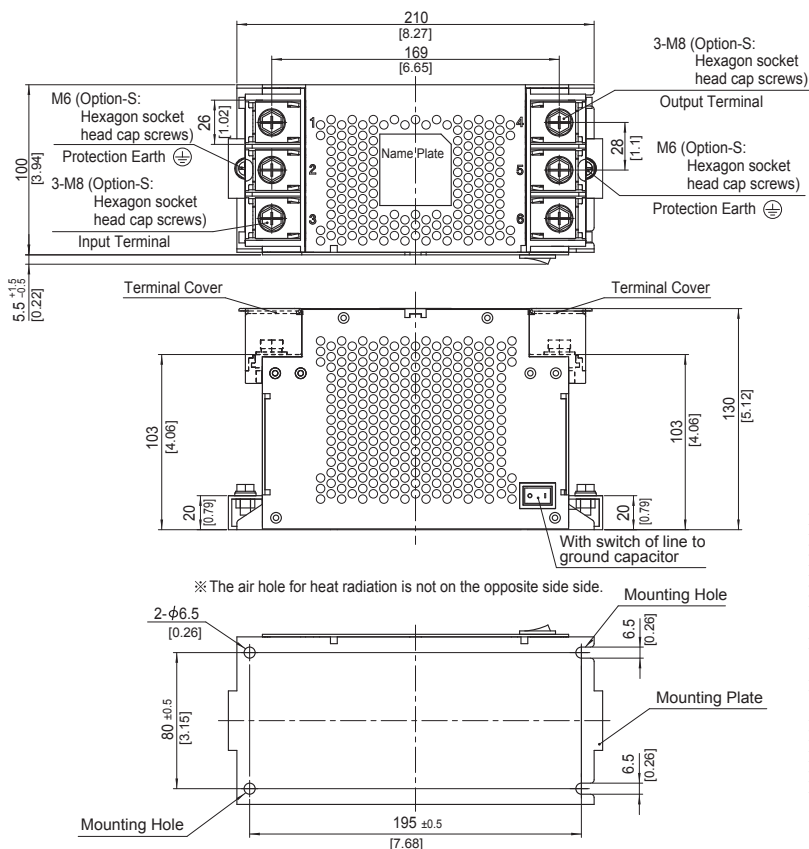
## External view

### FTA-80 / FTA-100 / FTA-125



- ※ Tolerance :  $\pm 1$  [ $\pm 0.04$ ]
- ※ Weight : 3.1kg max
- ※ Mounting Plate : Aluminum  $t=2.0$  [0.08]
- ※ Dimensions in mm, [ ]=inches
- ※ Terminal block screw tightening torque  
M8 :  $9.2N \cdot m$  (93.9kgf  $\cdot$  cm)max
- ※ Protection Earth (PE) screw tightening torque  
M6 :  $5.8N \cdot m$  (59.2kgf  $\cdot$  cm)max
- ※ Can not be mounted upside-down  
(mounted the top surface)
- ※ Keep free ventilation holes for cooling

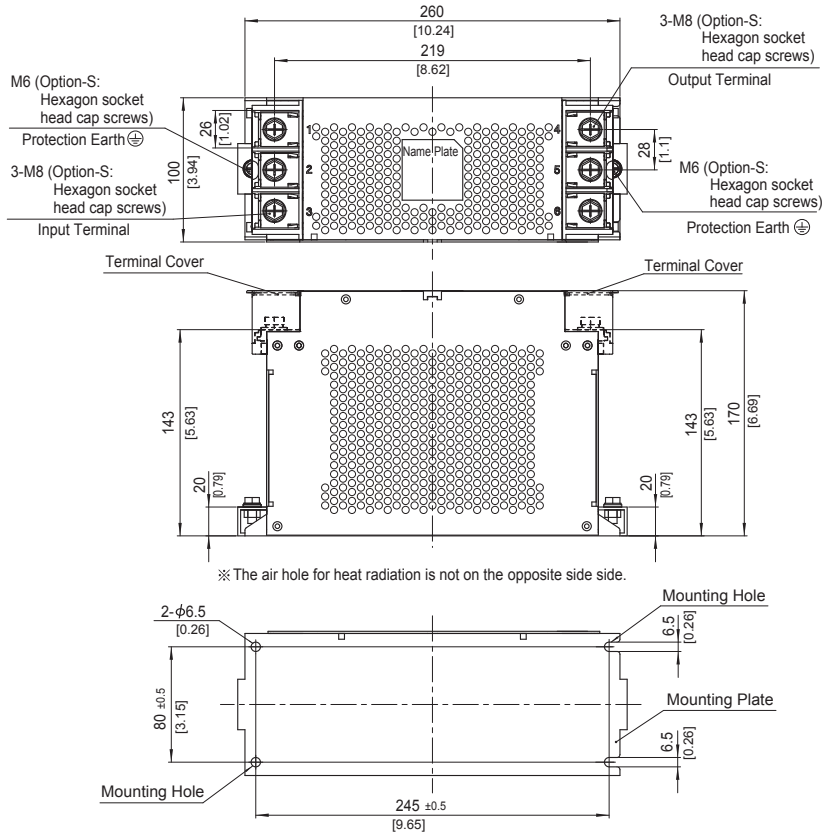
### FTA-80 / FTA-100 / FTA-125 with switch of line to ground capacitor ON/OFF



- ※ Tolerance :  $\pm 1$  [ $\pm 0.04$ ]
- ※ Weight : 3.1kg max
- ※ Mounting Plate : Aluminum  $t=2.0$  [0.08]
- ※ Dimensions in mm, [ ]=inches
- ※ Terminal block screw tightening torque  
M8 :  $9.2N \cdot m$  (93.9kgf  $\cdot$  cm)max
- ※ Protection Earth (PE) screw tightening torque  
M6 :  $5.8N \cdot m$  (59.2kgf  $\cdot$  cm)max
- ※ Can not be mounted upside-down  
(mounted the top surface)
- ※ Keep free ventilation holes for cooling
- ※ The switch state is OFF at shipping
- ※ Switch status ON : "I", OFF : "O"
- ※ HIGH LEAKAGE CURRENT  
first connect to earth

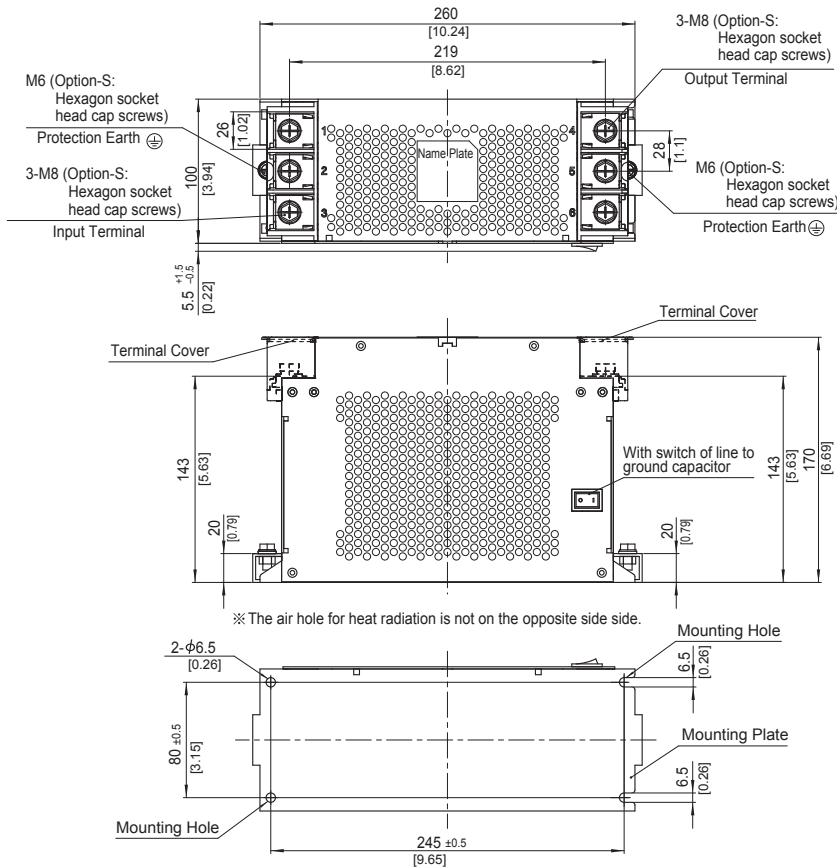
## External view

### FTA-150



- ※ Tolerance :  $\pm 1$  [ $\pm 0.04$ ]
- ※ Weight : 4.2kg max
- ※ Mounting Plate : Aluminum  $t=2.0$  [0.08]
- ※ Dimensions in mm, [ ]=inches
- ※ Terminal block screw tightening torque  
M8 :  $9.2N \cdot m$  (93.9kgf  $\cdot$  cm)max
- ※ Protection Earth (PE) screw tightening torque  
M6 :  $5.8N \cdot m$  (59.2kgf  $\cdot$  cm)max
- ※ Can not be mounted upside-down  
(mounted the top surface)
- ※ Keep free ventilation holes for cooling

### FTA-150 with switch of line to ground capacitor ON/OFF



- ※ Tolerance :  $\pm 1$  [ $\pm 0.04$ ]
- ※ Weight : 4.2kg max
- ※ Mounting Plate : Aluminum  $t=2.0$  [0.08]
- ※ Dimensions in mm, [ ]=inches
- ※ Terminal block screw tightening torque  
M8 :  $9.2N \cdot m$  (93.9kgf  $\cdot$  cm)max
- ※ Protection Earth (PE) screw tightening torque  
M6 :  $5.8N \cdot m$  (59.2kgf  $\cdot$  cm)max
- ※ Can not be mounted upside-down  
(mounted the top surface)
- ※ Keep free ventilation holes for cooling
- ※ The switch state is OFF at shipping
- ※ Switch status ON : " | ", OFF : " O "
- ※ HIGH LEAKAGE CURRENT  
first connect to earth